
A woman with blonde hair, wearing a black and white vertically striped, long-sleeved, form-fitting dress, stands in a modern hotel room. She has a weary expression and is touching her hair. The room features a bed with grey linens and a glass-enclosed shower area in the background.

AHH...
ANOTHER LONG
ASS DAY!

CHRISTMAS PARTY 2025
BY ABIMBOLEB

A woman with long brown hair and blue eyes, wearing a black and white vertically striped, long-sleeved, form-fitting dress with a deep V-neckline. She is standing in a dimly lit office or conference room, with her right hand on her hip. Two speech bubbles are positioned to her left. The background is dark and out of focus, showing office furniture and a person in the distance.


GOSH, I
ABSOLUTELY LOATHE
THESE HOLIDAY
CONFERENCES! THEY'RE
ENDLESSLY
EXHAUSTING.

I HONESTLY DON'T
EVEN KNOW WHY I KEEP
AGREEING TO THESE IN
THE FIRST PLACE.

I'M THE COMPANY'S
TOP REPRESENTATIVE,
AND THEY GIVE ME A ROOM
LIKE THIS! ON
CHRISTMAS EVE!

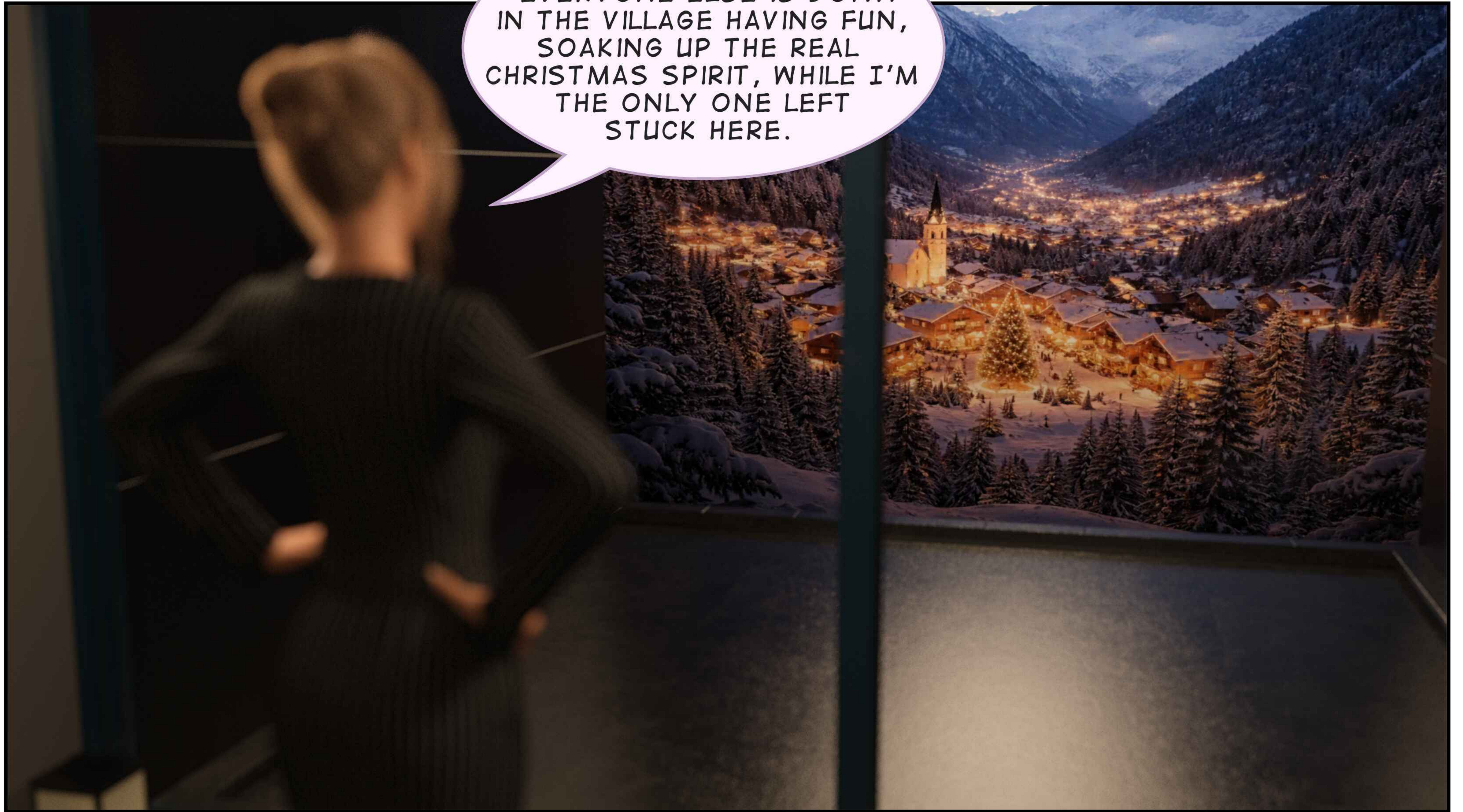
NOT EVEN A HINT OF
DECORATION OR A TINY
TREE, JUST A BLEAK, PLAIN
GRAY ROOM.





I SHOULD HAVE QUIT
YEARS AGO, BUT I
DIDN'T, AND THEY STILL DO
THIS TO ME EVERY
SINGLE YEAR.

OF COURSE,
EVERYONE ELSE IS DOWN
IN THE VILLAGE HAVING FUN,
SOAKING UP THE REAL
CHRISTMAS SPIRIT, WHILE I'M
THE ONLY ONE LEFT
STUCK HERE.






YEAH, THEY LEAVE ME ALONE HERE JUST BECAUSE I DON'T WANT TO JOIN THAT IDIOT THOMAS'S PARTY DOWN THERE.

I'M STARTING TO THINK THEY WOULD HAVE PREFERRED HIM AS THE PRESENTER INSTEAD OF ME.



EVEN THOSE STUPID
BIMBOS WERE TREATED
BETTER THAN ME, ME, THE
ONE WHO RUNS THE
ENTIRE SHOW.

A woman with blonde hair, wearing a black and white vertically striped, long-sleeved, V-neck dress, is shown in a dark room. She has her eyes closed and her right hand is raised to her forehead, covering her eyes. The background is dark and out of focus, suggesting an indoor setting at night. A speech bubble is positioned to the left of her head.

WHY AM I EVEN
TRYING ANYMORE?
MAYBE I SHOULD JUST
QUIT AND BUILD
SOMETHING OF MY OWN
INSTEAD.

A woman with long, light brown hair is shown from the chest up. She is wearing a black dress with thin white vertical stripes and a deep V-neckline. Her expression is somber and thoughtful. A white speech bubble with a black outline is positioned to her left, containing text. The background is dark and out of focus, suggesting an indoor setting.

UGH, THIS IS ALL MY
FAULT; SOMETIMES I WISH
I HAD IT AS EASY AS THOSE
SILLY DOLLS, WITH JOBS
THAT NEVER SEEM TO
WEIGH ON THEM.

A woman with long, light-colored hair and blue eyes is shown from the waist up. She is wearing a black dress with thin white vertical stripes. She has a questioning expression on her face. The background is dark and out of focus, with some light reflecting off a surface to the left. A speech bubble is positioned to her left, containing text.

HUH? WHAT IS THAT
LIGHT, AND WHERE IS IT
COMING FROM?

HOLY HELL, IS THAT A
COMET? WHY IS IT SO
INCREDIBLY BRIGHT? DID
IT JUST... VANISH?



A woman with long, light brown hair is shown from the waist up. She is wearing a black, long-sleeved, form-fitting dress with thin white vertical stripes. Her expression is one of confusion or discomfort, with her mouth slightly open and her eyes looking off to the side. Her right hand is raised to her forehead, and her left arm is extended outwards. A white speech bubble with a black outline is positioned to her left, containing text. The background is dark and out of focus, suggesting an indoor setting.

WAIT... I FEEL
STRANGE...
WHOOOH... MY
HEAD...

A woman with long, light brown hair is shown from the waist up. She is wearing a black, long-sleeved, form-fitting dress with thin white vertical stripes. Her eyes are closed, and her mouth is slightly open in a pained or distressed expression. A speech bubble is positioned above her head, containing the text "OH GOD... IT FEELS LIKE I'M BURNING!". The background is dark and out of focus, suggesting an indoor setting with some furniture or objects visible in the shadows.

OH GOD... IT
FEELS LIKE I'M
BURNING!













SOMETHING IS...
JUST NOT RIGHT...
WHAT...

A close-up photograph of a woman with long, light-colored hair and blue eyes. She has a slightly open mouth and a concerned or questioning expression. A white speech bubble with a purple outline is positioned to the left of her face, containing the text "IS LIKE... GOING ON...". The background is dark and out of focus.

IS LIKE... GOING
ON...



WITH *TITTY*...?

WAIT... LIKE,
WHAT?! WHAT DID
TITTY JUST
SAID?





TITTY? OMG,
LIKE WHY AM I
LIKE, NAKED AND
STUFF!

OMG, LIKE LOOK
AT MY BIG TITTIES!
THEY'VE BECOME SO
DUCKING HUGIE!

HUH? LIKE, HOW DID
THE CITY GET SO
CLOSE? ME FEEL SO
CONFUSED! WHAT IS EVEN
HAPPENING RIGHT
NOW?!





HEY, LIKE,
ARE YOU
READY?

YEAH, LIKE
WE NEED TO
HURRY!



HUH?! WHO IS THAT?



WHAT DO
YOU LIKE,
MEAN?

YOU ZONED OUT
THERE FOR LIKE,
REALLY LONG
TIME!




B-BUT... BUT..
YOU GUYS ARE
THOSE SILLY
DOLLS!

A digital illustration of two women in Christmas attire. The woman on the left has dark hair in a bun, wears a dark red dress with a white fur collar and a green bow with a red bell. The woman on the right has blonde wavy hair, wears a red Santa hat and a red strapless dress with white fur trim and buttons. They are in a room with a Christmas tree in the background. A pink speech bubble is next to the woman on the left, and a yellow speech bubble is next to the woman on the right.

LIKE, LOOK
WHO'S TALKING!
MS. BIG TITS OUT
IN THE PUBLIC!

GIGGLE

A woman with long blonde hair, wearing a red Santa hat with white trim and gold stars, and a white top. She has very large, prominent breasts. She is standing in a room with a window in the background and a Christmas tree with lights on the left. A speech bubble is positioned to her left.

ME DON'T
UNDERSTAND! HOW
DID YOU GET IN HERE?
THIS IS TITTY'S ROOM!
Y-YOU ARE NOT
SUPPOSED TO BE
HERE!



AND WHY DID
EVERYTHING CHANGE?
T-THIS DOESN'T MAKE
SENSE! MAKES MY HEAD
HURT!




UH, LIKE WHY
WOULD YOU HAVE
A SEPARATE
ROOM?

YEAH, LIKE WE
ALL SHARE THE
SAME PLACE! LIKE
EVERY YEAR!

DADDY LIKES
US TO BE AT ONE
PLACE!

NO.. NO!! ME
MUST... GET OUT OF
HERE! ME NO
BELONG HERE!



A 3D-rendered scene depicting three women in a living room during Christmas. The woman on the left has blonde hair and wears a red Santa hat and a red strapless dress with white trim and buttons. The woman in the center has long blonde hair, wears a red Santa hat with white stars, and is topless with a red and white striped bikini bottom. The woman on the right has dark hair in a bun, wears a dark red dress with white trim and a green choker with a red bell. They are all holding wrapped gifts. The background shows a window with a night view, a white fireplace mantel with a candle and ornaments, and a bed with white linens.

YOU CAN'T
LEAVE! DADDY
WOULD BE VERY
ANGRY!

YEAH, AND ALL
THE OTHER GUY
WHO DADDY
THOMAS CALLED
FOR THE PARTY!



YEAH, LIKE
YOU'RE THE MAIN
ATTRACTION OF THIS
CHRISTMAS EVE
PARTY!

YOU'RE
GONNA SUCK SO
MUCH DICK
TONIGHT!

WAIT... YOU
SAID... DADDY
THOMAS?



BUT HE... HE
SUPPOSED TO BE
TITTY'S
ASSISTANT
DADDY!

NO, ME MEAN
TITTY'S
ASSISTANT,
DADDY!

YEAH AND
YOU ARE HIS
FUCKPILLOW!

DON'T
WORRY!
BEEING A
DUMMY IS
PART OF THE
JOB!

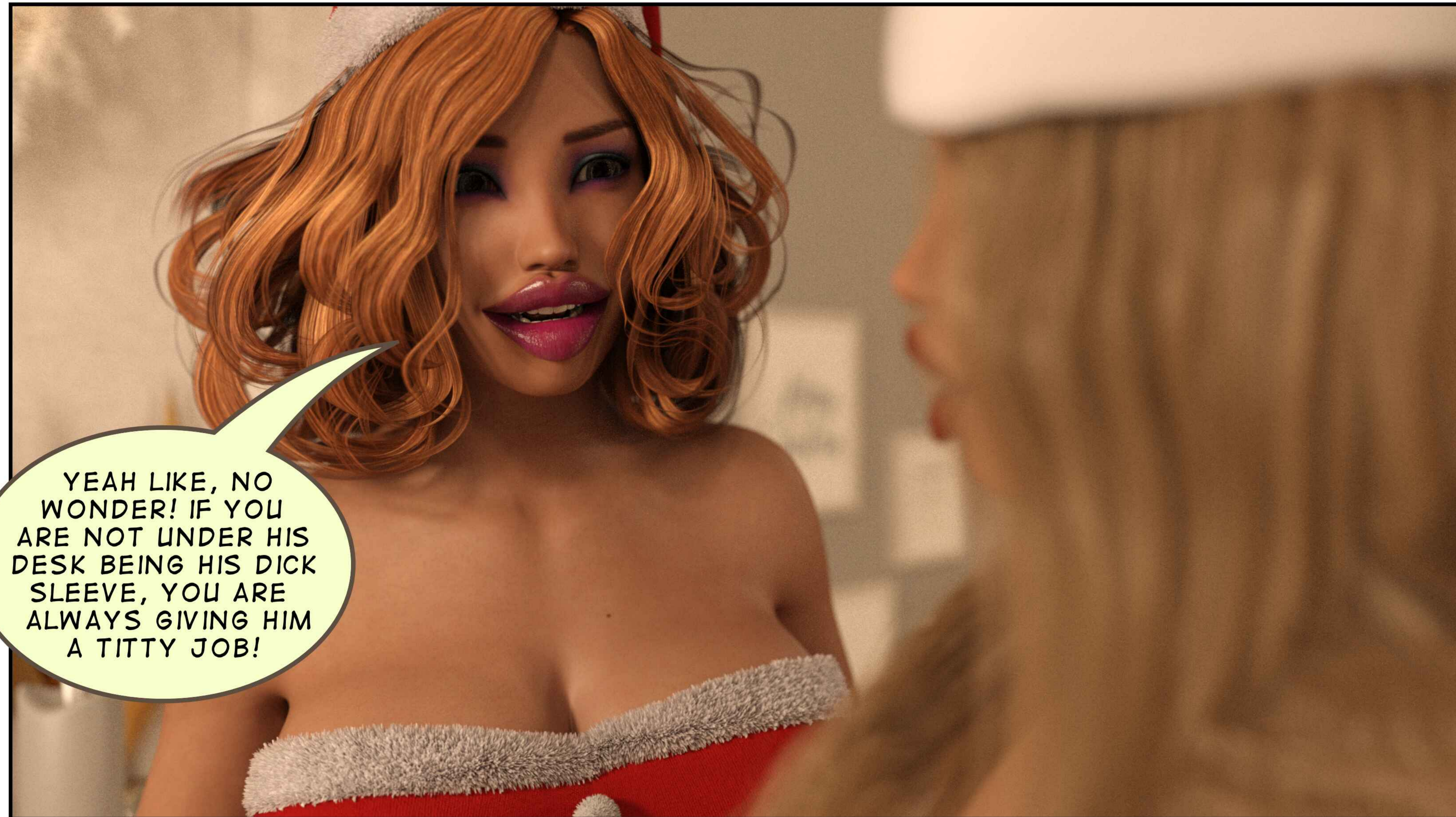
NO! THIS MUST
BE A DREAM! ME
NO TITTY! ME
TITTY!

BESIDES
YOU ARE HIS
FAVORITE!





WAIT... TITTY IS...
HIS FAVORITE?



YEAH LIKE, NO
WONDER! IF YOU
ARE NOT UNDER HIS
DESK BEING HIS DICK
SLEEVE, YOU ARE
ALWAYS GIVING HIM
A TITTY JOB!



YEAH! LIKE
THAT'S WHY YOU
HAVE SO MANY
NAMES! DICK-SLEEVE,
COCK-PILLOW, OR
JUST TITS!



TITTY IS REALLY
JUST... A COCK
PILLOW?

COME NOW!
IT'S TIME TO
SUCK SOME
DICKS!

THE END