



Earthlings

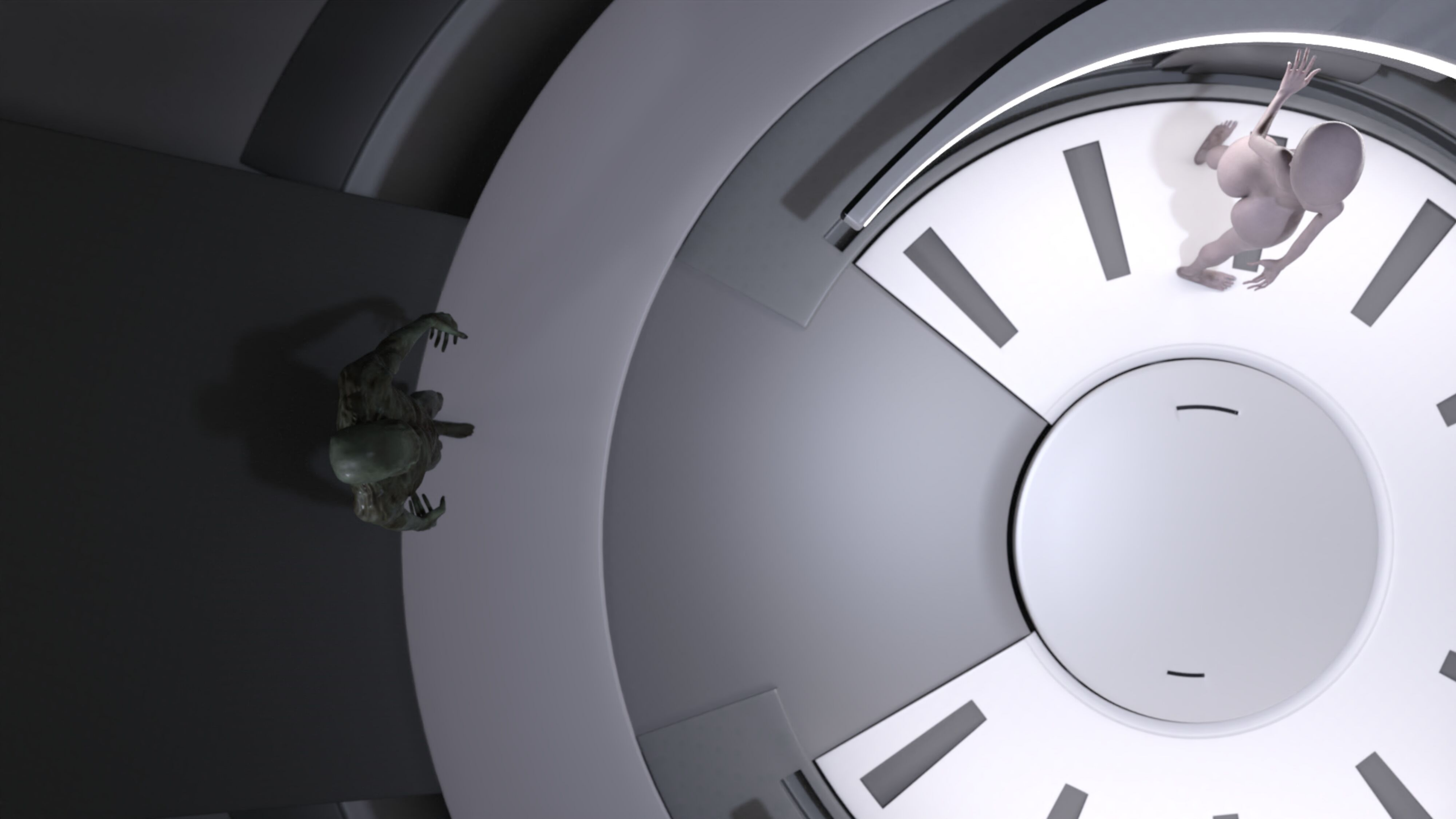
Chapter 1

ASTRALBOT3D



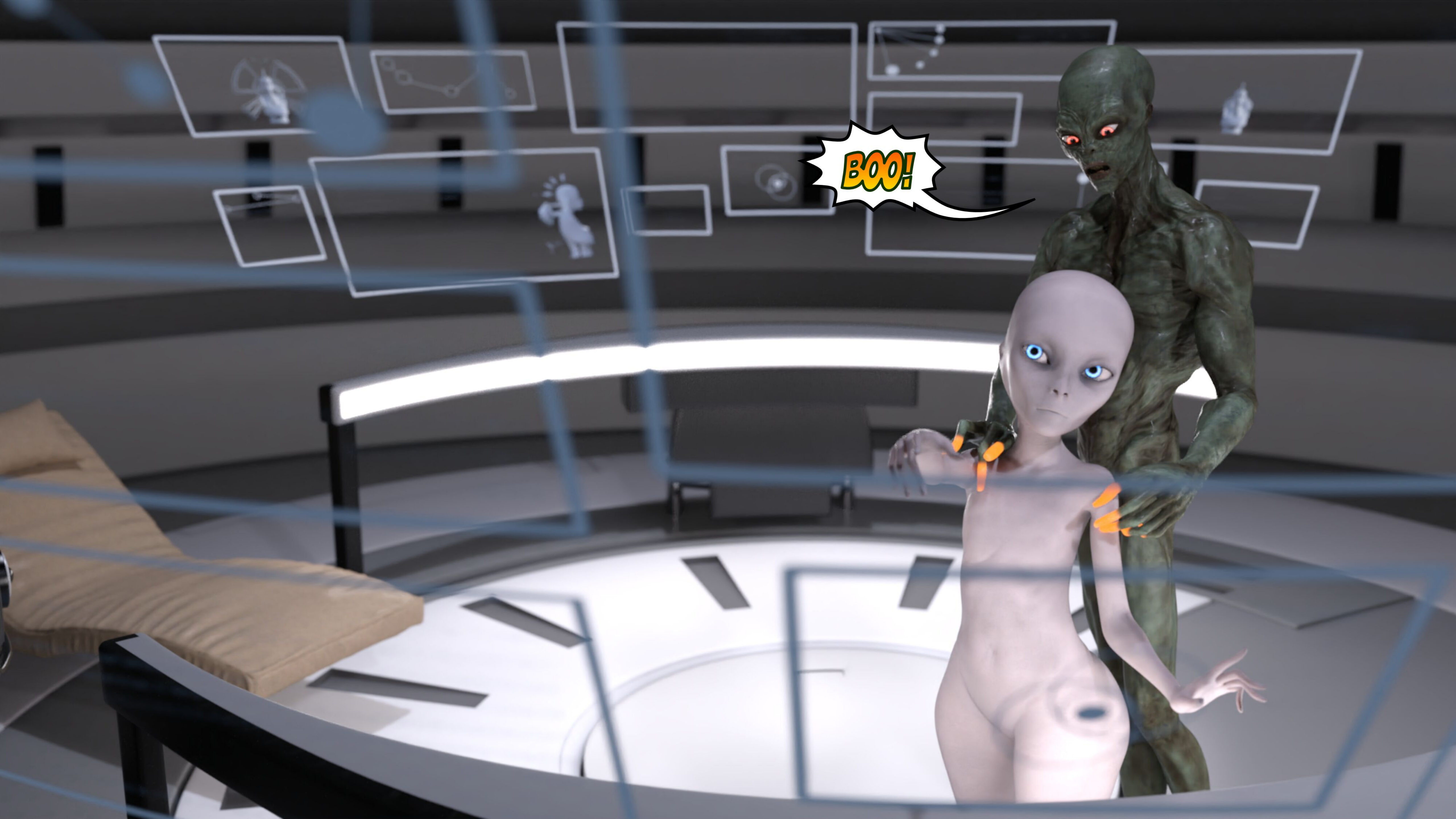














KLEIN, WHAT ARE
YOU DOING?

A green alien with a muscular, textured body and glowing red eyes stands on the left, looking towards a white, smooth-skinned alien on the right. The white alien is seen from the back, with its hands on its hips. They are in a futuristic, curved corridor with a starry space background and a control panel with various screens and buttons in the background.

HAHA...
ABOUT THAT.

I WAS STUDYING HUMAN
INTERACTION AND THAT'S
SOMETHING THEY DO
CALLED SURPRISING.

DID I SURPRISE
YOU AYIEN?



NO. I SENSED
YOU THE MOMENT
YOU WALKED
HERE.

ANYWAYS,
THANKS FOR
COMING LIKE I
ASKED YOU TO.

AS PART OF THE PLAN TO
LIVE WITH THE EARTHLINGS, IN
HAVE CREATED THIS DEVICE IN
ORDER TO UNDERSTAND THEIR
NATURAL LIVES.

I CALL THIS
DEVICE,
LINKED-IN.

FIRSTLY, WE WILL
INITIATE THE FIRST
PHASE OF THE PLAN.
UNDERSTAND THE MIND
AND BODY OF AN
EARTHLING.



THE SECOND PHASE
OF THE PLAN IS TO
CREATE SPECIAL SUITS
THAT WILL ENABLE US TO
LIVE ON EARTH.

THE THIRD PHASE
AFTER THAT IS TO
IMPROVE THE LIVES OF
THE EARTHLING. WE WILL
HELP ADVANCE THEIR
WAY OF LIVING.

BUT, LET'S NOT
GET AHEAD OF
OURSELVES.

WE MUST FIRST
LEARN MORE ABOUT
HOW THEY THINK AND
HOW THEIR BODIES
OPERATE.



AS THE EARTHLING
SAYING GOES, GOOD
THING I DID MY
HOMEWORK.

THE DEVICE
LOOKS FREAKY.



DID YOU ABDUCT
AN EARTHLING AND
TURNED IT INTO THIS
"LINKED-IN"
DEVICE?



NO
SILLY.

WE AREN'T
SAVAGES. WE DON'T
ABDUCT THIS LIVING
BEINGS.

LINKED-IN IS
CREATED WITH THE
SAFETY OF THE
EARTHLINGS IN
MIND.

IT IS INCREDIBLE
TECHNOLOGY. OUR
MINDS ARE LINKED WITH
AN EARTHLING I TARGET.

THEN, WE ARE ABLE TO
COLLECT THE DATA OF AN
EARTHLING'S EXPERIENCE.



I'M EXCITED
ABOUT THIS
SEAT.



ahhh



I'VE COPIED A
SEAT THAT THE
EARTHLINGS USE
AND MADE IT
ADVANCED.

THE MATERIAL IS
HIGH QUALITY AND I
EVEN MADE IT
FLOAT.



I LOVE
MY JOB...



SO COMFY,
I CAN STAY
HERE FOR
EONS.



AH

OKAY, I
GET IT.

DON'T WE HAVE
SOMETHING IMPORTANT
TO DO AYLIEN?



RIGHT, SORRY
ABOUT THAT. I
JUST LET MYSELF
GO ON A TRIP.

LET BEGIN. GET
COMFORTABLE
ON THE SEAT.

woosh

wlop



UHH HELLO?
THIS SEAT IS NOT
LONG ENOUGH TO
FIT ME.

HALF OF MY LEG
ARE HANGING.



WELL... I DESIGNED
IT AFTER MY BODY
SPECIFICATIONS.

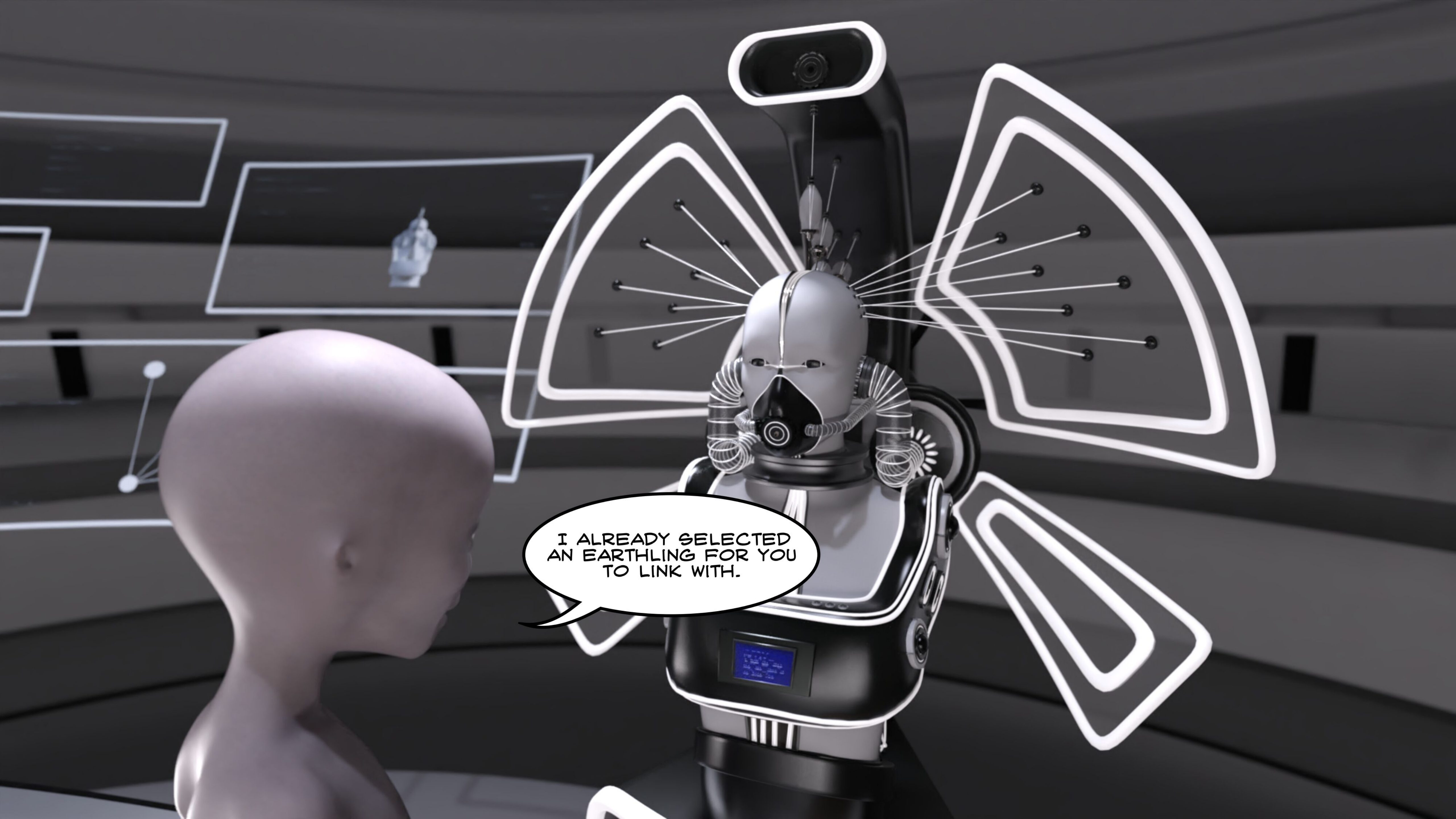
MAKE A NOTE TO
INCLUDE ME IN
YOUR DESIGNS.

I HAVE UNIVERSAL
RIGHTS TOO YOU
KNOW!



LET'S BEGIN
THE LINKING
PROCESS.

ACTIVATE



I ALREADY SELECTED
AN EARTHLING FOR YOU
TO LINK WITH.



COLLECT ALL
THE DATA YOU
CAN.

YOU HAVE LITTLE
TIME BEFORE YOU
ARE LINKED BACK
TO YOUR BODY.

TRY TO UNDERSTAND
THE WAY THEIR BODIES
AND WHAT THEY KNOW.

GOODLUCK KLEIN.



AS ONE
EARTHLING
ONCE SAID,

"I'LL BE BACK."





A person's hand is holding a small green lizard. The background is dark with a circular light pattern. The text "linked in..." is overlaid in the center.

linked in...



HEHE.

I HOPE HE DOESN'T
GET TOO ADDICTED.

I PROBABLY SHOULD HAVE
SELECTED A DIFFERENT
EARTHLING.

OH WELL...



YOU FEEL
WONDERFUL.

YES!

I'M ABOUT
TO CUM!



HEY! WHY DID
YOU STOP MOVING
TAM?



? ~ ~ ~ ☀ ~ ~ ~ # 👤 👤 ...



What the hell are you saying?
Did I smash you that hard?

WHAT THE HELL ARE YOU SAYING?

DID I SMASH YOU THAT HARD?





NHHH

I'M COMING!!!



AH

THAT WAS
PERFECT
TIMING...

THAT WAS A
BIG LOAD.

A woman with blonde hair, wearing a grey one-piece swimsuit, is sitting on a dark brown wooden bench. She is looking down at her lap, where her hands are resting. A speech bubble is positioned above her head. To her right, on the bench, is a red and black plaid shirt. The floor is made of large, light-colored tiles. The scene is brightly lit, suggesting an outdoor pool setting.

SOMETHING WARM IS
FLOWING INSIDE OF
ME.

OH

OH






THIS MUST BE PLEASURE.
IT'S OVERWHELMING MY
SENSES.

AH



LET ME SOAK IN
THIS FEELING A
LITTLE LONGER.


A close-up photograph of a woman from the chest down to the waist. She is wearing a grey, textured, halter-neck bra and matching grey underwear. Her hands are placed on her breasts, with her fingers spread. The background is a blurred indoor setting, possibly a kitchen or dining area, with a wooden table and white chairs visible. The lighting is soft and natural, highlighting the texture of the fabric and the skin.

THESE MUST BE THE
EARTHLING'S BREAST.
QUITE AN INTERESTING
SENSATION ONCE I
GRABBED THEM.



mhhh
MOAN



A man with dark, wavy hair is lying on his back on a dark brown wooden bench. He has his eyes closed and a slight smile on his face. To his right, a woman's leg in a grey tank top is visible, resting on the same bench. The background is a light-colored tiled floor. Two speech bubbles are positioned above the man's head.

TAM, YOU CAN GET
OFF OF ME ANYTIME
NOW. I'LL JUST REST
HERE FOR A BIT.

UNLESS YOU WANT TO
GO FOR ROUND THREE?
I'M STILL HARD.

A woman is shown from the waist down, wearing a black thong. She is standing in a modern living room with light blue armchairs and a wooden floor. The scene is brightly lit, likely from a window in the background. A speech bubble is positioned to the right of the woman's legs.

*I CAN STILL FEEL THE
TINGLING SENSATIONS.*

*HMM? SOME SORT OF FLUID?
EARTHLING LOVE JUICE?*







INTERESTING, SUCH A
SOFT TEXTURE. QUITE
A BITTER TASTE TO IT.



I TRIED TO UNDERSTAND THE SITUATION I WAS IN. I WAS IN THE BODY OF A FEMALE EARTHLING MATING WITH A MALE EARTHLING.

I COLLECTED DATA ON THE OVERALL FORM OF THE MALE EARTHLING.

A woman with long, wavy brown hair and blue eyes is standing in a modern, brightly lit living room. She is wearing a grey, form-fitting, one-piece swimsuit with cutouts at the waist and back. She is looking over her shoulder towards the camera with a slight smile. Her right arm is extended forward, and her left hand is resting on a wooden coffee table. In the background, there is a light blue sectional sofa, a large window with white frames showing a view of a desert landscape with mountains, and a framed picture of several fish on the wall. A person is lying face down on the coffee table in the background.

I HAD TO SEE HOW A FEMALE EARTHLING
LOOK LIKE. SOMEHOW I KNOW THERE IS A
MIRROR SOMEWHERE IN HERE.





WOW.

BREATHTAKING.





FEMALE EARTHLINGS
ARE QUITE THE BEAUTY.

NGH







KLIENNN?



HELLO?





AYLEIN!
THAT FELT
AMAZING.

GAWHAHAH





I KNOW
RIGHT.



SEEMS TO ME YOU ARE
STILL FEELING THE PHANTOM
SENSATIONS.

BE CAREFUL NOW, WE
DON'T HAVE ANY SEXUAL
ORGANS LIKE THE
EARTHLING DO.



OH. I WANT TO GO
LIVE ON EARTH AS AN
EARTHLING NOW.

SPECIFICALLY A
FEMALE EARTHLING
PLEASE.



I STILL HAVE SEVERAL MORE
TEST TO RUN BEFORE WE BEGIN
THE SECOND PHASE.

WE CAN SPEED UP THE
PROCESS THOUGH.

HOLD YOUR
ALIEN HORSES.




I'LL LINK YOU UP WITH SEVERAL
OTHER EARTHLINGS IN ORDER TO
HAVE A GENERAL UNDERSTANDING
OF THE FEMALE FORM.

YOU'LL ALSO GAIN THEIR
KNOWLEDGE EVERY TIME I LINK
YOU WITH AN EARTHLING. THINK OF
IT AS COPY AND PASTING WHAT
THEY KNOW INTO YOUR MIND.



PLEASE LINK ME
EXCLUSIVELY FEMALE
EARTHLINGS. I'M VERY
CURIOUS ABOUT THE
FEMALE BODY SINCE
MY FIRST LINK.



WELL THEN,
SHALL WE BEGIN
MORE TESTS?



LET'S
DO IT!



NOD





ANOTHER ROUTINE
AT THE GYM.

SIGH

WHAT'S TODAY?
LEG DAY?



NGHHH...

A woman with short, straight grey hair and a red tank top is shown from the chest up. She is looking slightly to her left with a concerned expression. The background is a gym with various exercise machines and bright overhead lights.

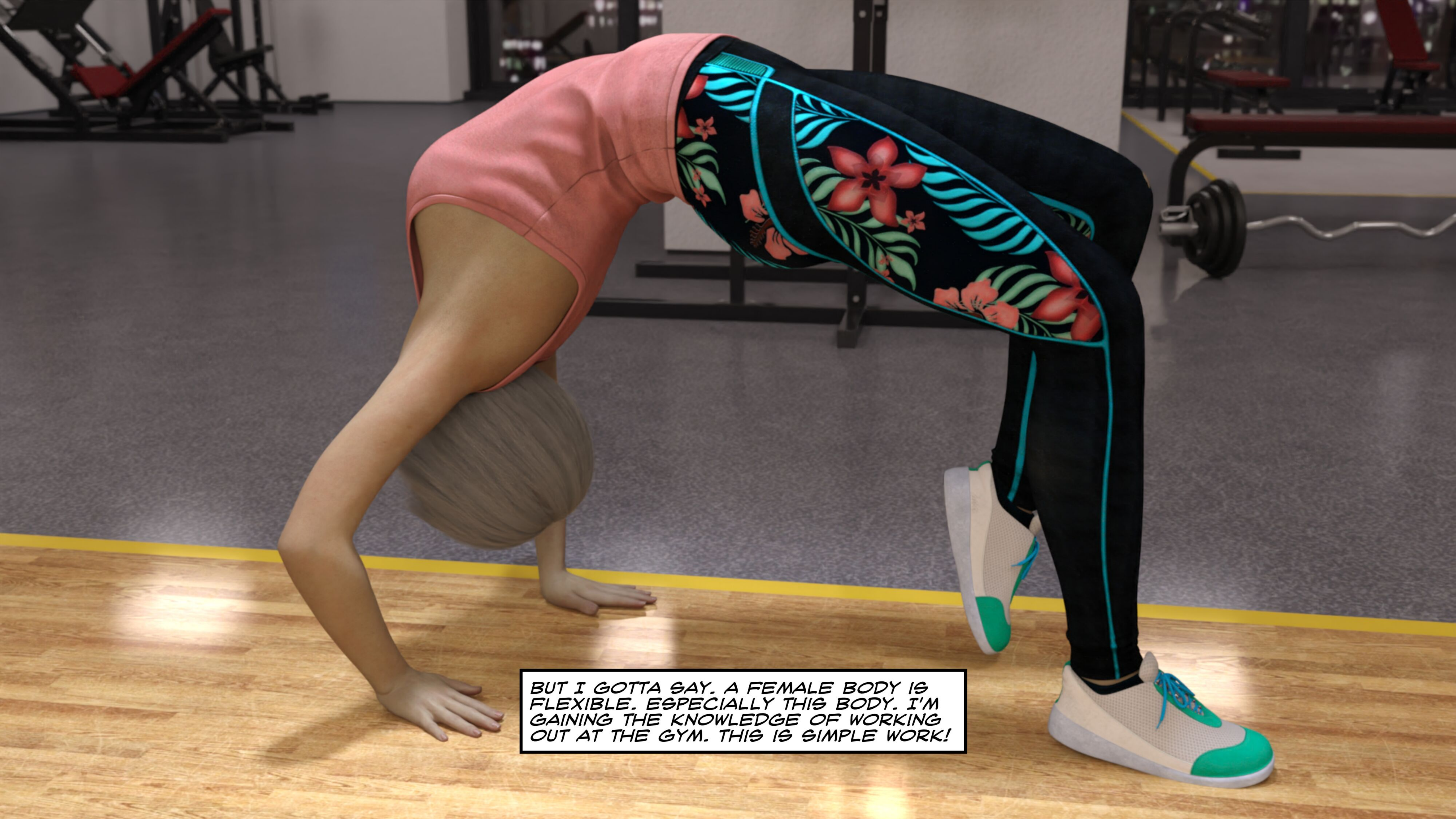
WHERE AM I
NOW?

A 3D rendered female character with short, straight grey hair and a red tank top is shown in a gym environment. She is looking slightly to her left with a subtle smile. Her right hand is placed on her chest. In the background, there is a black metal gym rack and bright overhead lights. A speech bubble is positioned to her left.

YES! A FEMALE
EARTHLING AGAIN.



I MISSED FEELING THE SENSATIONS OF A BREAST. ALTHOUGH THIS ONE IS A LITTLE BIT SMALLER COMPARED THE THE FIRST FEMALE EARTHLING I EXPERIENCED.



BUT I GOTTA SAY. A FEMALE BODY IS FLEXIBLE. ESPECIALLY THIS BODY. I'M GAINING THE KNOWLEDGE OF WORKING OUT AT THE GYM. THIS IS SIMPLE WORK!



*I'M STARTING TO FEEL HOT
FROM THE MOVEMENTS I MAKE.*



NGHH...

WHAT THE HECK
WAS THAT? WHERE
AM I NOW?



HAHAHA!

AYIEN, YOU
KNOW ME
WELL!

WAIT, I KNOWING MUCH
MORE ABOUT EARTHLING
KNOWLEDGE...



YES, NOW I UNDERSTAND MORE
ABOUT THIS WORLD. THIS WOMAN'S
KNOWLEDGE IS NOW MINE.



HUMANS ARE PRIMITIVE
CREATURES, BUT I MUST
GIVE THEM CREDIT FOR
THE ACCOMPLISHMENTS
THEY ACHIEVED.



I FEEL ODDLY DIFFERENT
COMPARED TO THE OTHER
WOMEN I WAS IN.

FULLY AND BIGGER IN
MY BREASTS AND MY
GLUTEUS MAXIMUS...



I KNOW MY TIME IS LIMITED...



BUT I'M REALLY GOING TO
MISS HAVING THIS BODY.



THIS WOMAN IS
ONE OF MY
FAVORITES.

I'LL MISS YOU
DEARLY.





NGHH....

I FEEL MUCH
BIGGER.



HOLY SHIT
AYIEN!

I'M IN LOVE WITH THIS
WOMAN'S BODY!




OH MY
GOD!

LIKE THE WAY SHE
THINKS IS FILLING UP
MY MIND WITH
EXCITEMENT!

I UNDERSTAND
HOW TO PLEASURE
MEN NOW...

... AND WOMEN.



YES. THIS IS THE RIGHT
BODY FOR ME. I'LL MAKE
SURE THAT AYIEN MAKES THE
RIGHT SPECIFICATIONS FOR MY
REQUESTED BODY.



THIS ONE BY FAR IS THE
BEST BODY AND MIND I LOVE.

I CAN FEEL ALL OF HER PAST
EXPERIENCES. COPIED ONTO
MY MIND.



EVERY SENSATIONS.



EVERY TASTE.

A woman with dark hair in a red leotard and fishnet stockings is sitting on a dark brown couch. She is looking towards the camera with a slight smile. Her right arm is resting on the couch, and her left hand is on her hip. A drink with a straw is visible on the couch to her left.

I WANTED TO STAY LONGER IN
THIS STRIPPER'S BODY, BUT I
KNEW THAT MY TIME WAS LIMITED.

AT LEAST I HAD A SIP OF
MARGARITA BEFORE I LEAVE.



I'LL MISS THIS
BODY EVEN
MORE!



NGHHH...








AYIEN!!!

I WANT TO BE THE
MOST SEXIEST WOMEN
ON EARTH. I'LL MAKE
THE EARTH A BETTER
PLACE!

A green alien with red eyes and a white alien are in a futuristic room. The green alien is speaking and gesturing with its hands. A robot is visible on the left, and a large screen with a network diagram is in the background.

THERE'S SO MANY
THING I WANTED TO
DO AS A WOMEN.

I HAVE THEIR
EXPERIENCES AND
KNOWLEDGE, BUT I WANT
TO EXPERIENCE IT FOR
MYSELF.




WOW, YOU'RE REALLY
ADDICTED TO A FEMALE
EARTHLING NOW AREN'T
YAH?

I HAVE GOOD NEWS FOR YOU. WE
COLLECTED THE NECESSARY DATA
AND CAN NOW MOVE ONTO CREATING
EARTHLING CLONES.

WE WILL MOVE INTO PHASE TWO OF
THE PLAN AND WEAR THESE CUSTOM
CLONES AS SUITS TO INHABIT WITH
THE EARTHLINGS.



BY THE WAY, I WANT TO
HAVE BIG BOOBS AND A
BODY MADE FOR SEX.



DON'T WORRY KLEIN, I'LL
MAKE ALL THE CLONES YOU
WANT SO YOU CAN CHOOSE
WHICH EVER ONE YOU WANT
TO WEAR ON EARTH.

TO BE CONTINUED...