

Earthlings

Chapter 2



ASTRALBOT3D







HEY AYIEN.

YOU DON'T LOOK
SO GOOD.

YOU MUST BE EXHAUSTED
FROM TESTING THE MACHINE
WITHOUT ME?!



NO YOU
KNUCKLEHEAD.

I'VE BEEN STRESSING OUT
OVER SOME OTHER ISSUES.



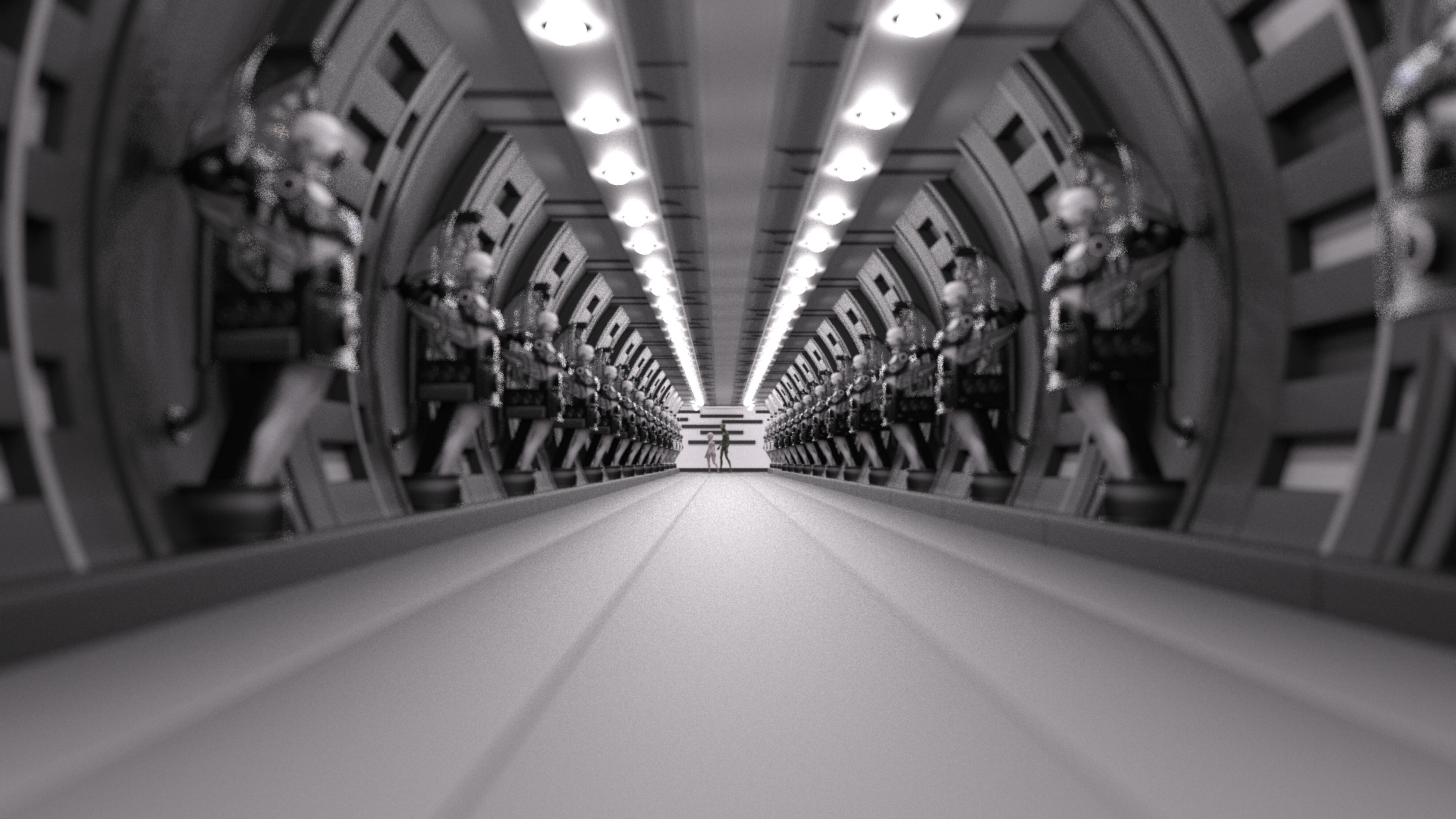
ANYWAYS, ARE YOU READY TO TRY OUT
THE SUIT I'VE BEEN DEVELOPING?

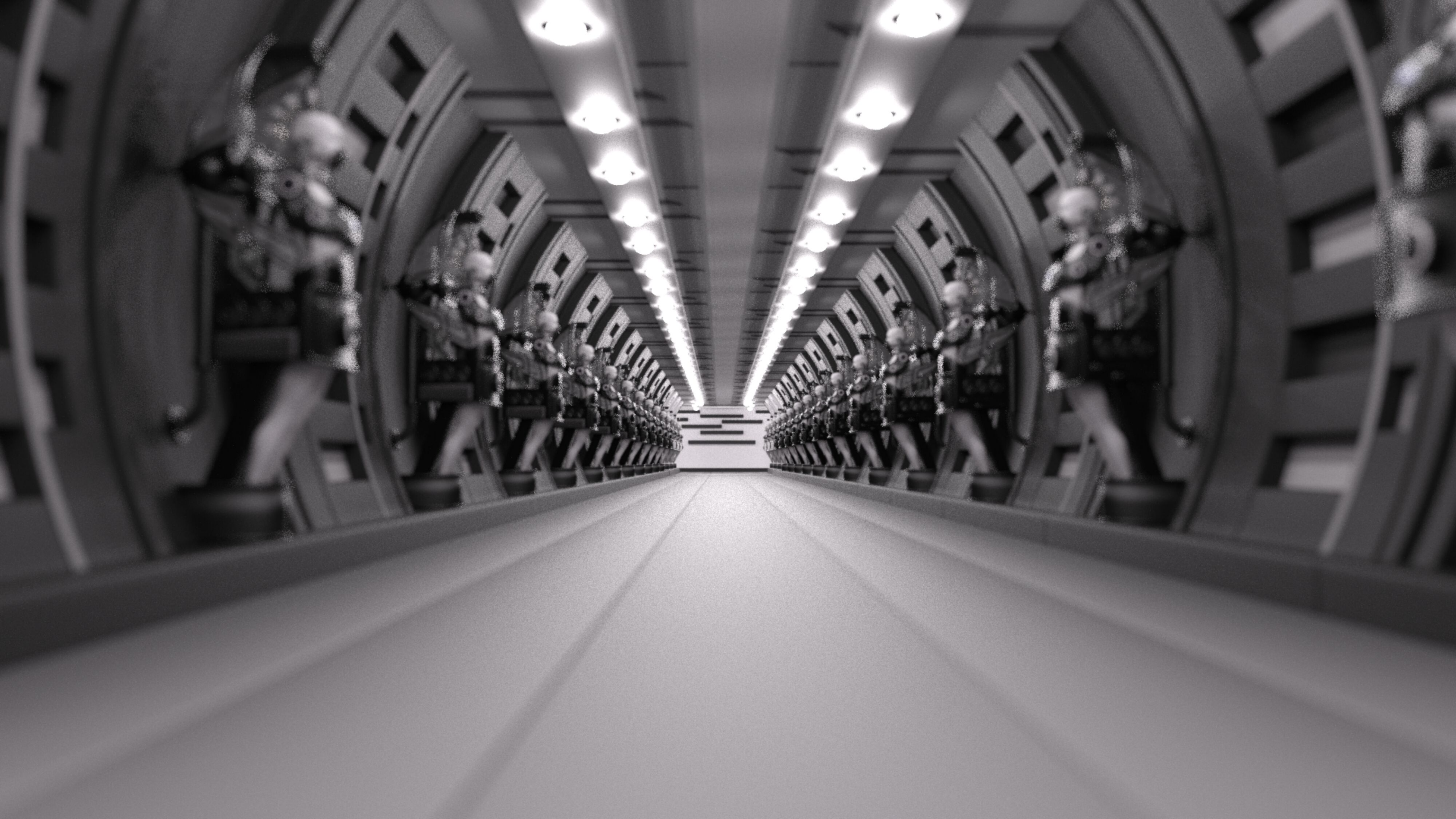


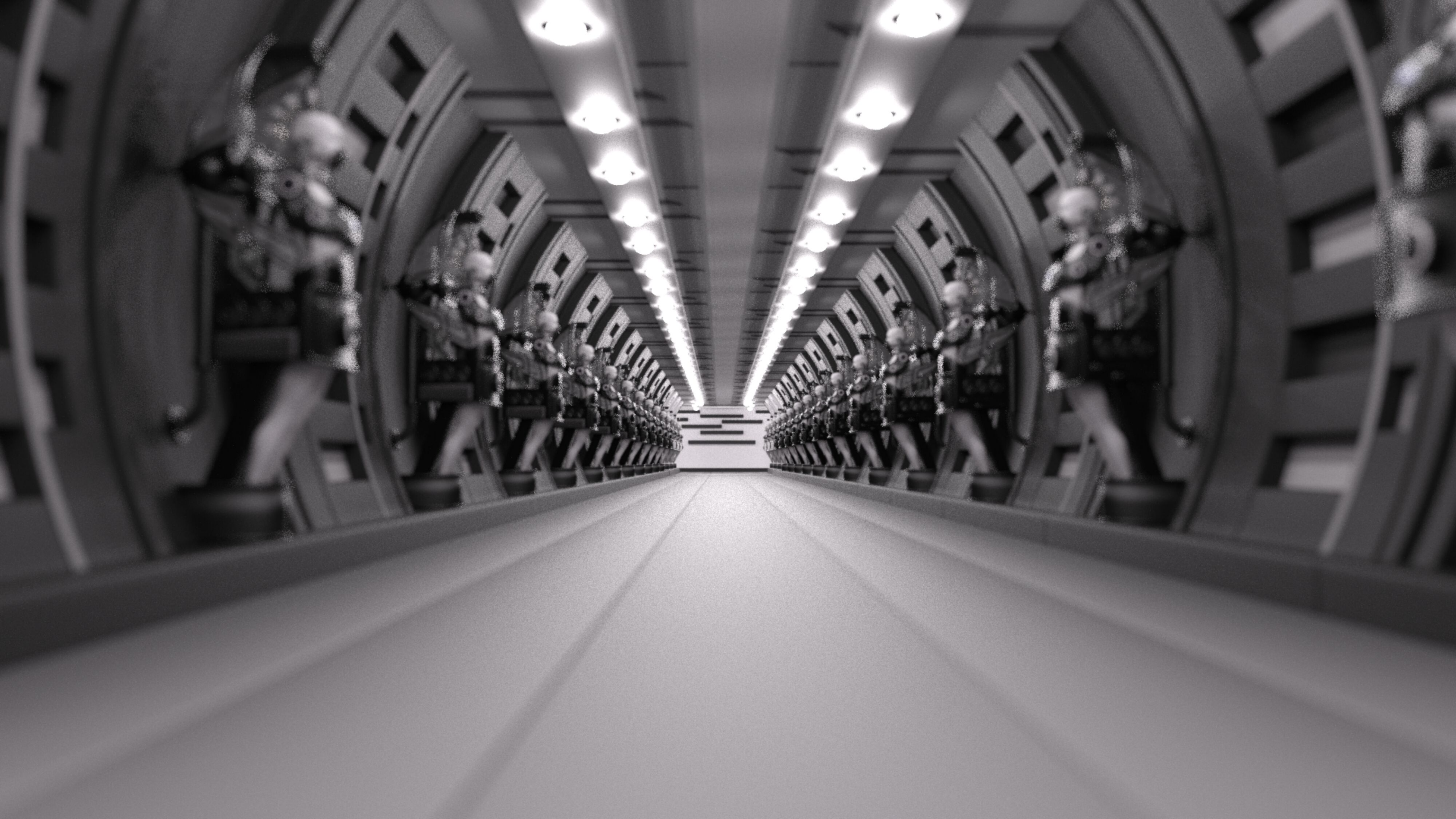
YES!

I'M MORE THAN READY
TO TEST IT OUT!

GOOD TO HEAR KLEIN. I
KNOW YOU'LL LOVE IT.









A 3D rendered scene featuring two extraterrestrial characters in a dark, industrial environment. On the left, a tall, grey, muscular alien with a wrinkled, reptilian-like skin texture and glowing red eyes stands with its arms slightly out. On the right, a shorter, smoother, grey alien with large, glowing blue eyes stands facing the first alien. The background is filled with dark, metallic structures, including railings and panels with geometric patterns. A red cable is visible in the bottom left corner. Two white speech bubbles with black outlines contain text.

WOW, FANCY PLACE.
I HAVEN'T BEEN IN
HERE YET.

YEAH, IT'S ON THE
DOWN-LOW. ONE OF OUR
ADVANCE TECH USED IN THIS
ROOM.



SHE LOOKS WONDERFUL!

YEP, AN EXACT REPLICA OF AN EARTHLING.

WE'LL CALL IT THE HUMAN SUIT.

IT'S STILL IN ITS TESTING PHASE, BUT IT SHOULD BE FULLY FUNCTIONAL.

YOU'LL BE ABLE TO FEEL
ALL THE SENSES A HUMAN
WOULD FEEL.





TWITCH

TWITCH

DID YOU
SEE THAT?!

THE SUIT'S
NIPPLE JUST
GOT HARD!

A woman with a shaved head and closed eyes is shown from the chest up, wearing a futuristic, form-fitting suit. She is positioned in the center of the frame, looking down. The background is a dark, textured surface with white structural elements. To her left, there are two orange cables and a blue cable. In the bottom right corner, there is a green and white HUD overlay with various symbols and lines.

WELL, THE SUIT IS
TECHNICALLY ALIVE
SO TO SPEAK.

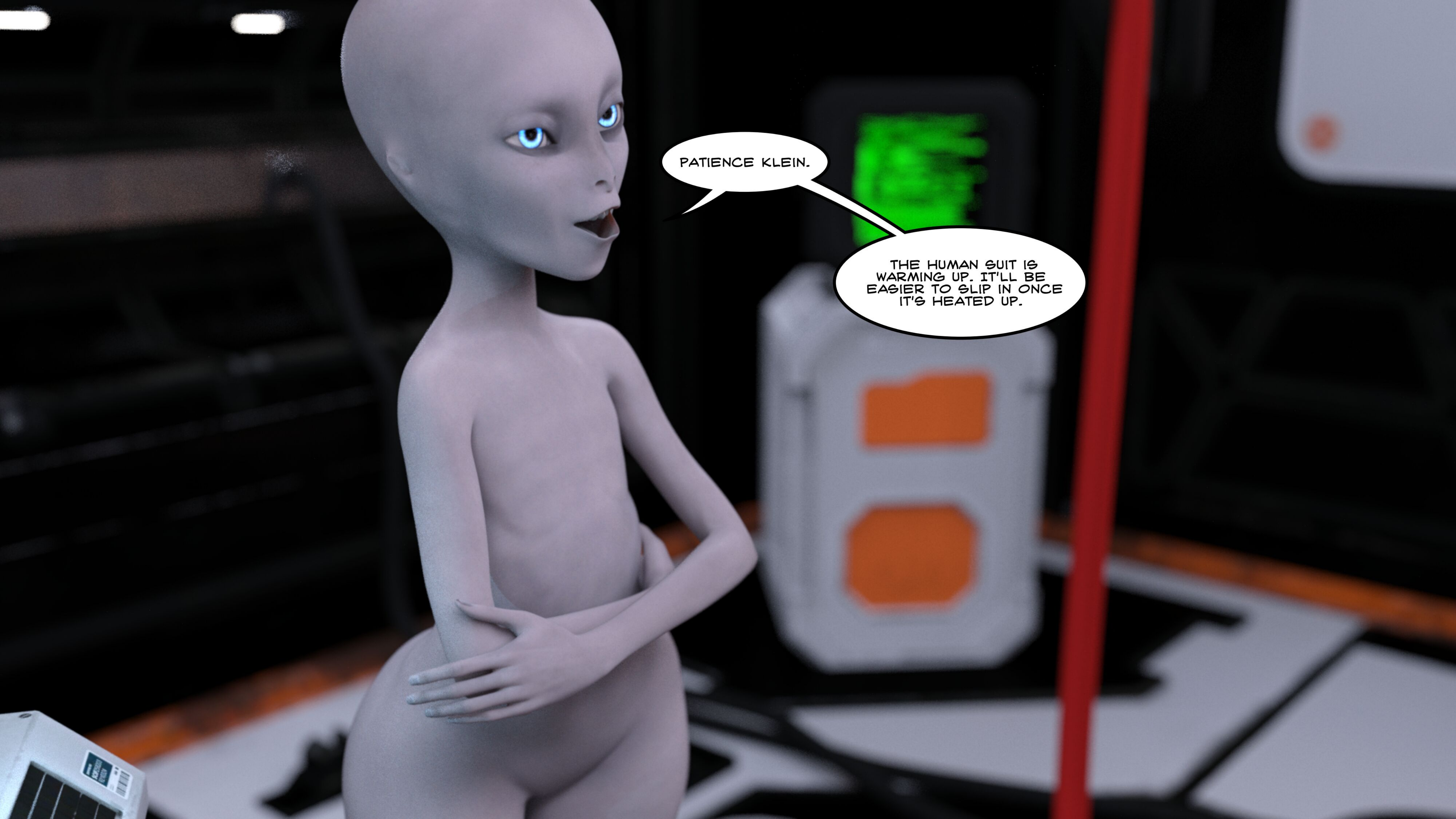
IT'S ONE OF THE WAYS
TO MAKE THE HUMAN SUIT
CONNECT MUCH MORE
CLOSER TO THE SUIT'S
WEARER.



OH MY GOODNESS. I'M
REMEMBERING ALL THE
SENSATIONS I FELT FROM
LAST TIME.



CAN I WEAR THE
HUMAN SUIT NOW?

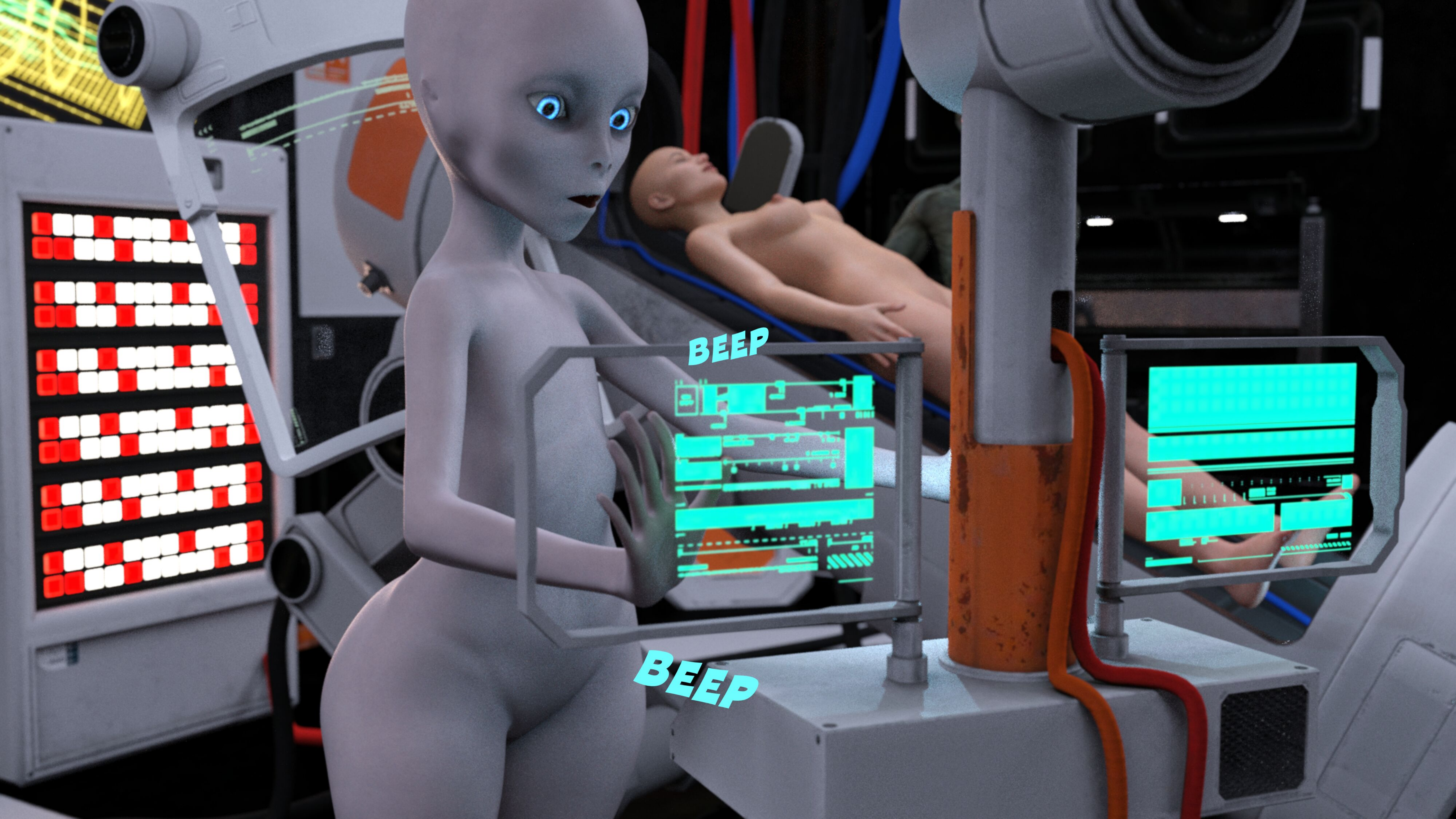


PATIENCE KLEIN.

THE HUMAN SUIT IS
WARMING UP. IT'LL BE
EASIER TO SLIP IN ONCE
IT'S HEATED UP.

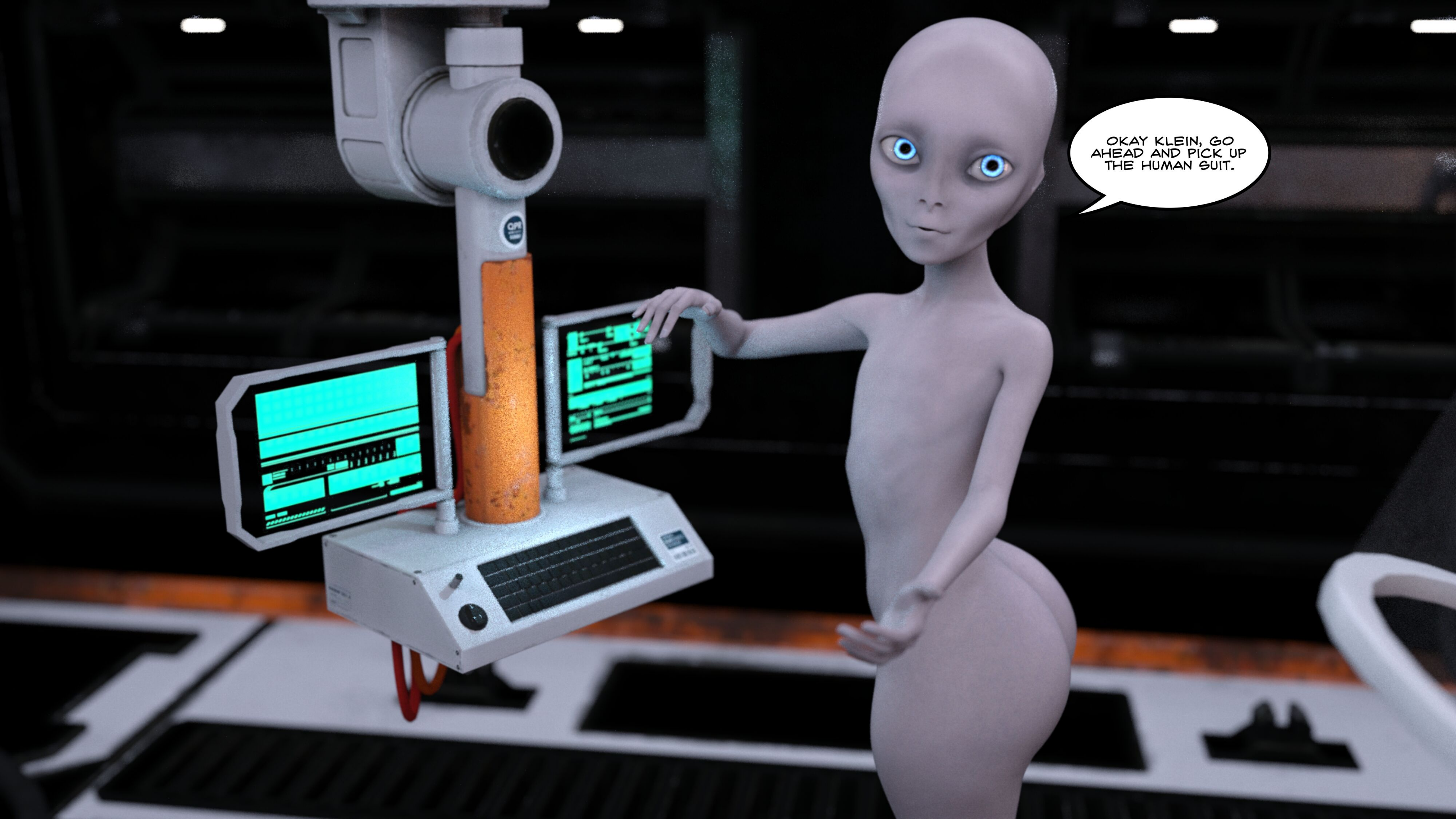


THE HUMAN SUIT'S
PREPARATIONS ARE
READY.



BEEP

BEEP



OKAY KLEIN, GO
AHEAD AND PICK UP
THE HUMAN SUIT.

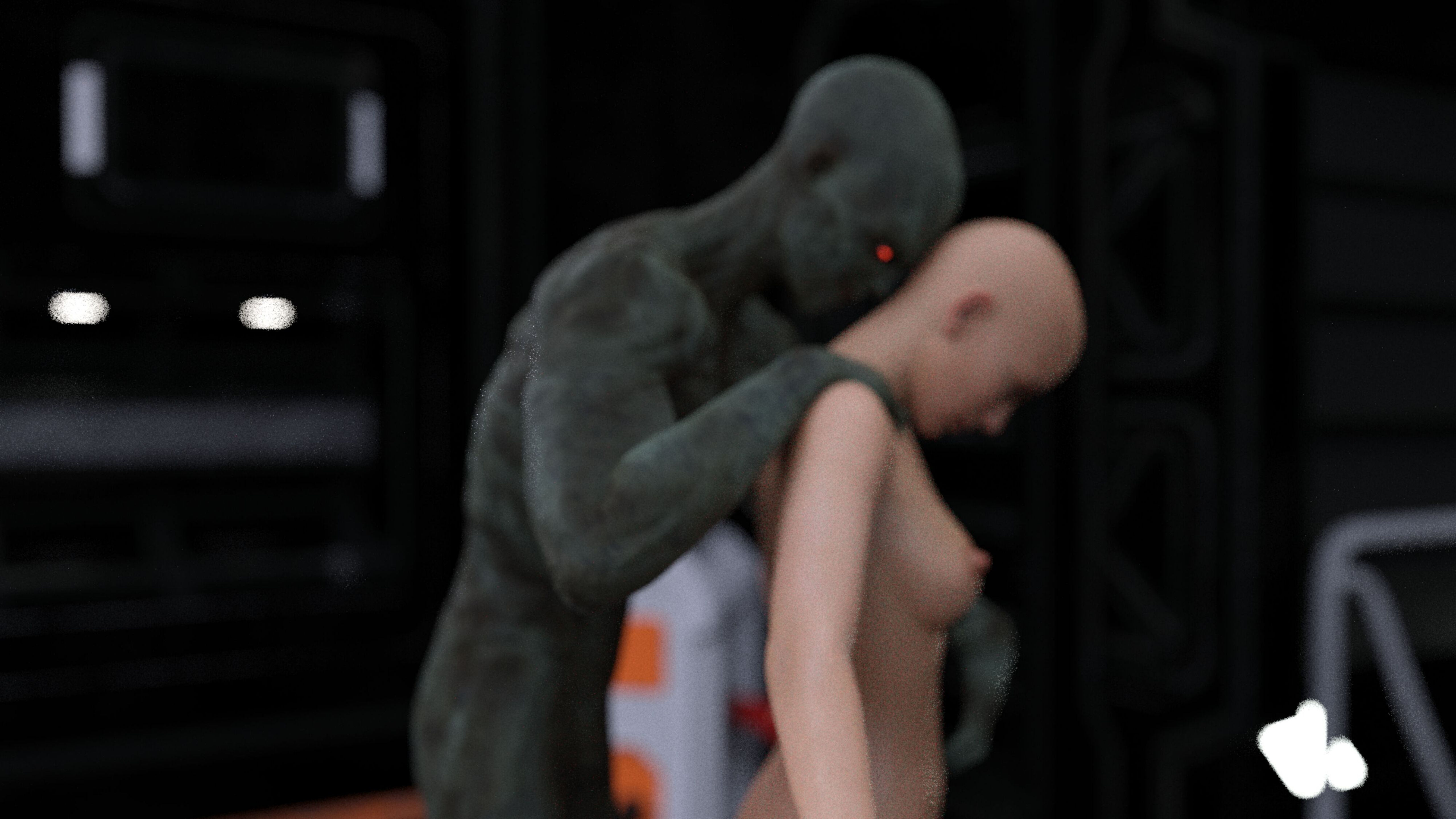




WOW, SHE'S WARM.
THE HUMAN SUIT IS
TURNING ME ON.













АНН



WONDERFUL!

THE HUMAN SUIT
FUSED FASTER THAN
I THOUGHT.










AYLIEN!
I'M IN!

MY SENSES ARE
EXTRAORDINARY!

I CAN FEEL EVERYTHING
COMPARED TO LAST TIME. MY
NIPPLES ARE STILL TINGLING
WITH PLEASURE.

A bald woman with a sad expression, holding her hands near her face, with two speech bubbles. The background is dark with some geometric shapes.

IT FEELS LIKE
ELECTRICITY. A NEVER
ENDING CURRENT FOCUS
ON THESE TWO POINTS.

I AM QUITE SAD THAT THIS HUMAN
SUIT DON'T HAVE BIGGER BREASTS. I
REALLY LIKED THOSE WHEN I WERE IN
THOSE EARTHLINGS.



THAT BRINGS ME TO
THE NEXT PART OF THE
HUMAN SUIT.

JUST LIKE IN THE OTHER
PHASE, YOUR MIND IS NEURALLY
LINKED TO THE HUMAN SUIT TO
PROVIDE A GREATER
EXPERIENCE.

THE HUMAN SUIT IS ALSO
EQUIPPED WITH ADVANCE NANO
TECH. WHICH ALLOWED YOU TO
EASIER SLIP INTO THE HUMAN
SUIT.

ALL YOU NEED TO DO IS
PROVIDE THE SUIT WITH YOUR
THOUGHTS AND IT WILL
CHANGE.



SOUNDS EASY
ENOUGH.









WOW, AWESOME! I
LOVE THIS VIEW.



HOW DO I
LOOK
AYIEN?

THEY DON'T
LOOK TOO BIG
ON ME RIGHT?





KLEIN, YOU CAN'T BE
WALKING AROUND EARTHLINGS
WITH NO HAIR. TRY THINKING
OF A HAIR YOU'LL LIKE.



OH, I
KNOW!





HEH, SEEMS LIKE YOU
GOT THE HANG OF THIS.
YOU EVEN CHANGED YOUR
SKIN.



YOU CAN ALSO
CHANGE OTHER
PHYSICAL FEATURES
SUCH AS YOUR
HEIGHT.





A woman with voluminous curly brown hair and red lipstick is shown from the chest up, looking towards the left. She is in a dark, futuristic environment with various panels and lights. Two speech bubbles are present: one from her and one from an unseen character.

WOW. YOU
LOOK SO SHORT
AYIEN!

MY ARMS ARE SLENDER
ALONG WITH MY LEGS AS
WELL. ALMOST TO MY
NORMAL HEIGHT.

A 3D rendered scene featuring a pale, slender alien with large, glowing blue eyes and an open-mouthed expression of surprise or excitement. The alien stands in a futuristic laboratory or control room, with its arms raised. In the background, there is a control panel with a green digital display showing some illegible text, and a white cabinet with two orange-lit compartments. To the right, a person's arm and hand are visible, reaching towards a control interface. The floor is composed of black and white rectangular tiles. Two speech bubbles are present on the left side of the frame.

AND LASTLY, THE HUMAN SUIT
IS CAPABLE OF GENERATING
CLOTHING. ANY APPAREL AT
YOUR FINGERTIPS.

THINK OF SOMETHING YOU'LL
ENJOY WEARING.

A woman with voluminous, curly brown hair and bright green eyes is looking directly at the camera. She has red lipstick and is unclothed. Her right hand is raised near her face. The background is dark with several out-of-focus, glowing white light sources. A white speech bubble is positioned to the left of her head.

HMM, I WAS
RESEARCHING SOME
EARTHLING CLOTHING.
LET'S TRY THIS OUT.



A woman with dark curly hair, wearing a white lace-trimmed halter dress and white thigh-high stockings, stands in a dark, industrial-looking environment. She is looking down at her dress. To her right is a large, white, stylized mannequin of a female figure. In the background, there are dark metal structures and a small screen displaying green digital code. A speech bubble is positioned above her head.

HMM...
SMOOTH AND
SILKY.



OH! I JUST
REMEMBERED
THIS OUTFIT!

THIS WAS ONE OF THE
EARTHLING'S CLOTHING. I
THINK IT'S FITTING THAT I
WEAR THIS FIRST.



SOMETHING
ABOUT THIS
MAKES ME FEEL
DOMINATING.

I LIKE IT.



WELL, THAT'S ALL I HAVE
FOR YOU. TIME TO SEND
YOU TO EARTH AND DO
SOME WORK.

WONDERFUL, THEY
WON'T BE ABLE TO
HANDLE ME. HEHE.

CAUTION



OH SURE.

NOW DON'T
FORGET ABOUT
YOUR MISSION WHILE
YOU'RE ON EARTH.



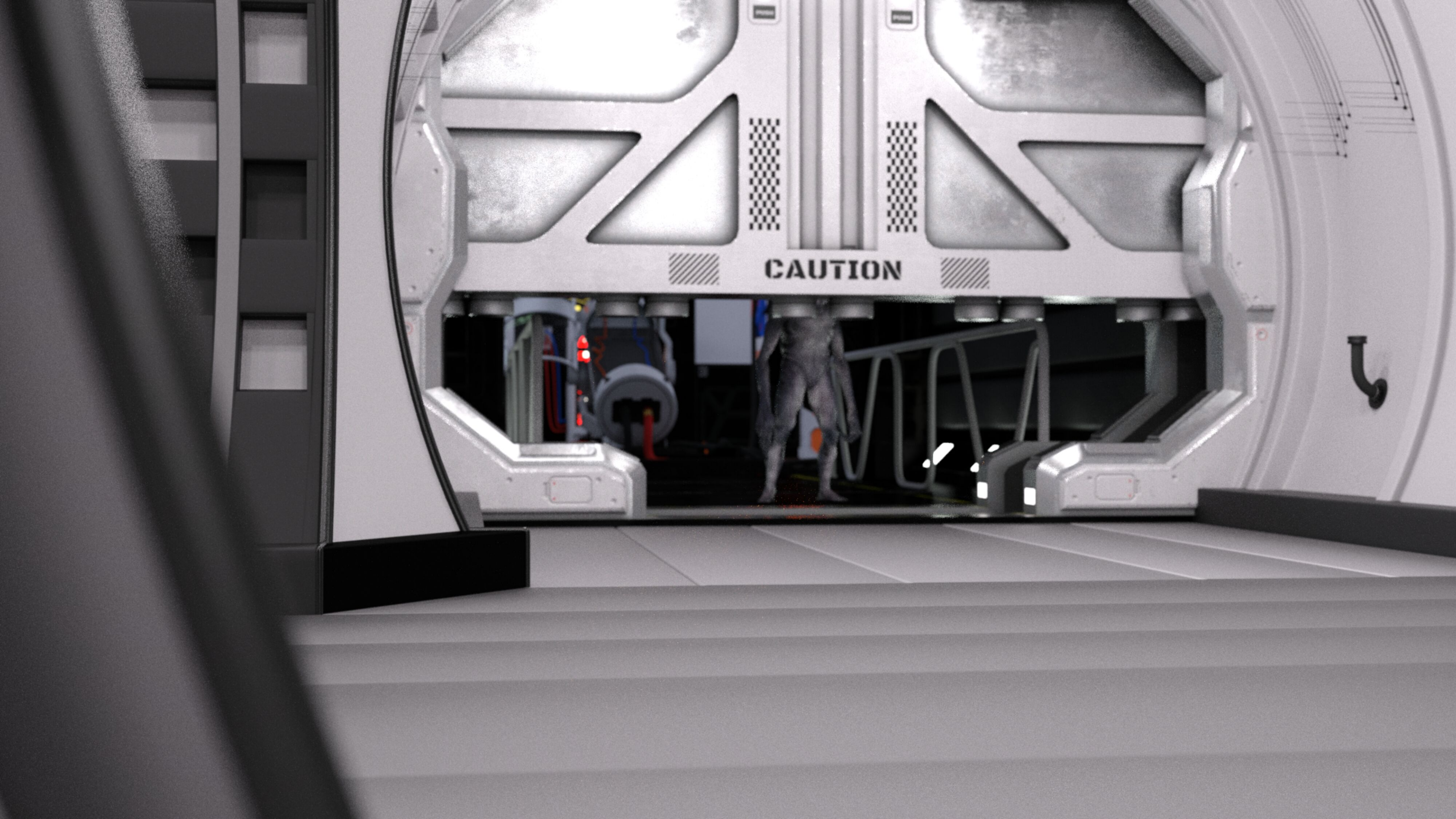


PLEASE, YOU
DON'T HAVE TO
REMIND ME.

A woman is shown from the waist down, wearing a brown fishnet bodysuit with a dark blue or black trim along the edges. She is standing in a futuristic, metallic corridor. In the background, there are large, octagonal windows or portholes that let in bright light. The floor is made of light-colored, rectangular tiles. A speech bubble is positioned near her, containing the text "I KNOW MY MISSION AND WHAT I NEED TO DO.".

I KNOW MY MISSION
AND WHAT I NEED TO
DO.





CAUTION



CAUTION

AND HERE WE ARE.
TRANSLINK STATION
WHERE YOU CAN BE
TRANSPORTED INTO ANY
PLACE IN THE
UNIVERSE.

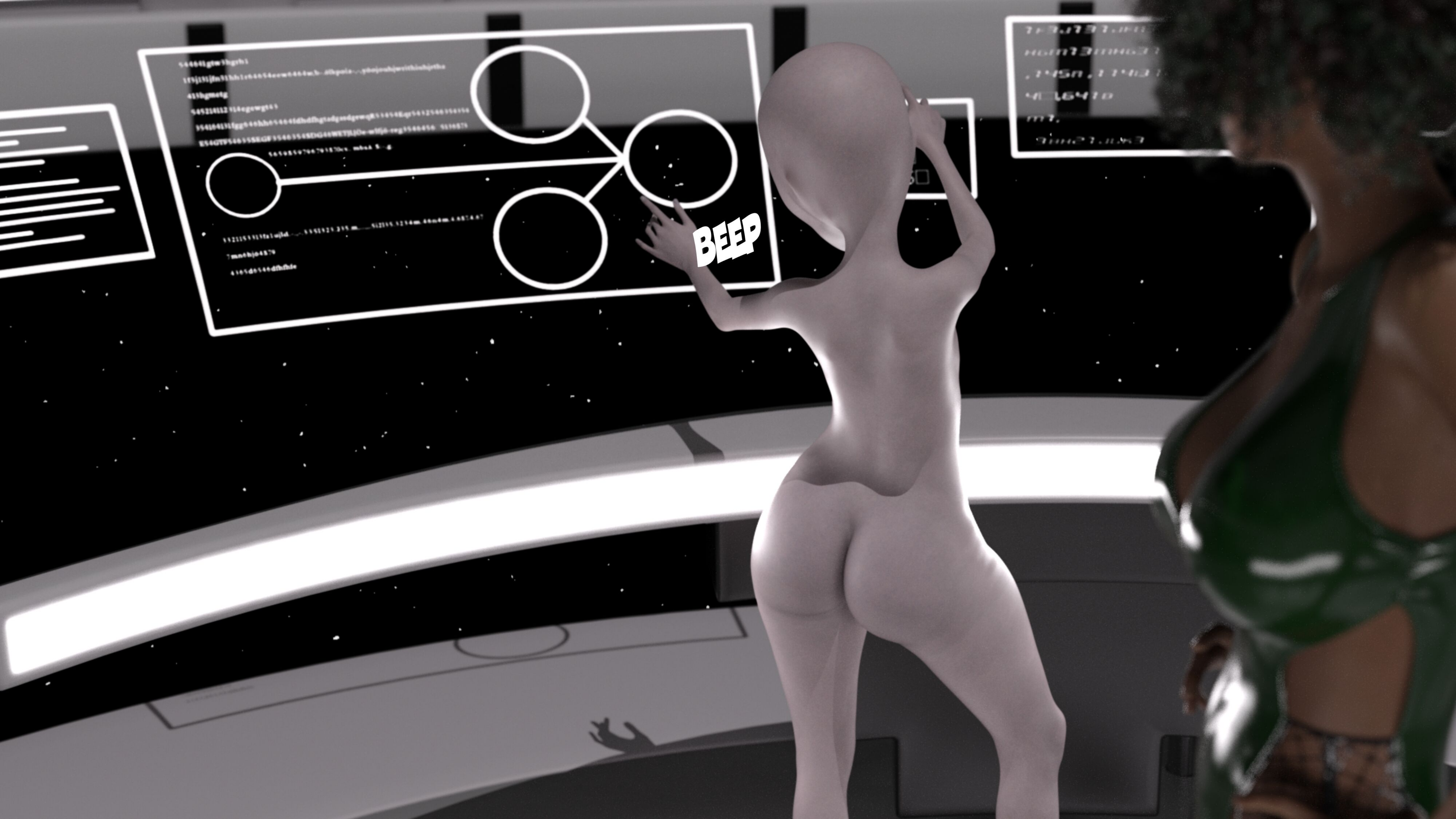


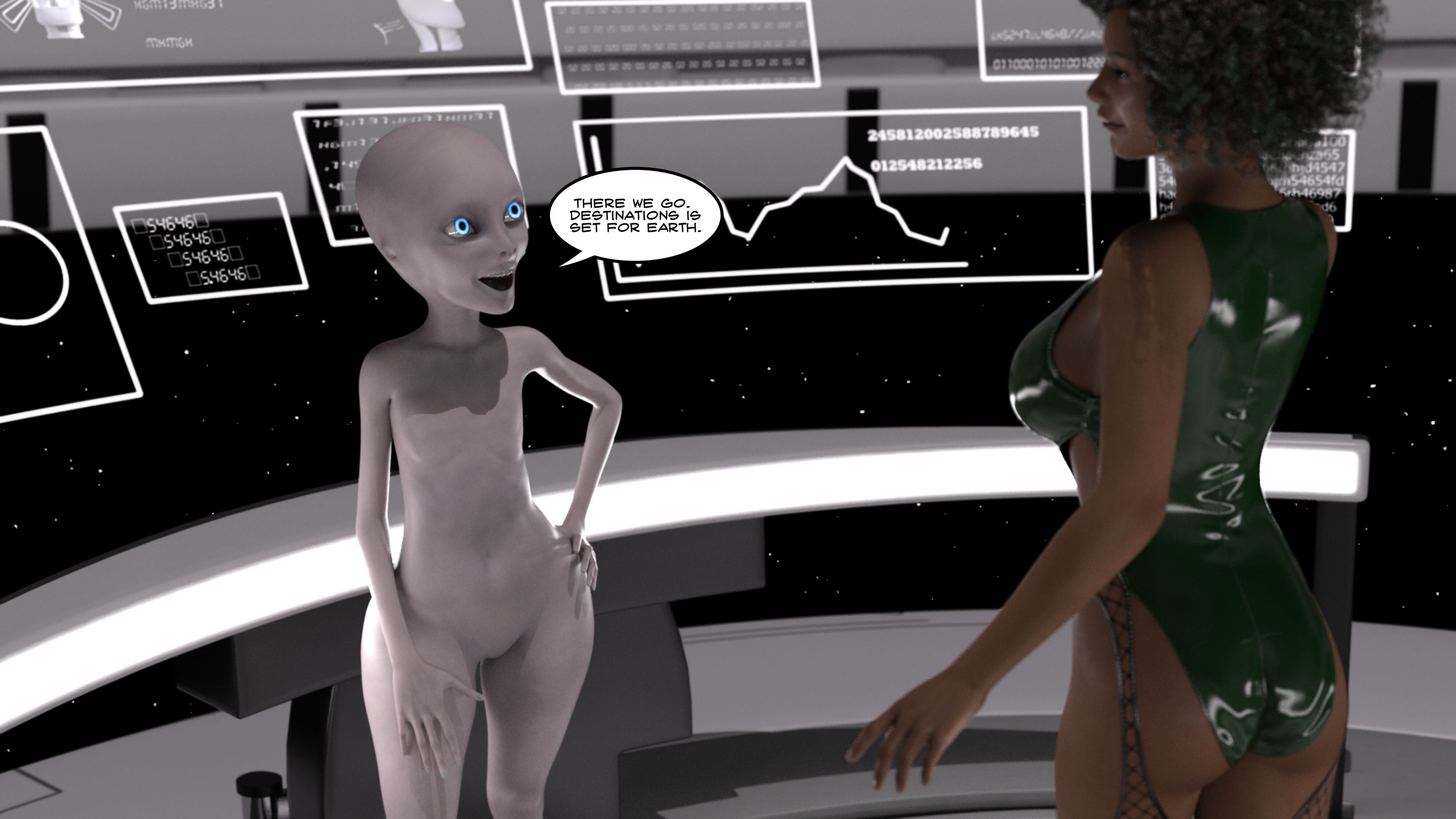


HEY, DOESN'T
THIS LOOK LIKE
THE OTHER ROOM
FROM THE FIRST
PHASE?



AN EXACT COPY, BUT THIS ROOM IS
FITTED FOR PHYSICAL TRANSPORTATION
WHILE THE OTHER ROOM IS USED FOR
NEURAL LINKS.





THERE WE GO.
DESTINATIONS IS
SET FOR EARTH.

54646
54646
54646
54646

245812002588789645
012548212256

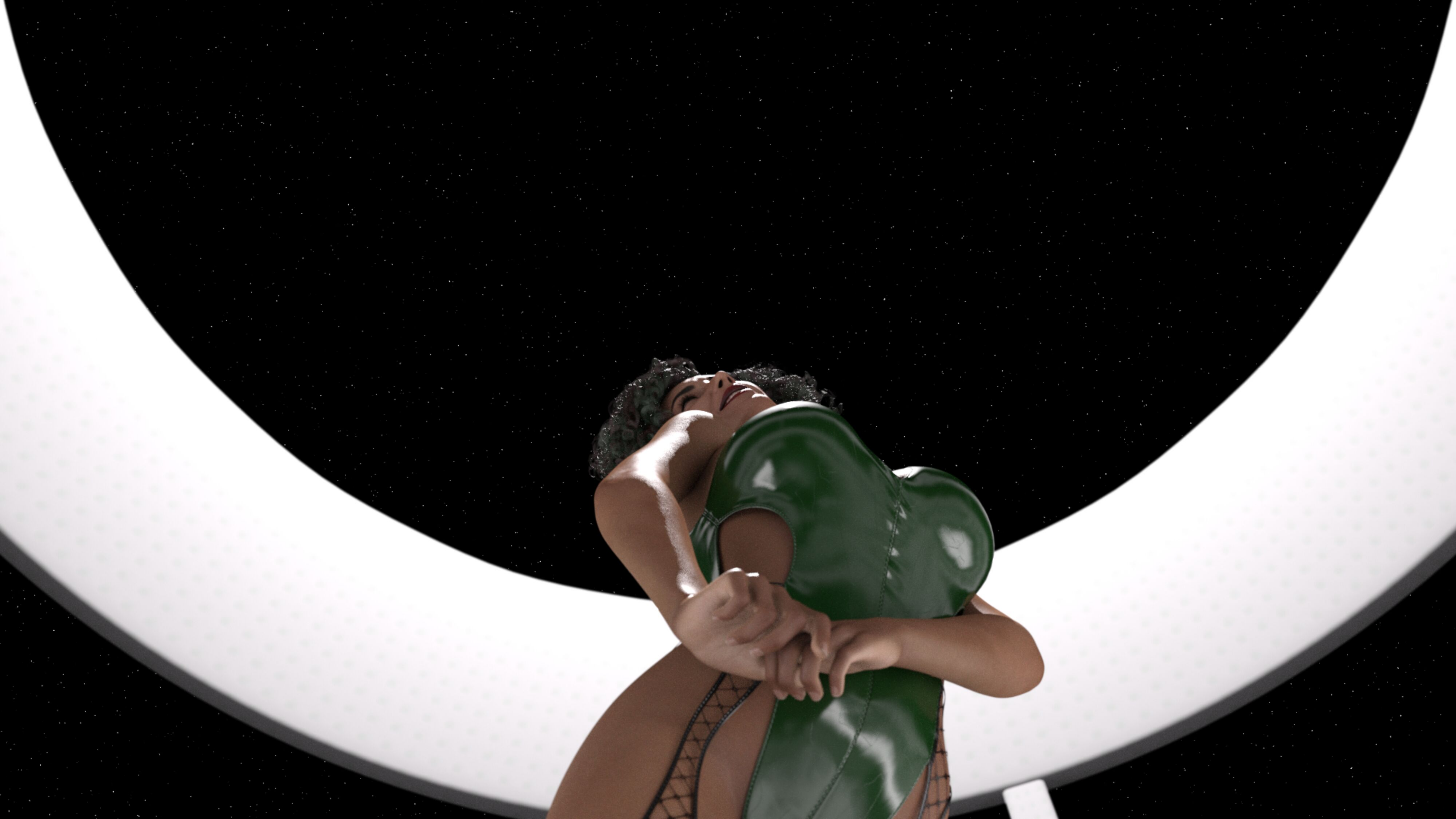
0110001010100122

100
2055
34547
54654fd
46987
d6



TIME TO
TEST THIS
BODY OUT.



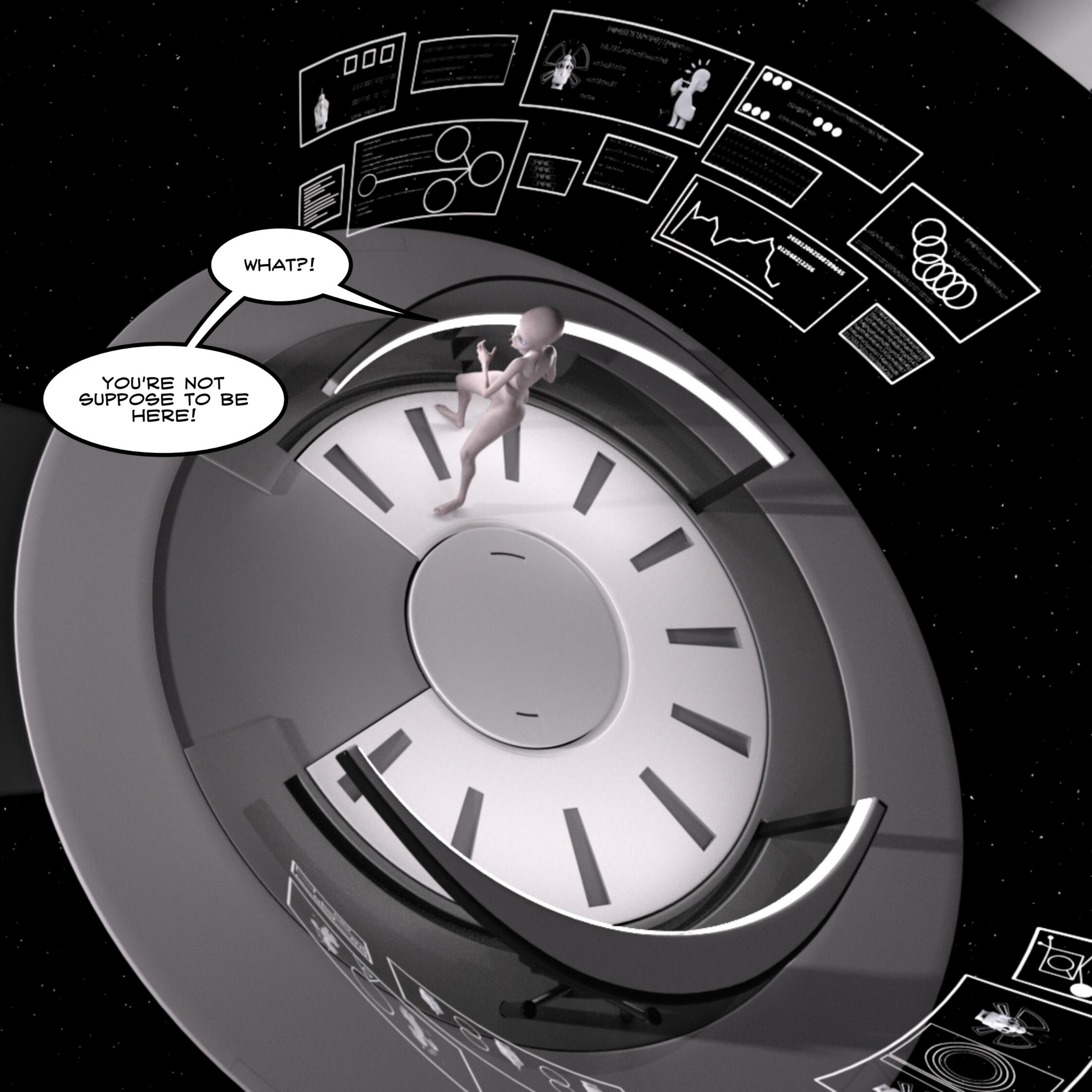


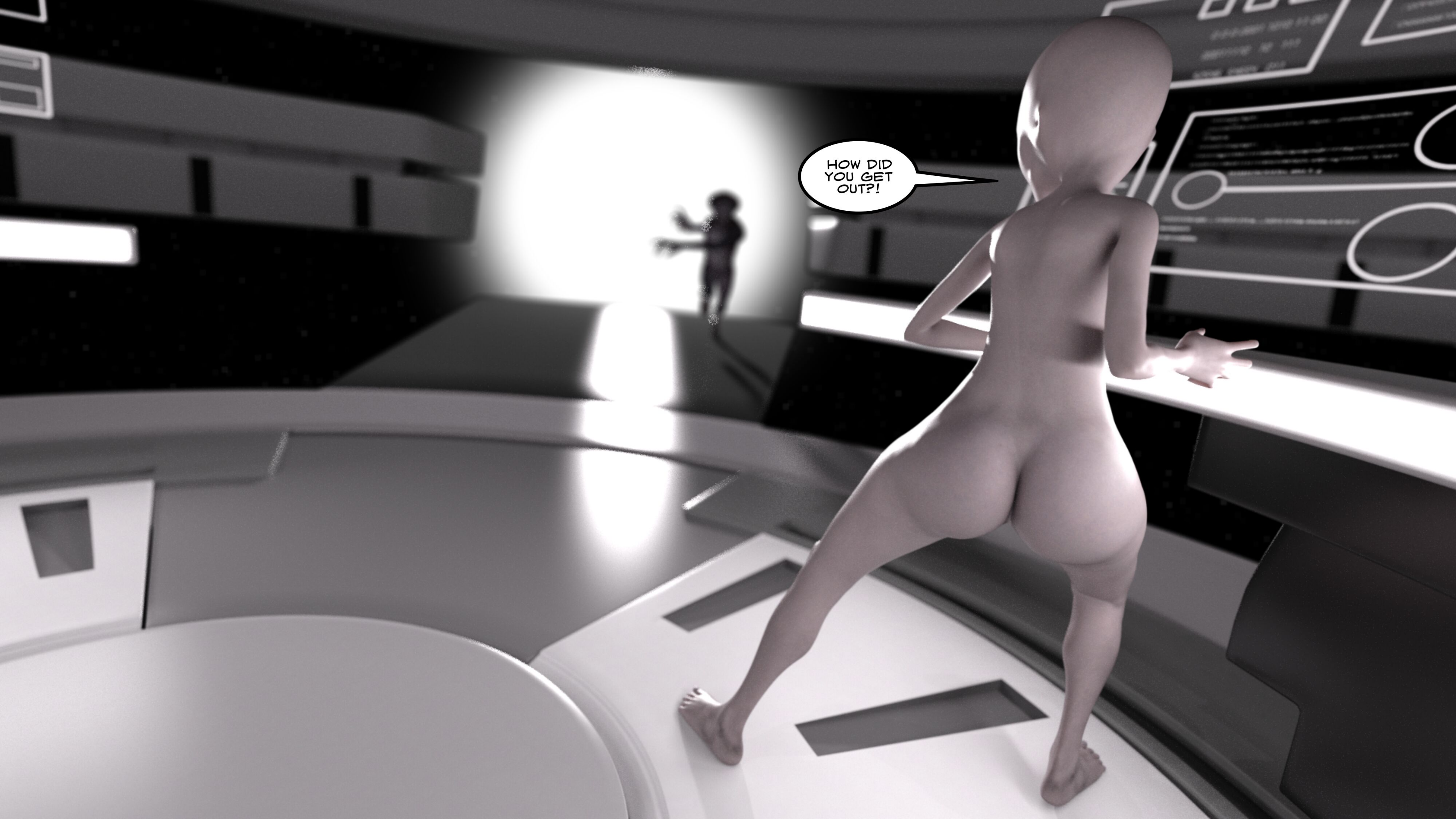


ARRGGHHH!!!
NOOOOOO!!!!

WHAT?!

YOU'RE NOT
SUPPOSE TO BE
HERE!





HOW DID
YOU GET
OUT?!





WHERE DID AYIEN
SEND ME TO?

A woman with dark curly hair and red lipstick is crouching on a grey floor. She is wearing a shiny green bodysuit and black fishnet stockings. Her legs are spread wide, and she is looking down at her feet. The background is a brick wall with graffiti. A speech bubble is above her head.

OHH WHAT'S
BETWEEN MY
LEGS?



THAT'S RIGHT.
HAPPINESS.





EXCUSE ME
MISS.



YOU'RE ON
PRIVATE
PROPERTY.

I'M GOING TO HAVE
TO ASK YOU TO VACATE
THE PREMISE.

A woman with voluminous, curly dark hair and light green eyes is shown from the chest up. She is wearing a bright green, sleeveless dress. Her right hand is raised, with her index finger pointing upwards near her chin. A white thought bubble with a black outline is positioned to her left, containing the text "A MAN! I HAVE SOMETHING I'LL LIKE TO EXPERIENCE FOR MYSELF." Three small white circles lead from the bubble to her head. The background is a blurred, outdoor setting with a path and some foliage.

A MAN! I HAVE SOMETHING
I'LL LIKE TO EXPERIENCE
FOR MYSELF.



HEY HANDSOME. YOU
LIKE WHAT YOU SEE?



MISS I'M NOT
PLAYING GAMES
HERE. YOU NEED TO
LEAVE THE AREA.



HOLD STILL
FOR A SECOND.

A woman with voluminous, curly dark hair with reddish-brown highlights is looking towards the camera with a slight smile. She is wearing a bright green, sleeveless, shiny dress. A hand is reaching out from the right side of the frame, palm facing forward, as if to stop her or gesture. The background is blurred, showing warm, bokeh lights.

I'LL READ YOUR
MIND AND SEE WHAT
YOU DO LIKE.

... ..

DON'T WORRY,
YOU'LL LEAVE THIS
PLACE A HAPPIER
EARTHLING.

I'M JUST DOING MY
JOB ON EARTH.

A close-up shot of a man wearing a yellow hard hat and an orange safety vest over a grey t-shirt. He has a distressed expression, with his right hand pressed against his forehead. The background is a blurred industrial or construction site. Two thought bubbles are overlaid on the left side of the image.

SHIT, I
CAN'T MOVE.

WHY AM I NOT
FREAKING OUT?









NOW DO YOU
LIKE WHAT YOU
SEE?



AHH!
WONDERFUL!



THIS'LL BE
FUN.





YES

YES

MOAN



FUCK ME
DEEPER!





A 3D rendered image of a construction worker, a Black man, wearing a yellow hard hat and an orange safety vest over a white t-shirt. He is looking at the back of a woman with large breasts, who is wearing a green top. The worker has a speech bubble above him that says "THESE ARE THE BIGGEST BOOBS I'VE DREAMED OF." and another speech bubble to his right that says "SHIT! I'M ABOUT TO...". The background is a blurred construction site with scaffolding and lights.

THESE ARE THE
BIGGEST BOOBS
I'VE DREAMED OF.

SHIT!
I'M ABOUT
TO...

CUMMM!!!

YES!





UHH FUCK! YES!

HOLY SHIT THAT WAS THE BEST I'VE FELT IN A LONG TIME





MY KNEES
ARE WEAK. IS
THIS WAS IT
FEELS LIKE?

THE PLEASURES OF A
FEMALE EARTHLING... A
WOMAN. IT'S EVEN BETTER
THAN THE SIMULATIONS!



GODDAM MISS.
THAT WAS THE
BEST SEX I HAD IN
A LONG TIME.

YOU'LL STILL
NEED TO VACATE
THE PREMISE
SINCE WE'LL BE
DOING WORK
HERE SOON.



OKAY, I'M GLAD I CAN
HELP GIVE YOU
SOMETHING.

I'LL LEAVE HERE SOON.



WHAT A
NICE MAN.

EARTHLINGS
ARE AMAZING.





TIME FOR A
CHANGE OF
CLOTHING.

A woman with voluminous curly hair, wearing a bright green short-sleeved crop top and black leggings, stands in a gritty, industrial environment. She has her arms outstretched to her sides. The background features brick walls, graffiti, and a window with a grid pattern. A speech bubble is positioned to her left.

SOMETHING A
LITTLE CASUAL FOR
A WALK AMONG
HUMANS.




WHERE SHOULD
I GO TO.

A woman with voluminous curly hair, wearing a bright green short-sleeved top, stands with her arms raised behind her head. She is looking directly at the viewer with a neutral expression. The background is a blurred city street at night, with warm streetlights and a pink neon sign visible on the left. A speech bubble is positioned to her left.

MORE IMPORTANTLY,
WHAT SHOULD I DO
NEXT?

WHATEVER WALKS IN
MY PATH THEN. I
GUESS I'LL LEAVE IT
TO CHANCE.



A woman with voluminous curly hair, light green eyes, and red lipstick is shown from the chest up. She is wearing a bright green, short-sleeved, ribbed top. Her right hand is raised near her face, with fingers slightly spread. She is looking towards the viewer with a slight smile. The background consists of a brick wall on the left and a dark, textured wall on the right. A speech bubble is positioned to her left.

HEH, HUMANS
HAVE AMUSING
DEPICTIONS OF
ALIENS.



RAGGHHH!!!

WHERE DID YOU
SEND HIM TO?

I'M NOT
TELLING YOU!




I'LL FIND OUT MYSELF.

FINE, YOU LEAVE ME NO CHOICE!



POKE



CAN YOU FEEL IT? I STILL HAVE
MY ABILITIES, THE ABILITIES THAT
YOU STOLE FROM ME AND MY
PEOPLE.

YOU PRIDE IN YOUR KIND AND ALL
YOUR ACHIEVEMENTS, BUT AT THE
COST OF OTHERS.



NOW FEEL
WHAT IT'S LIKE
TO LOSE...

...LOSE YOUR SENSES AND
FADE INTO THE COSMOS AS
IF YOU WERE NOTHING.



YOU CAN'T DO
THIS...

NOOO

EVERYTHING
YOU ARE IS
NOW MINE.





YOU'RE NEXT!

TO BE CONTINUED...