

IN HER

SHOES

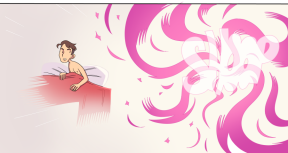
A stylized illustration of a woman's legs from the waist down. She is wearing black, thigh-high stockings and black high-heeled shoes. The legs are positioned in a dynamic, slightly bent pose. The background is a solid dark blue-grey color. The word 'SHOES' is written in large, bold, black, sans-serif capital letters, with a white outline, partially overlapping the woman's legs and the background.

LUST IN
THE SAUCE

BY GRUMPY-TO







SOME TIME LATER...



JEFF HAS NOT DONNED ANY SHOES THAT DO NOT BELONG TO HIM SINCE LUCY'S DEPARTURE.



AND EVERY TIME I SEE HER, I CAN'T STOP MYSELF FROM TALKING ABOUT THAT TIME I TURNED INTO ALUM AND HER GIRLFRIEND.



GGG, THAT WAS HOT.



AS LONG AS I PUT MY OWN SHOE BACK ON BEFORE SOMETHING AROUND ME DAMAGES...

IT SHOULD BE DEAD... RIGHT?



RIGHT...?







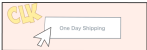














WHY I JUST Gotta TELL MY PROFESSORS...

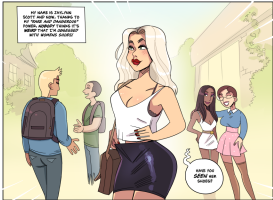














WELL, WOULD YOU
LOOK AT THAT.
SOMETIMES THINGS
DO WORK OUT FOR
THE BEST!

THE END

THANKS SO MUCH FOR READING!
IF YOU ENJOYED THIS SERIES, YOU CAN
CHECK OUT MY OTHER COMICS AT
WWW.GRUMPYTG.COM
OR FLEDGE TO MY PATREON AT
WWW.PATREON.COM/GRUMPYTG

FIND ME ON TWITTER
@THEGRUMPYTG

**YOUR SUPPORT MAKES
WORKS LIKE THIS POSSIBLE!**

