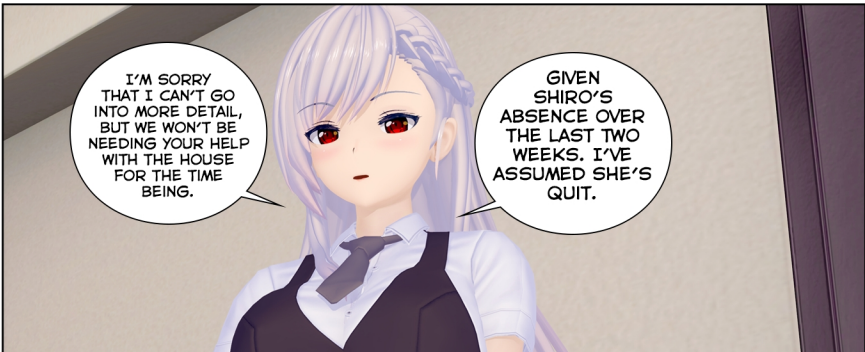


1 MONTH LATER...



WHAT'S GOING ON...? WHY WAS I MOVED BACK HERE... AND WHERE'S SHIRO?



I'M SORRY THAT I CAN'T GO INTO MORE DETAIL, BUT WE WON'T BE NEEDING YOUR HELP WITH THE HOUSE FOR THE TIME BEING.

GIVEN SHIRO'S ABSENCE OVER THE LAST TWO WEEKS, I'VE ASSUMED SHE'S QUIT.



SHIRO QUIT...? THERE'S NO WAY! SHE WOULDN'T JUST LEAVE ME...



LISTEN CLOSELY, RYU. YOUR DAILY LIFE IS GOING TO LOOK QUITE DIFFERENT FROM NOW ON.



YOUR DAYS AS A MAID ARE OVER. FROM THIS MOMENT ON, YOU WILL HOLD THE RANK OF A LADY, AND I EXPECT YOUR BEHAVIOR TO REFLECT THAT TRANSITION PERFECTLY. THERE WILL BE NO MORE LAPSES IN ETIQUETTE.

YOU WILL ADHERE TO A RIGOROUS NEW DIET AND EXERCISE SCHEDULE, AND ALCOHOL IS ENTIRELY OFF-LIMITS. I EXPECT NOTHING LESS THAN PEAK PHYSICAL CONDITION FROM YOU AT ALL TIMES.



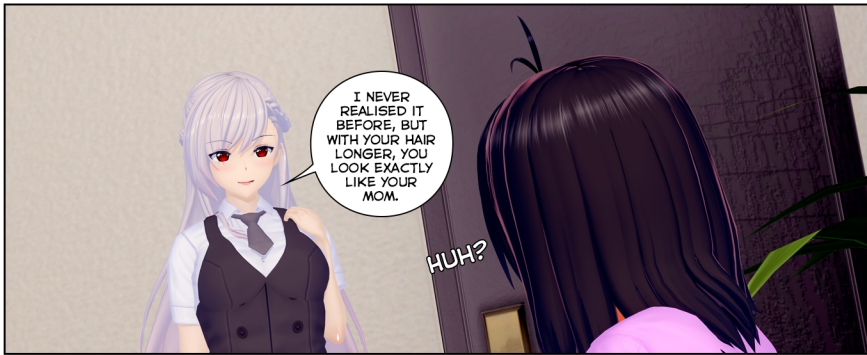
YOUR TRAINING WILL MOVE AWAY FROM LABOR AND TOWARD FLEXIBILITY WE MUST ENSURE YOUR HIPS AND CORE ARE SUPPLE ENOUGH TO CARRY THE WEIGHT OF... AHEM.

YOUR NEW RESPONSIBILITIES WITHOUT STRAIN.

THAT WAS CLOSE... I NEARLY TOLD HER. YUNA IS INSISTENT ON WAITING UNTIL THE WEDDING DAY TO REVEAL THE TRUTH.



WAIT... WHY IS SHE BEING SO... NICE? DOESN'T SHE HATE ME?



I NEVER REALISED IT BEFORE, BUT WITH YOUR HAIR LONGER, YOU LOOK EXACTLY LIKE YOUR MOM.

HUH?



IS THAT SO... I'VE NEVER SEEN WHAT SHE LOOKED LIKE



AH... THAT'S RIGHT. YOUR FATHER MADE SURE TO ERASE EVERY TRACE OF HER AFTER SHE PASSED. IT MAKES SENSE YOU WOULDN'T KNOW.

IF THERE'S A PHOTO, IT'S BEHIND THE GATES OF THE MITSURUGI GROUP. BUT AFTER THE WAY YOUR FATHER TREATED HER, THEY'VE TREATED THIS ENTIRE HOUSE LIKE A PLAGUE.



WAIT... YOU'RE SAYING MY MOTHER WAS A MITSURUGI? FROM OUR MAIN COMPETITORS?

INDEED. DID YOU NOT KNOW?



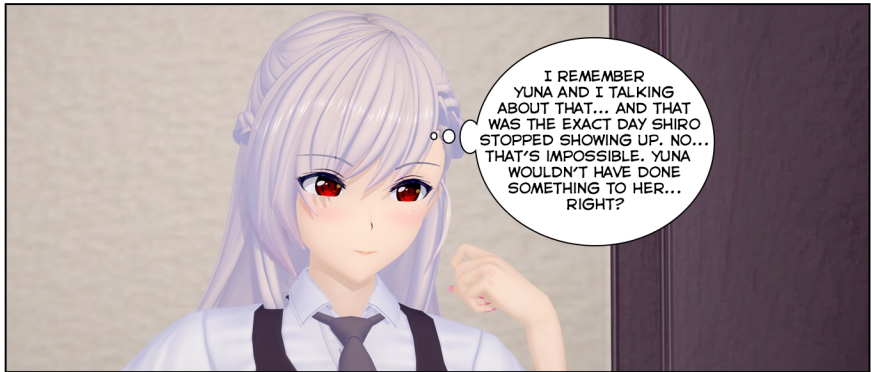
IF MY MOTHER WAS A MITSURUGI... THEN I HAVE THEIR BLOOD IN MY VEINS. I'D BE A POTENTIAL HEIR... WOULDN'T I? WOULD THEY HELP ME IF I REACHED OUT? OR DO THEY EVEN KNOW I EXIST?



UNCLE SAYS HE'S HELPING, BUT THE THINGS HE MAKES ME DO... I CAN'T TAKE IT ANYMORE. IF I COULD JUST GET A MESSAGE TO THEM... MAYBE THEY'RE MY ONLY WAY OUT.



WAIT... SHIRO.
DIDN'T SHE USED
TO WORK FOR THE
MITSURUGI GROUP?



I REMEMBER
YUNA AND I TALKING
ABOUT THAT... AND THAT
WAS THE EXACT DAY SHIRO
STOPPED SHOWING UP. NO...
THAT'S IMPOSSIBLE. YUNA
WOULDN'T HAVE DONE
SOMETHING TO HER...
RIGHT?



WAIT, NO... WHAT'S
WRONG WITH ME? I'M
LETTING MY IMAGINATION
RUN WILD. SHIRO
PROBABLY JUST...
MOVED ON.

Right..



HUFF!
HUFF!

CARDIO
A mother must have the
stamina to endure
what is coming.



HUFF!
HUFF!
BOING!
BOING!

THEY'RE
BOUNCING SO
MUCH... EVEN
WITH A SPORTS
BRA...



UGH!
W-WHAT IS
THIS EVEN
FOR...

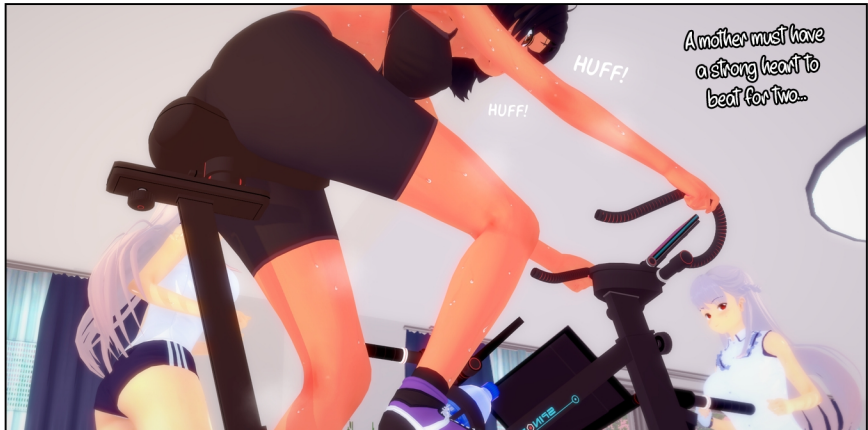
Pelvic & Lower Body
A mother's foundation...
built to carry more than
one life.



HNF!

CHEST

A mother must have the strength to carry the heavy, swollen burden of her bossom



HUFF!

HUFF!

A mother must have a strong heart to beat for two..



HUFF!
HUFF!

THAT'S IT
KEEP IT UP.



A mother must clench like she's got something worth keeping in.

WHY DOES IT HURT SO MUCH.... DOWN THERE...

HUFF!



A mother.. Ryu must have an ass worth ravaging... One grown by herself.

HUFF!



Ryu must arch her back For MY pleasure.

UGH! STUPID BREASTS! C-CANT BREATHE!

BOING!



IT HURTS!
I-I CAN'T
DO IT!

HNGH!

OH DON'T BE
A BABY... WERE
ALMOST
THERE...



Ryu must stretch every limit
of that SLUTTY body
For I will
devour it.

HNGH!
AGH!



1 MONTH LATER...

I'VE NEVER
HAD A GIRL AS
BIG AS YOU HERE.
THESE GIRLS
MUST RUIN YOUR
BACK HAHA...

THEY DID AT
FIRST... B-BUT
THEY STILL
GET IN THE
WAY...

ALRIGHT,
YOUR TEST
RESULTS ARE
PERFECT. YOU
CAN BEGIN
TRYING WHEN EVER
YOU WANT.

