



**My** OBEDIENT  
**TOY GIRL**  
**KARMA** SPIN OFF  
PART 2



\*HEAVY BREATH\*

CLICK

CLICK

THIS MAKES YOU  
LOOK LIKE MY PET

AM I SENSEI'S  
PET ?



NOW DO WHAT  
YOU NEED TO DO

HMM ?

SERVE THEIR OWNERS

?!

S-SENSEI'S  
COCK

SHOULD I  
SLUCK ON IT?

GOOD, IT SEEMS  
LIKE YOU GET IT

HAHH

HAHH

HOLD ON  
A SECOND



EH WHY ?

COME HERE, AND  
WALK LIKE A DOG



COME HERE,  
MY LOVELY PET

HAHH

HAHH

\*PATTING\*



D-DICK

I WANT IT



GREAT,  
COME CLOSER!

DICK





SMART DOG

\*SQUEEZE\*

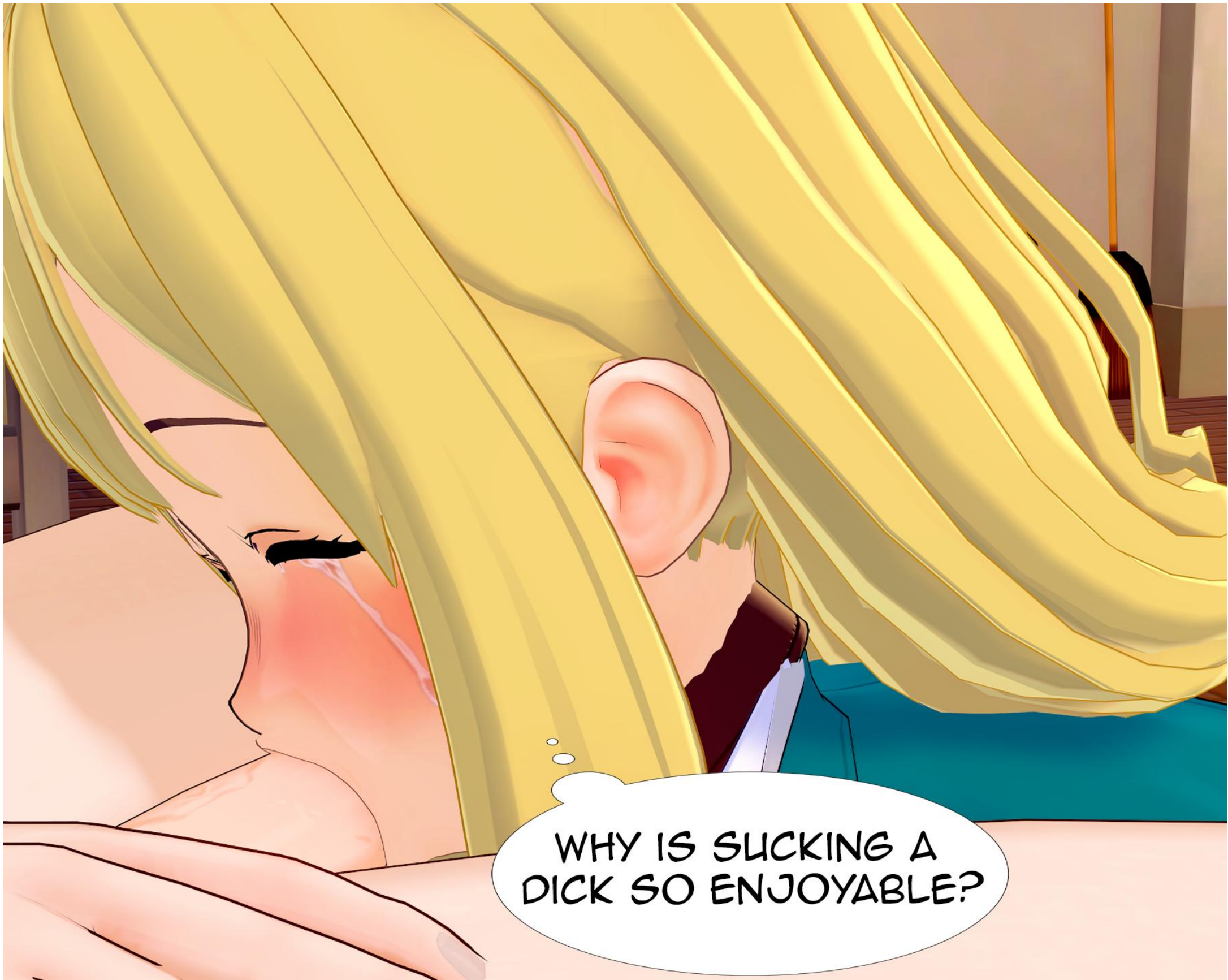


DO IT SLOWLY

HAAH



IT FEELS WEIRD



WHY IS SUCKING A  
DICK SO ENJOYABLE?



I CANT STOP

ITS SO EXCITED



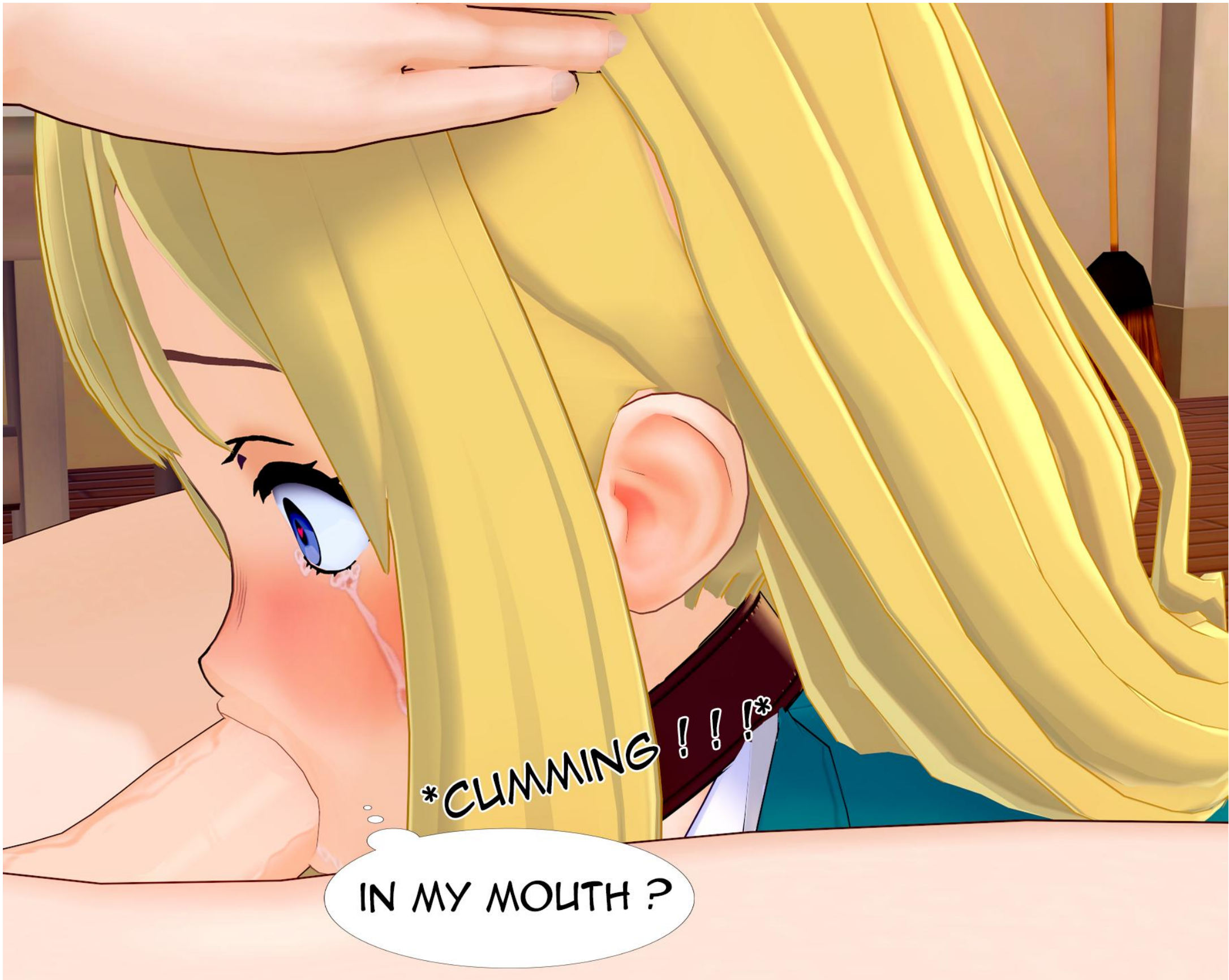
I THINK I'M  
GOING TO CUM

SHOULD I  
STOP IT?



HEY, WHAT  
ARE YOU DOING?

I WILL USE  
YOUR MOUTH



\*CLIMMING !!!\*

IN MY MOUTH ?



HAH IM FEEL  
GOOD



HOLD ON,  
NOT YET

NOW, SWALLOW  
IT ALL





BLURP



GOOD JOB,  
MY PET

DO YOU  
WANT MORE?

AGAIN AND AGAIN,  
DO IT AGAIN

HAH

HAH

PLEASE DO  
IT AGAIN

I DONT HAVE IDEA,  
BUT I THINK YOU  
WANT TO

\*BELL  
RINGGING\*

THEN...

MORE I OBEY HIM,  
MORE I EXCITED IT



I HAVE TO GO  
BACK TO CLASS



YOU DON'T NEED  
TO RETURN TO CLASS

STAY AND CONTINUE  
YOUR LESSONS HERE

UHH SENSEI ?



WE WILL CONTINUE AFTER  
SCHOOL IS OVER

MMH ?





I THINK LATER I'LL MAKE  
HIM WALK IN THE PARK



THEN NERU-SENSEI  
LEFT ME

10 MINUTES LATER . . .

NERU SENSEI?  
ARE YOU THERE?



A woman with long, dark hair styled in a braid, wearing a dark blue school uniform with red and white striped cuffs, stands with her back to the camera. She is looking out a large window in a classroom. The room contains a desk with a chair, a bookshelf filled with books, a green chalkboard, and a vertical calligraphy scroll on the wall. A speech bubble above her head contains the text "HAS HE ALREADY GONE TO CLASS?".

HAS HE ALREADY  
GONE TO CLASS?

IN THAT CASE, I'LL PUT  
THE REPORT HERE





HUH ?

DID I STEP ON  
SOMETHING?



WHAT IS  
THIS?

A woman with long dark hair, wearing a dark blue suit and red high-heeled shoes, is looking down at a spill on a desk. The spill is a dark liquid, likely coffee, with a red stain. A clipboard with a document is on the desk. The scene is set in an office environment.

SPILLED  
COFFEE?

BUT IT SMELLS  
STRANGE



HUUH ?

\*KNOCK\*



SOMETHING  
HAPPENS

WHAT WAS  
THAT?



IS ANYONE  
THERE?



I FEEL SOMETHING  
INSIDE THIS LOCKER



\*SQUEAK\*



HMM ?

A cartoon illustration of a small grey mouse with pink ears and a tail, standing on a wooden floor. The mouse is positioned between two speech bubbles, each containing the word "SQUEAK". The background shows a wooden floor with a dark purple shadow cast by a large object, and a person's leg in a blue dress and brown patterned tights is visible on the right side.

SQUEAK

SQUEAK



HI-HIYAA!



DAMN, IT'S  
JUST A RAT

IT SCARES  
ME

A person with long, dark, straight hair is shown from the back, looking towards a classroom. The person is wearing a light purple shirt. In the background, there is a green chalkboard with some faint writing and a red arrow. A desk with a laptop and a smartphone is visible. The scene is lit with warm, orange light.

DID I FORGET TO  
BRING MY NOTES?

I THINK I BROUGHT  
IT EARLIER



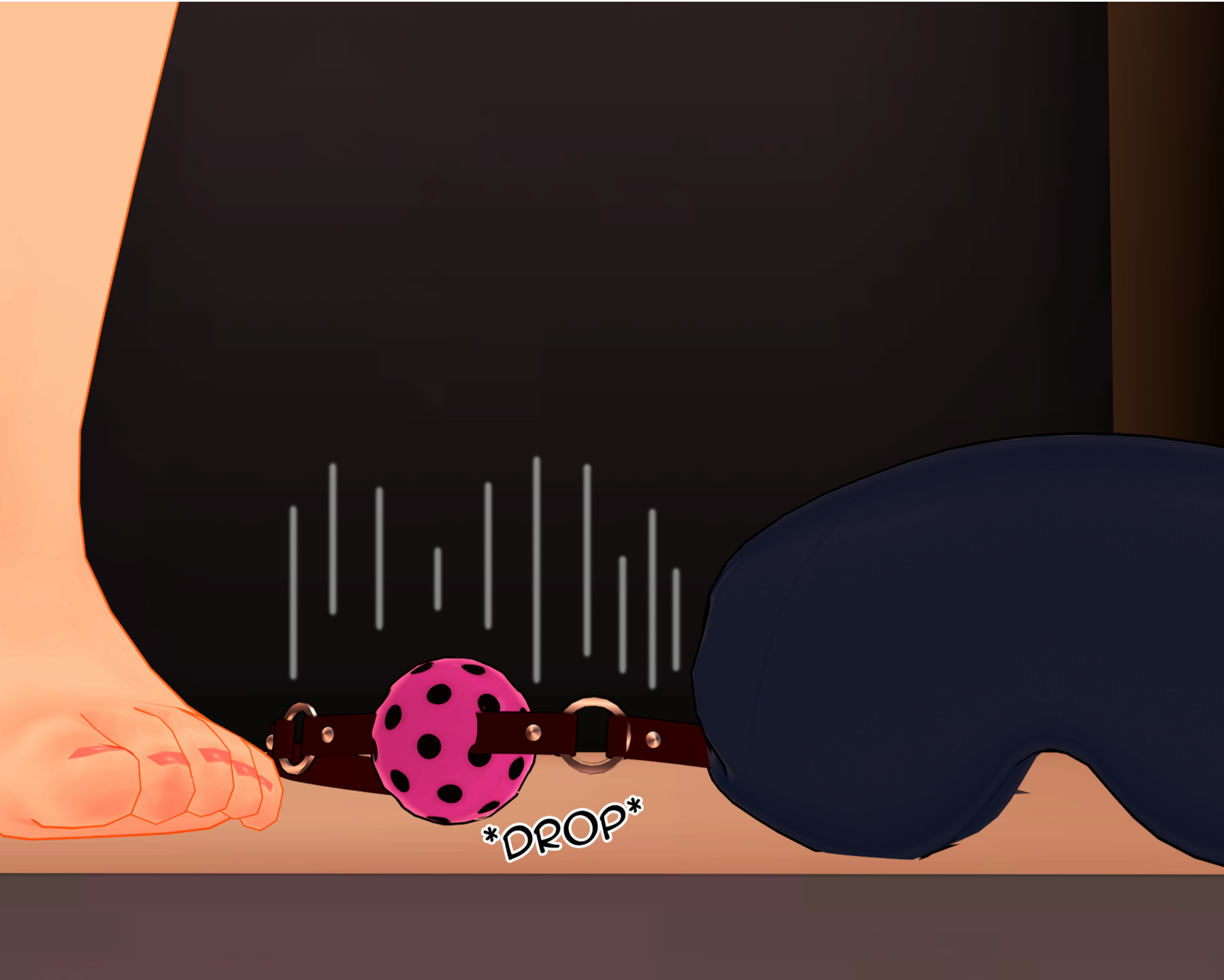
ARE YOU HAVING  
A GOOD TIME?

MY GIRL YUKI

HHMP !?



WAIT A MINUTE,  
I'LL TAKE IT OFF



\*DROP\*

YUKI ?

UHM...

A manga-style illustration showing a close-up of two characters. On the left, a dark-haired boy is shown in profile, looking towards the right. On the right, a blonde girl with blue eyes is crying, with tears streaming down her face. She has a pleading expression. The background is dark and indistinct.

PLEASE GIVE ME  
ORDERS, SENSEI

YOU'RE VERY ENERGETIC  
TODAY, YUKI

IF THAT IS  
YOUR WISH





S-SENSEI ?

WHAT ARE YOU DOING, YULUKI?



COME HERE,  
MY PUPPIES

PAT--PAT



WOOF

WOOF





YOU DON'T SEEM  
TO LIKE IT

DO YOU WANT TO  
DO SOMETHING?

OH, YOU  
WANT TO?

THEN TRY BEGGING  
FOR IT

!?



NERU SENSEI ...



D-DICK

I WANT YOUR  
DICK SO BADLY



YOU REALLY WANT IT ?

AS FAR AS THAT GOES

MY BUTT FEELS EMPTY WITHOUT YOUR DICK



I WON'T STOP  
UNTIL I'M SATISFIED

YES, PLEASE DO  
WHATEVER YOU WANT

TELL ME, HOW DO YOU FEEL NOW?

IT HURTS, BUT  
KEEP GOING

AHH ITS  
SO GOOD

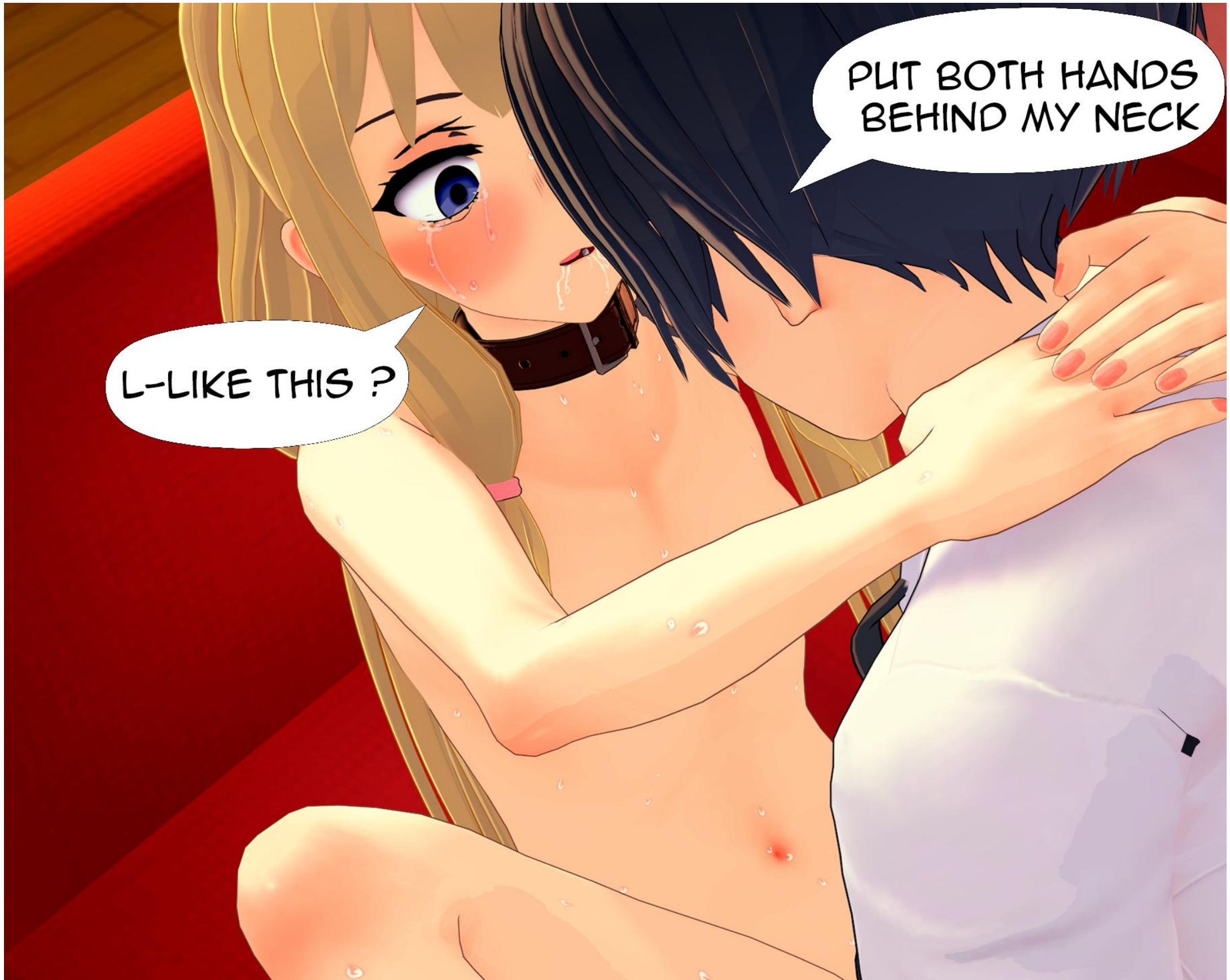
DO IT, DO IT  
HARDER

FINALLY YOU ARE  
HONEST WITH  
YOURSELF



WHY DID YOU  
STOP, SENSEI?

WHO SAID  
THAT?



PUT BOTH HANDS  
BEHIND MY NECK

L-LIKE THIS ?



EHH ?

DO IT STRONGLY OR  
YOU WILL FALL

W-WHY DID YOU  
CARRY ME SUDDENLY





PLEASE PUT ME DOWN,  
I FEEL LIKE I'M FALLING

HMM YOU  
BECAME  
SO HESITANT

UHHH  
...

KISS ME

WHY ARE YOU ASKING  
ME THAT NOW?

DO IT QUICKLY OR  
I'LL DROP YOU RIGHT NOW

THEN...

NGHH  
♥





NGHH  
♥

LET'S CHANGE  
POSITIONS



AN HOUR LATER . . .



THOSE ARE MY NOTES  
THAT I FORGOT TO BRING

HOLD ON, THIS  
ISN'T MY NOTE



SO, DID SOMEONE  
COME IN EARLIER?



HAAA

HAA

TSK..HE DIDN'T SAY ANYTHING AT ALL



AFTER BEING AT HOME . . .



EARLIER, I WAS VERY  
EXCITED WITH SENSEI

BUT AFTER DOING THAT,  
I FELT LONELY AT HOME



I ALMOST FORGOT,  
I HAVE TO TAKE THAT



I THINK I PUT IT  
IN THIS BAG

I FOUND IT

I SHOULD HAVE  
BEEN SUSPICIOUS

I DON'T KNOW  
WHAT THIS IS FOR ?

BUT I'VE BEEN  
DRINKING IT FOR THE  
PAST THREE MONTHS



ARE THESE  
JUST VITAMINS?







BECAUSE I WAS NAIVE,  
I DID IT



I WONDER WHY HE  
TOLD ME TO DO THIS

IT WON'T BE LONG  
BEFORE IT HAPPENS

3 MONTHS LATER . . .

WHAT THE HELL  
IS THIS?

I SHOULDN'T  
HAVE THIS



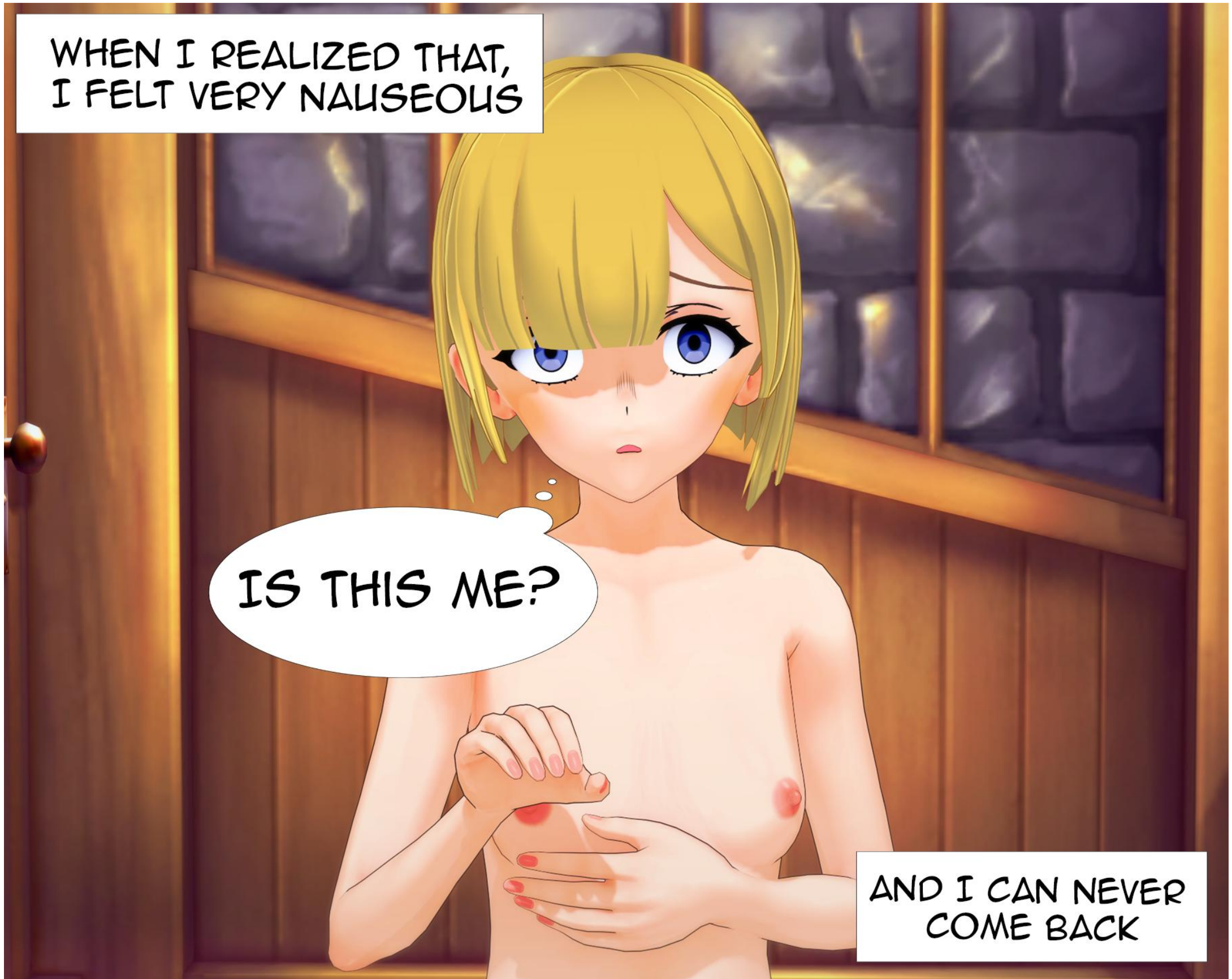
A woman with blonde hair, wearing a white dress, is shown from the chest up. She is looking out a window with a yellow curtain. Her hands are clasped in front of her chest. A thought bubble above her head contains the text "THIS IS UNFAIR". The window shows a view of a building with a blue and white patterned facade.

**THIS IS  
UNFAIR**

WHEN I REALIZED THAT,  
I FELT VERY NAUSEOUS

IS THIS ME?

AND I CAN NEVER  
COME BACK



A man in a white long-sleeved shirt and a dark tie is shown from the chest down. He is standing in front of a door with a vertical handle. His right hand is on the handle, and he appears to be sliding it. The background is a plain wall.

**\*SLIDE\***

**THE NEXT DAY . . .**







NERU SENSEI ?



WAIT A MOMENT,  
NERU SENSEI

HMM ?

注意  
施錠  
消灯



HAVE YOU FINISHED  
MY REPORT  
FROM THREE  
MONTHS AGO?

施錠  
消灯



DID YOU LEAVE  
YOUR REPORT IN MY  
CLUB ROOM?

YES, THAT'S RIGHT

I HAD ALREADY  
FINISHED IT LAST MONTH

BUT I JUST FOUND  
OUT THAT IT WAS YOU

YES, SORRY,  
I FORGOT  
TO TELL YOU

THAT'S OKAY,  
NEXT TIME PLEASE  
LET ME KNOW FIRST

ALRIGHT, I'LL GET BACK  
TO MY WORK NOW

O-O-KAY



I FEEL LIKE I'M BEING INTERROGATED

IS NERU SENSEI HAVING A PROBLEM?



THERE DOESN'T  
SEEM TO BE A  
PROBLEM FOR NOW



RING



DID SOMEONE SEND  
ME A MESSAGE?

RING

RING

I THINK  
HE SHOULD TRY IT



YULKI DURING CLASS TIME





IS HE OKAY?

DOES HE LOOK  
LIKE HE'S IN PAIN?



BUT HIS RED  
CHEEKS LOOKED  
CLITE

HE REMINDED ME  
OF SOMEONE

BUT I FORGOT



WHY ARE MY BREASTS  
SO SENSITIVE TODAY?

HAA

HAA





\*SLIDE\*



SENSEI...





WHAT'S GOING ON?

I'M A  
LITTLE WORRIED  
WITH MY BODY



WELL, I'VE BEEN  
LOOKING FORWARD TO IT

HUUH ?



SENSEI ?

DON'T TELL ME YOU  
PLANNED ALL THIS?



IS IT HOT TODAY?

Y-YES



LET ME SEE

SENSEI ?



COULD IT BE THAT  
HE ALREADY KNOWS?



FINALLY, IT HAS  
GROWN UP

D-DID YOU PLAN THIS  
FROM THE BEGINNING?

DO YOU  
HATE THAT?

AHH, THIS IS REAL

SENSEI, STOP IT THIS IS EMBARRASSING



N-NO!

WHAT IF I  
TOUCH THIS?



WHAT IF I TOUCH THIS?

N-NO!



IT TICKLES  
WHEN SOMEONE  
TOUCHES IT



IT SEEMS LIKE  
YOU'RE ENJOYING  
WHEN I TOUCH IT

CERTAINLY NOT



HOW ABOUT THIS

W-WHAT...



S-STOP!!!

DOES DOING THIS  
MAKE YOU EXCITED ?



PLEASE STOP

YES, I'M EXCITED  
IF YOU KEEP DOING IT

BUT PLEASE STOP,  
I CAN'T TAKE  
IT ANYMORE



НАНА, ОКАУ-ОКАУ

ЦИИИ



YUKI, TODAY I WANT  
YOU TO DO SOMETHING



AFTER SCHOOL,  
WEAR THIS

A-AFTER  
SCHOOL ?

YES, FROM HERE  
THEN GO TO  
THE MARKED LOCATION



AND AFTER  
ARRIVING

CHANGE CLOTHES  
INSIDE THAT BAG

WHAT IS  
HE PLANNING?

A close-up illustration of a character with dark hair, wearing a teal uniform with a grey collar and a red stripe on the shoulder. The character is shown in profile, with their hand resting on their chin in a thoughtful pose. The background is a soft-focus outdoor scene with green grass, yellow flowers, and trees under a warm, hazy sky. A white speech bubble is positioned in the lower-left quadrant of the image.

I'M CURIOUS  
ABOUT YUKI EARLIER

A young man with short brown hair is shown from the chest up. He is wearing a teal suit jacket over a light purple collared shirt and a red necktie. He has his right hand raised to his mouth, with his index finger pointing upwards, as if he is about to say something or is in a state of surprise. He is also holding a blue bag with a grey strap over his shoulder with his left hand. The background is a paved ground with some scattered pink petals. A speech bubble is positioned in front of him, containing the text "AHH, I CAN'T STOP THINKING ABOUT IT".

AHH, I CAN'T STOP  
THINKING ABOUT IT



HEY  
MIO!!!



HERE, MIO

NOA ?



I'M COMING



EHH...



HEHH ?

MIO ?

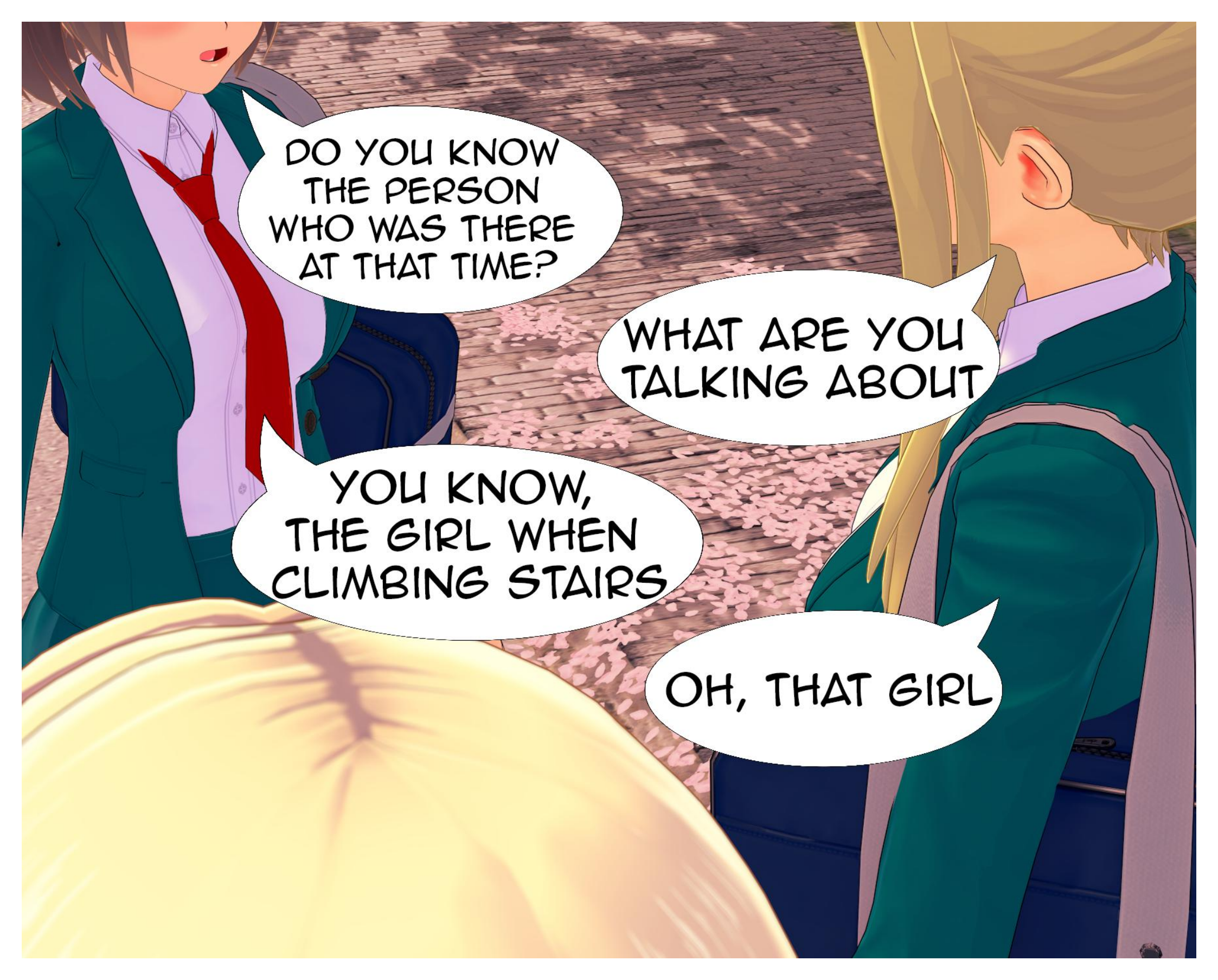


N-NOA...

WHAT'S UP?

HAH

HAH



DO YOU KNOW  
THE PERSON  
WHO WAS THERE  
AT THAT TIME?

WHAT ARE YOU  
TALKING ABOUT

YOU KNOW,  
THE GIRL WHEN  
CLIMBING STAIRS

OH, THAT GIRL



I FEEL LIKE  
THAT SAME GIRL

WHAT ARE YOU  
TALKING ABOUT GUYS ?

THE GIRL WITH THE  
PONYTAIL HAIRSTYLE?

I FEEL LIKE  
HE SUDDENLY  
DISAPPEARS A LOT

DOES THIS HAVE  
ANYTHING TO  
DO WITH YUKKI?

I NEED TO  
MAKE SURE OF IT



SORRY, GUYS

I HAVE SOMETHING  
TO DO AND HAVE  
TO LEAVE IMMEDIATELY

AH, ALRIGHT

YOU'RE  
GOING AGAIN?



SEE YOU LATER,  
MIO AND KIZAKI

BYE, NOA

SEE YOU TOO,  
NOA

A character with long, flowing blonde hair is shown from the side, looking out over a park. The park is filled with large, mature cherry blossom trees in full bloom, their pink petals creating a soft, hazy atmosphere. A paved path leads through the trees, and a grassy area with a wooden bench and a small sign is visible in the distance. A fence and a person can be seen further back. The scene is bathed in the warm, golden light of late afternoon or early morning.

AND  
WITH THIS

I NEED TO DO...





MAKE SURE OF IT



**\*STARE\***



A blonde anime-style girl with purple eyes is peeking from behind a wooden door. She has a small white flower in her hair and is wearing a green jacket over a purple shirt. Her expression is one of concern or worry. The background shows a hallway with a patterned floor and a wall with a horizontal line.

BUT I HAD NO IDEA  
WHERE SHE  
WAS GOING

I FOLLOWED HER  
30 MINUTES LATER



HUUH ?

DON'T TELL ME SHE REALIZED?





DID SHE GO TO TURN?



I NEED TO CATCH  
UP WITH HER NOW







W-WHERE  
IS SHE?



IS SHE  
HERE?

A person wearing a bright yellow hooded cloak is shown from the back, looking towards a park. The park features a paved walkway, a dark bench, and a low wall. In the background, there are green trees and a light-colored building with windows. The scene is lit with a warm, golden light, suggesting late afternoon or early morning. Two speech bubbles are overlaid on the image, containing text.

THERE SHE IS

BUT WHAT WOULD SHE  
DO IN THIS PARK?

A character with long, straight blonde hair, seen from behind, wearing a green dress with a dark blue sash. She stands in a courtyard with a brick-paved ground, a stone bench, and a building with windows in the background. A large speech bubble is positioned above her head.

I HAVE TO SEE  
IT WITH MYSELF



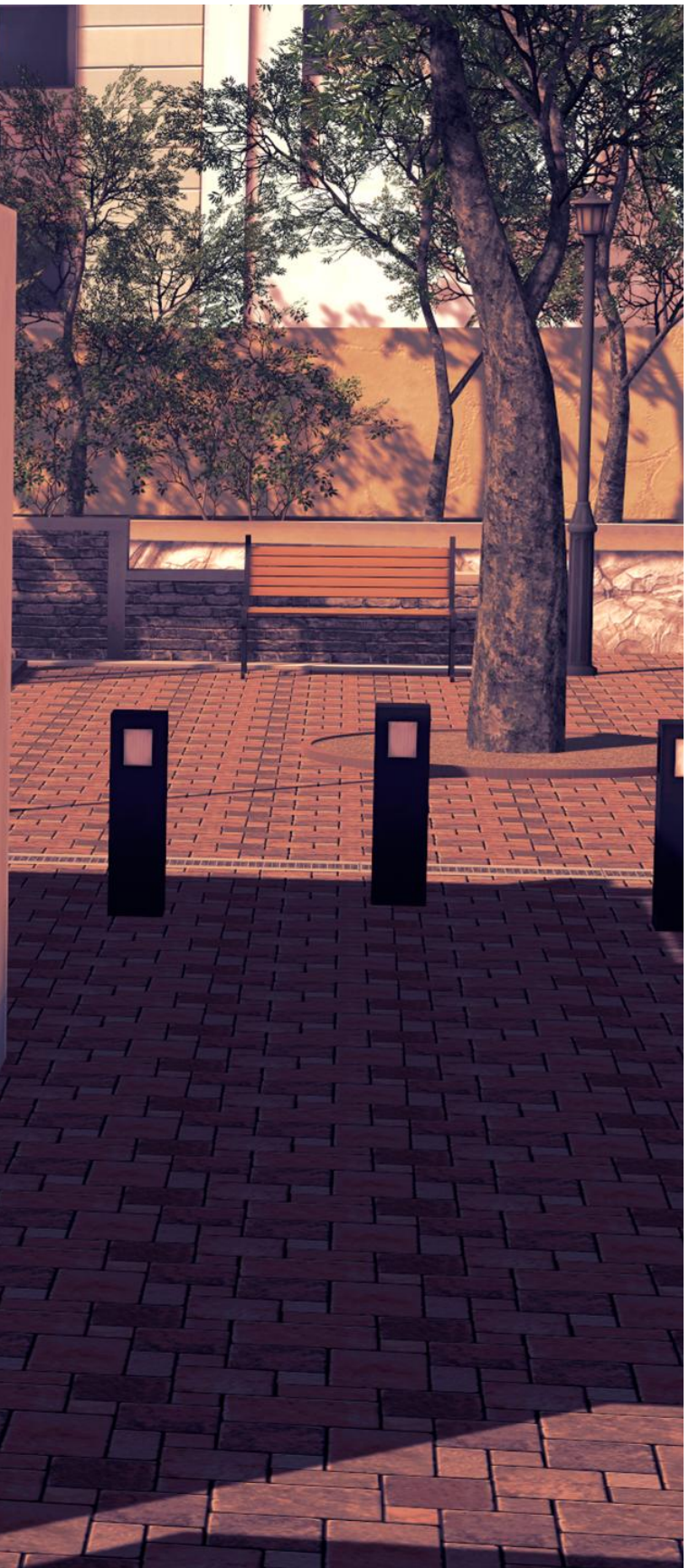
\*WIND  
BREEZE\*



HUH ?



I-I LOST HER ?





\*SWEATING\*

HAHH

...



BUT DID I SEE  
IT WRONG?

A character with long, flowing blonde hair is shown from the back, looking down a hallway. The hallway has wood-paneled walls and a door with a male restroom sign. The lighting is warm, suggesting sunset or sunrise. The character is wearing a green top. The scene is framed by a dark border.

I FEEL LIKE SHE'S  
COMING IN HERE

IT'S IMPOSSIBLE,  
RIGHT?

A character with long blonde hair, wearing a green robe with a purple collar, is shown in profile from the chest up. They are looking out a window. The window looks out onto a bright, hazy outdoor scene. To the right of the window is a dark wooden wall with a vertical lattice window. The floor is made of stone tiles. A speech bubble is positioned in front of the character's mouth.

I-I CAN'T POSSIBLY  
GO IN THERE





LHH ?



AHH

WATCH YOUR  
STEP, DAMN KIDS

AW-AWW



WHAT THE HELL  
ARE YOU SAY?

AT LEAST  
APOLOGIZE



HEY, DON'T  
RUN AWAY

THAT'S YOUR  
FAULT

YOU FOOL!



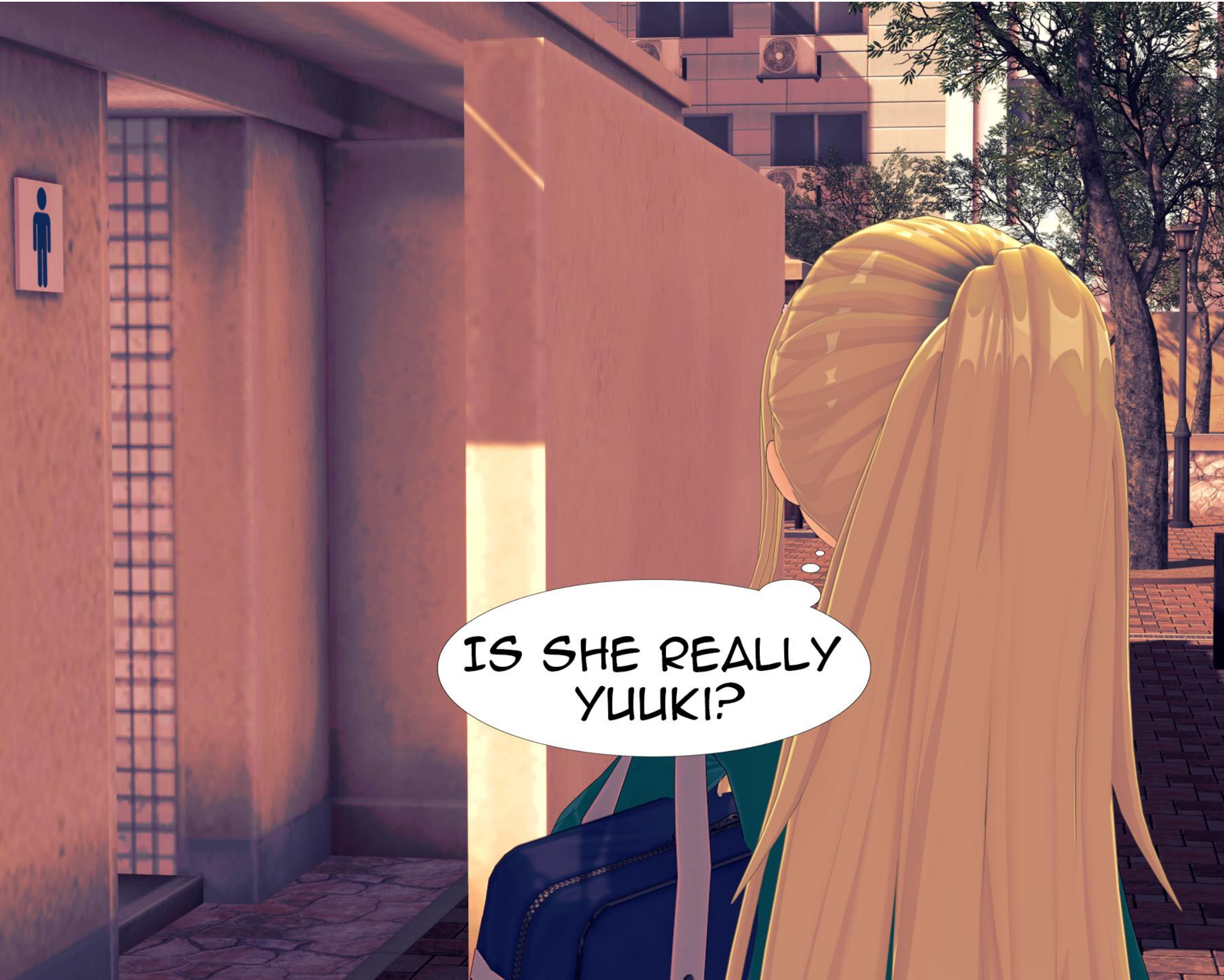
DAMN IT, WHAT'S  
WRONG WITH HIM

A woman with long blonde hair is shown from the chest up. She is wearing a teal blazer over a light purple button-down shirt. A gold chain necklace with a heart-shaped pendant is visible. She has a dark blue messenger bag with a light-colored strap slung over her shoulder. Her right hand is on her hip, and her left hand is partially visible at the bottom right, wearing a purple ruffled wristband. A white speech bubble is positioned to her left, containing the text "I'VE HAD ENOUGH, I'M GOING HOME". The background is a blurred outdoor setting with a brick-paved ground and a building in the distance.

I'VE HAD ENOUGH,  
I'M GOING HOME



IS SHE REALLY  
YUUKI?





I WANT TO  
GO INSIDE

BUT THAT'S  
THE MEN'S TOILET



I'LL JUST  
GO HOME NOW

MAYBE I'LL INVITE  
TANAKA ANOTHER  
TIME



IT'S JUST  
MY FEELING ?

I FEEL LIKE I'M  
BEING FOLLOWED

# INSIDE TOILET





OH ?



IS THIS ME? MY FACE  
LOOKS SO GLOOMY

EHEHE





THIS IS  
THE PLACE ?





SLAM

A character with dark hair, seen from the back, wearing a teal suit jacket over a light purple shirt. The character is standing in a room with a purple and blue background. A large, light purple object is in the foreground. A white speech bubble is positioned to the left of the character.

NERU SENSEI TOLD ME  
TO CHANGE  
MY CLOTHES HERE



AND WAIT FOR ME HERE  
UNTIL SENSEI COME



WHAT SHOULD  
I WEAR FIRST?

THIS IS QUITE  
A LOT TO WEAR



WHAT IS THIS?

CROP TOP ?

ISN'T THIS  
TOO REVEALING?



AND THERE'S  
MORE

IT'S LIKE A  
PIECE OF CLOTH

IS THIS A SKIRT?  
HOW DO I WEAR IT?

A character with long, flowing orange hair is shown from the chest up on the left side of the frame. They are looking towards a collection of clothing and accessories laid out on a dark, grid-patterned surface. The items include a pink crop top with a rainbow and the words 'SPERM BANK', a pair of red-rimmed glasses, a purple handbag, a gold ring, a black choker with a yellow heart, and a gold chain with a 'GIRL' pendant. The character's expression is one of concern or questioning.

WHY ARE ALL THESE  
CLOTHES SO REVEALING?

IF SENSEI  
LIKES IT, I'LL DO IT



I FEEL SO  
HAPPY, SENSEI!



\*YAWNING\*



I'M REALLY SLEEPY



WHAT I DID TODAY  
WAS LIKE A  
WASTE OF TIME



HMM ?



!?



WITH THAT KIND  
OF MAKEUP

WHAT SHE DOES ON  
NIGHTS LIKE THIS

A young woman with long, light-colored hair and purple eyes is shown yawning. She is wearing a dark jacket over a light blue button-down shirt. The background is a city street at night with buildings and streetlights.

*\*YAWNING\**

WHATEVER, I'M TIRED  
OF THINKING  
ABOUT IT

A character with long, straight black hair and a black dress with a scalloped hem is walking away from the viewer on a bridge at night. The bridge has a metal railing on the left and a road with streetlights on the right. In the background, there are city buildings under a dark blue sky. A white speech bubble is positioned in front of the character.

I WANT TO  
SLEEP FOR NOW

An illustration showing a person's legs from the knees down, wearing dark blue or black stockings. The person's hands are visible at the top of the stockings, pulling them up towards the thighs. The background is a dark blue wall with a grid pattern. A white toilet is partially visible in the background. The text '\*PULLING UP STOCKINGS\*' is written in a stylized, white, outlined font on the right side of the image.

**\*PULLING UP STOCKINGS\***



**\*WEARING SKIRT\***

A close-up illustration of a woman's midsection. She is wearing a bright pink bikini bottom with thin white straps. The word "SPERM" is written in large, bold, black letters with a white outline on the left side of the bikini bottom, and the word "BANK" is written in the same style on the right side. Her hands are visible at the top, holding the straps. The background is a dark purple grid pattern.

**SPERM**

**BANK**

**\*WEARING  
CROP TOP\***



UHH, I FEEL LIKE  
A PROSTITUTE

I DIDN'T EXPECT  
SENSEI TO  
WANT ME TO  
LOOK LIKE THIS

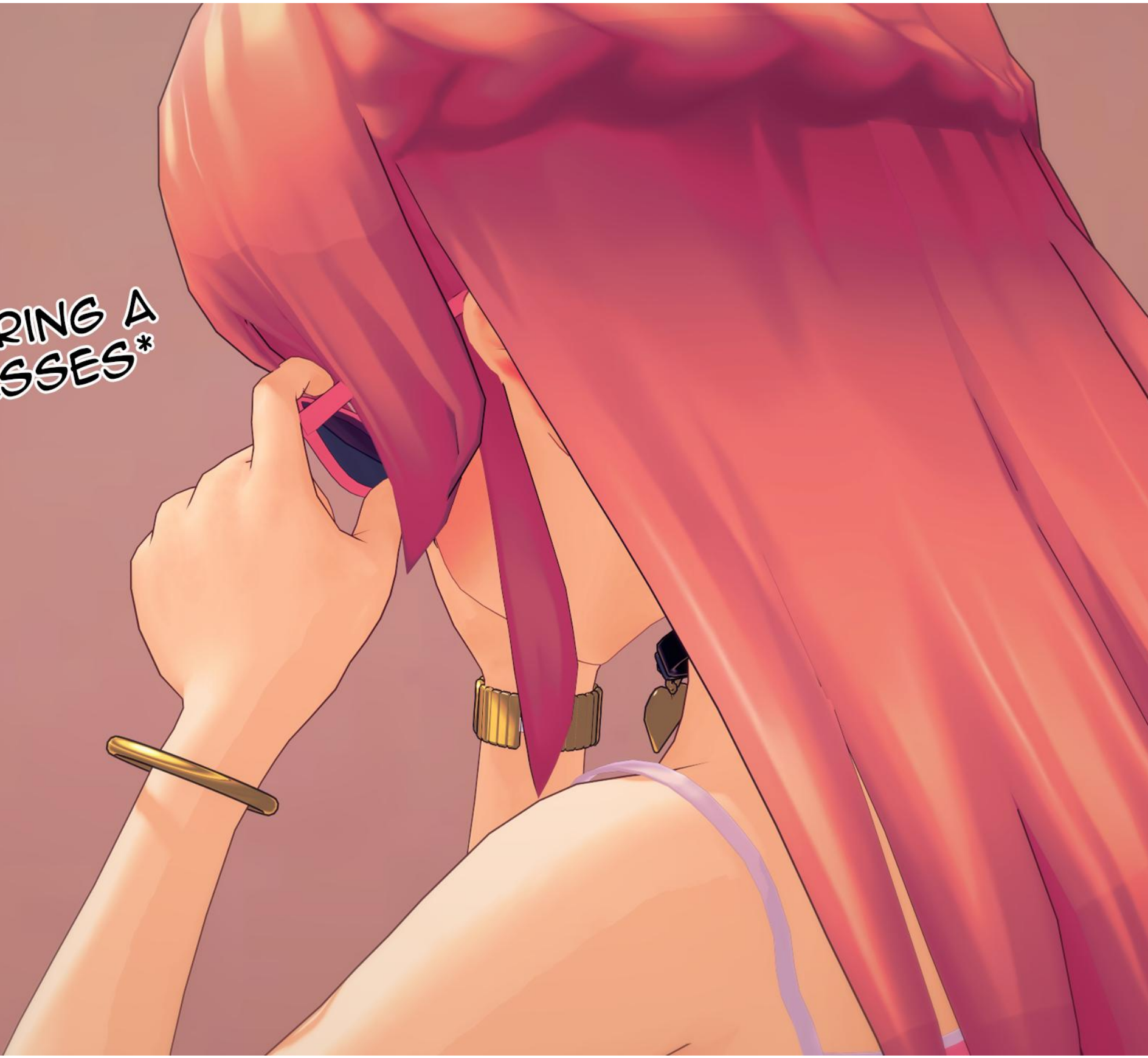
A close-up illustration of a hand locking a bracelet. The hand is shown from the side, with fingers gripping a metal clasp. The clasp is being attached to a bracelet already on the other person's wrist. The background is a grid pattern of reddish-brown squares. The text '\*LOCKING A BRACELET\*' is written in a stylized, white font with a black outline, slanted upwards to the right.

**\*LOCKING  
A BRACELET\***

\*WEARING A WIG\*



**\*WEARING A  
GLASSES\***





IT'S IMPOSSIBLE. . .



I DIDN'T FIND ANY  
PANTIES IN THIS BAG



S-SO I'M GOING  
TO BE WITHOUT  
UNDERWEAR ALL DAY?



**\*WEARING A  
SMALL BAG\***

WHY IS THERE A  
SMALL BAG  
INSIDE THAT BAG?

DO I JUST NEED  
TO USE IT LIKE THIS?



NOW I'M WEARING  
ALL OF THEM



BUT NOT WEARING  
UNDERWEAR  
MAKES ME ANXIOUS



I NEED TO  
WAIT FOR IT

UHH

IT'S COLD





IS THIS  
ENOUGH?

I DIDN'T LOCK  
THE DOOR

SENSEI DIDN'T SAY  
ANYTHING  
ELSE AFTER THAT





I FEEL SLEEPY

SINCE I DIDN'T  
LOCK THE DOOR  
IF I OVERSLEPT

I GUESS I'LL TAKE  
A NAP FOR A MINUTE



CREAK

A pink-haired anime girl with glasses and a black choker with a heart pendant. She is wearing a pink crop top with 'SPERM BANK' written on it. She is also wearing a pink skirt and has her hands on her hips. The background is a dark blue grid pattern.

IS HE  
COMING?

A character with long, flowing purple hair is shown from the back, looking out a window at night. The room is dark, and the floor has a grid pattern. A speech bubble is positioned near the character's head.

LHH  
NERU SENSEI ?





HUUH ?

...

**\*SHOCK\***

W-WHO ARE YOU?

TERM

BANK

ITCHY



I'M NERLI'S  
FRIEND

ARE YOU  
YUUKI?

Y-YES, HOW DO  
YOU KNOW ME?

AND WHAT DO YOU WANT HERE?

DIDN'T HE SAY ANYTHING?

I CAME HERE BECAUSE I WANTED TO PLAY WITH YOU

I'M NOT INTERESTED IN THINGS LIKE THAT

THAT'S TOO BAD

THEN LEAVE ME ALONE



THIS IS OKAY, RIGHT?  
I DIDN'T FOLLOW  
HIS ORDERS

I ONLY WANT TO  
DO IT WITH SENSEI

A pink-haired anime girl with blue eyes is peeking from behind a blue door. She is wearing a pink and white outfit with 'BA' on the chest, black thigh-highs, and blue sneakers. She has her hand over her mouth. A speech bubble points to her with the text 'HMMP?'.

HMMP ?



YOU CAN'T DO THAT,  
SLUT CAN  
ONLY SAY "YES"

HE HAS GIVEN ME  
PERMISSION TO  
ENJOY YOU TONIGHT

HUUH ?

A blue door is shown with a pink-haired character peeking from behind it. The character has large blue eyes and is wearing a brown top. The door has a silver handle with a green light indicator. Two speech bubbles are present: one on the left and one on the right.

NO, I DON'T  
WANT TO DO THIS

SENSEI,  
PLEASE  
STOP HIM

A blue door with a white speech bubble containing the word "CLICK" and a small red light indicator.

CLICK



I STARTED  
TO SUSPECT IT

AFTER WHAT  
HAPPENED YESTERDAY



WHAT HAPPENED  
TO YUKI?

THIS IS THE FIRST TIME  
HE HAS BEEN ABSENT



SO HE IS HERE  
FOR REAL?

YEAH, I'M SURE  
HE'S HERE

BUT I DON'T BELIEVE  
HE DRESSES UP  
LIKE A GIRL



I DIDN'T EXPECT  
THAT EITHER

BTW THIS PLACE  
SMELLS AWFUL



IT'S JUST  
MEN'S TOILET

FORGET IT, LET'S  
TAKE A LOOK  
AROUND QUICKLY



WHAT IF IT  
WASN'T HIM?

TO BE HONEST,  
I DON'T  
REALLY CARE



TANAKA, SOMETHING  
SEEMS STRANGE  
AROUND HERE



ISN'T THAT OUR  
SCHOOL BAG?

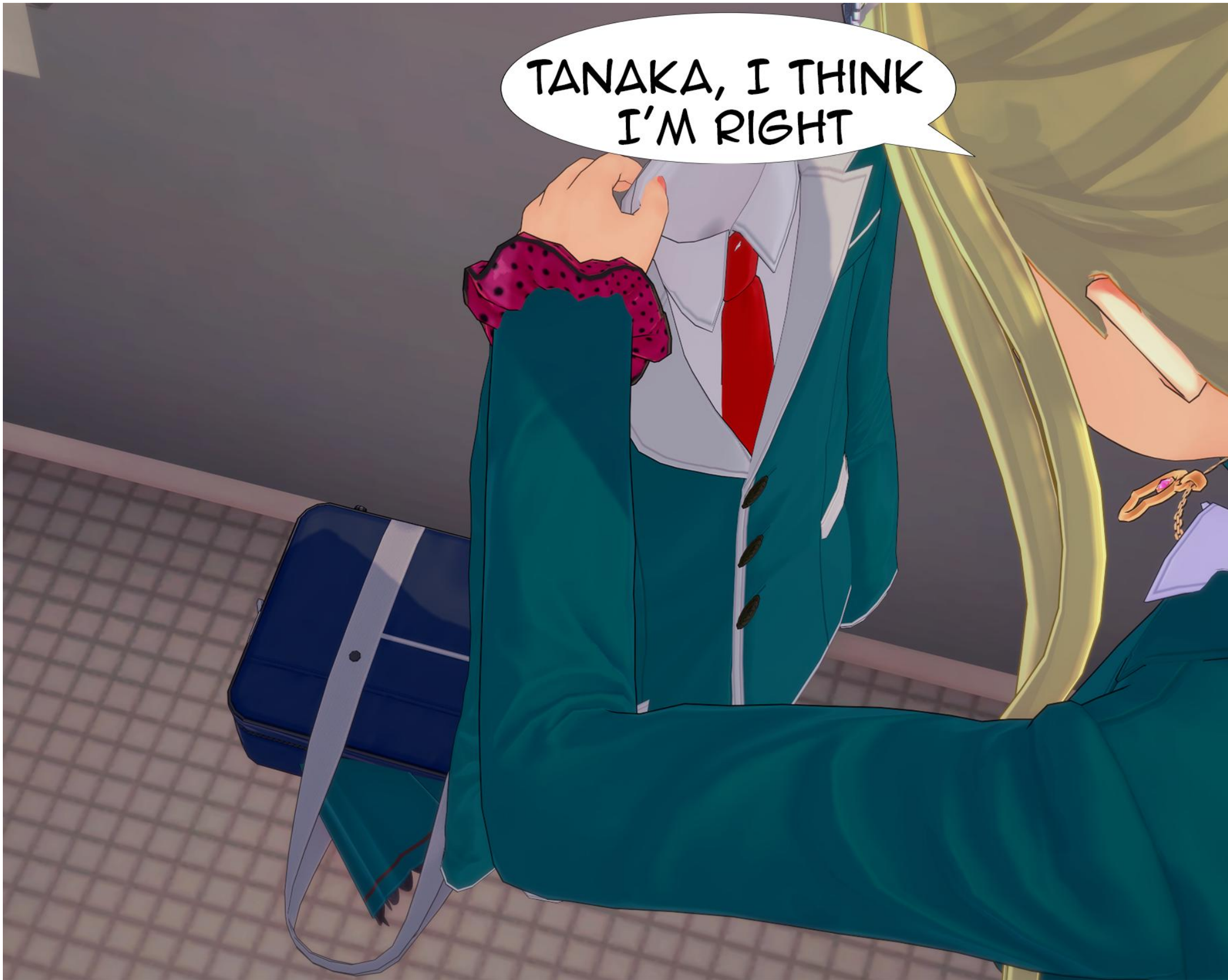
WHAT THE HELL  
IS THAT  
AWFUL SMELL?



NOA, OPENING  
THAT BAG

WAIT, WHY IS  
THERE SO MUCH  
WHITE FLUID?

TANAKA, I THINK  
I'M RIGHT





DON'T SAY WHAT'S  
HAPPENING HERE

YOU'RE RIGHT,  
I KNOW YOU  
UNDERSTAND

A character with long, wavy blonde hair is shown from the back, looking down at a white toilet. The toilet seat is up, and the bowl contains a yellowish-orange liquid with some brown spots. The character is wearing a dark teal jacket over a light purple collared shirt. The background is a wall with a grid pattern.

I CAN'T  
IMAGINE IT

THE DAY BEFORE . . .





\*PUSH\*



HOLD ON, I'M  
GETTING READY  
FIRST

PLEASE STOP



THE SIZE IS DIFFERENT  
FROM SENSEI'S

A close-up illustration of a person's hand. The hand is dark-skinned and has a large, prominent red bruise on the back of the hand, near the wrist. The bruise is circular and has a dark red center with radiating lines. The hand is positioned palm-down. In the background, a light blue sleeve is visible. Two speech bubbles are present: one on the left and one on the right.

YOU SEEM TO BE  
PLAYED WITH  
A LOT HERE

OH, THIS IS  
PRETTY GOOD



I'M SCARED

AND IT HAS  
ALREADY BEEN  
LUBED





WHY IS SENSEI  
DOING THIS TO ME?



\*STRETCH\*

\*STRETCH\*

LET ME TRY  
THIS HOLE



**OUGH!!!**

HAHAHA, THIS IS AMAZING!

\*STRETCH\*

YOU HAVE BEEN WELL TRAINED

DAMN, THIS HURTS SO MUCH



N-NO...

HERE, YOU SHOULD  
TRY ENJOYING  
IT TOO

SPERM BAN



AHHH, WHY  
DOES THIS  
FEEL SO GOOD?

DON'T BE SHY  
ONLY USE  
YOUR NIPPLE

BUT YOU CAN'T  
USE YOUR DICK LOL



ITS FINE TO CLIM  
INSIDE LIKE  
THIS RIGHT ?

NO, DO IT  
OUTSIDE



BUT I CHANGED  
MY MIND

I GUESS I'LL  
DO IT INSIDE

N-NO

DON'T DO  
IT INSIDE



HERE IT COMES



HAA!

HAA!

MY MIND IS STARTING NUMB

\*HEAVY BREATH\*

ML

ML

ML

ML

BANK

A hand is shown holding a purple and blue ribbon. The ribbon is tied in a knot and is being held against a dark blue background. The hand is brown and has a few lines indicating texture. The ribbon has a purple outer layer and a blue inner layer.

UH??

A hand is shown holding a purple and blue ribbon. The ribbon is tied in a knot and is being held against a dark blue background. The hand is brown and has a few lines indicating texture. The ribbon has a purple outer layer and a blue inner layer.

TELL ME  
HOW YOU FEEL

IM CLIMMING

OUGH!!!

RIGHT NOW

\*BLOATED\*



IT-ITS FEEL  
GOOD ♡

A stylized illustration featuring a large purple and blue bow. The bow is composed of two layers: a darker purple outer layer and a lighter blue inner layer. The bow is tied in the center and has a small purple loop at the top. The background is a light purple color with some faint, dark lines suggesting a textured surface. A white speech bubble with a black outline is positioned to the right of the bow, containing the word "GURGLE" in a bold, black, sans-serif font.

**GURGLE**

AH...MY HEAD



A digital illustration of a man with a shaved head and sunglasses, wearing a blue t-shirt, standing over a person lying down. The person lying down is covered with a blue sheet, and their hand is visible on the sheet. The man has a slight smile and is looking down at the person. A white speech bubble with black text is positioned to the left of the man. The background is a dark blue wall.

AS EXPECTED, YOU  
DID PRETTY WELL

HEY THIS ISN'T  
FINISHED YET





CLEAN UP  
MY DICK FIRST

WHY IS HIS  
DICK STILL HARD

AHH, YOU'RE DOING  
WELL WITH  
YOUR MOUTH TOO





I'M GOING TO  
CLIM ONE  
MORE TIME

PREPARE  
YOURSELF, YUKI

IM  
CAME OUT

GULP

GULP



HAAA, I FEEL  
BETTER

BWAAHH!

GOODBYE YULKI,  
LET ME KNOW  
IF YOU WANT  
TO PLAY WITH ME





SEE YOU  
LATER, YUKI!

HAHH

WHY IS THIS ALWAYS HAPPENING TO ME?

\*STARTED CRYING\*

HIC  
HIC



I THINK I'LL  
GO HOME TODAY

CLOMP-  
CLOMP



HUH?

WHO ARE  
YOU NOW?



YOU MUST BE  
YUKI, RIGHT?

YOU KNOW WHAT  
YOU HAVE TO DO

AHH... NO



N-NO

PLEASE LET  
ME GO

PLEASE LET  
ME REST

NO, I CAN'T  
TAKE IT ANYMORE

AAAAA!!!,  
I'M CLIMING



I'LL RENT IT FROM YOU NEXT TIME, YULUKI

UHUK

UHUK

3 HOURS LATER...



HAHH

I CAN'T SWALLOW  
IT ANYMORE



BLEGH!



LIRGHHH!

!?

WUEEK

URGHH!!!



HE SEEMS TO  
BE IN PAIN

UHUUU



UHUK!

UHUK!



HEY, ARE YOU OKAY?

DON'T SAY I'LL DO IT AGAIN?

WHO IS THIS?

P-PLEASE  
STOP

I CAN'T TAKE  
IT ANYMORE

IT SEEMS LIKE  
YOU MISUNDERSTOOD



I'M NOT GOING  
TO DO ANYTHING

SO WHAT ARE  
YOU DOING HERE?

AND WHY IS A GIRL  
LIKE YOU HERE?



GIRL? AH, ACTUALLY  
I'M MAN

HUUH ?

SURPRISED ?  
I'M JUST LIKE YOU