

A TRANSFORMATION
COMIC BY
ANGRBODX

RUBY, IS SOMETHING
WRONG WITH YOUR
CAMERA?

Y-YEAH, SORRY,
JUST A BIT OF A
TECHNICAL
ISSUE!

onboarding

a workplace guide to becoming a sexdoll

18+

ADULT
AUDIENCES



Onboarding

a workplace guide to becoming a sexdoll

A TRANSFORMATION COMIC
BY ANGRBODA

Copyright 2025 Angrboda

(monstrousdoctor@gmail.com)

Only authorized for distribution via
itch.io - please do not redistribute
or post anywhere else online.

**No LLMs or AI were used in the
creation of this work.** None of
the contents are authorized for the
use of training AI models.



UGH, OF COURSE THIS MYSTERY MEETING INVITE IS IN SOME BACK HALL CONFERENCE ROOM I'VE NEVER BEEN TO.

I WISH I KNEW WHAT THIS IS ABOUT...

IT'S GOTTA BE THAT WEIRD **PERSONALITY SURVEY** THEY SENT - I WAS WORRIED IT WAS SOME KIND OF PHISHING TEST.



THIS HAS TO BE MY SURPRISE **SECURITY TRAINING** BECAUSE I CLICKED ON IT -



skzzt
HELLO, MISS BRADFORD.

PLEASE HAVE A SEAT. THE OTHER MEMBERS OF THIS MEETING WILL BE JOINING US -



- MOMENTARILY.

click



---UH---




UPPER MANAGEMENT WAS SO PLEASED WITH YOUR RECENT SURVEY FEEDBACK THAT WE'D LIKE TO FAST TRACK YOU FOR A... SIGNIFICANT **PERSONAL GROWTH OPPORTUNITY.**

TO THAT END WE'D LIKE TO INTRODUCE SOME OF YOUR POTENTIAL COLLEAGUES IN OUR NEW **SELF CARE AND PERSONAL PLEASURE DIVISION.**



...WHAT?



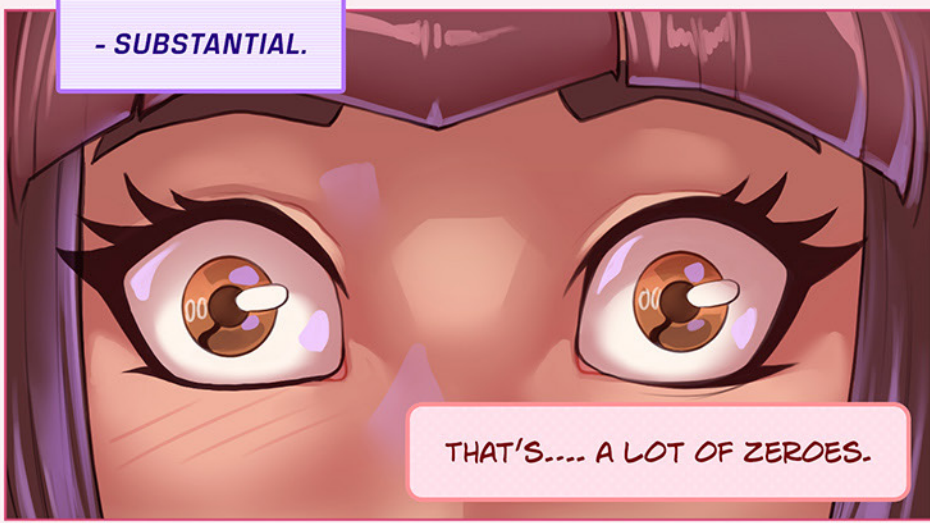
WE'RE LAUNCHING A NEW PRODUCT -
THE **EROS UNIT**, A **PERSONAL PLEASURE LIAISON**.

GIVEN YOUR OUTSTANDING PERFORMANCE AND THE RESULTS OF THE COMPATIBILITY INDEX YOU RECENTLY COMPLETED, WE THINK YOU'D BE A GREAT FIT FOR THE ROLE OF **CLIENT EXPERIENCE SPECIALIST**.

IT'S A SIGNIFICANT...
MODIFICATION TO YOUR CURRENT
ROLE, BUT I CAN ASSURE YOU
THAT AS A CAREER MOVE YOU'LL
FIND IT QUITE TRANSFORMATIVE.



AND OF COURSE, THE
SALARY AND BENEFITS
PACKAGE IS -



- SUBSTANTIAL.

THAT'S.... A LOT OF ZEROES.



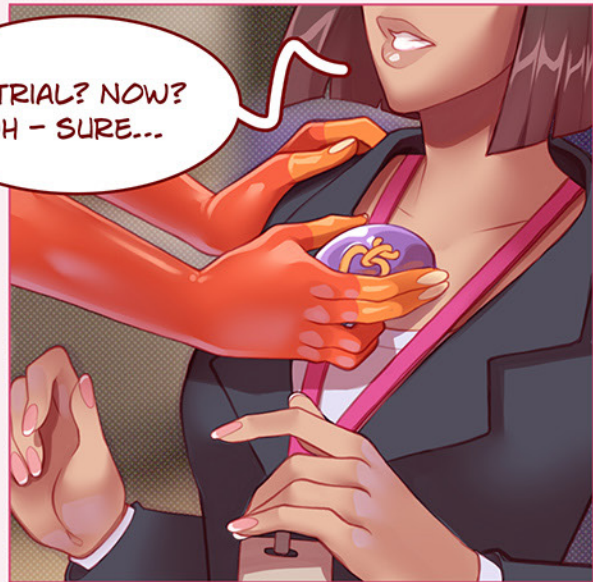
I'M VERY FLATTERED.

(AND TEMPTED)

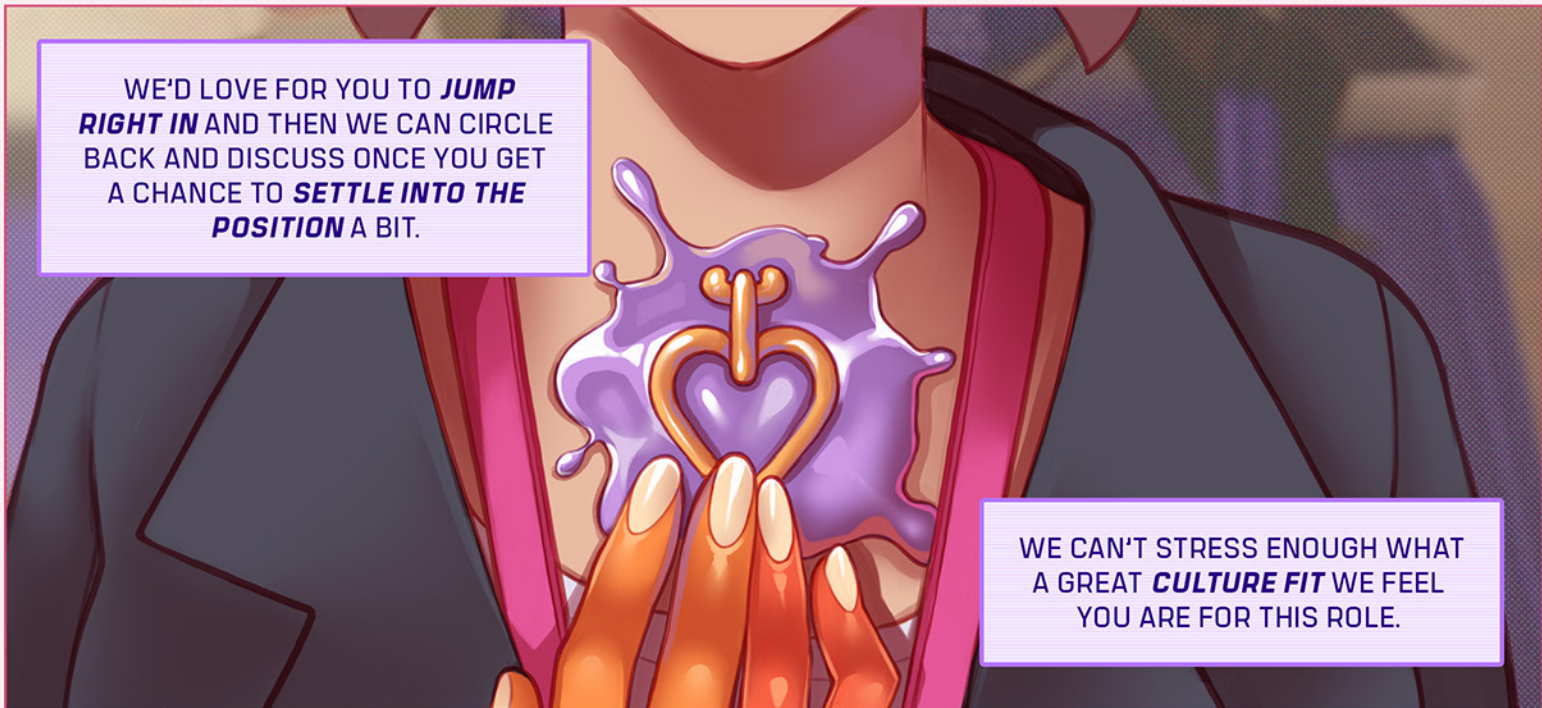
WHAT'S THE...
SCOPE OF THE ROLE?



IF YOU'D LIKE, WE'VE SET UP SOMETHING OF A **TRIAL ONBOARDING** FOR YOU NOW.



A TRIAL? NOW?
UH - SURE...



WE'D LOVE FOR YOU TO **JUMP RIGHT IN** AND THEN WE CAN **CIRCLE BACK** AND DISCUSS ONCE YOU GET A CHANCE TO **SETTLE INTO THE POSITION** A BIT.

WE CAN'T STRESS ENOUGH WHAT A GREAT **CULTURE FIT** WE FEEL YOU ARE FOR THIS ROLE.



THIS STUFF FEELS WEIRDLY *WARM*.




WHOA!! YOU JUST - OKAY...



WE THOUGHT IT BEST TO START OUT BY ACQUAINTING YOU FIRST HAND WITH SOME OF THE *EROS* UNIT'S **SIGNATURE FEATURES...**



RRRIP



AS YOU CAN SEE, EACH UNIT IS COMPOSED OF OUR ULTRA-RESILIENT **SENSISTIM™** SYNTHETIC MATERIAL.



WHUMP



SENSISTIM™ ALLOWS ALL KINDS OF CUSTOMIZATION OPTIONS -



SQUAK



- INCLUDING PIERCINGS -

- AND OVER 125,000 LEVELS OF **REALTOUCH™** FEEDBACK, GIVING UNITS AN INCREDIBLE RANGE OF SENSATION TO RESPOND TO.

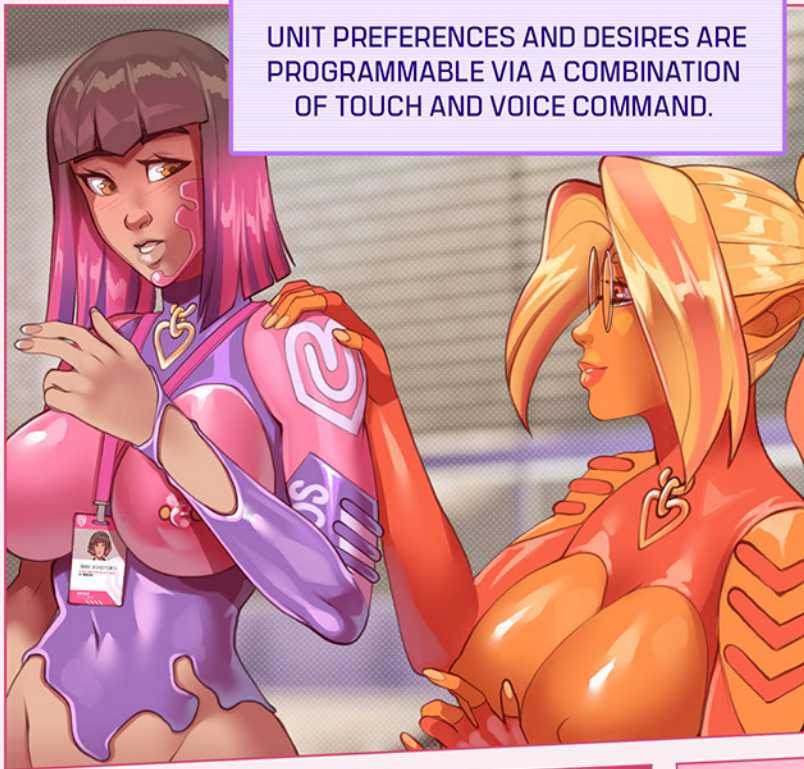
Ahhh...

THIS... IS WEIRD, RIGHT?

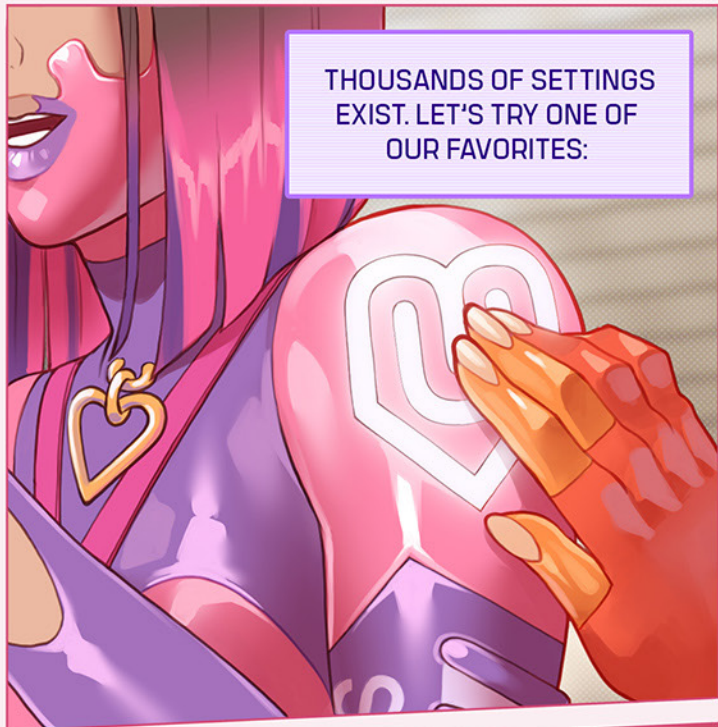
I SHOULD BE... EMBARRASSED? WORRIED?

BUT... THIS IS ALL PART OF MY NEW... ROLE...

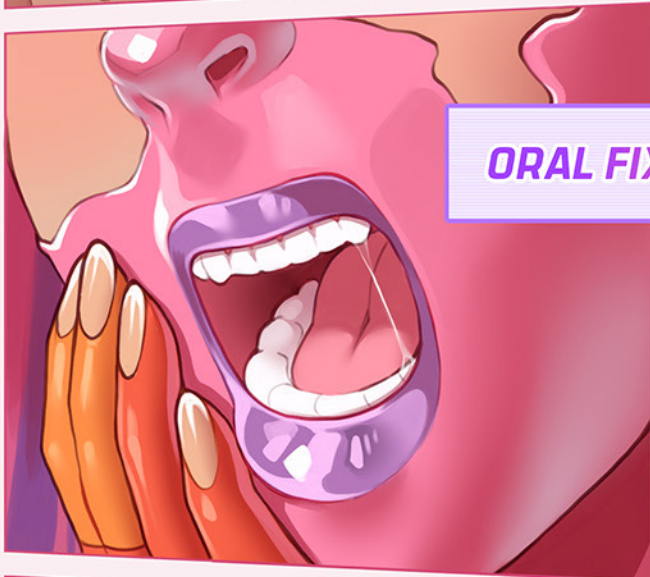




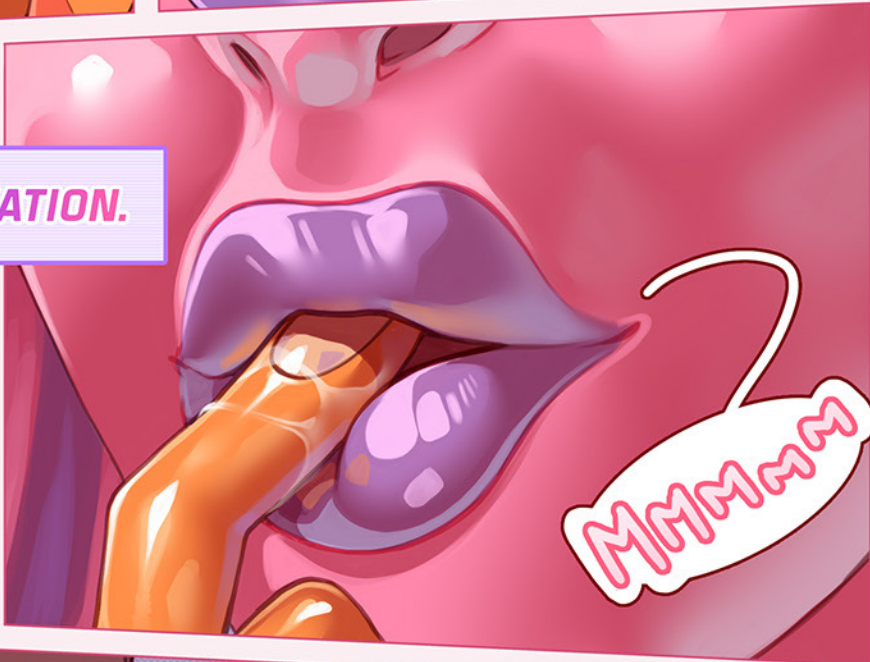
UNIT PREFERENCES AND DESIRES ARE PROGRAMMABLE VIA A COMBINATION OF TOUCH AND VOICE COMMAND.



THOUSANDS OF SETTINGS EXIST. LET'S TRY ONE OF OUR FAVORITES:



ORAL FIXATION.




OH... THAT. I **NEED** THAT.



ORAL FIXATION IS A SINGLE-DRIVE COMMAND THAT CLEARS EXISTING PREFERENCES -



- AND ORIENTS **ALL UNIT DESIRES**
TOWARDS SERVICING THE END
USER ORALLY.



THIS ALLOWS THE END
USER TO TAKE GREAT
ADVANTAGE OF ALL THE
RELATED FEATURES OF
EACH UNIT, FROM
SYNTHETIC
PERFECTGLIDE™
INTERNAL LUBRICATION -



TO THE CONSTANTLY
ADJUSTING **TRUEGRIP™**
ORIFICE TECHNOLOGY.

UNITS ARE DESIGNED TO
RECOGNIZE EVERY SUBTLE
USER CUE AROUND TIMING
AND RHYTHM TO DELIVER A
PERFECT ORAL EXPERIENCE.

A woman with long, straight pink hair and bangs is sitting on a dark ledge. She is wearing a purple and pink outfit with large, rounded breasts and a purple choker with a gold heart. She has a purple glove on her right hand and a purple high-heeled shoe on her left foot. She is looking towards the viewer with a surprised expression. A name tag is pinned to her chest that reads "RUBY SHADFORD".

COMMANDS CAN ALSO BE
DISMISSED AT ANY TIME WITH THE
VERBAL COMMAND:

CANCEL.

HUH? I DON'T - I WAS SO
BLISSSED OUT ALL OF THE
SUDDEN! HOW FAR IS THIS
GOING TO GO?

I THINK - I THINK I STILL
WANT MORE... TO GO
FURTHER...

NOW THAT WE'VE REVIEWED
THE ORAL FEATURES, LET'S
MOVE TO THE CROWN JEWEL
OF THE **EROS** UNIT -



- THE **PERFECTFIT™** PUSSY.



AH! MY - SHE'S -


PLEASE, JUST -



SQUEEZE



AS YOU CAN SEE, THE INTERNAL TEXTURE CAN BE ADJUSTED TO A RANGE OF SETTINGS FROM **NATURAL** TO **TOY**, ALLOWING FOR FULLY CUSTOMIZABLE END USER SERVICE.



SETTINGS CAN EVEN BE SAVED TO FAVORITES SO UNITS WILL REMEMBER AND RECALL THEM!

EROS UNITS ALSO EXCEL ON THE RECEIVING END OF PLEASURE, WITH ADJUSTABLE CLIT SENSITIVITY -

- AND ON-COMMAND

ORGASM.

BUT THAT'S HARDLY ALL - LET'S CHECK OUT OUR NEWEST FEATURE:





- **MODBODY™** RESPONSIVE TECHNOLOGY.

RESPONDING TO THE VOICE COMMAND:

**RESHAPE:
FULLBODY FEMME**

THIS UNIT'S **ENTIRE PRESENTATION** CHANGES, REALIGNING PLEASURE POINTS AND GETTING READY FOR A DIFFERENT TYPE OF PLAY!

MOBODY™ CAN ALSO BE LOCALIZED.
FOR EXAMPLE, THE COMMAND

**RESHAPE:
GENITALS MASC**

AAAATHHHHHH

ALLOWS A FEMME UNIT ACCESS TO
A DIFFERENT TYPE OF PLEASURE BY
RESHAPING ONLY ONE AREA AND
EQUIPPING HER WITH HER OWN
SYNTHETICCOCK™.

SQUEEZE





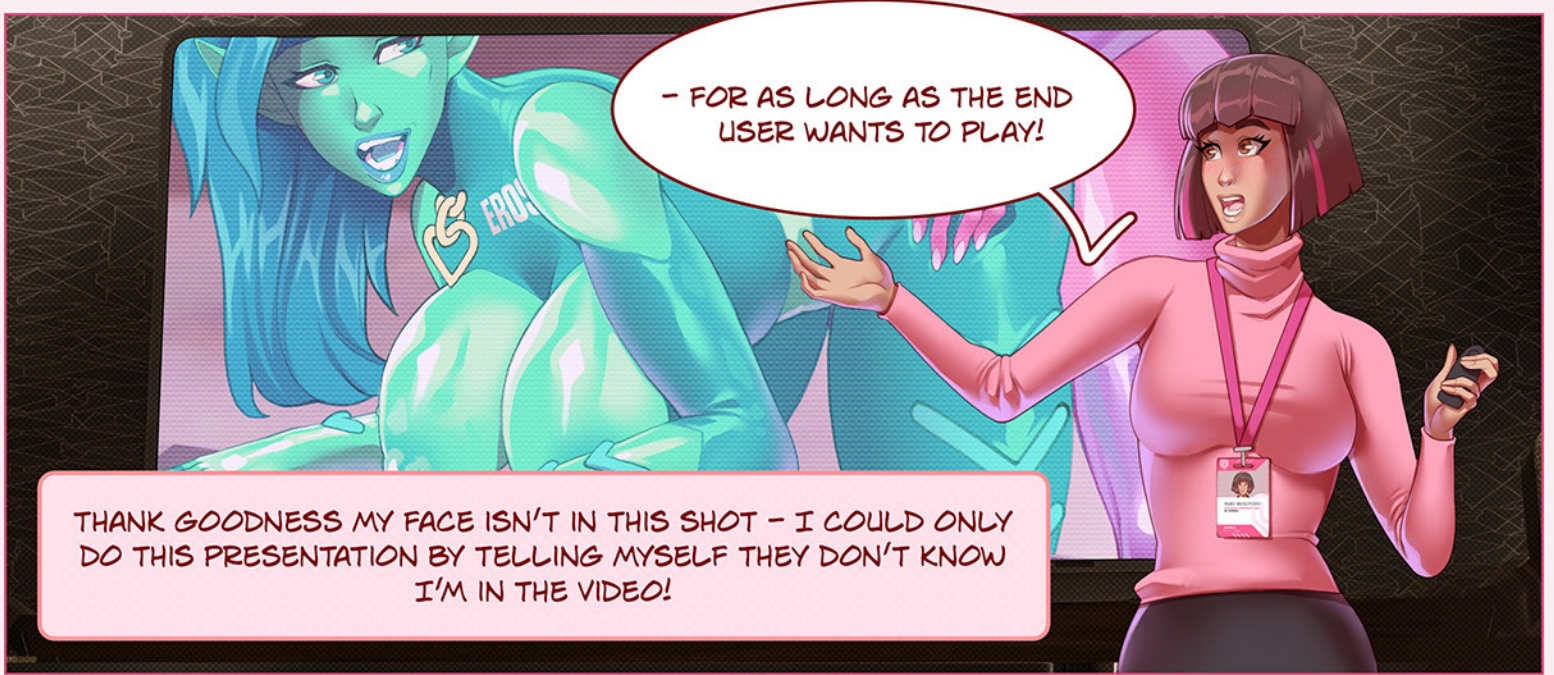
LIKE THE MASC
UNIT'S DEFAULT
SETTING, HERS
IS MORE THAN
CAPABLE -

HUH-
HFF
GASP

SQUEEZE

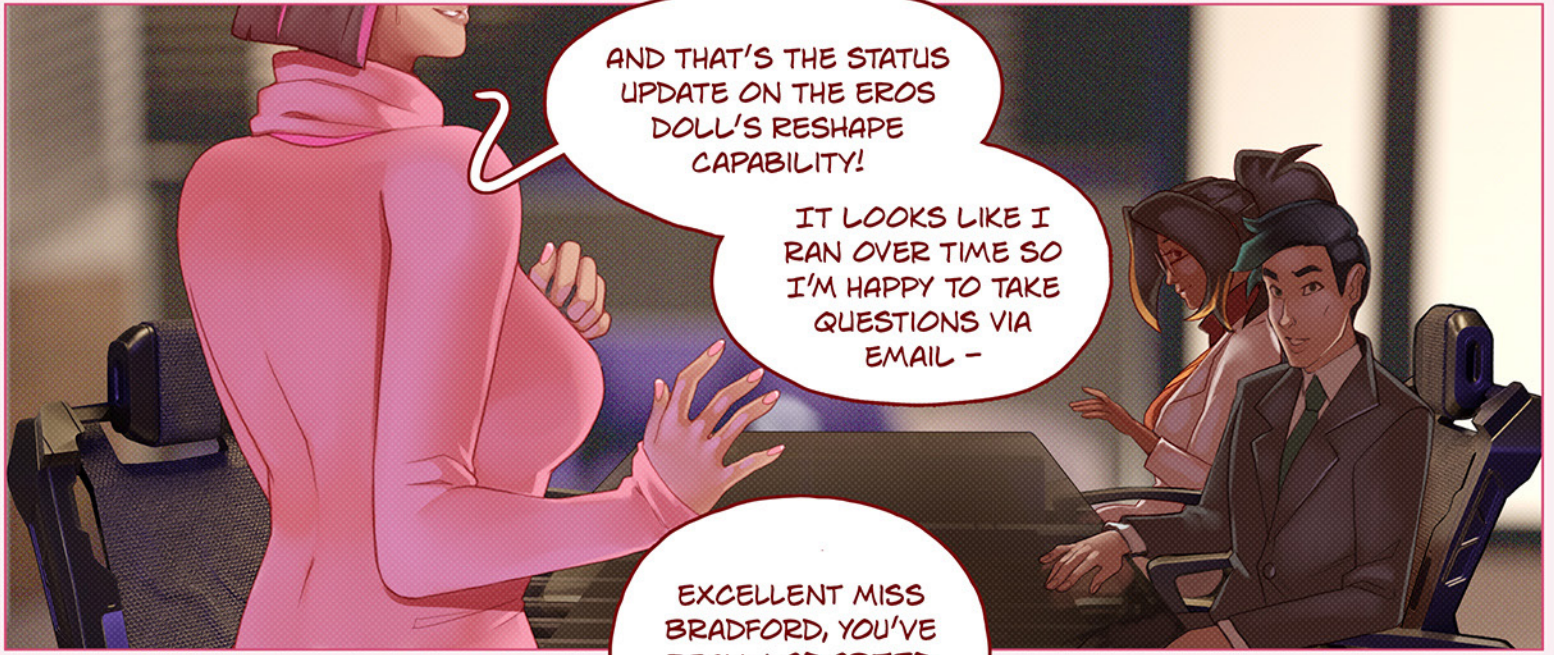
SMACK
SMACK

OF GIVING *AND* RECEIVING
PLEASURE -



- FOR AS LONG AS THE END USER WANTS TO PLAY!

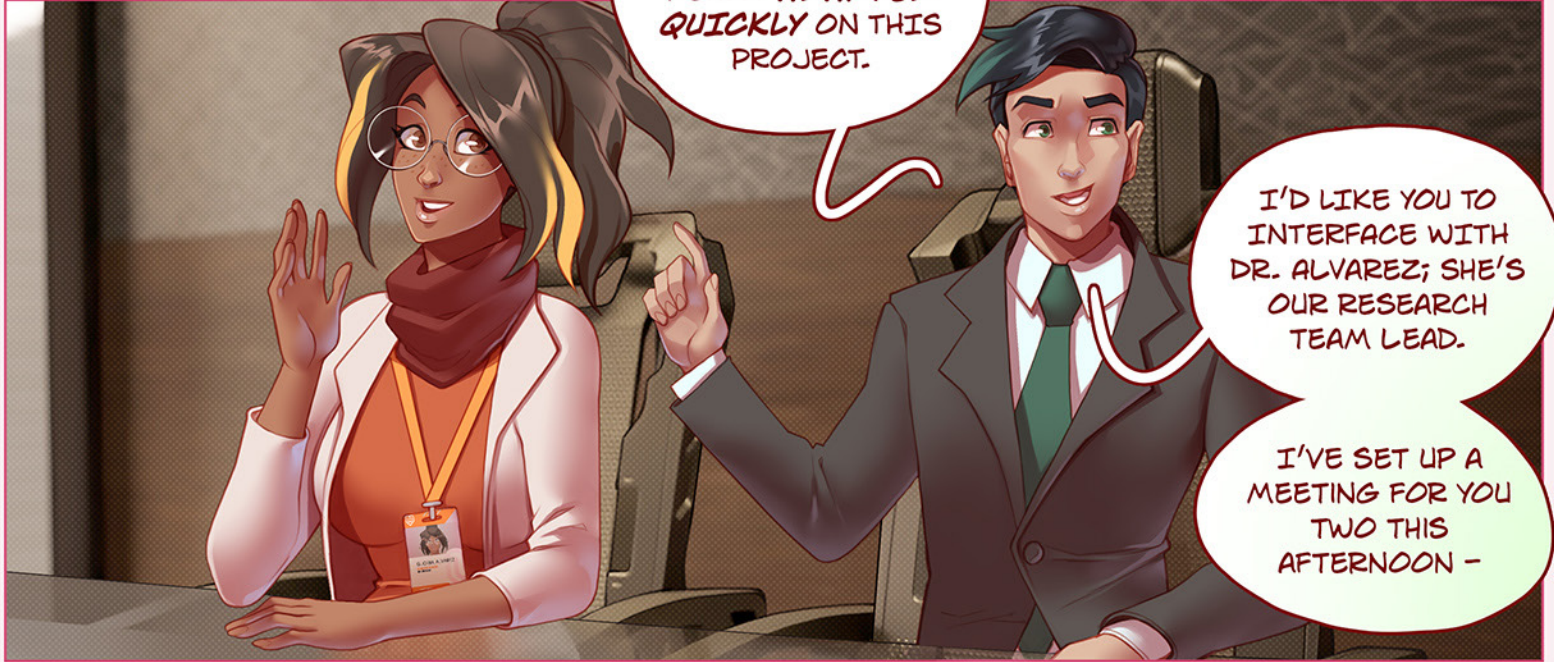
THANK GOODNESS MY FACE ISN'T IN THIS SHOT - I COULD ONLY DO THIS PRESENTATION BY TELLING MYSELF THEY DON'T KNOW I'M IN THE VIDEO!



AND THAT'S THE STATUS UPDATE ON THE EROS DOLL'S RESHAPE CAPABILITY!

IT LOOKS LIKE I RAN OVER TIME SO I'M HAPPY TO TAKE QUESTIONS VIA EMAIL -

EXCELLENT MISS BRADFORD, YOU'VE REALLY **ADAPTED QUICKLY** ON THIS PROJECT.



I'D LIKE YOU TO INTERFACE WITH DR. ALVAREZ; SHE'S OUR RESEARCH TEAM LEAD.

I'VE SET UP A MEETING FOR YOU TWO THIS AFTERNOON -

- I'D LIKE YOU TO PICK EACH OTHER'S BRAINS AND SEE WHAT **SYNERGIES** YOU CAN COME UP WITH!

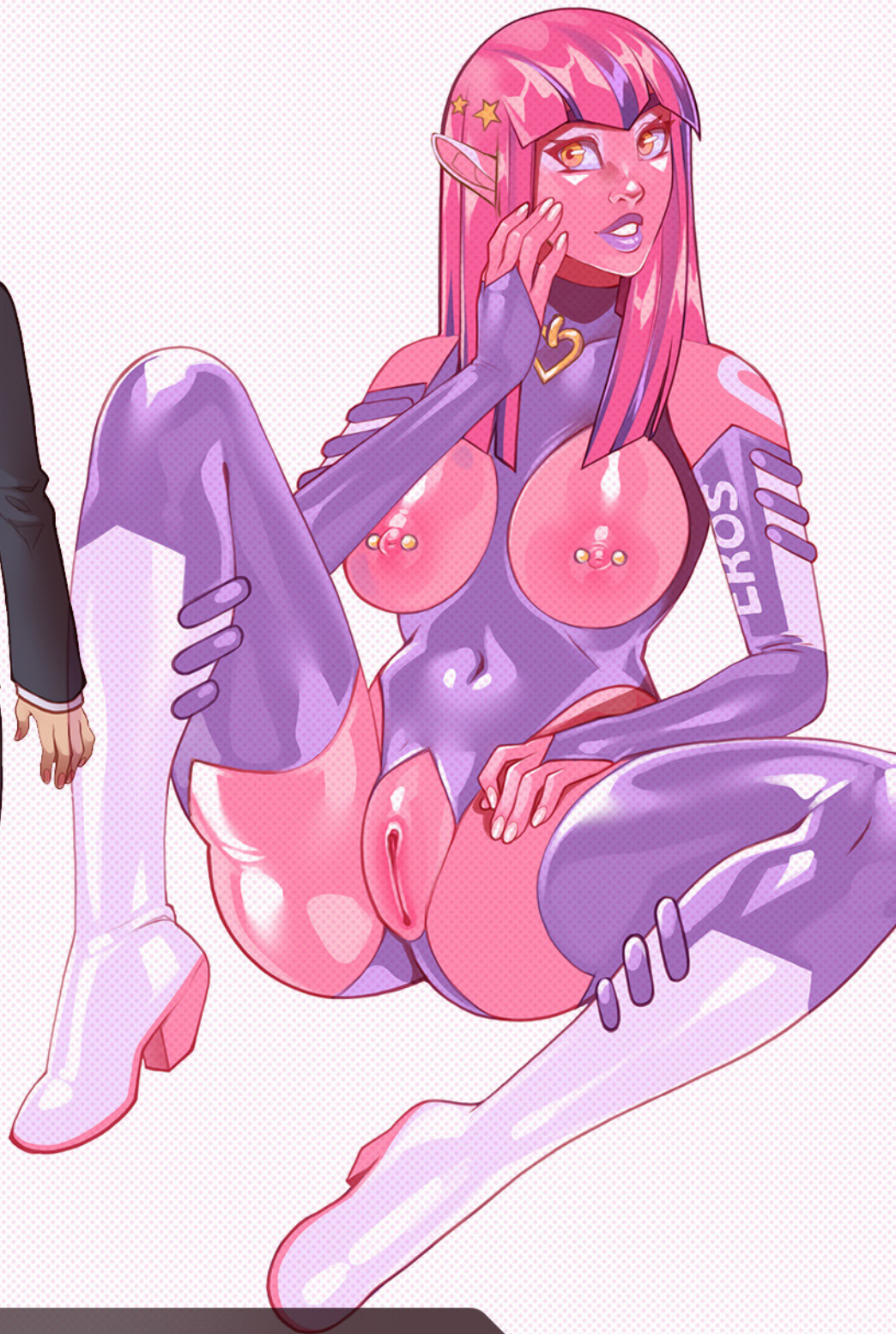
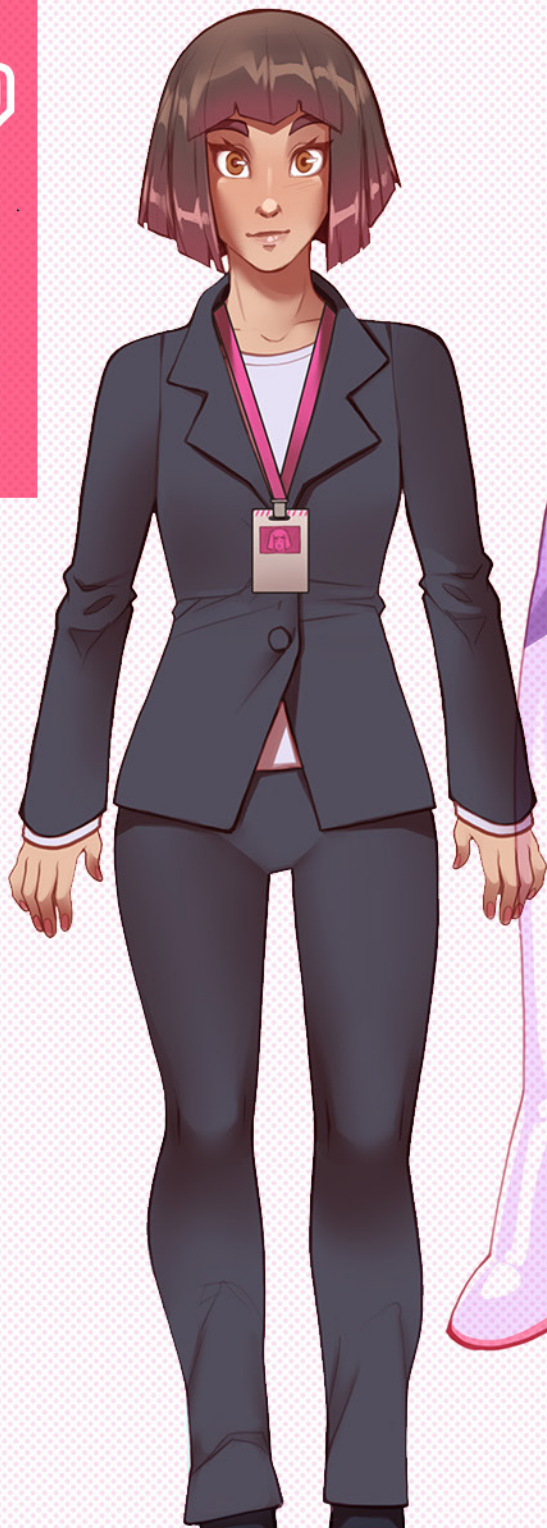
THESE PLASTICITY MEASUREMENTS ARE **IDEAL**, RUBY. NOW IF YOU'LL FINISH CHANGING, WE CAN MOVE ON TO A FEW MORE TESTS...

Ahhhhh...
Yes m'ams



BONUS MATERIAL





RUBY BRADFORD

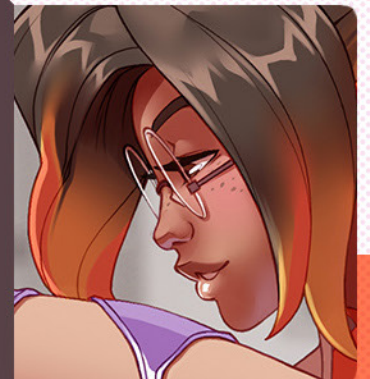
Is a young woman diligently working to climb the corporate ladder, while trying to ignore the growing feeling of dissociation and aimlessness her job often provokes. UVM like any big biomech company can be something of a black box, but she had no idea her own employer had a project brewing that aligned so closely with her extremely non-work-related interests.





GLORIA ALVAREZ

Is *Doctor Alvarez*, actually, but she wouldn't correct you because then she might have to explain her... *extremely unique* biomech specialization to a layperson. The Eros program was her own pitch to UVM because she'd done enough research on the owner to (correctly) expect *lots* of funding. She was the first subject - what kind of mad doctor would she be if she didn't experiment on herself?





CLARK MEADOWS

Is UVM's owner-CEO, which is a big enough job that he only ever touches most individual projects lightly. Something in the info Gloria turned up on him made her sure that he would greenlight Eros, and oh boy, did he. Spending time as a sex doll lets him relinquish control and gives him a taste of the carefree himbo life he craves.



RUBY, IS SOMETHING
WRONG WITH YOUR
CAMERA?

Y-YEAH, SORRY,
JUST A BIT OF A
TECHNICAL
ISSUE!

REALTOUCH™
AN INCREDIBLE
R

LIKE THE MASC
UNIT'S DEFAULT
SETTING, HERS
IS MORE THAN
CA

thank you

to everyone who bought this and supported independent, niche comics. I love sex-doll stuff but I'm very aware it's tricky to get "right" so I really hope folks enjoyed my particular take on it.



As always a thank you is also in order to Abe who both helped me brainstorm and rough out this story from the get-go and gave me feedback and proofreading help.

If you'd like to see more of my work, you can find it at my site below, just click the logo. There's free art and stories, along with a catalogue of other TF projects you might like:

MONSTROUSDOCTOR
THE ART & STORIES OF ANGRBODA & ABE E SEEDY

THIS... IS WEIRD, RIGHT?

An additional thanks to the 3D artists on cgtrader from whom assets were purchased for BG paintover and continuity help.

