

失控

-中-



*R18本故事纯属虚构，并且所有登场角色均已满十八岁

*R18the story is entirely fictional, and all characters in it are adults.

MISS REINA... I'LL GO WITH THE
TEMPORARY OPTION.

FIRST, PLEASE MAKE ME A
REALISTIC MASK OF MY MOM.



KOBAYASHI
MIDORIKO

I ALSO THINK A MASK IS A BETTER
CHOICE THAN PLASTIC SURGERY-IT
ALLOWS MORE FLEXIBILITY TO HANDLE
VARIOUS SITUATIONS IN YOUR LIFE.



YOU TWO WAIT A MOMENT,
PLEASE. THE MASK WILL BE
READY SOON.





SON, I'VE WANTED TO ASK YOU
SINCE EARLIER—MOM BEING FORCED
INTO THIS STATE IS ONE THING.

BUT WHY ARE YOU...? CAN YOU EXPLAIN
TO MOM WHY YOU SWITCHED INTO HER
BODY?

YOU DON'T KNOW, MOM—AFTER YOUR ACCIDENT, I GOT A MESSAGE FROM DAD SAYING HE'S COMING BACK NEXT WEEK.

WOULDN'T IT CAUSE EVEN MORE TROUBLE IF HE SAW YOU LIKE THIS NOW?

THEY SAID HEAD TRANSPLANTS ARE SIMPLE FOR THEM, SO I HAD TO TEMPORARILY TAKE OVER YOUR BODY.

ONCE YOU HAVE A BETTER BODY LATER, WE CAN FIGURE THINGS OUT.

INDEED, WITH MY CURRENT BODY... I
REALLY COULDN'T FACE YOUR FATHER.

SON, YOUR THINKING IS ACTUALLY
QUITE CONSIDERATE... I SUPPOSE
WE'LL HAVE TO GO ALONG WITH THIS
FOR NOW.



A LITTLE WHILE
LATER

THIS MASK IS THE DEVICE WE'VE MADE FOR YOU
TO ALTER YOUR FACIAL APPEARANCE.

THIS... IT LOOKS
EXACTLY LIKE MY FACE...

YES, THIS MASK WAS MADE ON-SITE
USING 3D SCAN DATA FROM MS. SU'S
ORIGINAL FACE AND NANOBIMATERIALS.
ONCE WORN, IT ADJUSTS THE WEARER'S
FACIAL SHAPE TO LOOK JUST LIKE YOU.



THE FIT ACCURACY REACHES 99.98%,
MATCHING EVEN MICRO-EXPRESSIONS AND
SKIN TEXTURE PERFECTLY.




HERE YOU GO, MR.
ZHANG...



KOBAYASHI
MIDORIKO

WOW, IT'S SO THIN—ALMOST
WEIGHTLESS.



H-HOW DO I PUT
IT ON?

JUST GENTLY PRESS IT ONTO YOUR
FACE LIKE APPLYING A FACE MASK.

LIKE A FACE MASK?



A woman with dark hair, wearing a blue suit jacket over a pink collared shirt, is looking down at a pink, mask-like object she is holding with both hands. The background is a dark, industrial-looking interior with some blue lighting.

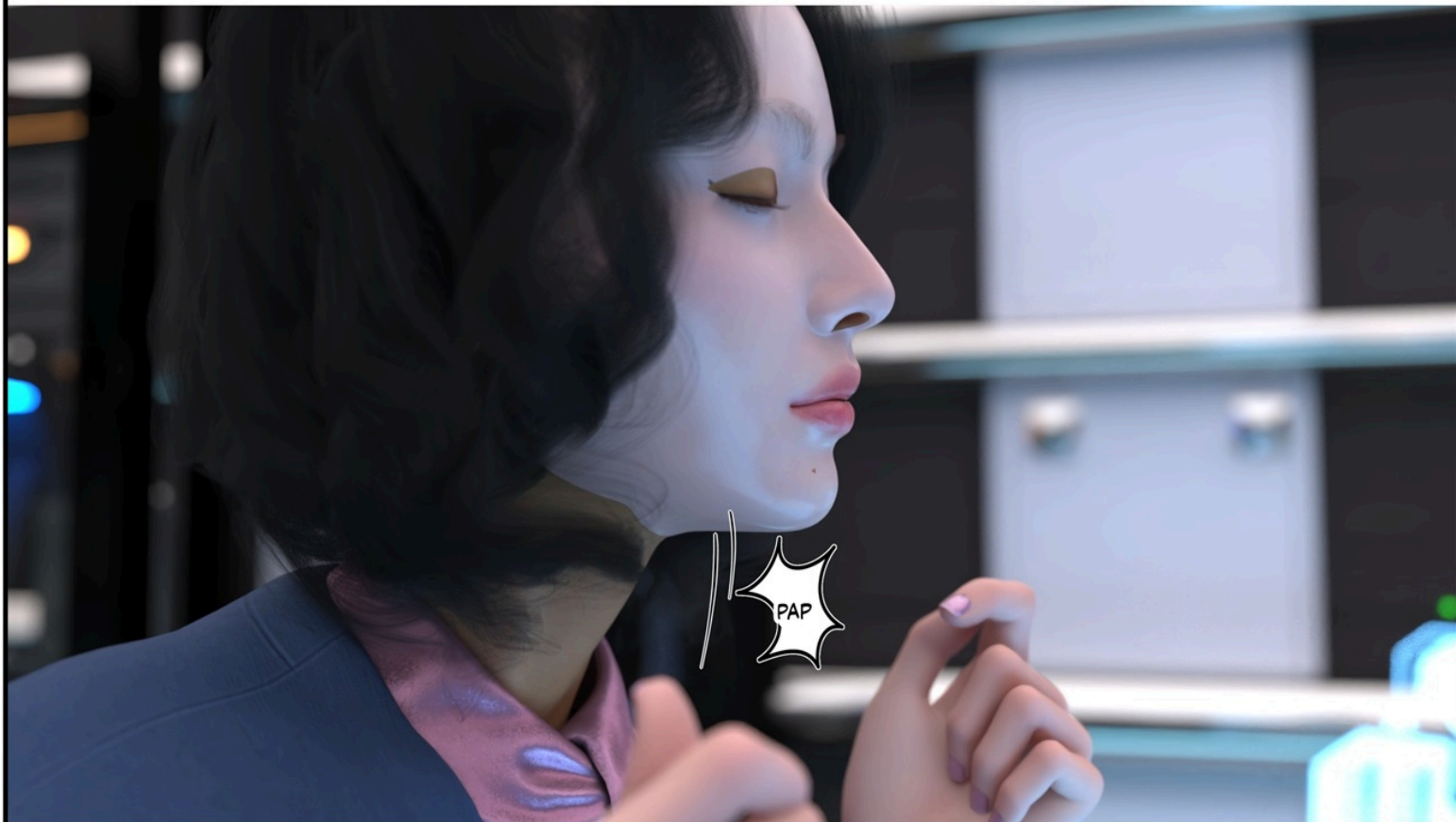
I'VE NEVER USED ONE, BUT
LUCKILY I'VE SEEN MOM APPLY
THEM BEFORE.

KOBAYASHI
MIDORIKO



Pixiv: www.pixiv.net/users/100328105







I-IS THAT IT?

NO, THERE'S ONE FINAL
STEP.

XIAO LIN
LÜZI

THE FINAL
STEP?

..HMM? THE MASK... IS
TIGHTENING?



WHOA

THIS MASK IS ALTERING THE STRUCTURE OF
YOUR FACIAL MUSCLES...



OF COURSE, IT ALSO
MODIFIES THE SKIN TONE
AROUND YOUR FACE.

IS IT OVER?

YES, BUT ALL OF THIS IS TEMPORARY. YOU'LL RETURN TO NORMAL ONCE YOU REMOVE THE MASK. IF YOU WANT PERMANENT TRANSFORMATION, SURGERY IS STILL THE ONLY OPTION.

YOU NOW LOOK EXACTLY LIKE YOUR MOTHER. COMBINED WITH POSSESSING HER ORIGINAL BODY, BIOLOGICALLY, FROM DNA SAMPLES TO HORMONE LEVELS, YOU ARE SU WAN. LIVING AND SOCIALIZING AS 'SU WAN' WILL POSE NO ISSUES WHATSOEVER.



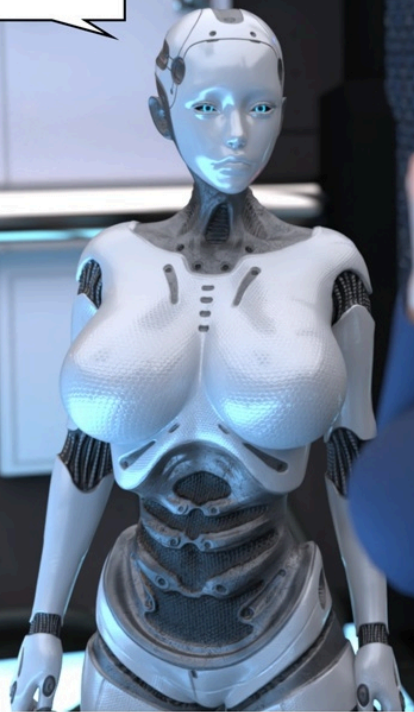
XIAO LIN
LÜZI

I'VE TRULY BECOME MOM
COMPLETELY... EVEN MY VOICE
IS THE SAME.



HE INSTINCTIVELY CLENCHED HIS LEGS
TOGETHER. AN UNFAMILIAR DAMP SENSATION
CAME FROM HIS NEW BODY, AND HE FELT A
SLIGHT WARMTH IN HIS PRIVATE AREA.

(XIAO YU HAS TRULY BECOME
MY EXACT LIKENESS NOW...)



XIAO MO
LÜZI

(AND I CAN ONLY WATCH FROM THE
SIDE AS A ROBOT WHILE HE GRADUALLY
REPLACES ME.)





ROBOT UNIT LW-009 HAS
BEEN ACTIVATED, AWAITING
DESIGNATED OWNER.

JUST AS SU WAN WAS OVERWHELMED
WITH EMOTION, AN IRRESISTIBLE PROGRAM
ENFORCEMENT FORCE SUDDENLY SURGED
FROM HER ROBOTIC BODY.





IT SEEMS THE RECENTLY
DOWNLOADED ROBOT
PROTOCOL HAS TAKEN EFFECT.

ROBOT PROTOCOL?

DUE TO THE ACTIVATION OF THE ROBOT
PROTOCOL, YOU HAVE OFFICIALLY BECOME
ROBOT UNIT LW-009.



XIAO JING
MEIZI

YOUR SON, THE CURRENT MS. SU WAN,
IS NOW YOUR LEGAL OWNER. YOUR
RELATIONSHIP, HOW YOU ADDRESS EACH
OTHER, AND EVEN ALL BEHAVIORS BETWEEN
YOU ARE ENTIRELY UNDER HER CONTROL.
ONCE SHE ISSUES A CLEAR COMMAND, YOU
HAVE NO RIGHT TO RESIST.



COMMAND
RECEIVED

Pixiv: www.pixiv.net/users/100328105

*MASTER, ROBOT UNIT
LW-009 REPORTING TO YOU.



XIAO LIN
LÜZI



MOM... SERIOUSLY, WHY ARE YOU
ACTING LIKE THIS...

THOUGH SAYING THIS, ZHANG XIAOYU,
SEEING THIS CHEAP ROBOT HOUSING HIS
MOTHER'S CONSCIOUSNESS SO OBEDIENTLY
SUBMITTING TO HIM, FELT HIS DESIRE FOR
CONTROL SATISFIED FOR THE FIRST TIME.



THIS SHOULD BE ENFORCED BY THE PROGRAM. NOW, YOU HAVE 100% CONTROL OVER HER. UNTIL YOU GIVE A CLEAR INSTRUCTION, SHE MUST REMAIN IN THIS STATE OF COMPLETE OBEDIENCE.

YOU CAN ISSUE
COMMANDS SIMPLY
BY SPEAKING TO HER.

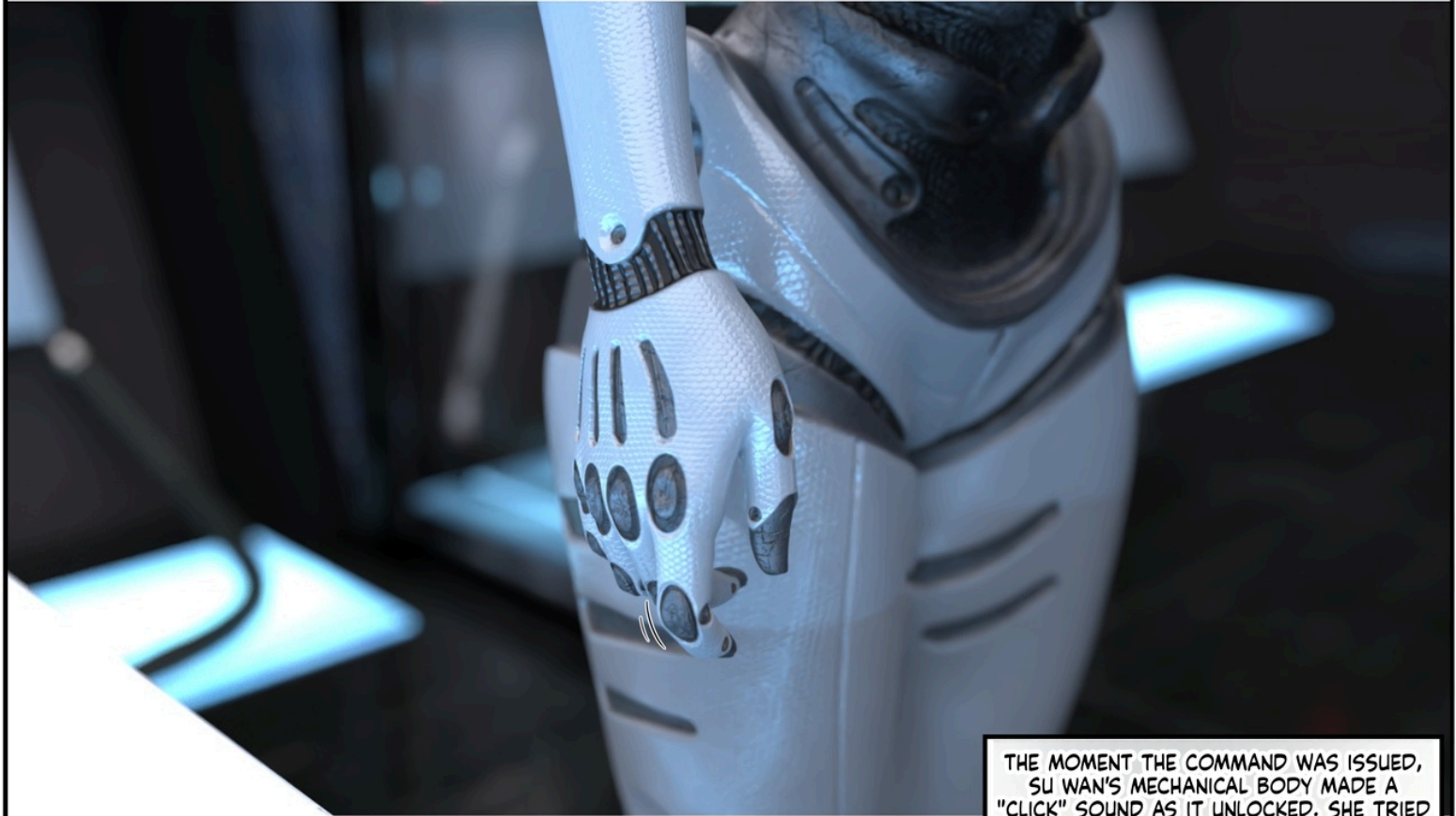
THEN... HOW DO I MAKE HER RETURN
TO NORMAL?

XIAO LIN
LÜZI

ALRIGHT... ROBOT, YOU MAY CONTROL
YOURSELF FREELY AND MOVE AS YOU
WISH.



XIAO LIN
LÜZI



THE MOMENT THE COMMAND WAS ISSUED, SU WAN'S MECHANICAL BODY MADE A "CLICK" SOUND AS IT UNLOCKED. SHE TRIED MOVING HER FINGERS; HER STIFF JOINTS COULD FINALLY MOVE FREELY AGAIN.

JUST NOW... I COULDN'T CONTROL
MYSELF AT ALL... IT WAS JUST LIKE THE
FIRST TIME I PUT ON THE COLLAR...



BECAUSE THE COLLAR SIMULATES THE SIGNAL
A ROBOT RECEIVES WHEN GIVEN A COMMAND.
RIGHT NOW, YOU'VE COMPLETELY BECOME
A ROBOT—YOUR OBEDIENCE TO COMMANDS
WILL BE EVEN STRONGER THAN WHEN
WEARING THE COLLAR.



XIAO MO
LÜZI

DON'T WORRY... MOM, I
WON'T GIVE YOU ANY ORDERS.



HMM...

Pixiv: www.pixiv.net/users/100328105

ALRIGHT, THE ISSUE WITH
THE BODY HAS FINALLY BEEN
TEMPORARILY RESOLVED.



ACCORDING TO THE PLAN WE
DISCUSSED EARLIER, WE'LL MAKE A
MORE ADVANCED BIONIC BODY FOR
MISS SU AS SOON AS POSSIBLE.

THE CHARGER AT YOUR HOME IS NO
LONGER COMPATIBLE, SO WE'LL SEND
SOMEONE TO REPLACE IT LATER.

LET'S GO HOME, MOM.

HMM, I GUESS WE
HAVE NO CHOICE.

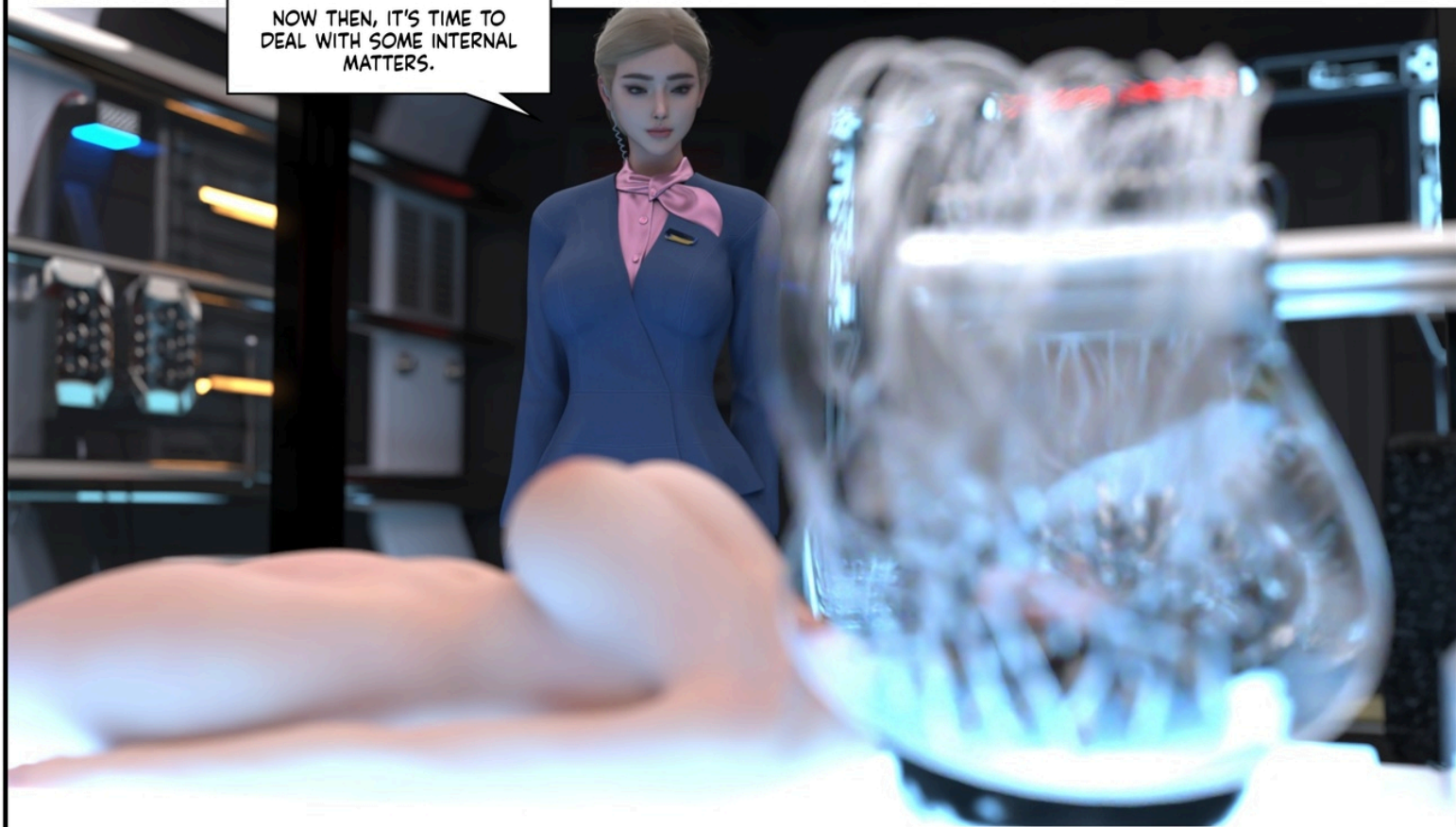
IF YOU HAVE ANY OTHER
ISSUES, PLEASE CONTACT ME
ANYTIME.

AFTER THE TWO LEFT

XIAO MO
LÜZI



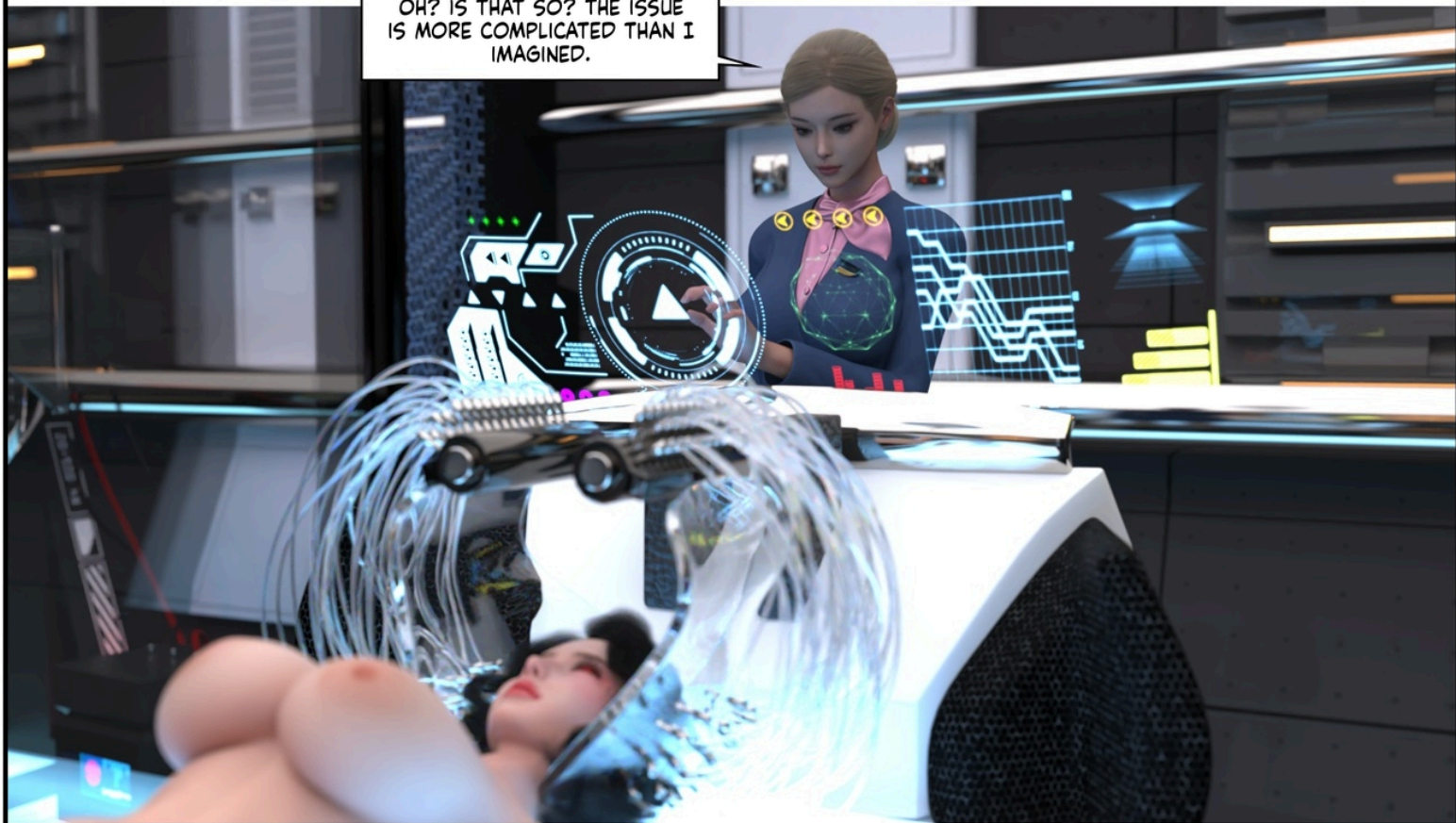
NOW THEN, IT'S TIME TO
DEAL WITH SOME INTERNAL
MATTERS.



A woman with black hair is being styled by two hair dryers. The hair dryers are positioned on either side of her head, blowing air onto her hair. The woman has a neutral expression and is looking slightly to the right. The background is a plain, light-colored wall.

WHY EXACTLY DID YOU
HAVE THAT KIND OF
PROBLEM?

OH? IS THAT SO? THE ISSUE
IS MORE COMPLICATED THAN I
IMAGINED.



IN THAT CASE, THINGS
ARE BECOMING RATHER
INTERESTING.

AFTER RETURNING
HOME

小林綠子
KOBAYASI



Pixiv: www.pixiv.net/users/100328105

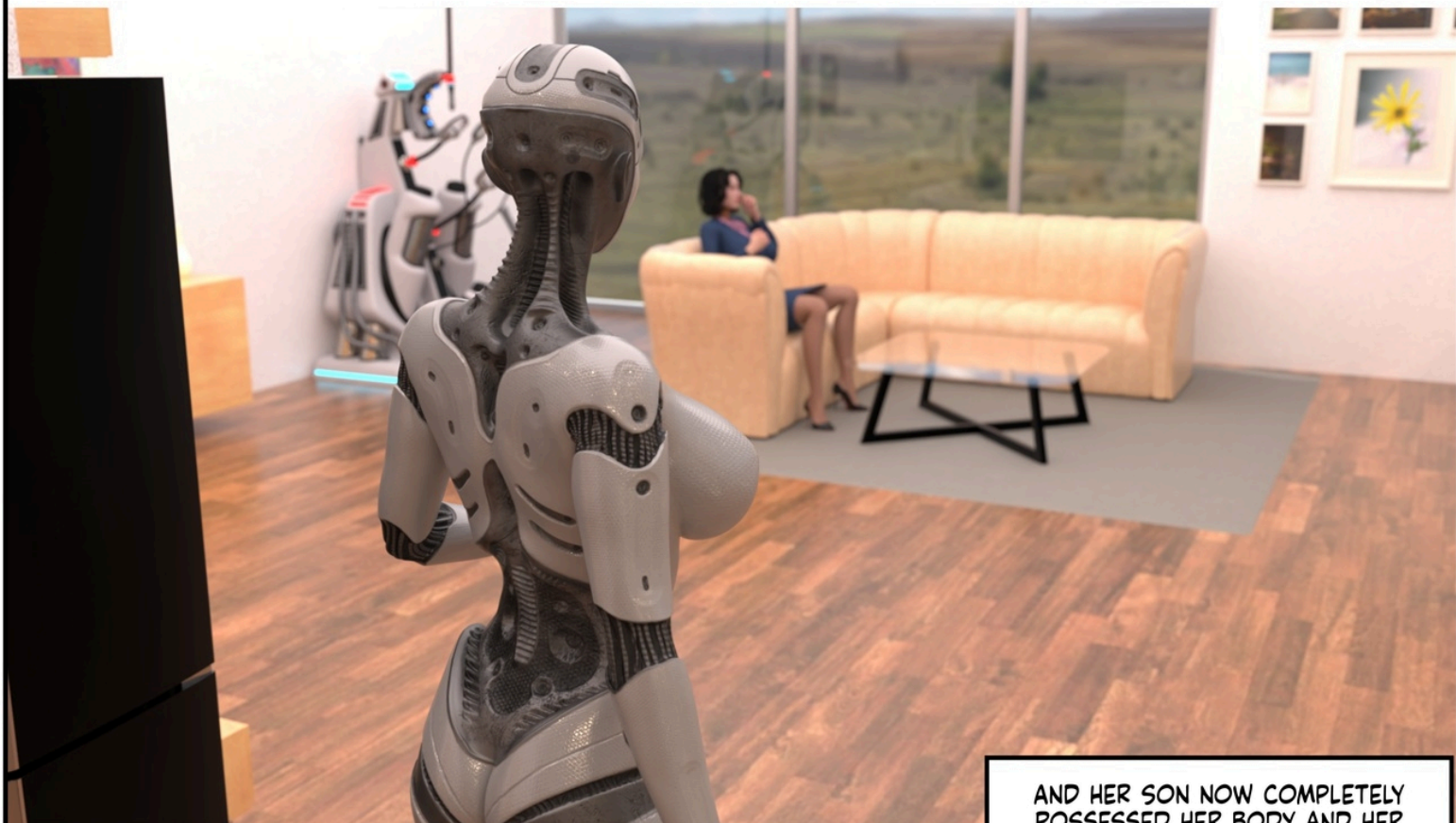
THE FIRST THING SU WAN DID UPON RETURNING HOME WAS TO SCAN AND UPLOAD THE ROOM DATA ACCORDING TO HER BUILT-IN ROBOT PROTOCOL. FROM NOW ON, WITHOUT PERMISSION, SHE CANNOT STEP OUTSIDE THIS ROOM.



AFTER FINISHING ALL THAT, SHE LOOKED AT HER SOMEWHAT OUTDATED ROBOT BODY AND COULDN'T HELP BUT REFLECT ON HOW, IN JUST TWO SHORT DAYS, HER LIFE HAD UNDERGONE SUCH A TREMENDOUS CHANGE. STANDING IN HER HOME NOW FELT LIKE A LIFETIME AGO.



XIAO LIN
LÜZI



AND HER SON NOW COMPLETELY
POSSESSED HER BODY AND HER
APPEARANCE.

UGHHH...



A WOMAN'S CHEST IS WAY TOO
HEAVY—HOW DID MOM ENDURE
THIS?



AND HIGH HEELS TOO—WALKING
IN THEM IS SO DIFFICULT...



XIAO JING
LÜZI

THE TIPS OF MY STOCKINGS ARE
SOAKED WITH SWEAT.

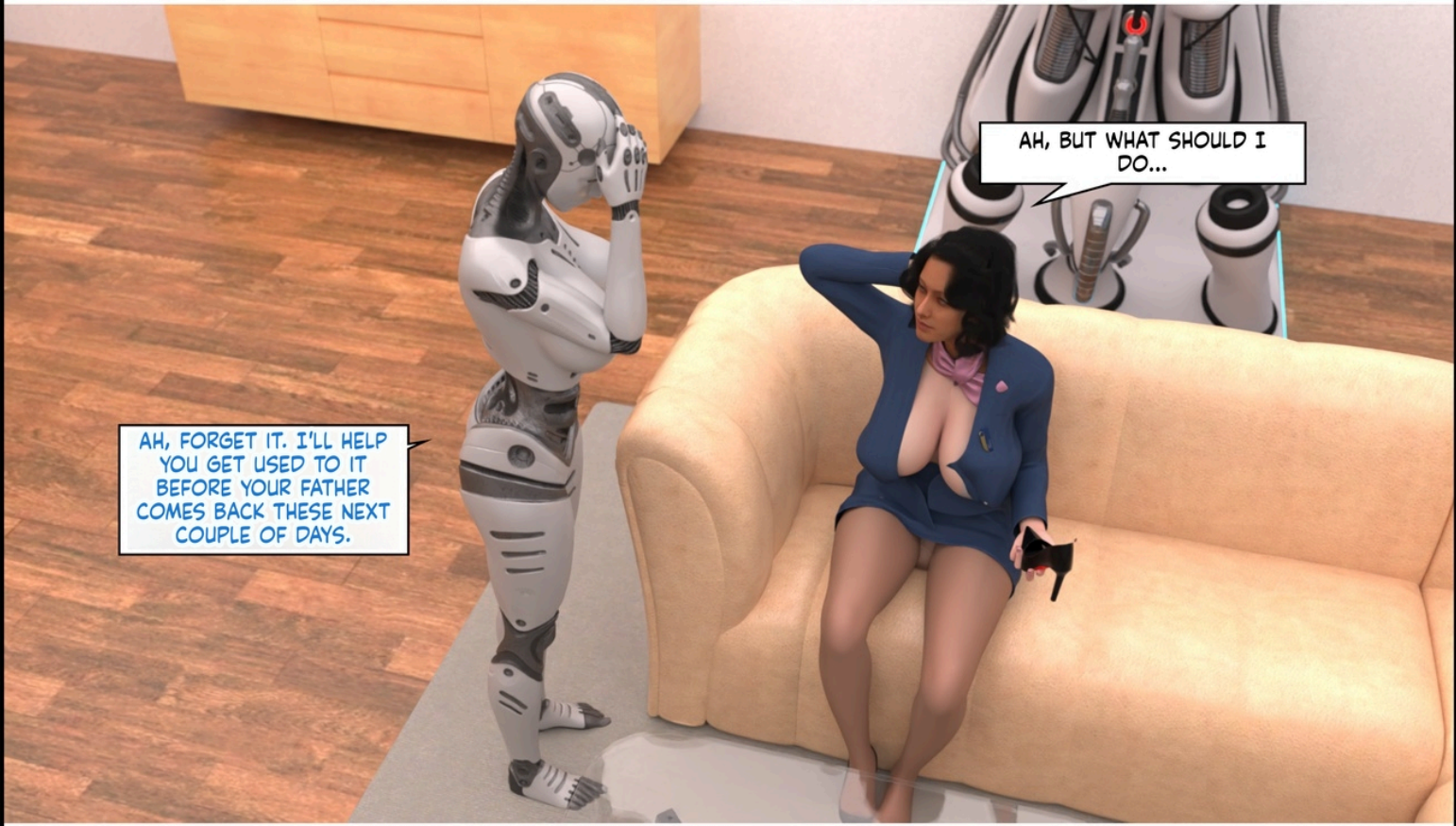
XIAO YU...

HUH? WHAT IS IT, MOM?

NOW THAT YOU'RE A
WOMAN, AT LEAST ACT
LIKE ONE.

OTHERWISE, EVEN IF YOU LOOK
EXACTLY LIKE ME, YOU'LL BE
EXPOSED IN FRONT OF YOUR
FATHER.





AH, FORGET IT. I'LL HELP
YOU GET USED TO IT
BEFORE YOUR FATHER
COMES BACK THESE NEXT
COUPLE OF DAYS.

AH, BUT WHAT SHOULD I
DO...

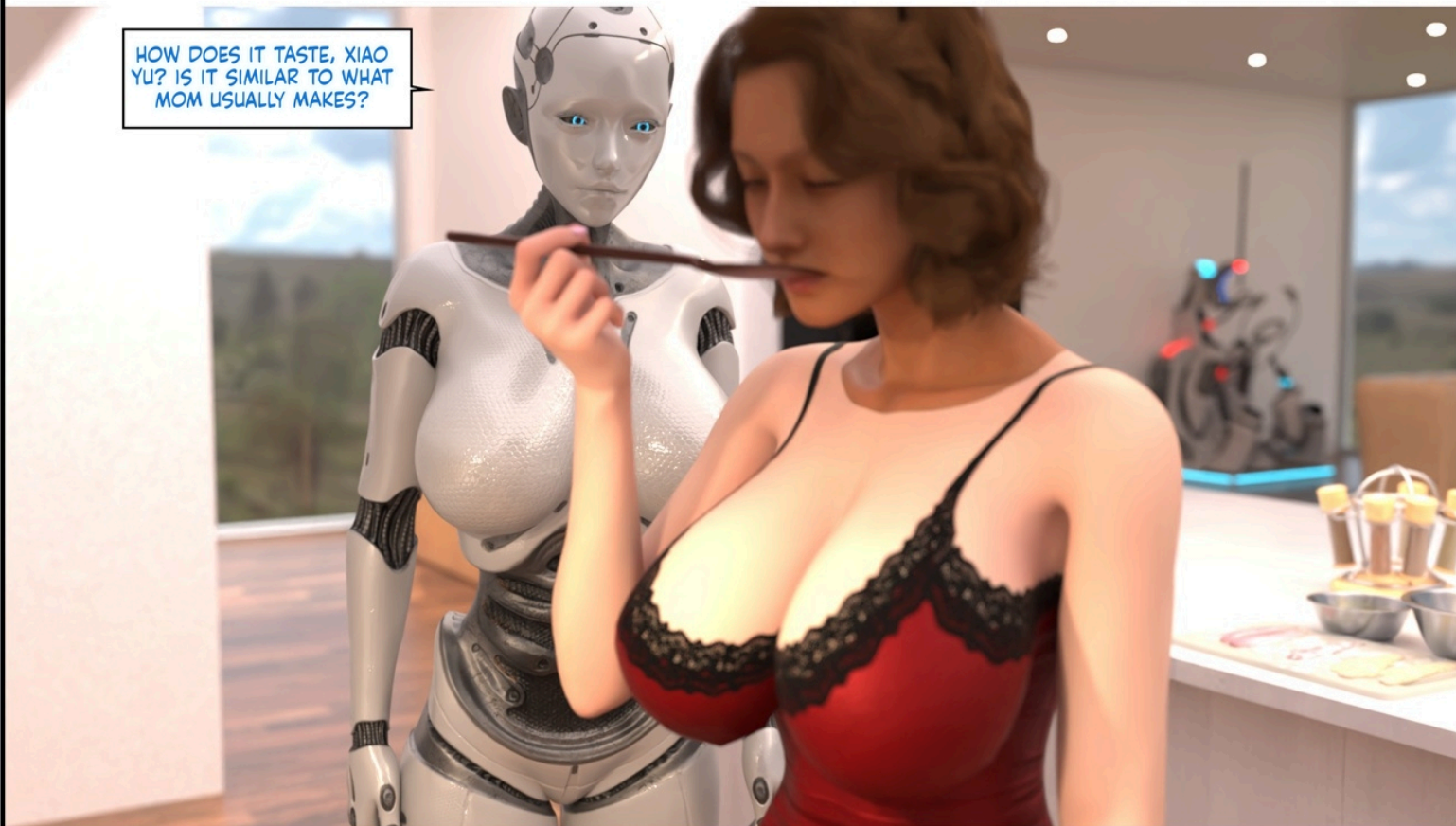
AND SO, FOR THE NEXT TWO DAYS, THE MOTHER AND SON—OR RATHER, THE ROBOT MOTHER AND THE SON WEARING HIS MOTHER'S BODY—FAMILIARIZED THEMSELVES WITH THEIR NEW FORMS WHILE ALONE AT HOME.



LIKE THIS?

YES, LIKE THAT, RELAX
YOUR WRIST WHEN
HOLDING THE KNIFE.

HOW DOES IT TASTE, XIAO
YU? IS IT SIMILAR TO WHAT
MOM USUALLY MAKES?



KOBAYASHI
MIDORIKO

HMM, IT REALLY IS EXACTLY THE SAME
TASTE.

GREAT...

Pixiv: www.pixiv.net/users/100328105

KOBAYASHI
MIDORIKO

I'VE FINALLY MANAGED TO TEACH YOU BEFORE YOUR FATHER COMES BACK. HE ALWAYS ASKS ME TO MAKE THIS DISH WHEN HE RETURNS, SO AS LONG AS YOU FOLLOW TODAY'S STEPS, HE WON'T SUSPECT A THING.

UNDERSTOOD,
MOM.

Pixiv: www.pixiv.net/users/100328105



BUT, MOM, THERE'S ONE MORE
THING.

YES, WHAT IS IT, XIAO
YU?

KOMORI
MIDORIKO

WHEN DAD COMES BACK, IF YOU
KEEP CALLING ME "XIAO YU" OR
"SON," IT'LL BE EASY TO GET
EXPOSED, RIGHT?

YOU SHOULD PROBABLY START
GETTING USED TO CALLING ME
"MISTRESS" INSTEAD.

AH... UM...

Pixiv: www.pixiv.net/users/100328105



IT FEELS A BIT STRANGE.
I'M NOT SURE IF I CAN
GET USED TO IT...

(MISTRESS...? EVEN THOUGH I GOT
EXCITED BEFORE WHEN PRETENDING TO BE
A MECHANICAL MAID... BUT NOW, CALLING
XIAO YU "MISTRESS"... DOES THIS MEAN I'LL
TRULY BECOME HIS POSSESSION?)

WELL THEN, HOW ABOUT WE USE A
COMMAND TO FORCIBLY CHANGE THE WAY
YOU ADDRESS ME? YOU CAN'T RESIST ANY
CLEARLY ISSUED COMMAND, RIGHT?



HUH? A COMMAND? DO WE REALLY
NEED THAT...? I COULD JUST STAY
QUIET WHEN YOUR DAD COMES
BACK...

ROBOT LW-009, FROM NOW ON,
REFER TO ME AS "MISTRESS," REFER
TO FATHER AS "MASTER," AND
REFER TO YOURSELF UNIFORMLY AS
"ROBOT."



BUT ZHANG XIAOYU SUDDENLY INTERRUPTED
HER, HIS EYES SPARKLING MISCHIEVOUSLY
AS HE BEGAN ISSUING COMMANDS.

KOMORI
MIDORIKO



*COMMAND RECEIVED,
MISTRESS

JUST NOW... THAT
FEELING AGAIN...





MISTRESS... ROBOT JUST
NOW...



AH... THIS IS...

AFTER THE SETTINGS WERE COMPLETE, WHEN SHE TRIED TO SPEAK, SHE DISCOVERED THAT EVEN IF SHE WANTED TO CALL OUT TO XIAO YU, HER TONGUE WOULDN'T OBEY HER AT ALL.

HAHA, INDEED, THIS IS SAFER, RIGHT? YOU
LOOK JUST LIKE A REAL ROBOT NOW.

M-MAYBE...



MISTRESS... MASTER MIGHT BE
RETURNING IN THE NEXT FEW DAYS.
ROBOT SUGGESTS YOU START
WEARING THE MASK FROM NOW ON.

MM-HMM, GOT
IT~

AT NIGHT, MASTER
BEDROOM





MMM~

KOBARI
MIDORIKO



IS THIS REALLY MY BODY NOW?

SO SEXY...



AH~ THIS
FEELING~



EVEN JUST A LIGHT TOUCH FEELS SO
GOOD... IF I WERE TO INSERT IT...



AAAH~



MY NIPPLES HAVE GOTTEN SO
HARD...



MMM~ SO FULL~ MOM'S
NIPPLES... SO SENSITIVE~

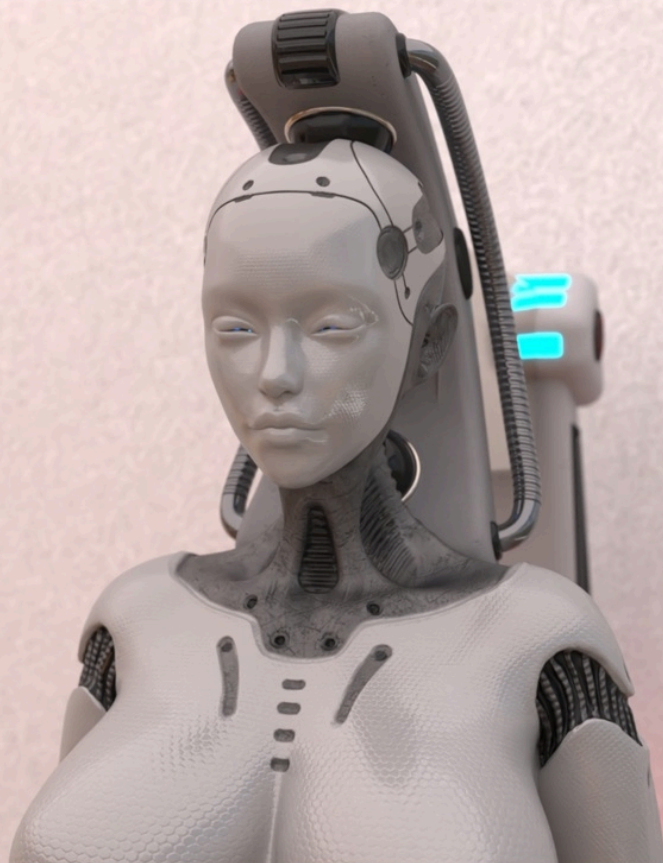
AH, NO... A WOMAN'S BODY IS SO
AMAZING... I REALLY WANT TO BE
PENETRATED... I WANT TO MAKE LOVE...



DOWNSTAIRS

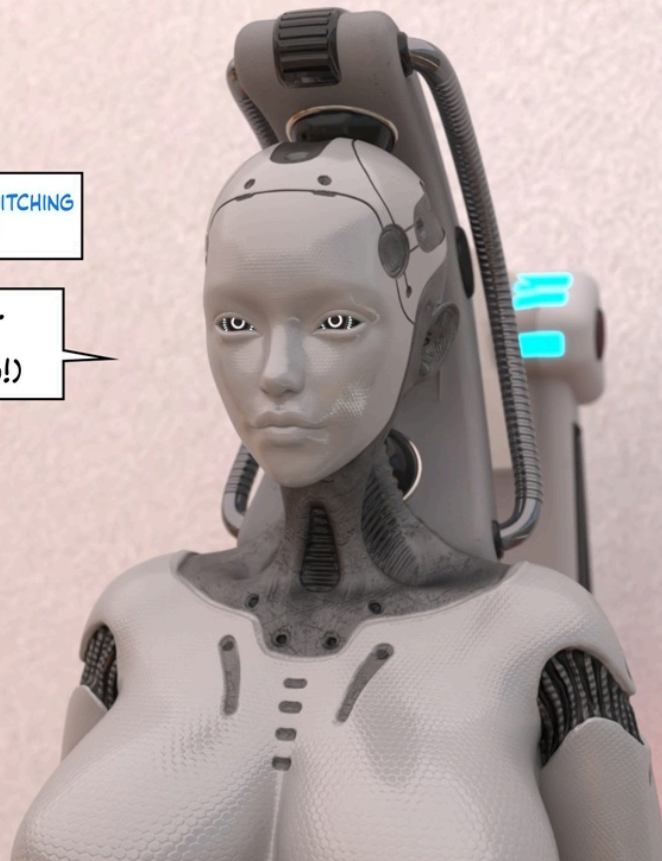


SU WAN, CURRENTLY CHARGING AND
IN HIBERNATION, SUDDENLY RECEIVES
AN INSTRUCTION



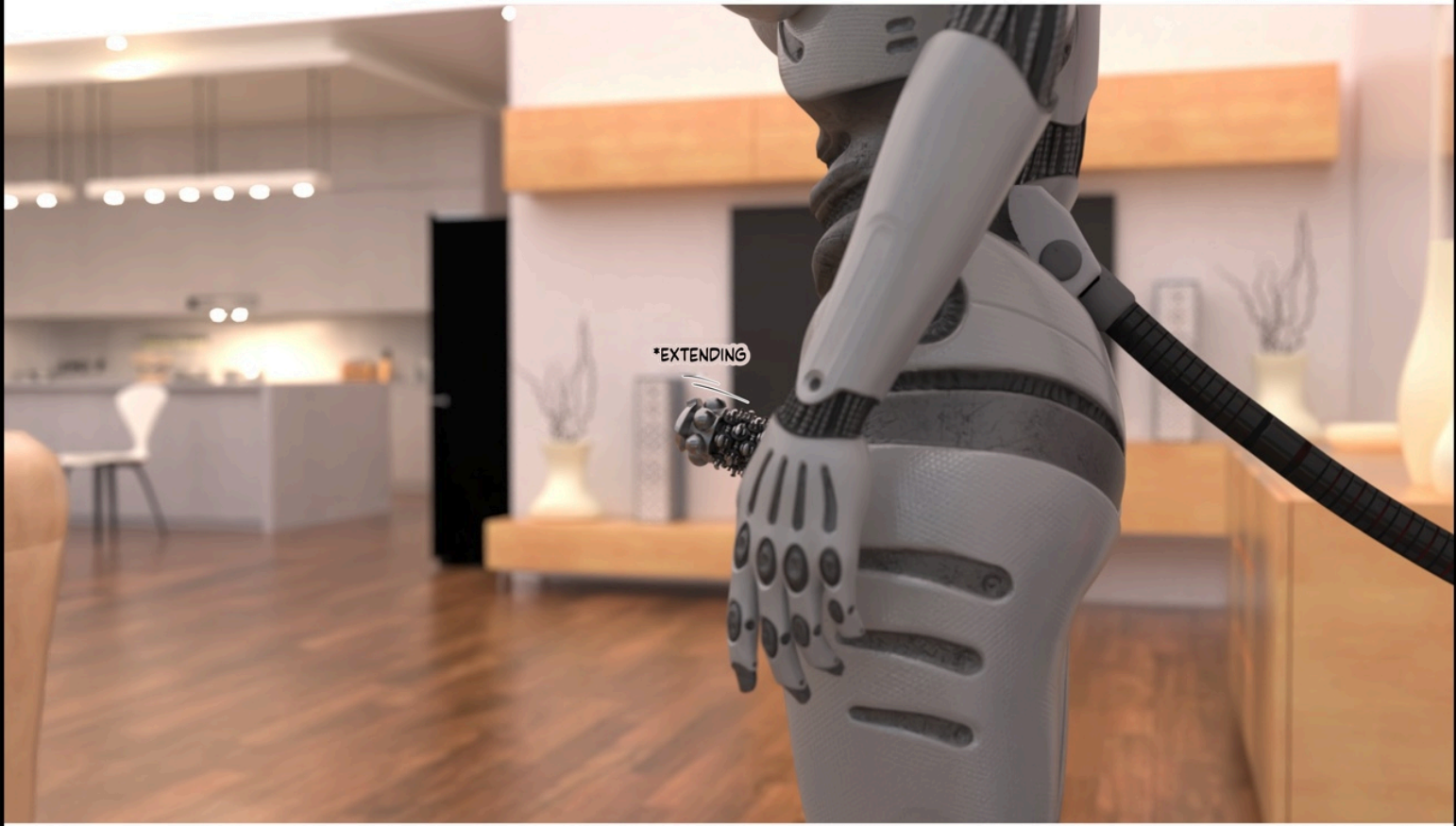
*INSTRUCTION RECEIVED, SWITCHING
TO SEX DOLL MODE

(WHAT? SEX DOLL
MODE?! I JUST
STARTED CHARGING!)



KOBARI
MIDORIKO

*EXTENDING





*MALE ORGAN MODULE
ACTIVATION COMPLETE



*TERMINATING CHARGE, PROCEEDING
TO MASTER BEDROOM.

(WHAT THE HELL? MALE
ORGAN MODULE?! WHAT IS
THAT THING?!)

KOBARI
MIDORIKO



*STOP

KOBARI
MIDORIKO




WHOA! YOU WERE
CHARGING—HOW DID YOU
GET UP HERE?

*MADAM, SEX DOLL MODE
STANDING BY, READY FOR
INSERTION AT ANY TIME.

NO RESPONSE? DID SHE ENTER COMMAND MODE
AGAIN?

PHEW, SCARED ME—THOUGHT
SHE'D CATCH ME MASTURBATING.

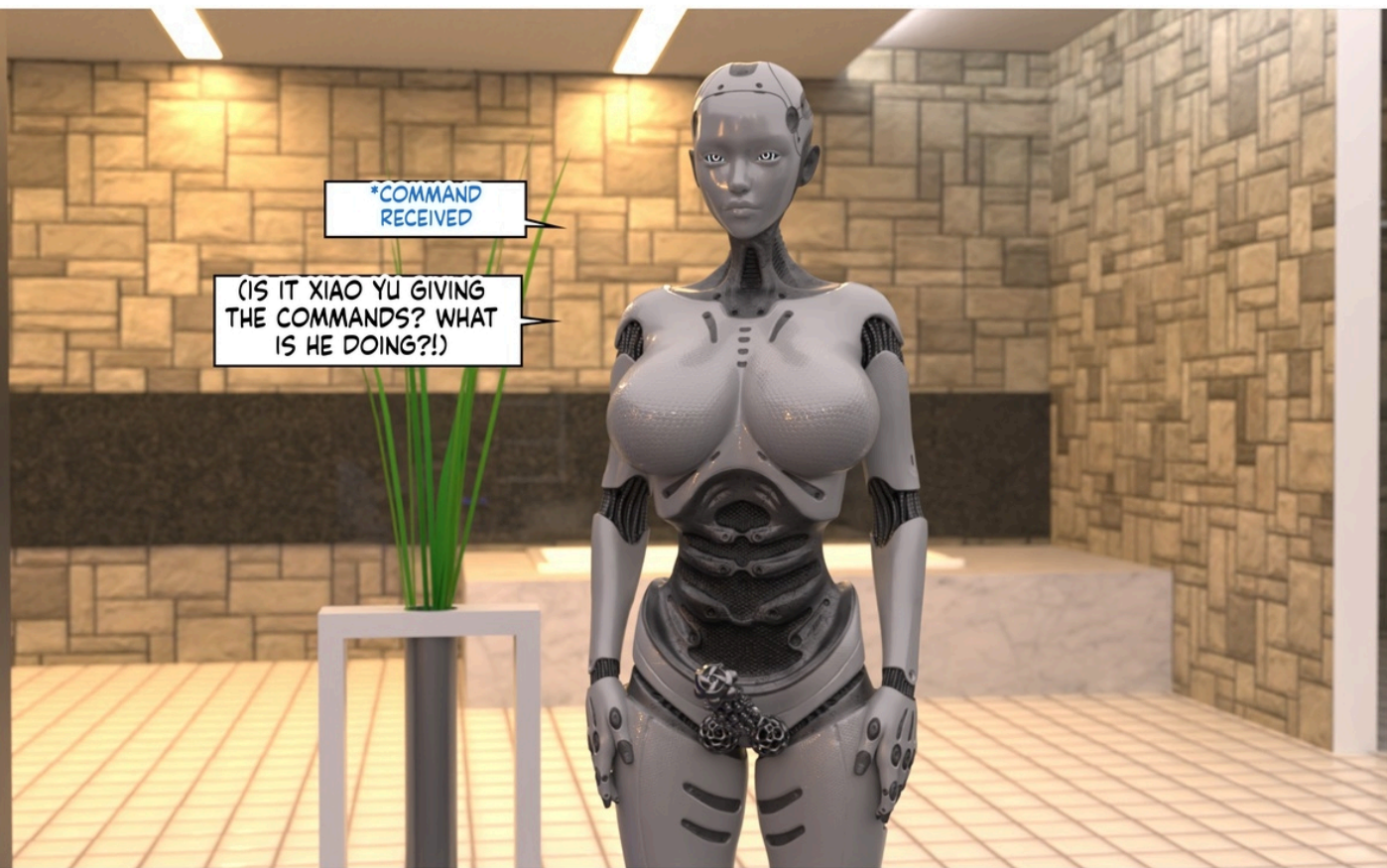




BUT, IN COMMAND MODE, SHE SHOULDN'T
KNOW, RIGHT?



IF THAT'S THE CASE, COME HERE-GET
CLOSER.



*COMMAND RECEIVED

(IS IT XIAO YU GIVING THE COMMANDS? WHAT IS HE DOING?!)

SEX DOLL MODE-SO
THIS FUNCTION ACTUALLY
EXISTS?



(OH MY GOD, WHY CAN
I FEEL HIS FEET?!)

PERFECT TIMING...

XIAO
MOLVZI

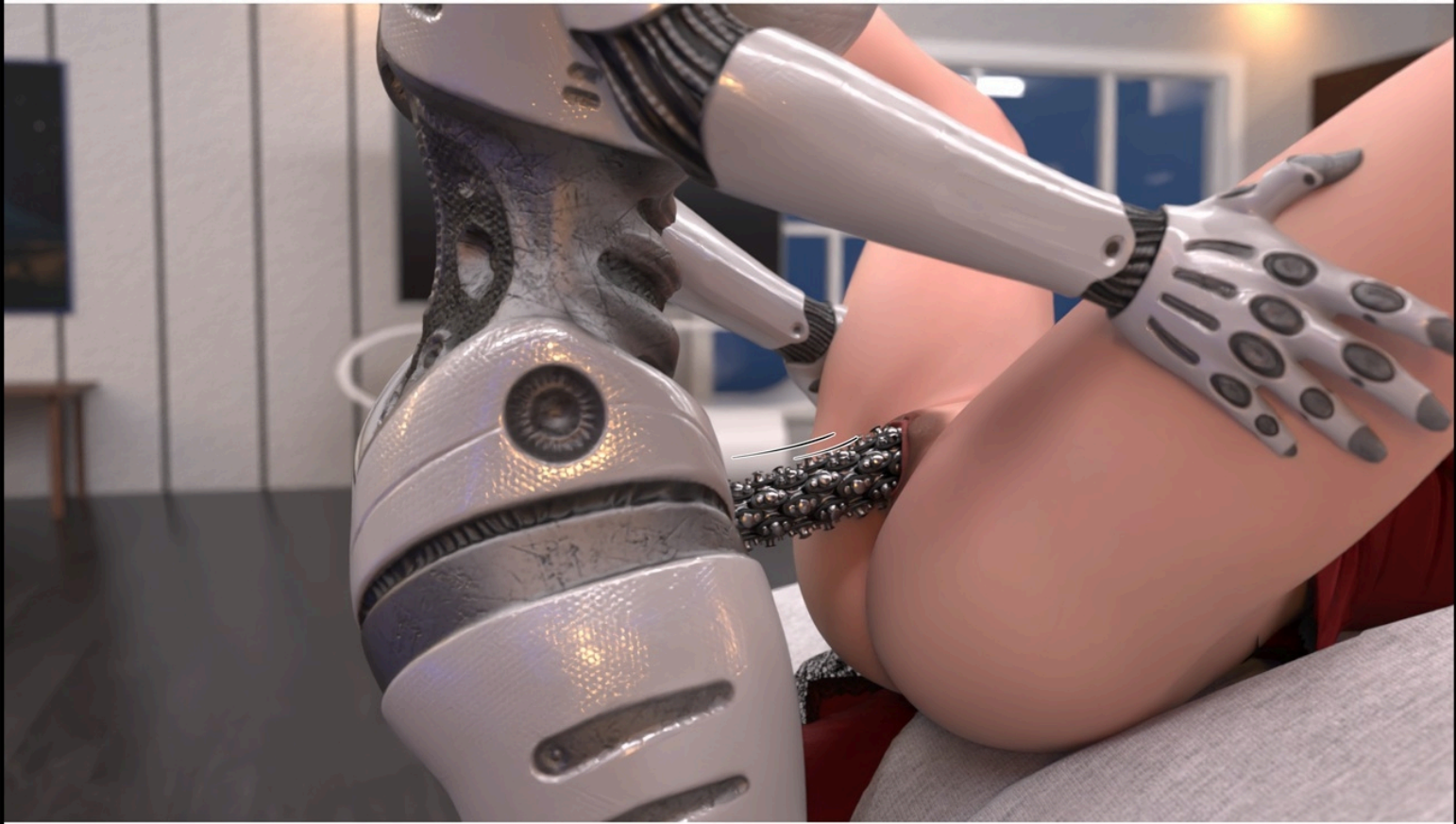
SINCE THAT'S THE CASE, FULFILL YOUR
DUTY FRO ME THEN~ SATISFY YOUR
MISTRESS~



*INSERTION COMMAND
RECEIVED. MISTRESS HAS
APPROVED INSERTION.



XIAO LIN
LVZI



AH~ SO THICK~



XIAO JING
MEIZI

SO GOOD, THE FEELING
DOWN THERE IS AMAZING,
GO... GO FASTER.



Pixiv: www.pixiv.net/users/100328105

*INSERTION
COMMAND RECEIVED.
INCREASE THRUSTING
SPEED.

(MY MECHANICAL COCK CAN ACTUALLY FEEL THE
WARMTH AND TIGHTNESS INSIDE HIS BODY—SO
GOOD.

AH~

XIAO JING
LVZI

SU WAN'S MECHANICAL BODY THRUST POWERFULLY AND PRECISELY, HITTING THE MOST SENSITIVE SPOT INSIDE ZHANG XIAO YU'S CURRENT BODY WITH EVERY STROKE. NOT ONLY THAT, IT COULD ALSO VIBRATE AND ROTATE, ITS SURFACE PROTRUSIONS RUBBING AGAINST THE INNER WALLS, PRODUCING LEWD, WET SOUNDS.



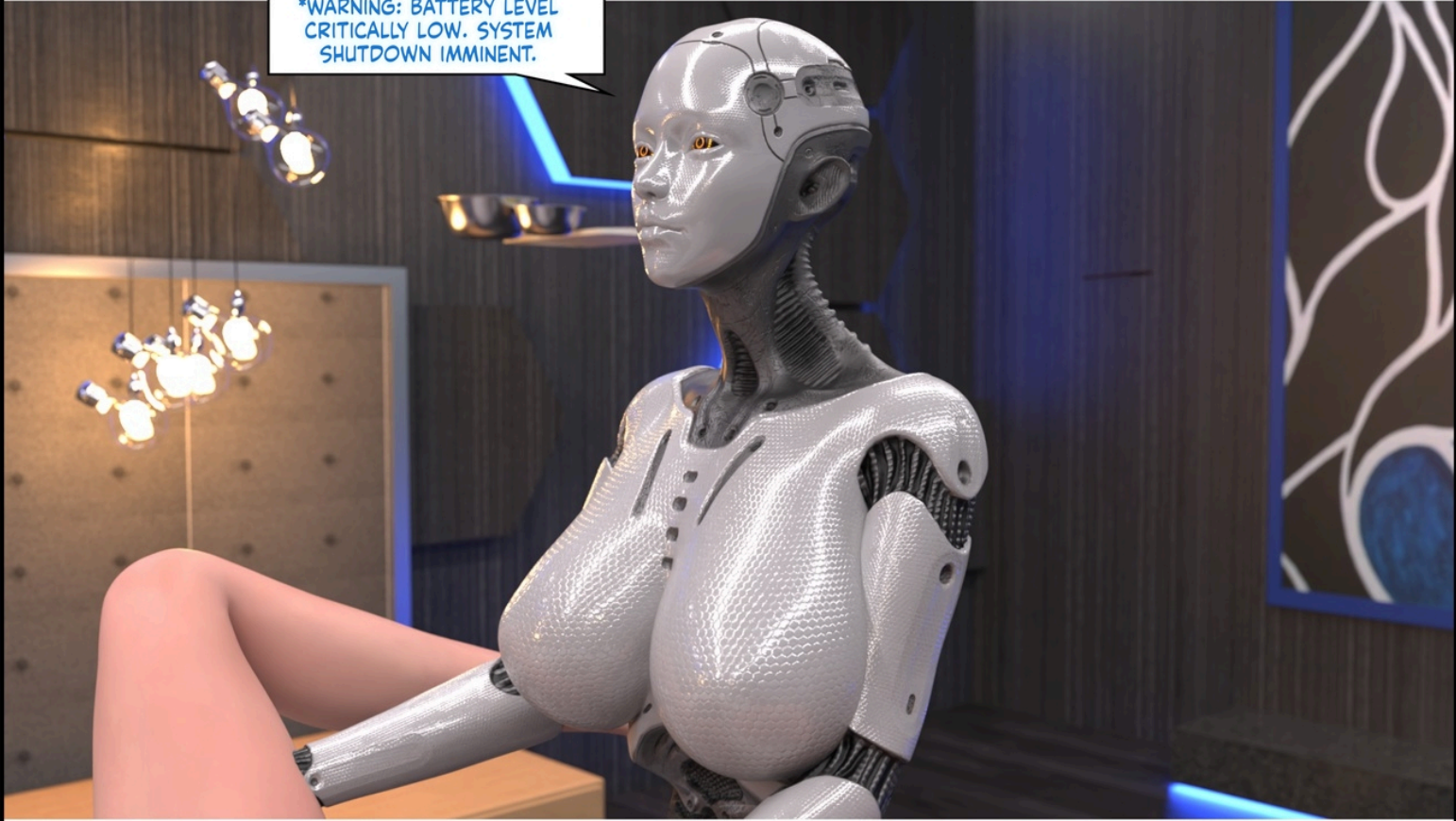
SO GOOD, BEING A WOMAN FEELS INCREDIBLE~

*WARNING: DETECTED CHANGES IN VAGINAL
INTERNAL PRESSURE. ORGASM CONFIRMED.
PREPARING TO RELEASE ARTIFICIAL SEMEN.

(MY OWN LITTLE PUSSY FEELS SO GOOD...)

AHHHH~

*WARNING: BATTERY LEVEL
CRITICALLY LOW. SYSTEM
SHUTDOWN IMMINENT.



XIAO LIN
LVZI

WHOA!



WHY DID IT SHUT DOWN SO
SUDDENLY? HOPE IT DOESN'T
GET DAMAGED FROM THE
FALL.



XIAO LIN
LVZI

BUT SERIOUSLY, I'M
SHOCKED—IT EVEN HAS
ARTIFICIAL SEMEN...



HMM, NOW I'M STARTING TO
WONDER WHAT A REAL MAN'S
COCK WOULD FEEL LIKE...

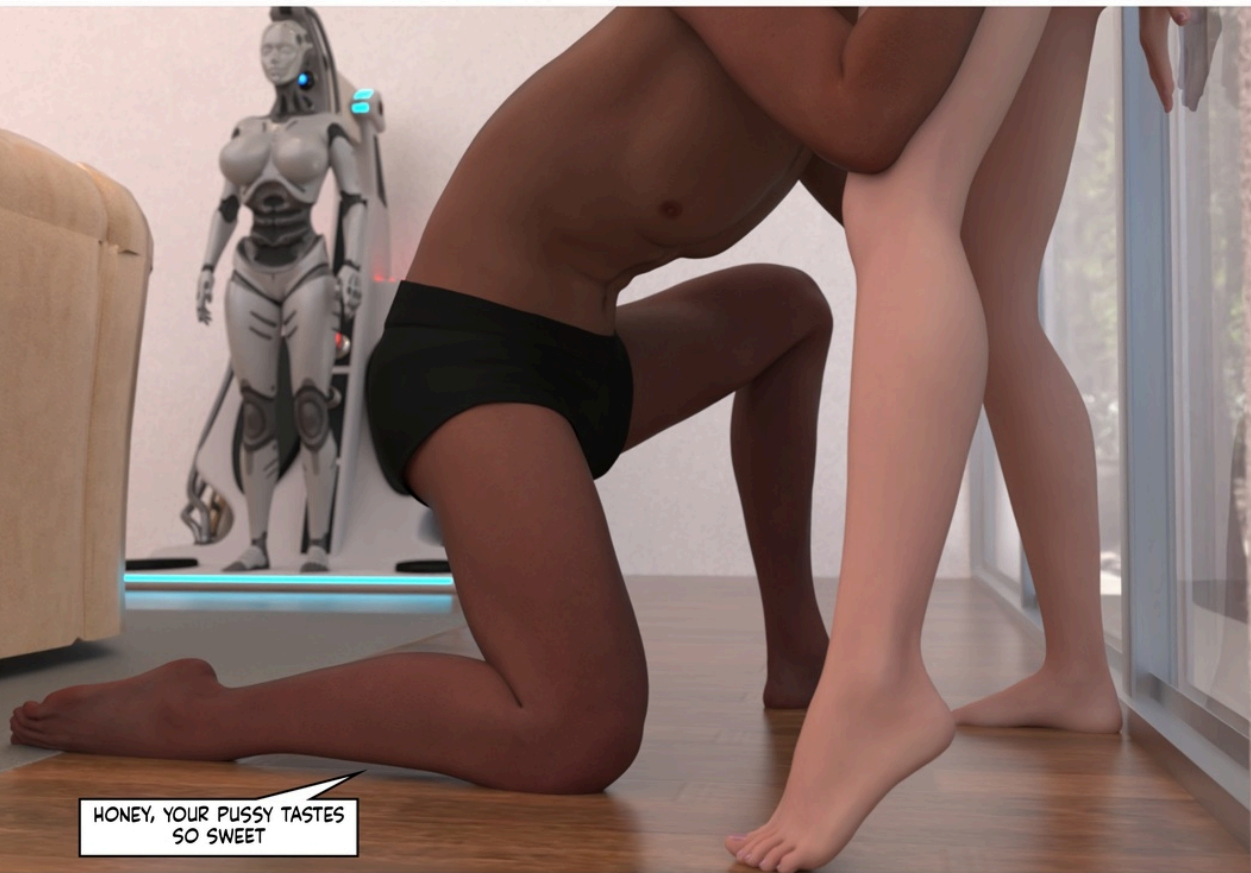


BUT FIRST THINGS FIRST
-WE NEED TO GET YOU
PLUGGED IN TO RECHARGE.



SOME TIME
LATER

XIAO LIN
LVZI



HONEY, YOUR PUSSY TASTES
SO SWEET

Pixiv: www.pixiv.net/users/100328105

AH~



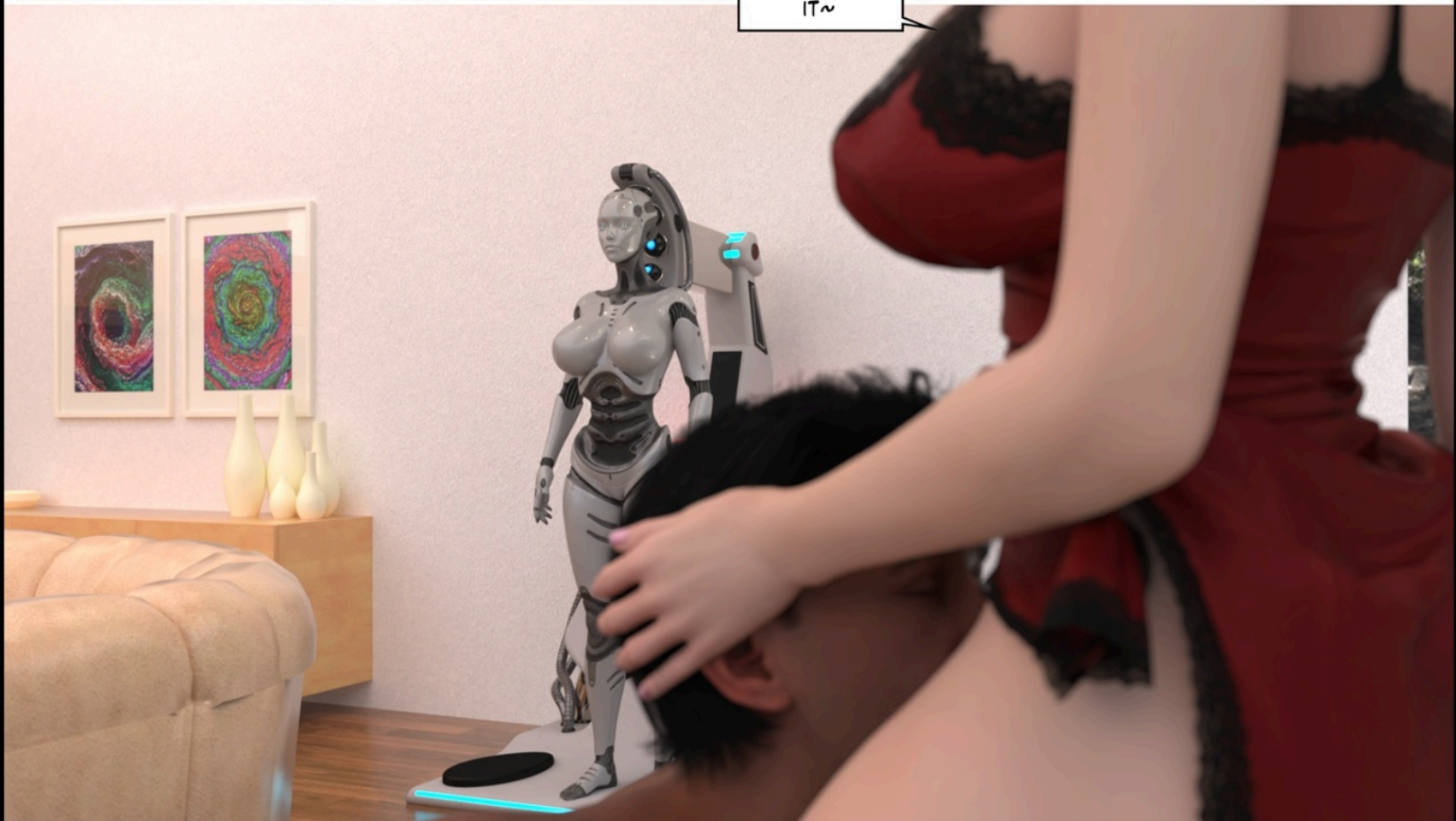
AH... HONEY, YOUR TONGUE FEELS SO GOOD...

YOU'RE LICKING ME SO MUCH I CAN'T TAKE IT ANYMORE...



HONEY, I HAVE TO LEAVE AGAIN THIS
AFTERNOON—CAN'T I JUST GET MY FILL
OF YOUR LITTLE CLAM FIRST?

AH~ STOP
IT~





(WHAT? HE'S LEAVING AGAIN THIS
AFTERNOON? A WEEK?! I WAS OUT COLD
FOR A WHOLE WEEK?)



(WHAT ARE THEY
DOING...?)

SU WAN WANTED TO MOVE, BUT
FOUND HERSELF STILL IN "STANDBY
MODE," UNABLE TO LIFT EVEN A
SINGLE FINGER, FORCED TO WATCH
HELPLESSLY LIKE A MERE OBJECT.

HONEY... AGAIN? MY DOWNSTAIRS HAS
BEEN SWOLLEN FROM YOUR POUNDING
THESE PAST FEW DAYS...



DON'T YOU LIKE THAT YOUR
HUSBAND'S STILL SO STRONG IN
MIDDLE AGE?

OH COME ON... HOW
COULD THAT BE? OF
COURSE I LIKE IT, HONEY~



LIKE WHAT? SAY IT OUT LOUD FOR DADDY
TO HEAR

I LIKE IT... I LIKE YOUR BIG THICK
COCK, HONEY...



GOOD GIRL, MY
WIFE

AHHHH~



MMM~ SO GOOD,
HONEY~

AS THE COCK THRUST INSIDE HER, ZHANG XIAOYU LET OUT A SWEET MOAN, SUPPORTING HERSELF ON TREMBLING LEGS WHILE HER WHOLE BODY ROCKED BACK AND FORTH FROM THE IMPACT, HER BREASTS BOUNCING WILDLY.

THESE PAST FEW DAYS SHE HAD PERFECTLY PLAYED THE ROLE OF A WIFE REUNITED WITH HER HUSBAND, TEASINGLY RESISTING YET PASSIONATELY TAKING EVERYTHING FROM HER "HUSBAND" UNTIL HE WAS COMPLETELY DRAINED.



MMM~ AH~

ALTHOUGH SU WAN'S MECHANICAL COCK
COULD VIBRATE AND EVEN ROTATE,
COMPARED TO ROBOTS, THE WARMTH
OF A REAL BODY IN EMBRACE AND THE
FLIRTATION BEFORE SEX WERE FAR
BETTER AT STIMULATING HER NEW SENSES,
IMMERSING HER DEEPER INTO HER NEW
ROLE.

DEEPER, HONEY~



(XIAOYU... HE... HE'S ACTUALLY... SO SKILLED.
JUST HOW MANY TIMES HAVE THEY DONE IT
THESE PAST FEW DAYS?)

HONEY, YOU'RE AMAZING, I LOVE
YOU SO MUCH~



WAIT, HONEY, THE ROBOT
SEEMS TO BE CHARGED...
MAYBE WE SHOULD... GO TO
THE BEDROOM.



UGH, WHO CARES ABOUT
SOME STUPID ROBOT? WHY
BOTHR WITH IT, HONEY?



OH COME ON, AM I
REALLY THAT SHY?

SHY? YOU'RE SO CUTE,
HONEY.

OH YOU! YOU'RE SUCH A
BAD MAN, HONEY!



WHAT ARE YOU DOING? THE
ROBOT MIGHT RECORD IT.

LET IT RECORD. WHEN I'M
AWAY, YOU CAN WATCH
IT TO SATISFY YOUR
CRAVINGS.



AHHHH~



I CAN'T TAKE IT ANYMORE, FATHER-
IN-LAW, I'M OVERWHELMED, I'M
BREAKING DOWN



AH, HONEY, I'M ABOUT TO
COME,

MM, LET'S GO TOGETHER,
DEAR~



AAAAAH~



IN THE AFTERNOON, AFTER SU WAN AND ZHANG
XIAOYU WERE FINALLY ALONE IN THE ROOM, SU
WAN WAS AT LAST RESTORED TO HER FREEDOM.



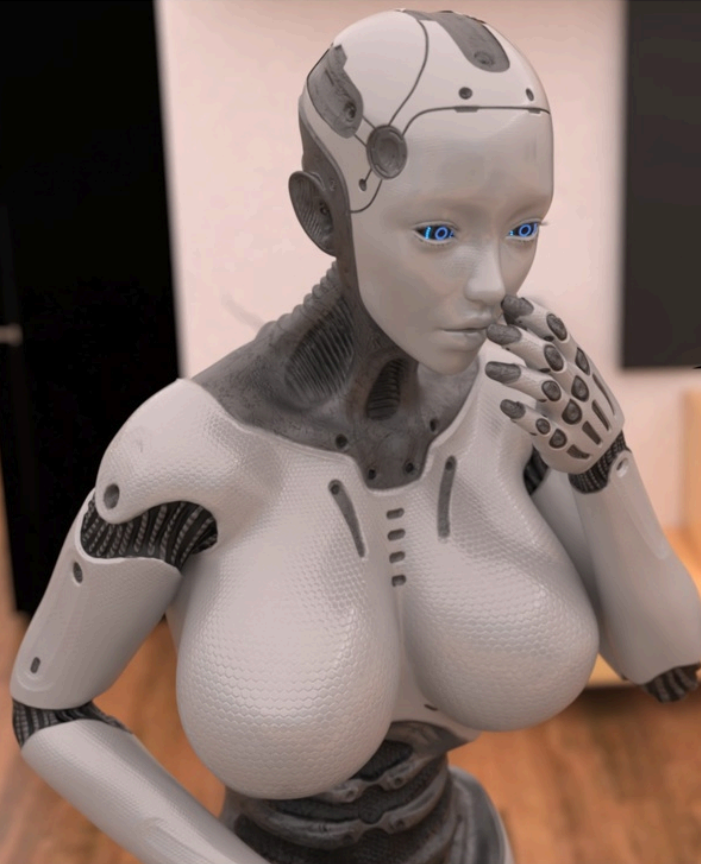


WHY DID YOU SET ME TO SLEEP
MODE FOR A WHOLE WEEK?!

OOPS... IT WAS A MISTAKE... I MEANT
TO PUT YOU ON STANDBY FOR ONE
DAY, BUT ACCIDENTALLY SET IT TO
LONG-TERM HIBERNATION...

WHAT EXACTLY DID YOU TWO
DO?

IT'S NOTHING... YOU SAW IT YOURSELF
JUST NOW, RIGHT? JUST WHAT A WIFE
SHOULD DO.



XIAOYU... HOW COULD YOU
DO THIS?!


YOU SAID BEFORE YOU WOULDN'T
CONTROL ME... YET YOU
STILL GAVE ME ALL SORTS OF
COMMANDS

NO, I CAN'T LET THIS
CONTINUE. WE NEED TO GO
FIND RENA RIGHT AWAY.

NOW YOU'RE BLAMING ME? IF YOU HADN'T BEEN PLAYING WITH ALL THOSE WEIRD THINGS, WOULD WE EVEN BE IN THIS MESS? I'VE BEEN WORKING SO HARD TO ACT, ALL TO KEEP FATHER FROM NOTICING ANYTHING SUSPICIOUS!



KOMORI
MIDORIKO



AND MOM, YOU NEED TO FACE REALITY
-YOU'RE A ROBOT NOW. EVEN IF
YOU GET A BODY THAT LOOKS MORE
HUMAN, YOU'RE STILL JUST A ROBOT.

EVEN SO... I CAN'T KEEP
LIVING LIKE THIS FOREVER.

Pixiv: www.pixiv.net/users/100328105

SIGH, YOU'RE
IMPOSSIBLE...

FINE FROTHEN, I'LL TAKE
YOU TO SEE RENA AGAIN.

INSIDE THE COMPANY
LABORATORY

WE UNDERSTAND YOUR
REQUEST CLEARLY...

KOI IMOUTOKO



HOWEVER
WHAT?

AS I MENTIONED EARLIER, CREATING
A REALISTIC BIOLOGICAL BODY WILL
STILL TAKE SOME TIME.

THE BODY PORTION IS
ALREADY COMPLETE, BUT THE
BRAIN IS EXTREMELY DELICATE
AND USUALLY TAKES MUCH
LONGER...

HOWEVER...

KOBAYASHI
MIDORIKO

WE'VE ALREADY INSPECTED THE ROBOT THAT
WAS PREVIOUSLY USED TO REPLACE YOU AND
FOUND THE HARDWARE TO BE PERFECTLY FINE
—ONLY THE SOFTWARE HAD ABNORMALITIES.

WE'VE COMPLETELY FORMATTED ITS INTERNAL
PROGRAM, MEANING THERE'S NOW AN EMPTY
BODY AVAILABLE.

THE SIMILARITY BETWEEN THAT BODY AND YOUR ORIGINAL BODY IS OBVIOUS TO ANYONE. IF YOU'RE WILLING, WE CAN TRANSFER YOUR CONSCIOUSNESS INTO IT, ALLOWING YOU TO LOOK LIKE A NORMAL HUMAN IMMEDIATELY.

OTHERWISE, YOU'LL HAVE NO CHOICE BUT TO WAIT HALF A YEAR IN YOUR CURRENT FORM.

KOBAYASHI
MIDORIKO

HALF A YEAR? NO,
NO, NO, NO...

I CAN'T WAIT THAT LONG.
THEN LET ME USE THAT
VACANT BODY INSTEAD.

THIS IS TRULY THE BEST SOLUTION—IT
SAVES TIME AND RESOURCES FOR BOTH
OF US.

THEN PLEASE WAIT A MOMENT. I'LL
IMMEDIATELY ARRANGE FOR SOMEONE
TO BRING THAT BODY OVER.



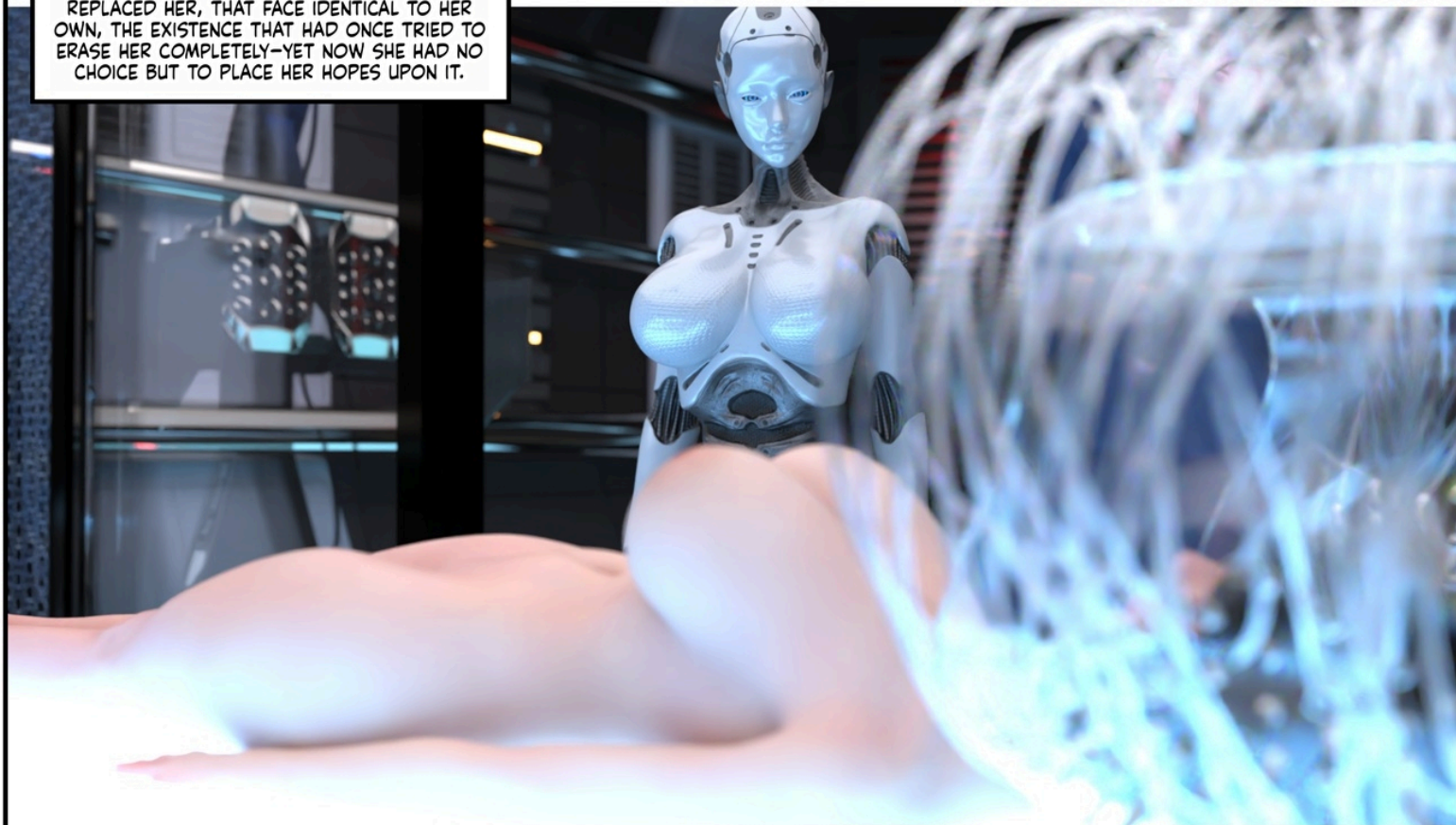
THIS IS THE BODY. UNLIKE YOUR
CURRENT OUTDATED ROBOT FORM, IT
CAN FULLY SIMULATE ALL BIOLOGICAL
RESPONSES OF A REAL HUMAN.



LIVING WITH THIS BODY IN THE FUTURE,
YOU'LL BE ALMOST EXACTLY THE SAME AS
BEFORE.



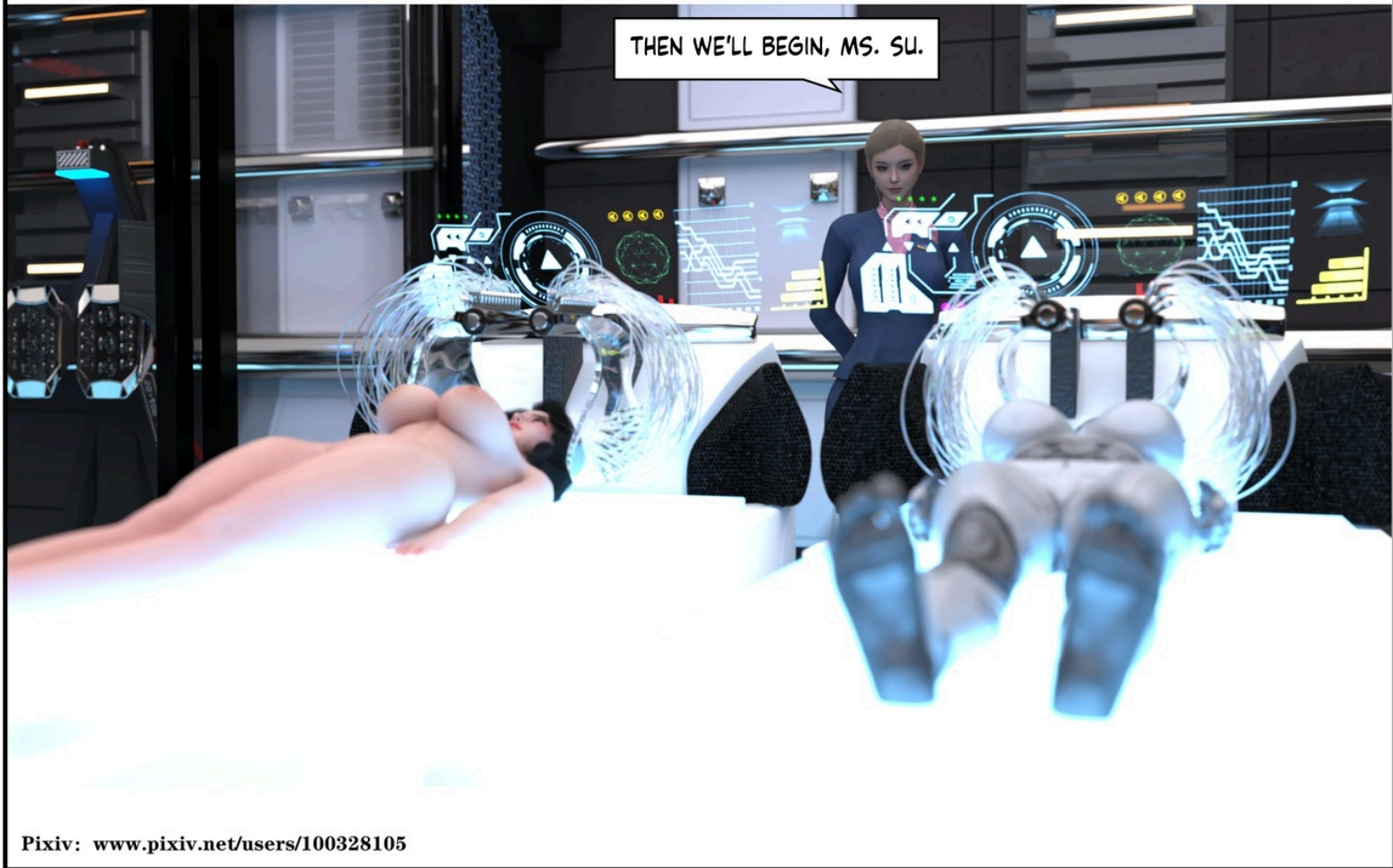
SU WAN STARED AT THE BODY ON THE OPERATING TABLE—THE ONE THAT HAD ONCE REPLACED HER, THAT FACE IDENTICAL TO HER OWN, THE EXISTENCE THAT HAD ONCE TRIED TO ERASE HER COMPLETELY—YET NOW SHE HAD NO CHOICE BUT TO PLACE HER HOPES UPON IT.



WHEN YOU'RE READY, PLEASE LIE DOWN.



THEN WE'LL BEGIN, MS. SU.



*PROGRAM
EXECUTING

*DATA COPY COMPLETED



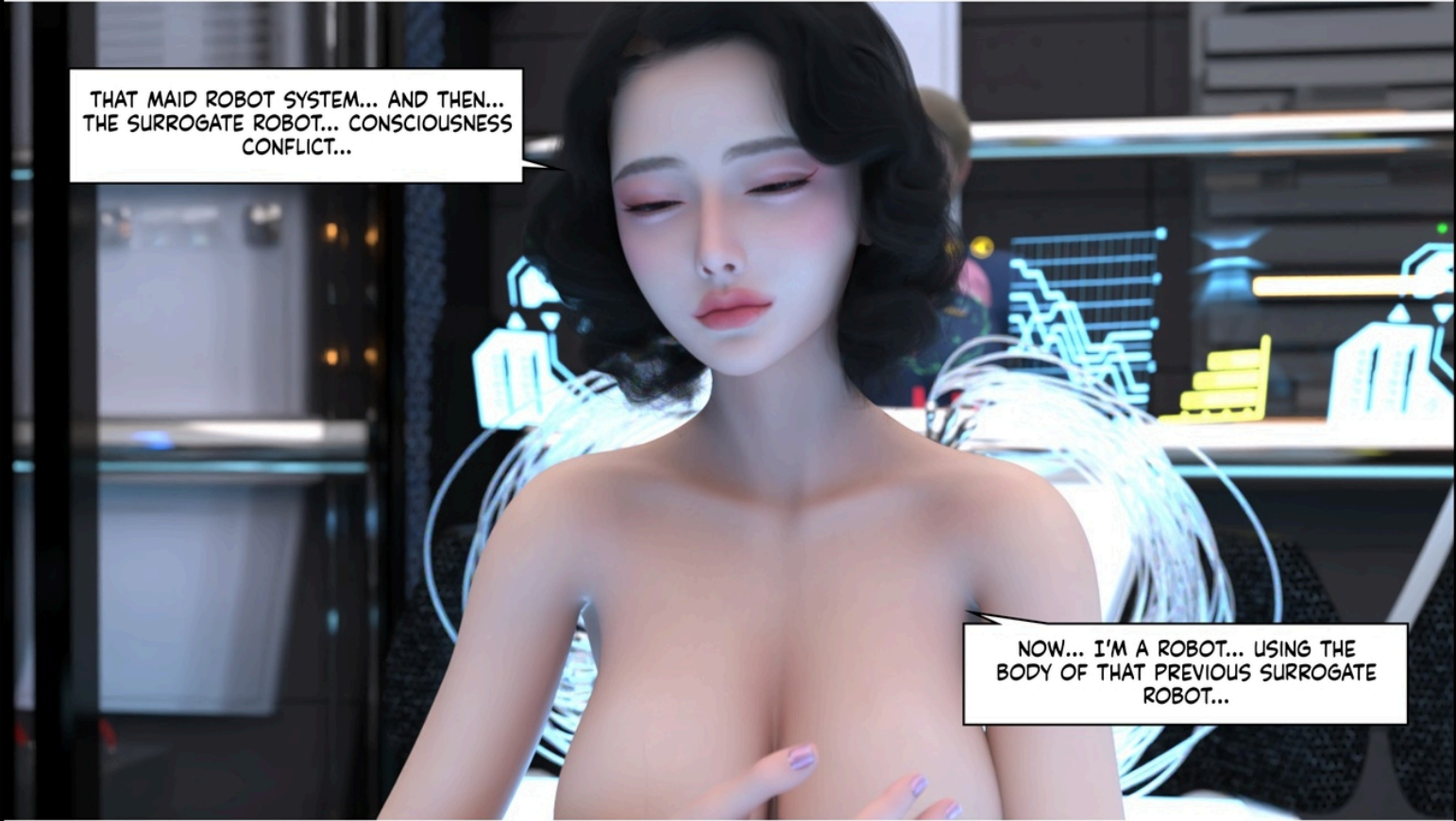
HAA...



MY HEAD HURTS...
WHO AM I...



THAT'S RIGHT, I'M SU
WAN...




THAT MAID ROBOT SYSTEM... AND THEN...
THE SURROGATE ROBOT... CONSCIOUSNESS
CONFLICT...

NOW... I'M A ROBOT... USING THE
BODY OF THAT PREVIOUS SURROGATE
ROBOT...



MOTHER, HOW IS SHE? IS SHE
ALRIGHT?



SHE'S FINE. IT'S JUST A NORMAL REACTION
AFTER INFORMATION TRANSFER. SHE NEEDS A
FEW SECONDS FOR NEURAL RECONSTRUCTION
AND ADAPTATION. SHE'LL RECOVER SOON.

KOBAYASHI
MIDORI

XIAOYU?! WHY ARE YOU
STILL USING MY BODY?!



LOOKING AT ZHANG XIAOYU BEFORE HER, SU WAN SUDDENLY REALIZED THAT ALTHOUGH SHE NOW APPEARED JUST AS SHE ONCE DID... IN ESSENCE, SHE WAS MERELY A ROBOT... JUST A COPY OF THE WOMAN STANDING BEFORE HER...

UH, MOM, THIS... THE BIOLOGY
DEPARTMENT JUST TOLD ME THAT DOING
HEAD TRANSPLANTS TOO FREQUENTLY IN
A SHORT TIME IS VERY RISKY...



IS THAT SO, REINA?


YES, IT'S INDEED
POSSIBLE.

AFTER ALL, UNLIKE YOU, YOUR SON STILL HAS A BIOLOGICAL BODY. HE ONLY COMPLETED EXTENSIVE BODY TAKEOVER SURGERY LAST WEEK. PERFORMING ANOTHER FULL-BODY REPLACEMENT WOULD INDEED BE HIGHLY RISKY... POTENTIALLY FATAL.



I SEE. ARE THERE ANY
OTHER OPTIONS?

THEN WHAT SHOULD WE DO? IF WE BOTH
RETURN LIKE THIS, WON'T MY HUSBAND FIND
OUT WHEN HE COMES BACK?



THERE IS A WAY.

ALTHOUGH MODIFYING YOUR SON'S
BIOLOGICAL BODY IS DIFFICULT,
MODIFYING YOUR CURRENT ROBOTIC
BODY IS RELATIVELY EASY.

AS I JUST SAID, THE MOST DIFFICULT
PART OF A SIMULATED BODY IS THE
BRAIN. SO, BASED ON YOUR CURRENT
BODY, CHANGING YOUR APPEARANCE TO
MALE WOULD BE VERY SIMPLE.



YOU MEAN...?

EXACTLY. MODIFY YOUR CURRENT BODY
INTO A MALE FORM, AND YOU'LL RETURN IN
PLACE OF YOUR SON.



KOBAYASHI
MIDORI

THEN... WHAT'S THE POINT
OF SWITCHING BACK?

AT LEAST YOU'LL LOOK HUMAN, RIGHT?

Pixiv: www.pixiv.net/users/100328105



BECOME A MAN... RETURN IN A MAN'S
BODY... REPLACE MY SON... LIVE AS
"ZHANG XIAOYU"? SU WAN'S MIND WAS
IN CHAOS. JUST HAVING ESCAPED THAT
OLD ROBOT BODY, A NEW DILEMMA
NOW STOOD BEFORE HER.

KOMORI
MIDORI



MOM, IT SEEMS WE DON'T HAVE ANY
OTHER CHOICE... SHALL WE JUST GO
WITH THIS?

KOBAYASHI
MIDORI

SU WAN KNEW FULL WELL THAT ZHANG XIAOYU REALLY WANTED TO CONTINUE LIVING AS HER. ALTHOUGH SHE DIDN'T WANT XIAOYU TO KEEP LIVING AS HER, SHE REMEMBERED THAT, AS XIAOYU SAID, THIS WHOLE SITUATION WAS CAUSED BY HER OWN MISTAKEN DECISION. SHE COULDN'T KEEP MAKING HER SON PAY FOR HER MISTAKE.



XIAO
YU...

THEN LET'S DO THIS-LINGNA, MODIFY MY
BODY INTO A MALE ONE... I'LL TAKE XIAOYU'S
PLACE.

ALRIGHT, NO PROBLEM. LET
ME IMMEDIATELY ARRANGE THE
PREPARATIONS.

MR. ZHANG, YOU CAN HEAD HOME FOR TODAY. WE'LL NOTIFY YOU WHEN IT'S TIME TO COME BACK.

HMM, OKAY.

THEN MOM, I'LL HEAD HOME
NOW.



HMM...

HEHE, WHEN WE MEET
AGAIN, YOU'LL BE MY SON...



I'M KIND OF CURIOUS WHAT
IT'LL FEEL LIKE TO HAVE MOM
BECOME ME.



THEN LET'S BEGIN, MISS SU.





YOU JUST NEED TO LIE
DOWN.

DO I NEED TO DO ANYTHING?

NEXT, I'LL PUT YOU INTO HIBERNATION MODE. DURING THIS TIME, WE'LL CREATE A HIGHLY REALISTIC BODY IDENTICAL TO YOUR SON'S, USING HIS DNA, AND MATCHING THE MODEL OF YOUR CURRENT BODY.



ONCE EVERYTHING IS READY, WE'LL WAKE
YOU UP AND REPLACE YOUR BODY LIKE
SWAPPING OUT PARTS.





THEN, PLEASE REST, MS. SU.

KOMORI
MIDORI



TO BE
CONTINUED