

I CAN'T BELIEVE
THEY'RE DOING THIS
TO ME, THIS IS
UNBELIEVABLE!

SWITCH

BY ABIMBOLEB

AFTER
EVERYTHING I'VE
DONE, AFTER
EVERYTHING I'VE
ACHIEVED FOR THEM,
CONTRACT OR NO
CONTRACT!



HOW DID I NOT NOTICE THAT CLAUSE IN THE CONTRACT? "SWITCH AFTER EVERY MAJOR SUCCESS?" LIKE HELL! I'M NOT SOME INTERN. SCREW THEM!

"IT'S MEANT TO SUPPORT THE HEALTHY DEVELOPMENT OF ALL STAFF MEMBERS, INCLUDING LEADERSHIP, BY GIVING EVERY EMPLOYEE A CHANCE TO EXPERIENCE EACH ROLE FIRSTHAND."



LIKE HELL IT IS. IT'S JUST A WAY TO HAND THOSE LAZY PEOPLE A SLICE OF LUXURY, WHILE I, THE ONE WHO ACTUALLY EARNS IT, END UP STUCK AS A SECRETARY?

THEY'RE TAKING EVERYTHING I'VE BUILT, MY WORK, MY PLANS, MY DEVELOPMENTS, AND USING IT AS THEIR OWN. AND GIVING IT TO SOME FUCKING LOSER? FUCK... THEM!



I'D RATHER QUIT
THAN LET THIS HAPPEN. I
MEAN, HOW DO THEY EVEN
PLAN TO ENFORCE IT, FORCE
ME INTO A SECRETARY
ROLE? I'M GOING TO SUE
THEM.



OH YEAH, RIGHT,
THOSE "NANOBOTS"
THEY SUPPOSEDLY SLIPPED
INTO MY CELEBRATORY DRINK
WHEN I SIGNED THE DEAL
WITH THE SANDERSONS,
SURE.



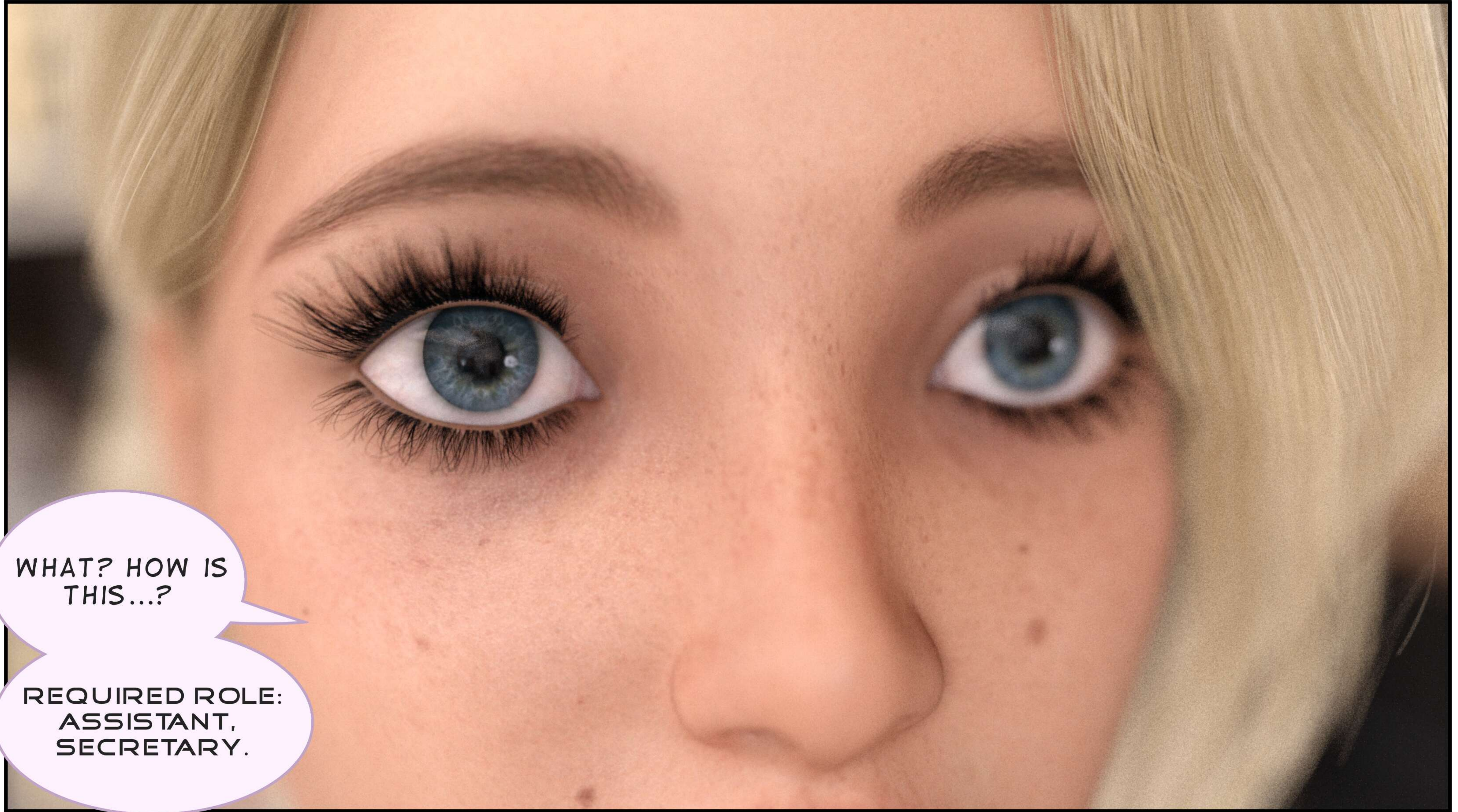
A woman with blonde hair tied back, wearing red-tinted sunglasses and a grey patterned sleeveless dress, stands in an office. She has a pained expression, with her mouth open and hands raised to her head. The background shows office shelves, a desk with a computer monitor, and a plant.

I THINK I'M
JUST GONNA...
WAIT... MY HEAD...
AHH...

A woman with blonde hair, wearing a grey patterned dress, is holding a pair of sunglasses. She has a surprised expression on her face, with her hand near her mouth. The background is a blurred office setting with bookshelves and a desk.

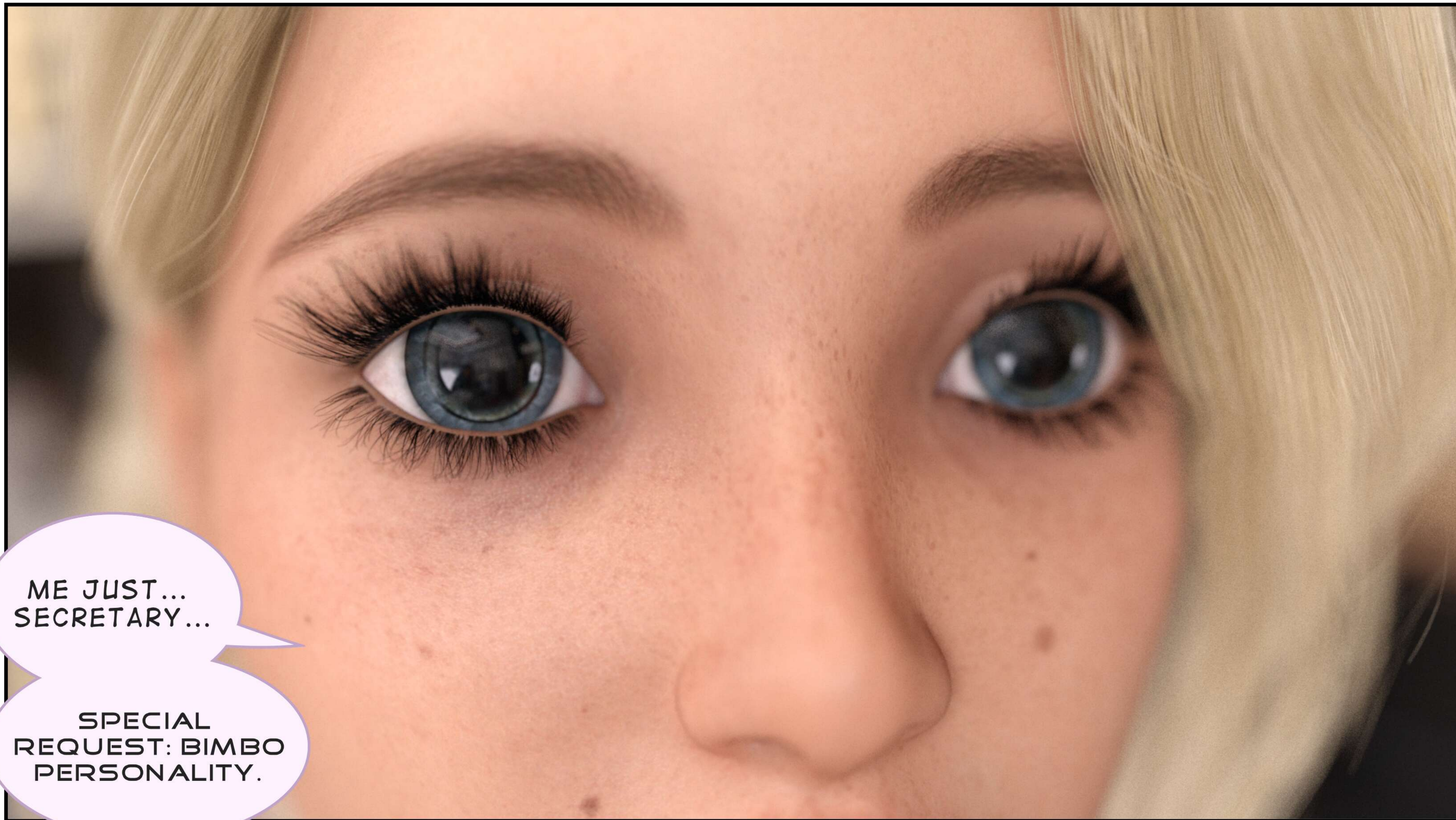
WAIT... THIS
CAN'T BE
REAL...

SUBJECT:
BRIANNA
FAIRMONT, STATUS:
LEADERSHIP,
DEVELOPER



WHAT? HOW IS
THIS...?

REQUIRED ROLE:
ASSISTANT,
SECRETARY.



ME JUST...
SECRETARY...

SPECIAL
REQUEST: BIMBO
PERSONALITY.




STARTING
MODIFICATIONS.



HUH? WAIT,
WHAT?!




MY WIPS?
WHAT THE
FWUCK?

A woman is shown from the waist up, wearing a grey and white patterned, sleeveless vest over a light-colored top. She has her arms outstretched. A speech bubble is positioned to her left. The background is a blurred office or library setting with bookshelves and a plant.

MY WHOLE
BODY IS ON
FWIRE!

A woman with blonde hair is shown from the chest up, wearing a grey and white patterned, short-sleeved cardigan with a deep V-neckline. She is in a gym, with exercise equipment and a green plant visible in the background. Her hands are raised and slightly open, as if gesturing or explaining something. A speech bubble is positioned to her left.

MY BREA---
BRE-- LIKE,
TITTIES?



LIKE,
OMIGOTH! THEY
AWE WIKE,
GETTING HUGE!

A photograph of a person's lower body, showing the back and side of their legs. They are wearing light tan or beige trousers with a matching belt. The trousers have a subtle checkered pattern. The person is also wearing a grey sweater. The background is a blurred indoor setting with a wooden chair and some greenery. A speech bubble is overlaid on the left side of the image.

LIKE,
OMIGOTH! WHAT
ON EAWTH ITH
HAPPENING TO
MEEEE?

A photograph of a mannequin wearing tan-colored trousers, viewed from the back. The mannequin is wearing a grey long-sleeved shirt. The trousers have a visible waistband and a seam down the center of the back. A speech bubble is overlaid on the left side of the image, containing text. The background is a blurred indoor setting with wooden chairs and a table.


UMMM...
WAIT WHAT? MY
ATH... ITH WIKE...
GETTING BIGGER
TOO?

A close-up photograph of a person's buttocks, wearing tan-colored, textured pants. The person is also wearing a grey long-sleeved shirt. The background is slightly blurred, showing what appears to be an indoor setting with a wooden chair and a grey door.


WIKE, THTOP!
THTOP THITH
WIGHT NOW!



THITH ITH WIKE,
TOTALLY NOT
COOL!

A close-up photograph of a person's hand with light-colored, almond-shaped manicured nails. The hand is positioned in the center-right of the frame. A purple speech bubble with a white border is located in the upper-left quadrant, containing the text "OH, NO-WAY!". The background is blurred, showing a person wearing a grey and white checkered shirt. The entire image is enclosed in a black border.

OH, NO-WAY!



WIKE... MY WHOLE
BODY ITH WIKE
TOTALLY CHANGING
BUT... THITH ITH
IMPOTHIBLE!

A woman with long, straight blonde hair is shown from the back, looking out a window. She is wearing a light-colored, sleeveless top with a subtle pattern. The background is a blurred interior of a restaurant or cafe, with warm lighting and a window showing a bright outdoor scene. A speech bubble is overlaid on the left side of the image.

WIKE, MY HAIW
TOOOO?! WHAT ITH
GOING ON WITH
MEEEE?

A woman with long, straight blonde hair is shown from the back, looking towards the right. She is wearing a light-colored, sleeveless top and a tan skirt. Her right hand is raised to her forehead. The setting is a modern living room with a white sofa, a round coffee table, and framed artwork on the wall. A speech bubble is overlaid on the left side of the image.

WIKE, BRI-BRI IS
TOTALLY NOT OKAY
WITH THITH!

A photograph showing the back and buttocks of a woman wearing a grey, ribbed, long-sleeved top and tan-colored, high-waisted pants. The background is a blurred interior room with wood-paneled walls, a framed picture, and a white sofa.

LIKE, BRI-BRI IS
WIKE
TOOOTALLY...



WIKE,
SERWEEOUSLY!



CONFUSED...



OH MY GAWSH, LIKE
THEY TOTALLY DID IT!
THEY WEALLY TURNED
BRI-BRI INTO A BIMBO
SEXWETAWY!



HOLY SHIT IT'S
REAL! YOU... YOU
REALLY ARE JUST A
SIMPLE DOLL!


GOSH, YOU WERE
ALWAYS BITCHY BUT
NOW... YOU ARE JUST A
SIMPLE SILLY
SECRETARY! THIS IS
AWESOME!

OMG, I CAN'T
WAIT TO ORDER YOU
AROUND! THIS IS
GONNA BE FUN!



OMIGOSH HH, WIKE
WHAT?! YOU'RE WEALLY
GONNA TAKE OVER ALL OF
BRI-BRI'S WORK? FOR
LIKE, WEAL?!

UMMM WIKE, NO!
THITH IS TOTALLY NOT
OKAY! YOU'RE SUCH A
LOSER, LIKE OMG!



WELL TOO
BAD! I'M YOUR
BOSS NOW! AND
WITH A NEW BOSS,
THERE ARE NEW
RULES!

LIKE THAT
OUTFIT OF YOURS
WON'T CUT IT! SHIT
I CAN'T WAIT TO
SEE YOUR BIG
TITTIES!

HUH? WIKE, YOU WEALLY
THINK YOU CAN SEE
BRI-BRI'S...

TITTIES?!





OHMIGOD WIKE HOW
DID YOU MAKE TITTIES
NAKED!

STILL THE
NANOBOTS, WHICH
YOU PROBABLY
DON'T EVEN
UNDERSTAND
ANYMORE.



THEY ARE
ADJUSTING YOUR
NEW OFFICE
UNIFORM!
PERFECT!

LIKE UNIFORM?
HUH?

AND YOUR BADGE
OF COURSE!

THIS IS WIKE...
TOTALLY NOT
HAPPENING...

NOW BRI-BRI
DON'T FORGET
THIS IS
IMPORTANT!

KEEP YOUR BADGE
ON YOU AT ALL TIMES,
OTHERWISE THEY MIGHT
THINK YOU WANDERED
IN AND THROW YOU
OUT.

THE END

