

P^{the} Patch

ILLUSTRATED BY GRUMPY-TG // COMMISSIONED BY FREDA





GIRL, WHAT ARE YOU DOING IN TOWN BUYING CANDLES ON SUCH A BEAUTIFUL SATURDAY AT THE LAKE?

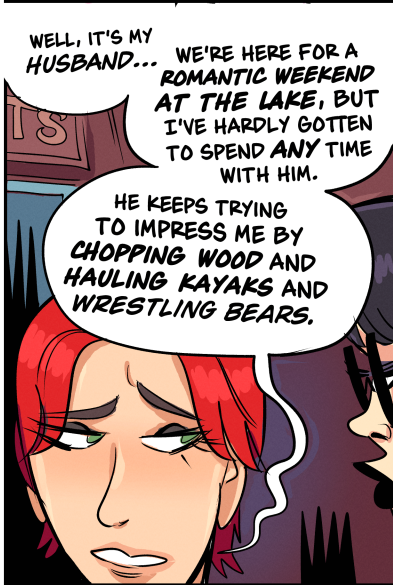
UH!

DO I KNOW YOU?

THAT'S A CRY FOR HELP IF I'VE EVER SEEN ONE.



you will trust me completely.



WELL, IT'S MY HUSBAND... WE'RE HERE FOR A ROMANTIC WEEKEND AT THE LAKE, BUT I'VE HARDLY GOTTEN TO SPEND ANY TIME WITH HIM.

HE KEEPS TRYING TO IMPRESS ME BY CHOPPING WOOD AND HAULING KAYAKS AND WRESTLING BEARS.

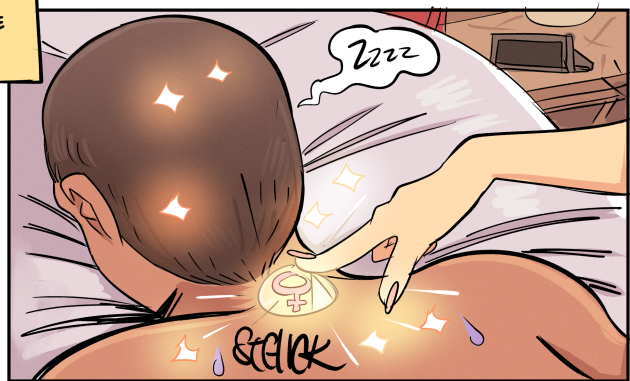
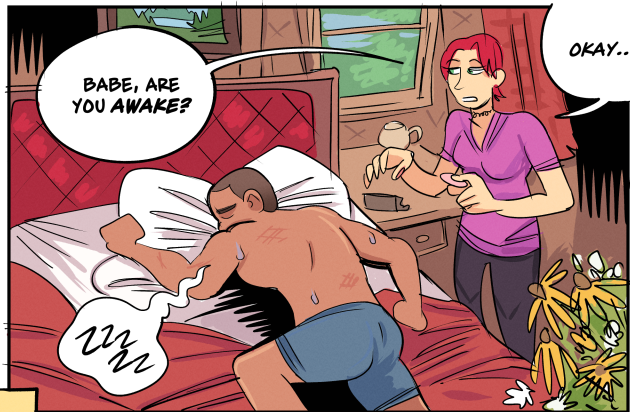
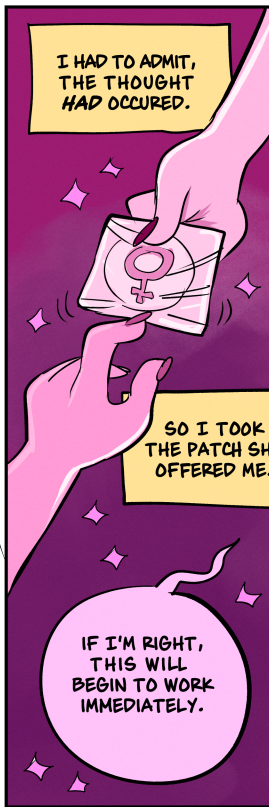


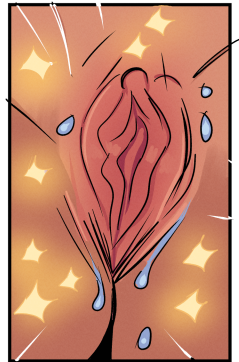
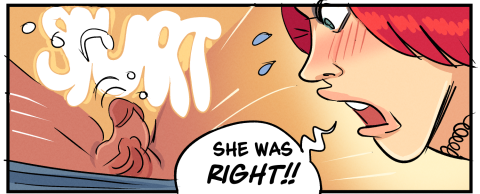
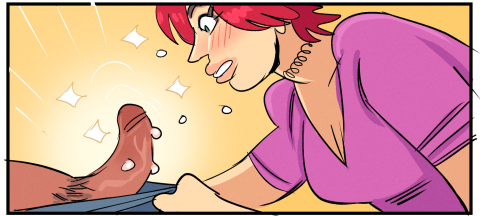
THE THING IS- I'M NOT EVEN CONVINCED BY HIS MANLY PERFORMANCE.

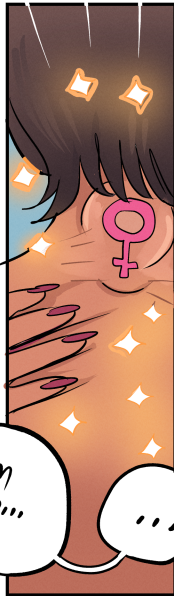
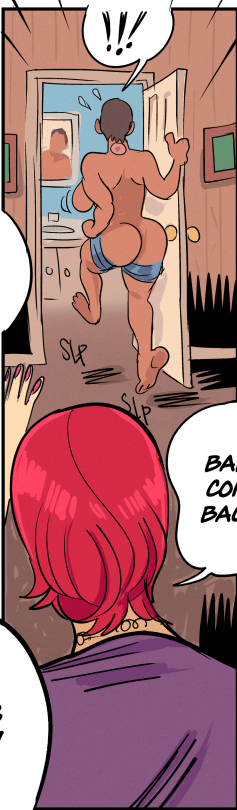
I JUST WISH HE HE DIDN'T THINK HE HAD TO IMPRESS ME WITH STUFF LIKE THAT.

BABE WHAT IS THAT??!

I THOUGHT MAYBE WE COULD JUST BE OURSELVES THIS WEEKEND.







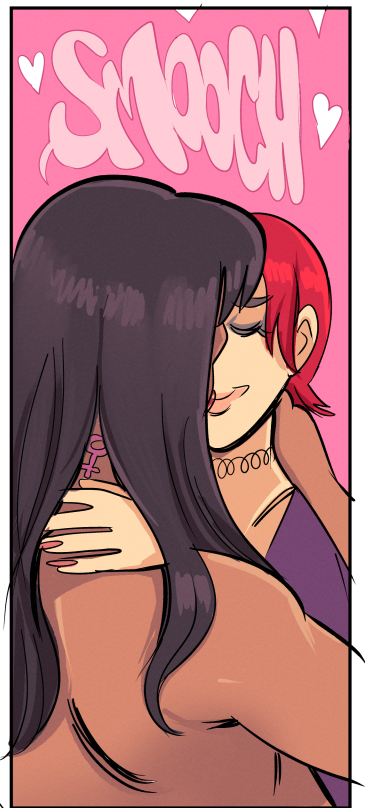
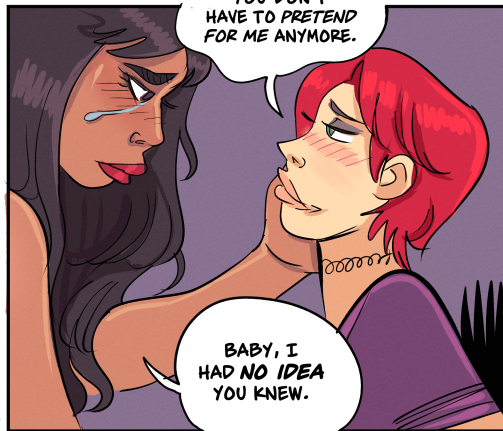
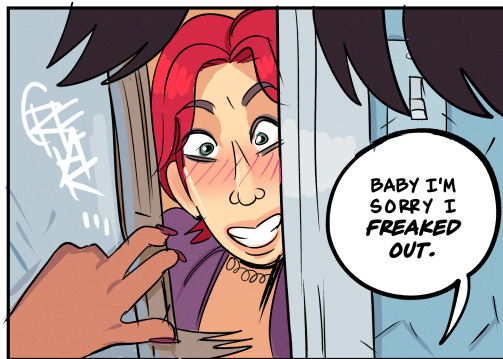
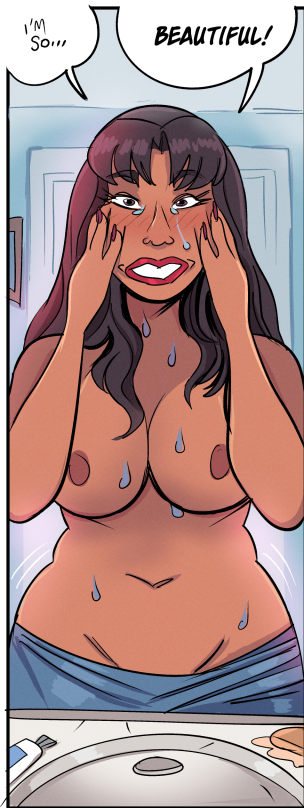


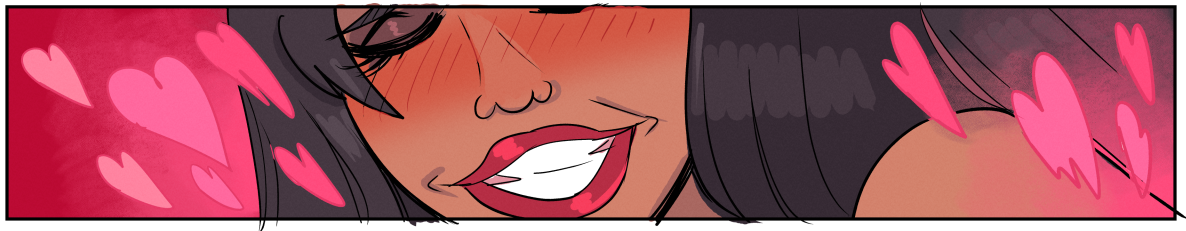
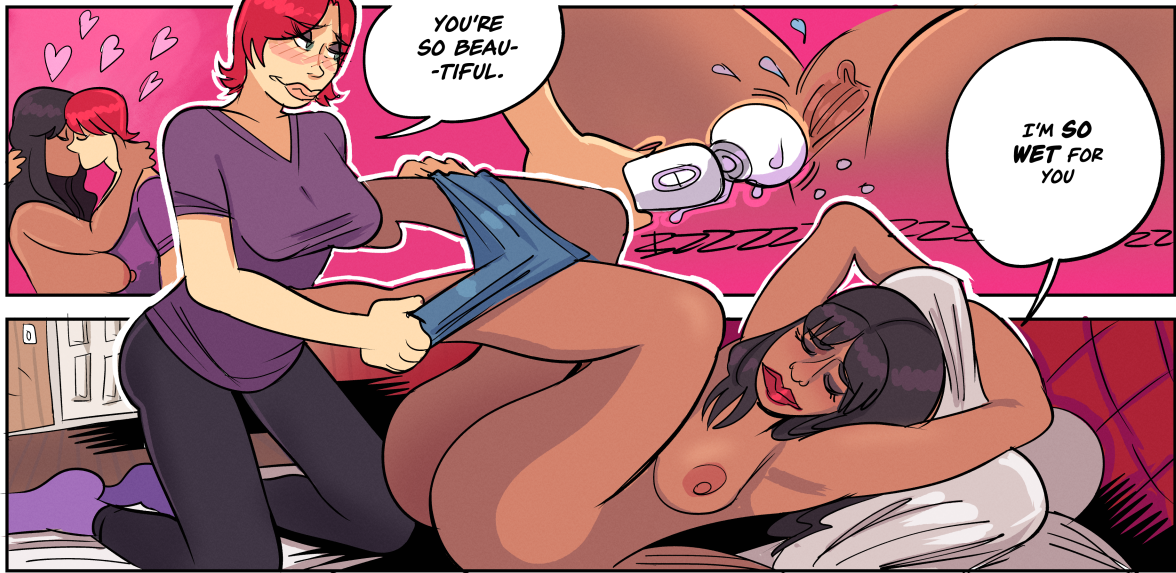
SHF

GSH
GSH

BABE, ARE YOU OKAY?

I-
I'M
...





LATER...



ISN'T THIS
AMAZING,
BABY?

YOU'LL NEVER
HAVE TO WRESTLE
ANOTHER BEAR
AGAIN!



FIN.

SPLASH!!