



THE X-PLEASURE-MACHINE

Art and Story
by Tawny Tomsen
January 2017

*preamble about copyright: Due to the fact that T&T Products is an existing content creator at Second Life® I want to disclose that the used devices in this upcoming story are **not** creations from T&T Products.*

*This wonderful devices are created by **Davo** and are available at **Renderotica**.*

The statement in the story, that these devices are created by T&T is only part of the storyline.

T&T Products



THE X-PLEASURE-MACHINE



Today we had an appointment with a member of T&T-Products. We should participate on a test run with one of their newest creations called the X-pleasure-machine. Our order is, to write a report about this test and create a marketing concept for this new machine. It is a great opportunity to take a look inside the secrets of T&T-Productions. This machine was developed for about 2 years at a secret place. This is the first time, T&T shows this new machine to foreigners.

We know only the place and the planned duration of this test. The test-duration is estimated with 48 hours. T&T-Productions is well known as one of the best manufacturers belonging to bondage-gear and equipment. All friends are really curious what they did, the last 2 years.

THE X-PLEASURE-MACHINE



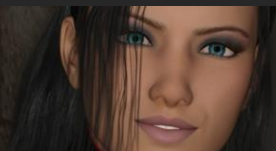
Hello, I think, you are the person, who should stay the next 48 hours with me while testing our new T&T device. Let me introduce myself. I am Sheila, a member of T&T-Productions and I am responsible for quality and testing. As you know, we had to start today a final test with the X-Pleasure-Machine .

I am a submissive person and Miss Tawny ordered me to do this final test on this machine. I am glad you are here, to take care, that everything works fine. Though you will be able to interrupt this test in case of danger.

Please, follow me.

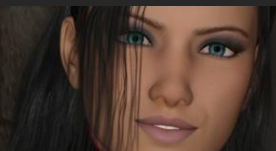


THE X-PLEASURE-MACHINE



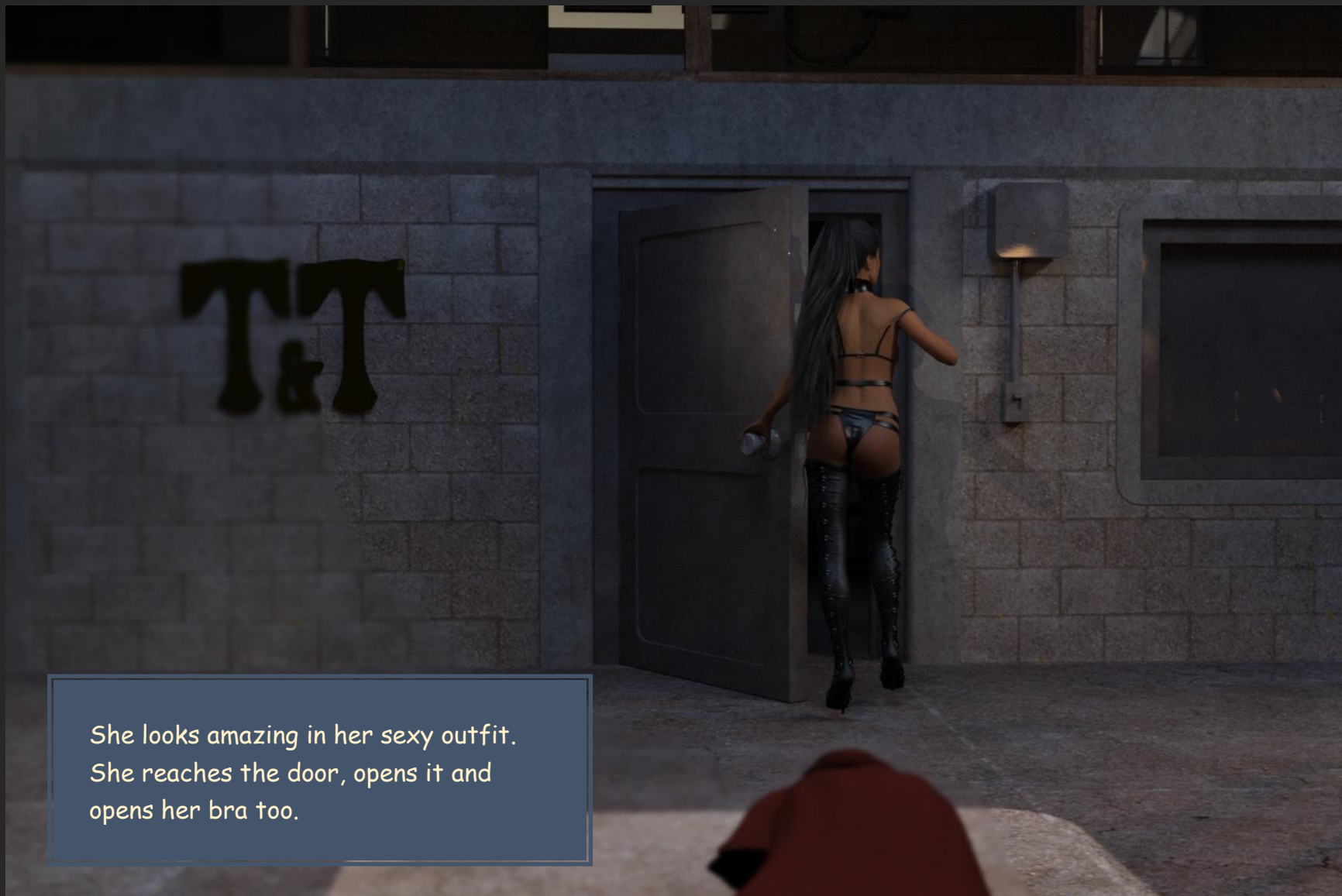
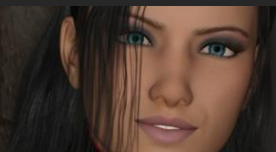
We are proud to be the first, who get an introduction of this new Device. And now, we are at the secret location.

THE X-PLEASURE-MACHINE



Sheila walks straight ahead to the door in front of her and removes her coat while walking.

THE X-PLEASURE-MACHINE



She looks amazing in her sexy outfit. She reaches the door, opens it and opens her bra too.

THE X-PLEASURE-MACHINE



Here are some cuffs I had to wear at wrists and ankles. These cuffs are needed for the machine to fix me in position and make me helpless.

THE X-PLEASURE-MACHINE

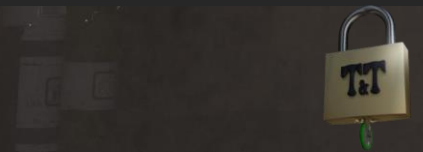
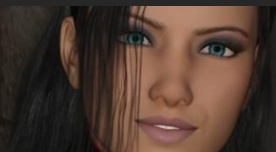


I am pretty sure you are curious about it. I had to do a few preparations before we can continue. I will explain everything in detail soon.

First she puts the right ankle-cuff on. They look really strong.



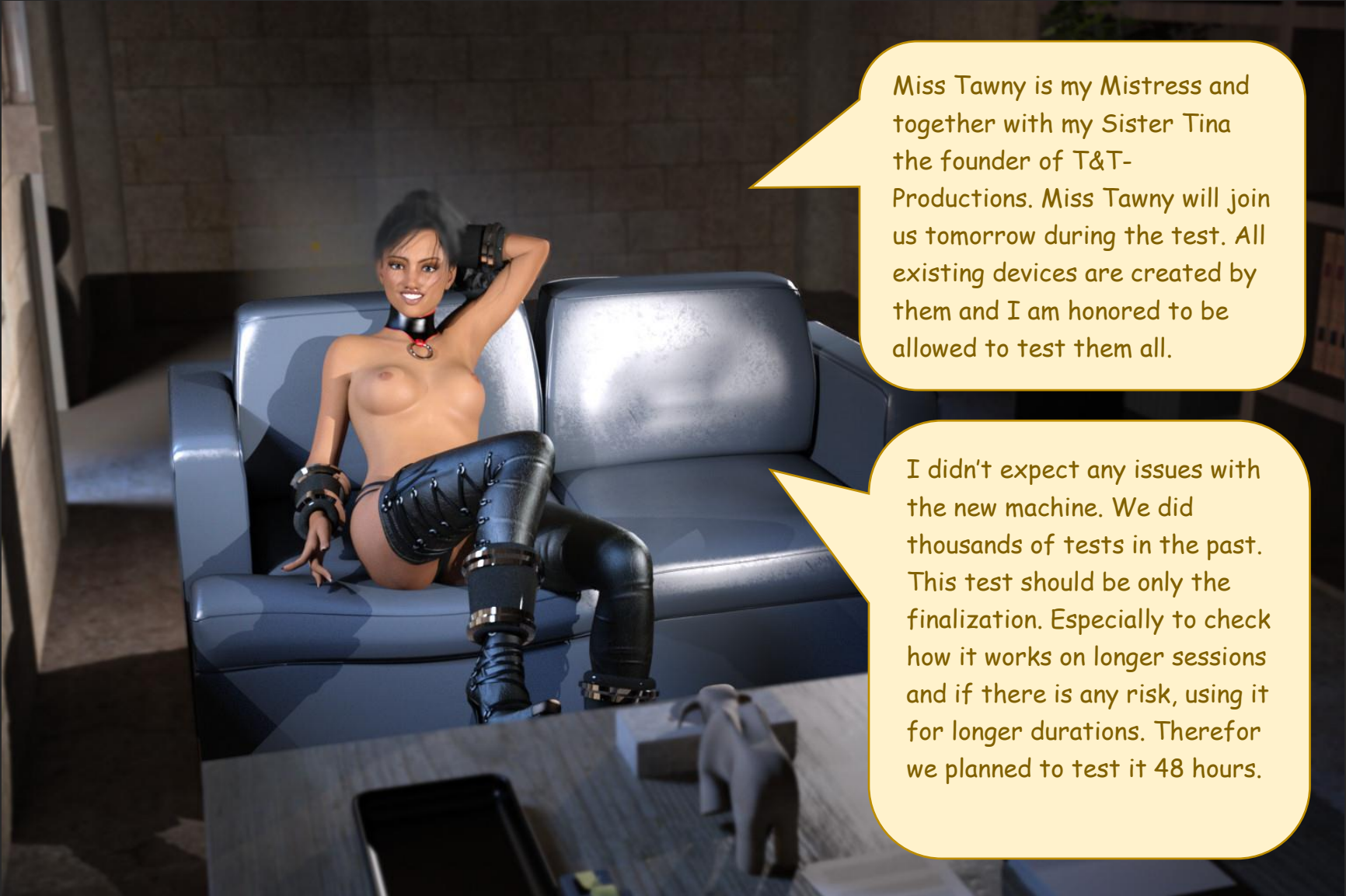
THE X-PLEASURE-MACHINE



One cuff is left and when I am finished, we can start.



THE X-PLEASURE-MACHINE



Miss Tawny is my Mistress and together with my Sister Tina the founder of T&T-Productions. Miss Tawny will join us tomorrow during the test. All existing devices are created by them and I am honored to be allowed to test them all.

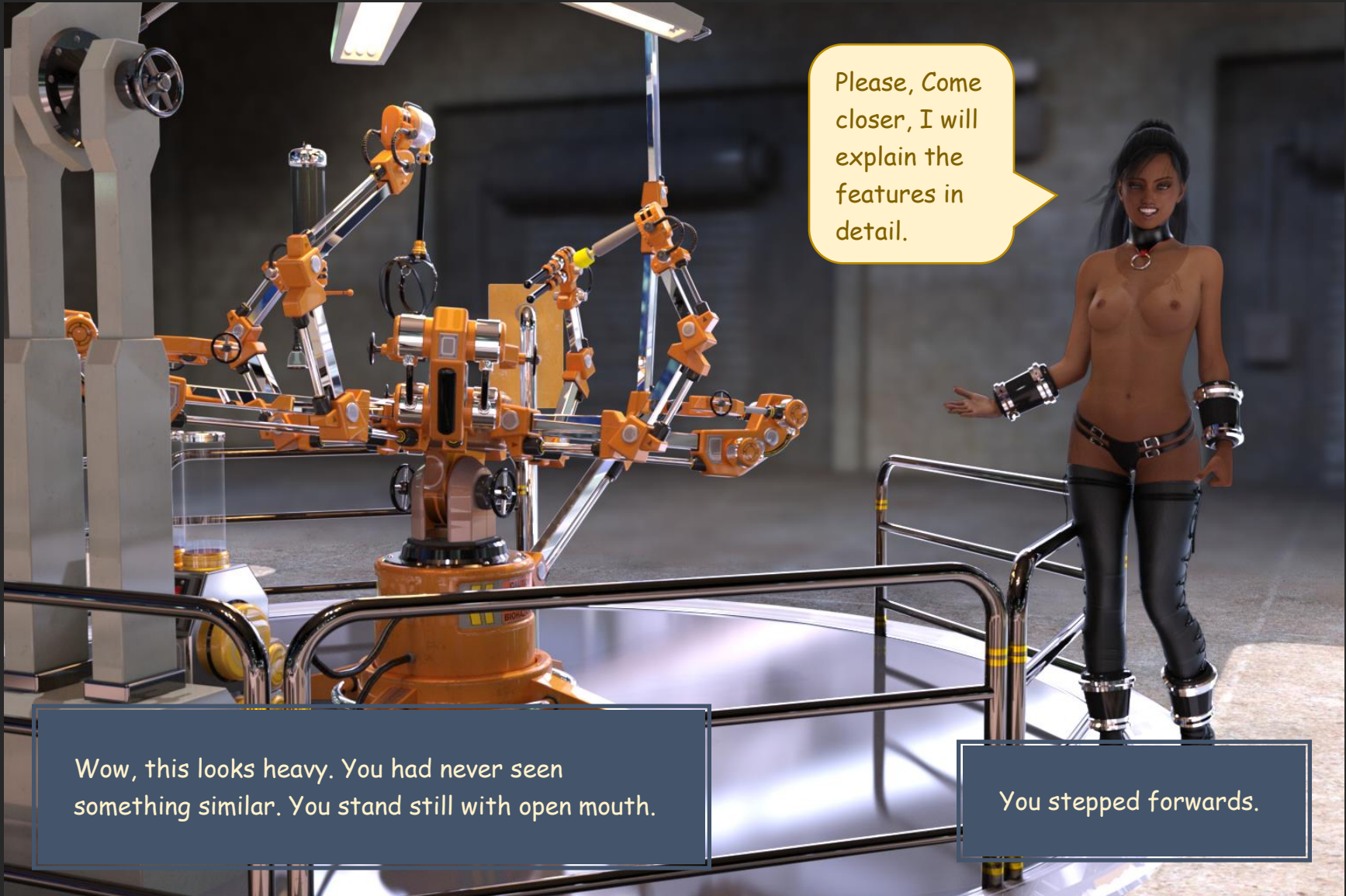
I didn't expect any issues with the new machine. We did thousands of tests in the past. This test should be only the finalization. Especially to check how it works on longer sessions and if there is any risk, using it for longer durations. Therefore we planned to test it 48 hours.

THE X-PLEASURE-MACHINE



Please follow me. I will try to introduce you into the features of the X-pleasure-machine.

THE X-PLEASURE-MACHINE

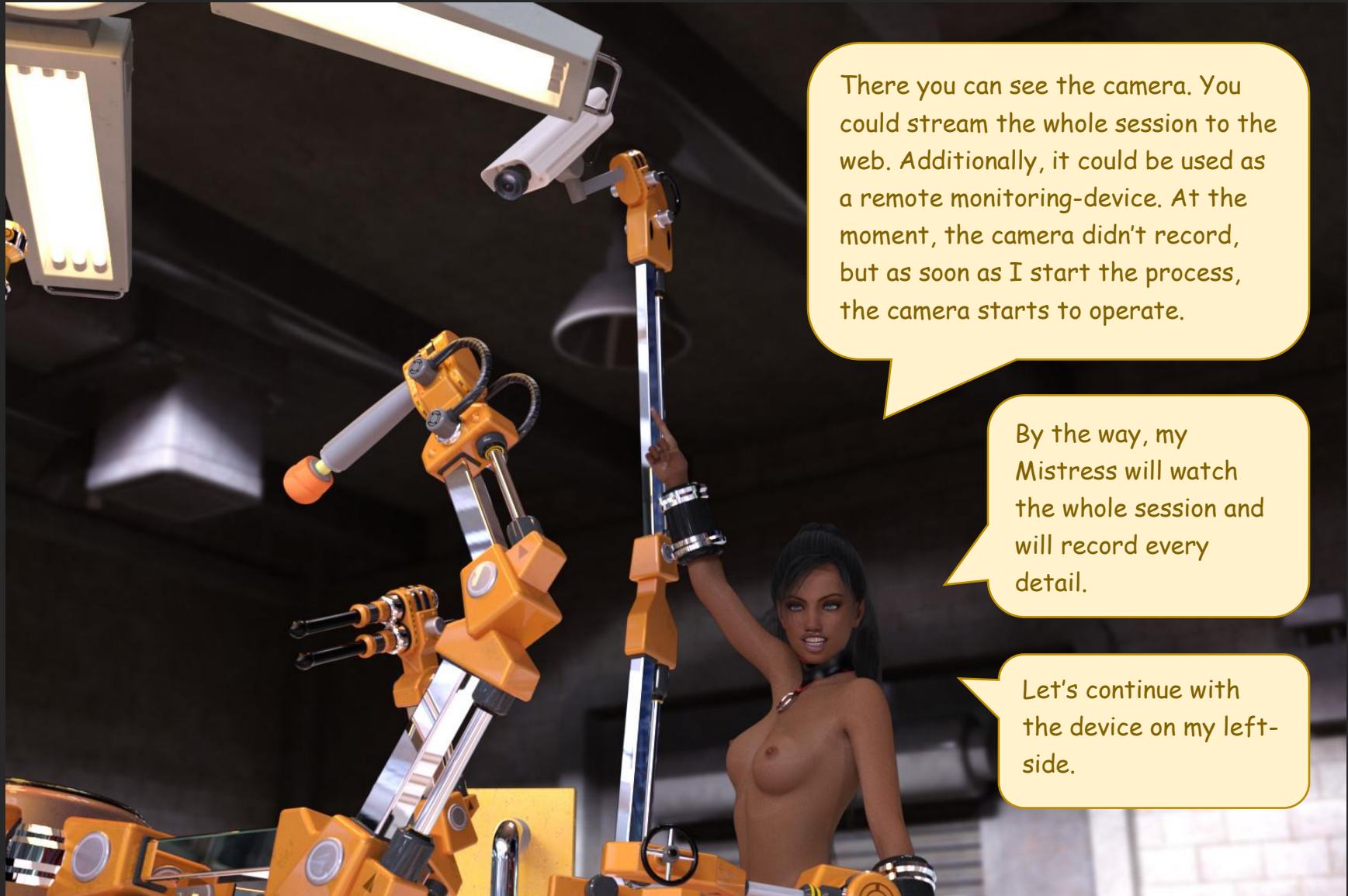


Please, Come closer, I will explain the features in detail.

Wow, this looks heavy. You had never seen something similar. You stand still with open mouth.

You stepped forwards.

THE X-PLEASURE-MACHINE



There you can see the camera. You could stream the whole session to the web. Additionally, it could be used as a remote monitoring-device. At the moment, the camera didn't record, but as soon as I start the process, the camera starts to operate.

By the way, my Mistress will watch the whole session and will record every detail.

Let's continue with the device on my left-side.

THE X-PLEASURE-MACHINE



These are the Anal- and Vaginal-probes and stimulation device. They are controlled by the master-computer and can vibrate and thrust.

In our current program, the kind of stimulation, the duration and the intensity is set to random mode. Which means that the rest-time is between 5 and 40 Minutes and similar the action-time.

So, it could happen, that the victim could not reach any orgasm during the timeframe or maybe she will receive multiples. Who knows?

THE X-PLEASURE-MACHINE



Oh my ...
I'll gain horny
only when
thinking about

This magic wand works
similar, but penetrates
only the mons and the
pearl.

Sheila blinks and
smiles in your eyes.



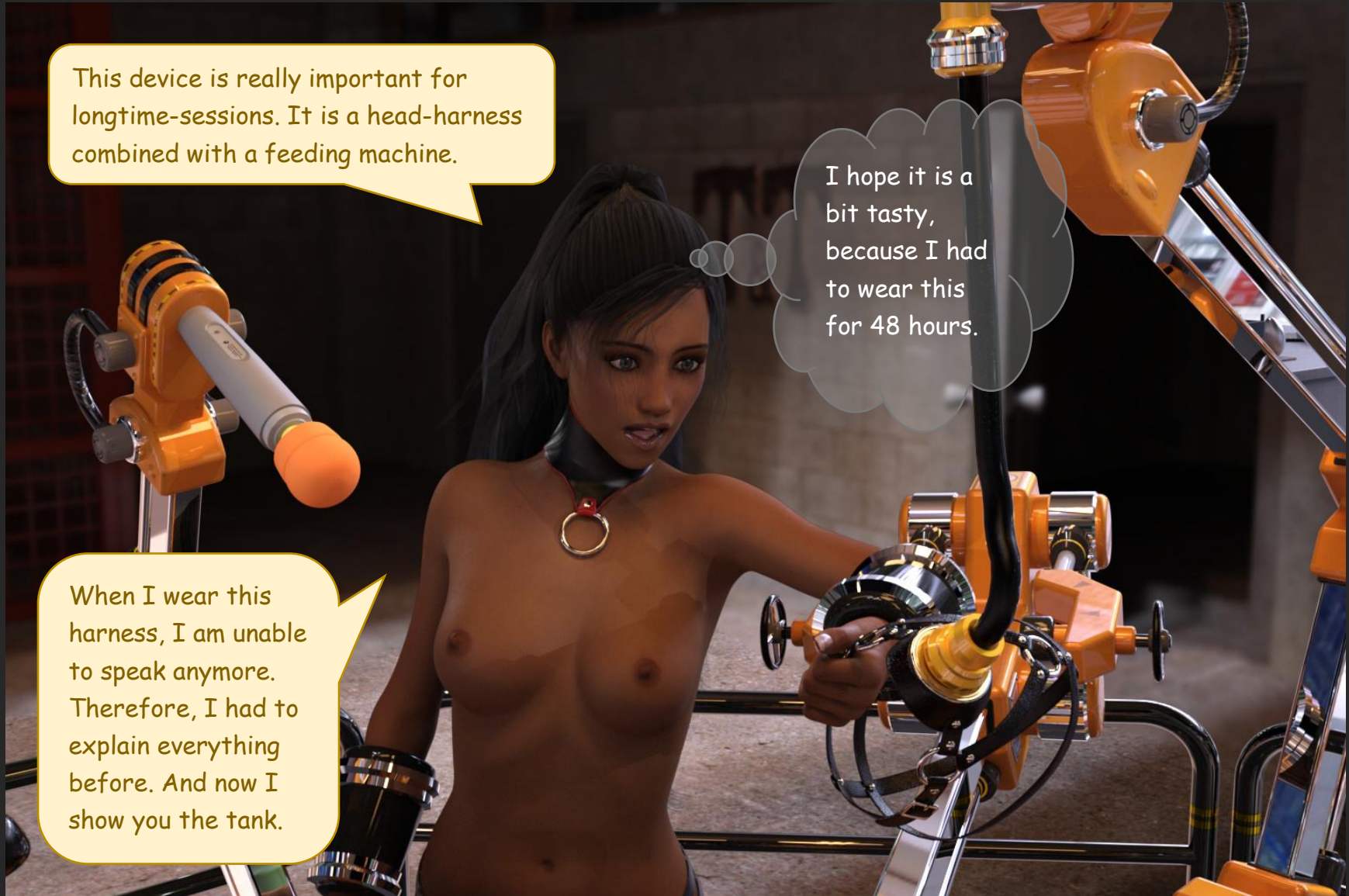
THE X-PLEASURE-MACHINE



This device is really important for longtime-sessions. It is a head-harness combined with a feeding machine.

I hope it is a bit tasty, because I had to wear this for 48 hours.

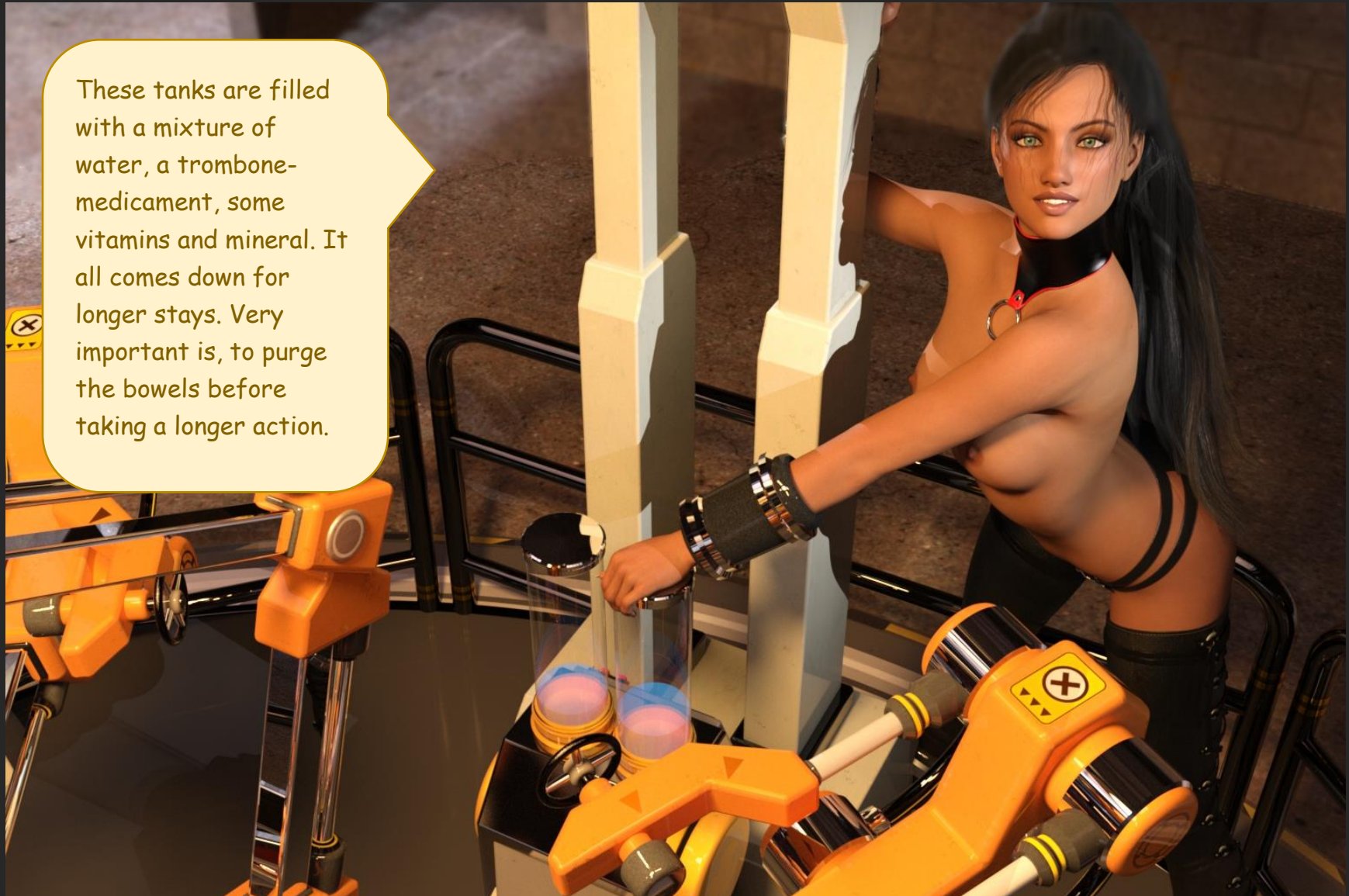
When I wear this harness, I am unable to speak anymore. Therefore, I had to explain everything before. And now I show you the tank.



THE X-PLEASURE-MACHINE



These tanks are filled with a mixture of water, a trombone-medicament, some vitamins and mineral. It all comes down for longer stays. Very important is, to purge the bowels before taking a longer action.



THE X-PLEASURE-MACHINE



Last not least, there is a pair of breast suction device. They could cause pain and pleasure. A minimum vacuum will be forced during the whole session to prevent the cups dropping down. The head-harness and these cups have to be adjusted manually.

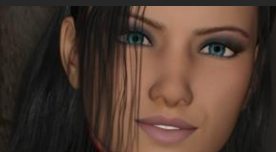
THE X-PLEASURE-MACHINE



And this is the brain of the machine. The master-computer. You can control each device manually, select random modes or you can insert a whole program with controlled actions.

Look! ... In case of danger, please hit this button. It will interrupt the whole process and will free the victim.

THE X-PLEASURE-MACHINE



RANDOM MODE SET, DURATION 48 HOURS

PRESS ENTER TO START

ETA: NOT STARTED YET

ALL SYSTEMS READY

Let's check the camera, if the adjustments are correct.

THE X-PLEASURE-MACHINE



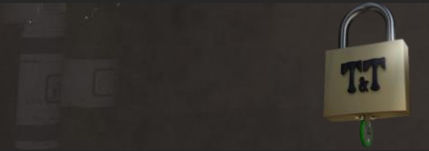
Yeah It looks good. And the viewing angle looks fine too. When I start the process, the camera will start to work and you can see the countdown in the left bottom corner. By the way, after starting the process, I had a timeframe of about half an hour to fit all devices on my body.

Do you have any questions?

You shakes your head and you couldn't believe that this is true.

OK So let's start Ready Set Go

THE X-PLEASURE-MACHINE



The panties are useless for the next step.

Start in: 00:30

**ALL SYSTEMS READY ...
INITIATING STARTING
SEQUENCE
THE VICTIM HAS TO BE
ADJUSTED WITHIN 30
MINUTES**

You noticed the voice of the computer which gives you the current status.

THE X-PLEASURE-MACHINE



And now, let's prepare myself. Oh my good ... I am really horny before it starts over ... My left leg is fixed now ... However, I had no longer the possibility to stop the process.

Start in: 00:28

DURATION TIME WAS SET TO 48 HOURS

MODE IS RANDOM ... ENJOY

CAUTION
BIOHAZARD

THE X-PLEASURE-MACHINE



My legs are fixed now and the next is to place the cups on my breasts ... mmmhhhhh ... I can feel the airstream on my breasts.

Start in: 00:21

Oh yeaahhh ... I feel the sucking on my nipple ... it feels really good

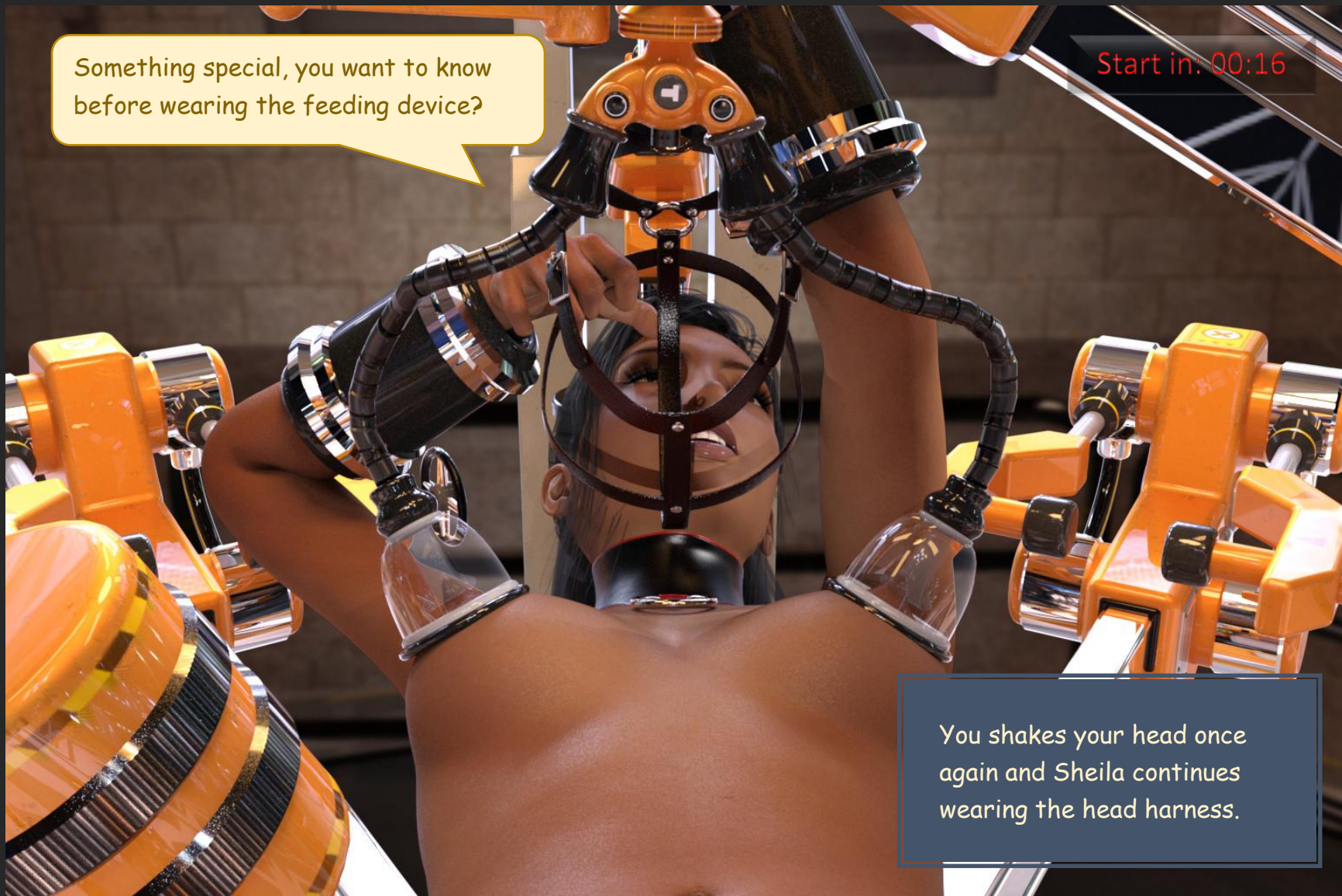
You noticed the goose bumps over Sheilas whole body.

THE X-PLEASURE-MACHINE



Something special, you want to know before wearing the feeding device?

Start in: 00:16



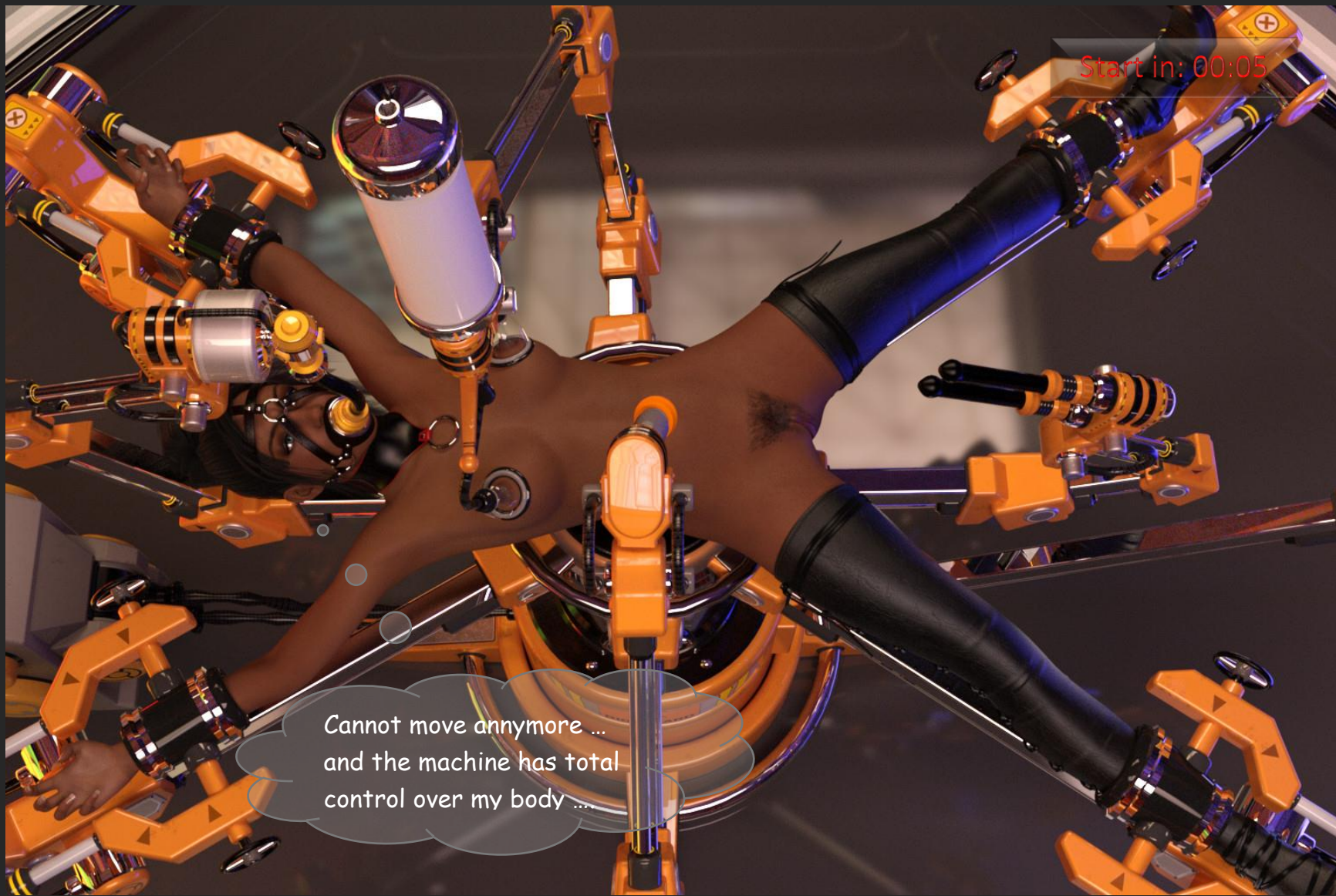
You shakes your head once again and Sheila continues wearing the head harness.

THE X-PLEASURE-MACHINE

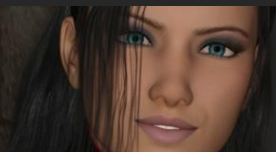


Start in: 00:05

Cannot move anymore ...
and the machine has total
control over my body ...



THE X-PLEASURE-MACHINE



Sheila moans during inserting the Probes. She breathes a bit faster and it seems, Sheila is very excited about this test.



Start in: 00:02

ALL CUFFS DETECTED

ADJUSTING THE PROBES AND THE MAGIC WAND

Oh my god ...
this feels
sooooo good

THE X-PLEASURE-MACHINE



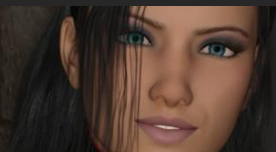
Start in: 00:01

ATTENTION ...
LEAVE THE PLATFORM ...
ISOLATION MODE INITIATED

A glass cage lowers from the ceiling and isolates Sheila.



THE X-PLEASURE-MACHINE



ETA: 46:22

Sheilas Nipples are stretched to a maximum level while the vacuum was increased by the machine.

Can I bear this?
It started already and i feel that my mind looses.

SET BREAST SUCTION LEVEL UP



THE X-PLEASURE-MACHINE



Oh shit ... this is
much too heavy ...

ETA: 44:37

INCREASING VAGINAL THRUST

Time runs down. In the meantime, the machine changed the penetrating devices, the speed and the intensity randomly. Sheila received some orgasms but more orgasms are prevented. The only thing she could hear are the follow-up messages of the computer.

THE X-PLEASURE-MACHINE



Minute after Minute ...
Hour after Hour counts
down. Sheila is
permanent in a high
level of ecstasy. Her
mind shuts down and
floats only in aroused
feelings.

ETA: 42:17

VIBRATION INCREASED

The computer tortures Sheila's
Pussy merciless drives her close
to a climax and stops before.

THE X-PLEASURE-MACHINE



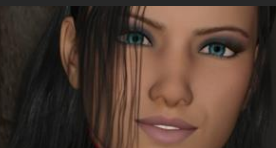
BREAST SUCTION STEADY LEVEL 5 CHANGE IN: 00:13:23
ANAL PROBE INACTIVE INACTIVE 00:25:17
VAGINAL PROBE THRUST LEVEL 3 00:03:03
MAGIC WAND VIBRATING LEVEL 2 01:02:16

The camera records every detail and the computer gives from time to time status information especially on status changes.

ETA: 37:23:15

ALL SYSTEMS READY

THE X-PLEASURE-MACHINE



ETA: 30:28

Hello ... I am Tawny and this is Tina, my Love and my Sub.
How is Sheila doing? Hope she is doing well.



ANAL VIBRATIONS INTENSIFIED

The gate opens and Tawny together with Tina arrives.
Sheila noticed it only blurred but she feels much better

THE X-PLEASURE-MACHINE



Holy shit ... how could Sheila endure this torture?

ETA: 30:26

AUTHORIZED PERSON DETECTED
ORDER RECEIVED
OPEN GLASS CAGE

Tawny steps close to the console ... Enters a command and the glass-cage lifts up. You noticed the leash between Tina and Tawny.

THE X-PLEASURE-MACHINE



ETA: 30:23

Sheila is really strong.

Tawny strokes Sheila's head and looks deep in her eyes. Sheila nods and blinks slowly.

My poor darling ... How are you? Are you able to bear the whole test?

Sheila nods once again.

MAXIMUM LEVEL OF VAGINAL THRUST

THE X-PLEASURE-MACHINE



ETA: 30:21

Yes
Mistress

Tina ... please take my cloak into the storage room over there and move a table outside.

Pull your coat off too. It is warm enough in here.

What else had
Mistress in mind?
Will she free me?

INTERMITTENT SUCKING ON BREASTS



THE X-PLEASURE-MACHINE



ETA: 30:17

Sheila looks pooped. Can she really bear the whole test?

Tina did, as requested and pulls the Table out of the storage-room.

THE X-PLEASURE-MACHINE



ETA: 30:14

Tina, please give me the long chain.

Here you are, Mistress.

VAGINAL PENETRATION STOPPED



THE X-PLEASURE-MACHINE



Tawny wraps the chains around Sheila's body and fixes it on the seat of the X-pleasure-machine.

We had to do a fixation of your body to prevent any kind of danger when we move on to the next test-stage called movement-test. The chains had to be wrapped around your body.

ETA: 30:10

Movement-test???
What does this mean?



THE X-PLEASURE-MACHINE



Oh shiiiiit, the machine starts over again ... penetrating my pussy

What do you say about Sheila, Tina? Doesn't she look gorgeous?

ETA: 29:51

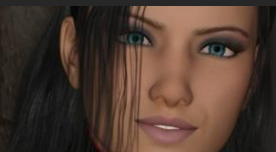
Indeed Mistress. And if I may say this, her view makes me really horny.

Tawny enters some commands into the console and the machine starts to move and brings Sheila into an upside-down position.

PROCESSING COMMAND UPSIDE-DOWN



THE X-PLEASURE-MACHINE



ETA: 29:44

Oh yessss ...
this sight ...
amazing

Tawny grabs Tina and moves her close to Sheila.
Tawny snuggles with Tina and opens her bra.

INTENSITY OF MAGIC WAND INCREASED



THE X-PLEASURE-MACHINE



ETA: 29:39

Tawny removes Tina's bra, opens her panties and caresses her on her breasts and between her legs. Tina enjoys the touches very much. After increasing Tina's arousal, she bounds her hands behind the back. Tawny removes her bodysuit too.

THE X-PLEASURE-MACHINE



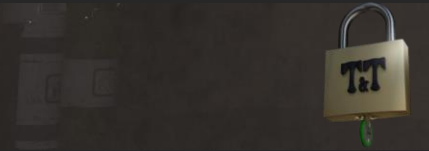
Tina recognizes the request of her Mistress, steps forward and kneels between her legs.

ETA: 29:36

gulp

Sheila, you are looking really great. We should perform such actions more often.

THE X-PLEASURE-MACHINE



Tawny spreads her legs a bit more. Tina kneels between the feet, bents the head back and starts licking Tawnys pearl.

ETA: 29:32

Oh my goddess ...
I love Tina's
tongue

Tawny moans loud and breathes faster and faster.

VIBRATING MODE ON VAGINAL PROBE SET TO LEVEL 3

THE X-PLEASURE-MACHINE



ETA: 29:28

Yeeeahhhh,
make me
cum my
darling.

Additionally to Tawny's moaning you will notice the permanent moaning and heavy breathing of Sheila.

VIBRATING MODE ON ANAL PROBE SET TO LEVEL 2

THE X-PLEASURE-MACHINE



Tawny grabs a Dildo-Stand and fixes it on the platform.

So my dear, stand up ... over this device and spread your leg.

ETA: 29:20

gulp ... I assume this Dildo-Stand is designed for me.

VIBRATING MODE ON VAGINAL PROBE SET TO LEVEL 4

THE X-PLEASURE-MACHINE



Tawny moves the anal and vaginal Dildo upwards. Then She fastens Tina's chains on the device, applies a battery-operated vibrator and turns it on.

In my opinion Sheila needs some company. Therefore you will stay with her until she is finished with the test.

ETA: 29:15

SUCKING ON BREASTS INCREASED

THE X-PLEASURE-MACHINE



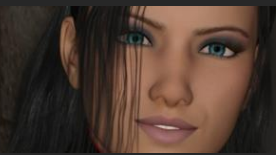
ETA: 29:11

**PROCESSING COMMAND TURN
RANDOM MOVEMENT MODE SET**

Ohhhh shiiiiit This
is more than a day ...
I will become dizzy.



THE X-PLEASURE-MACHINE



My dears, I will leave now and will watch it over the monitoring system. Enjoy your stay and don't run away *grins*

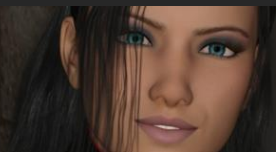
ETA: 29:05



Tina moans in her gag and receives her first orgasm this evening.

STOP ALL PENETRATIONS

THE X-PLEASURE-MACHINE



ETA: 29:02



PROCESSING COMMAND CLOSE GLASS CAGE

Tawny closes the glass-cage and leaves her girls.

THE X-PLEASURE-MACHINE



ETA: 26:44



SLOW ROTATIONS STARTED FOR TWO HOURS

THE X-PLEASURE-MACHINE



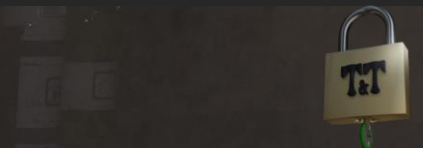
Tina will be tortured by the magic-wand without mercy and any break ...

ETA: 24:38



MAXIMUM SUCKING MODE ON BREASTS

THE X-PLEASURE-MACHINE



The batteries are emptied and the vibration stops.

ETA: 22:17

Blub ...
blub ...
blub ...
blub

BREAK TIME FOR HALF AN HOUR



THE X-PLEASURE-MACHINE



ETA: 20:43

Arrrggghh ... This is too much stretching ohhhh
my goooooood

STRETCH MODE STARTED



THE X-PLEASURE-MACHINE



Noooooooooooooooooooooooooooooooooooo not 2
Hours.....

ETA: 18:17



MAXIMUM PENETRATION ON ALL DEVICES FOR 2 HOURS

THE X-PLEASURE-MACHINE



Tina notices only the computer voice and Sheila's moaning. Unable to move, she has to endure this together with Sheila. At the moment, the computer decided to give Sheila a break and Sheila tries to sleep a bit.

ETA: 15:20



THE X-PLEASURE-MACHINE



ETA: 13:47



TESTING VICTIMS LIMITS WITHOUT LETTING HER CUMAX

THE X-PLEASURE-MACHINE



At Tomsen Manor ...

But you talked with them and you have the full acceptance of both.

I am really scared. I fear, the experiment is much too heavy for my girls. We should stop the experiment.

But I didn't consider, that they are nymphomaniacs and they didn't really understand the full impact of the test.

THE X-PLEASURE-MACHINE



Miss, I would suggest to visit the girls and make the decision there.

Yes, you are right Robert. If I abort the Experiment without their agreement, it could happen that they are peeved because they are overambitious and I know, they want to bear the whole experiment.

I hope, they are able to decide ..



THE X-PLEASURE-MACHINE



Ok Robert, take the car and we will drive to our labor and visit Tina and Sheila. You will go with me, maybe I need your help.

Yes Miss, I assume we will take the Ranger.

THE X-PLEASURE-MACHINE



My poor girls,
let's free them.

Good evening Miss Tomsen.

Hi

OK Miss, we can start.

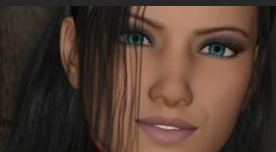
THE X-PLEASURE-MACHINE



Miss, we have already a speed of 95 mph.

Robert, could you drive a bit faster?

THE X-PLEASURE-MACHINE



Back in the labor ...

ETA: 11:53



Oh my god, look at my girls, they are all knocked out

THE X-PLEASURE-MACHINE



ETA: 11:50



AUTHORIZED PERSON DETECTED
ORDER RECEIVED
OPEN GLASS CAGE

THE X-PLEASURE-MACHINE



ETA: 11:37

Tawny checks Sheila first and asks her if she wants to be freed. Sheila declined the offer by slowly shaking her head, she wants to endure the whole test. But Tina was unable to answer so Tawny frees Tina, loosens the cuffs on the back and removes the gag.

Robert please help me, hold Tina while I remove the Dildo-Stand.

For sure Miss ...

Blub ... blub ... blub ...

THE X-PLEASURE-MACHINE



Pleeeaseeee let
me cum

ETA: 11:32

Tawny lowers the Dildo-Stand and removes the ankle-cuffs from Tina. Robert holds Tina that she didn't become unstable. In the meantime, Sheila was further penetrated on a high level of ecstasy without letting her cum.

THE X-PLEASURE-MACHINE



Miss?

ETA: 11:25

Yes Robert?

May I make a suggestion? In my mind, you should taste a bit, what the girls had to endure the last hours. You could try it, while I bring Tina back at home and take her into the bed.

Robert takes Tina. Tawny opens the rear luggage cover to place Tina there and let her sleep.

Tawny opens her eyes widely. She looks deep in Roberts eyes raising an eyebrow. But after a few moments she gulps and nods.

Fine Miss, so let's do it.

Maybe you are right. I should know, how it feels when they are helpless and alone ...

THE X-PLEASURE-MACHINE



Robert places Tina in the luggage space and than he starts to prepare Tawny.

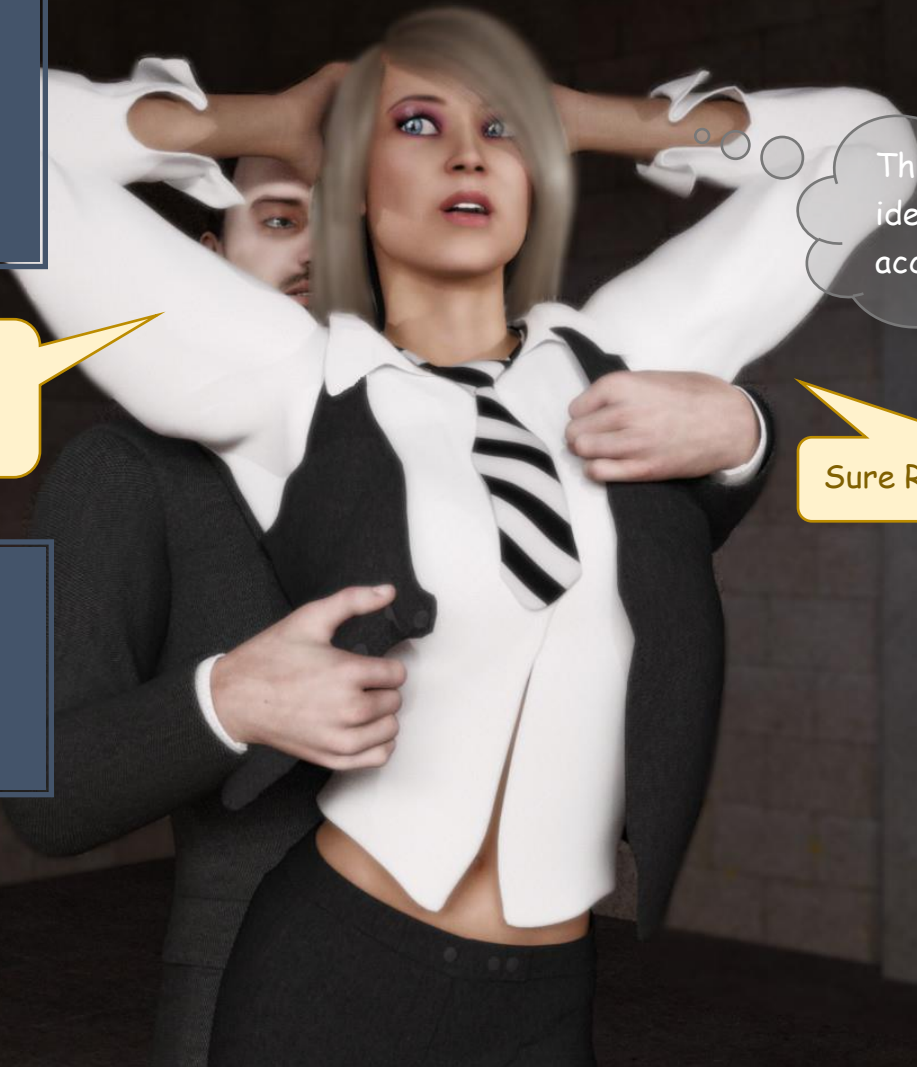
Miss, may I help you in getting ready?

Robert removes Tawnis vest and Tawny didn't complain.

ETA: 11:15

This is a crazy idea, why did I accept this?

Sure Robert ...



THE X-PLEASURE-MACHINE



Robert opens Tawny's blouse.

ETA: 11:11

And why did I become aroused when Robert opens my blouse?

Robert, I had the bad feeling that you enjoy my situation.

Ehm Yes I do Miss, if I may say this.

Robert drops the shirt on the floor and takes the armbinder from the car.

THE X-PLEASURE-MACHINE



ETA: 11:01

Robert fastens
Tawnys hands behind
the back.

Robert, may I
remember you who pays
your salary every
month?

Ah, a good point! An
increase of the salary is
overdue, isn't it?

ROOOBERTTT!!!!

Robert continues and
opens Tawny's pants.

THE X-PLEASURE-MACHINE



To stop further complaints, Robert places a gag in Tawny's mouth.

MMMMPPPPFFFFF

Oh my god, this is totally wrong. And my body betrays me.

ETA: 10:51

If you will pardon the expression, but it seems you are very aroused Miss.

Robert strokes Tawny's breasts and smiles widely.

SETTING HIGH LEVEL ON ALL DEVICES AND VICTIM IS ALLOWED TO CUM

THE X-PLEASURE-MACHINE



This must be a bad dream.

ETA: 10:43

Robert drags Tawny to the Dildo-Stand where Tina was placed half an hour before. He spreads her legs and fastens the cuffs on the spreader-bar.

By the way Miss, I exchanged the batteries in the magic wand device.

Robert pushes the Dildo with the crank upwards.

BREAK TIME - STOP ALL DEVICES

THE X-PLEASURE-MACHINE



I hope everything is ok with you, Miss Sheila.
Are you sure, you want to finish the test?

ETA: 10:40

Sheila looks in Robert's eyes and nods.



THE X-PLEASURE-MACHINE



ETA: 10:39

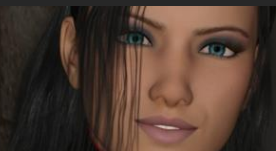
Robert steps close to Tawny, wraps his arm around her hip and looks deep in her eyes.

And now Miss Tawny, I will bring Tina to Tomsen Manor and I will take care of her. So it could take some time. Enjoy your devices and to be absolute helpless.

Robert activates the magic wand and turns to the car with a smile on his face.

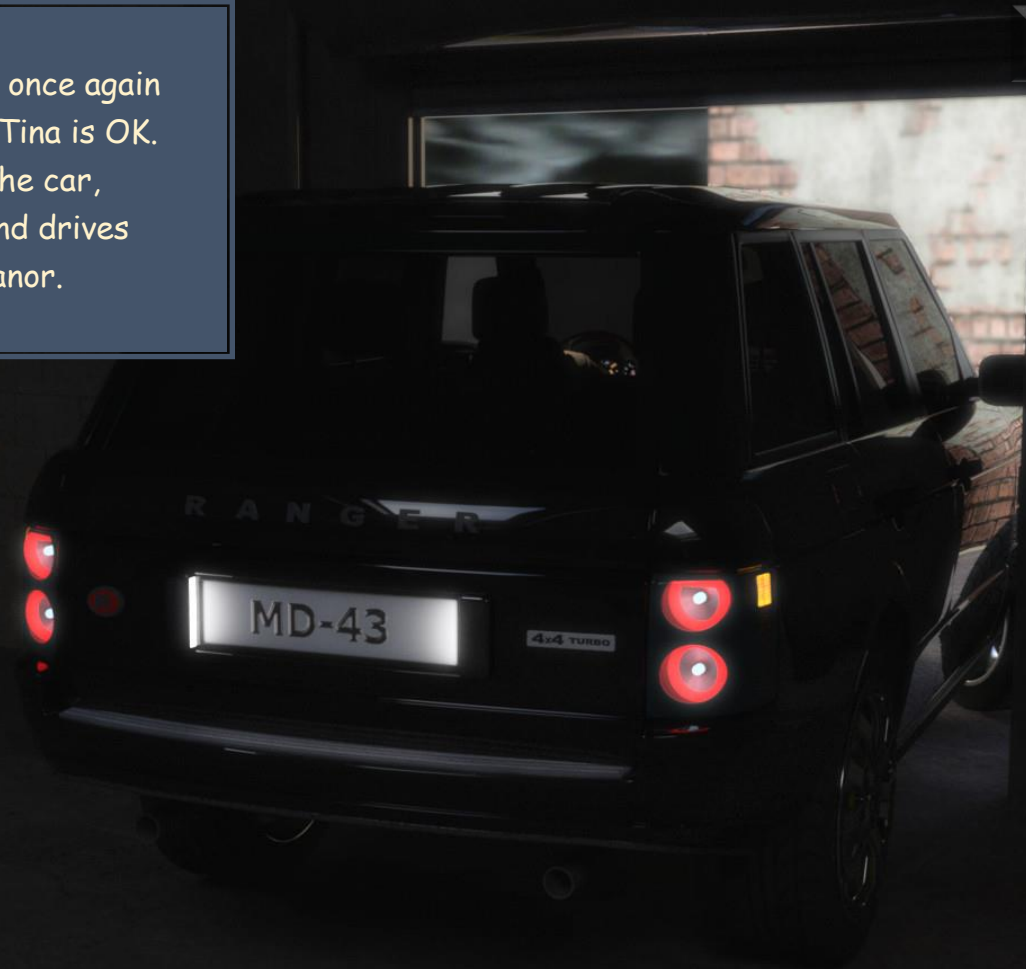
I hope it takes not too long ...

THE X-PLEASURE-MACHINE

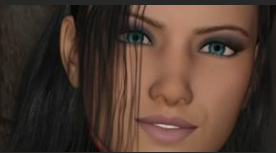


Robert checks Tina once again to be assured that Tina is OK. Then he piles into the car, starts the engine and drives towards Tomsen Manor.

ETA: 10:34



THE X-PLEASURE-MACHINE



At Tomsen Manor ...

THE X-PLEASURE-MACHINE



Robert lifts Tina out of the trunk and carries her into the house.

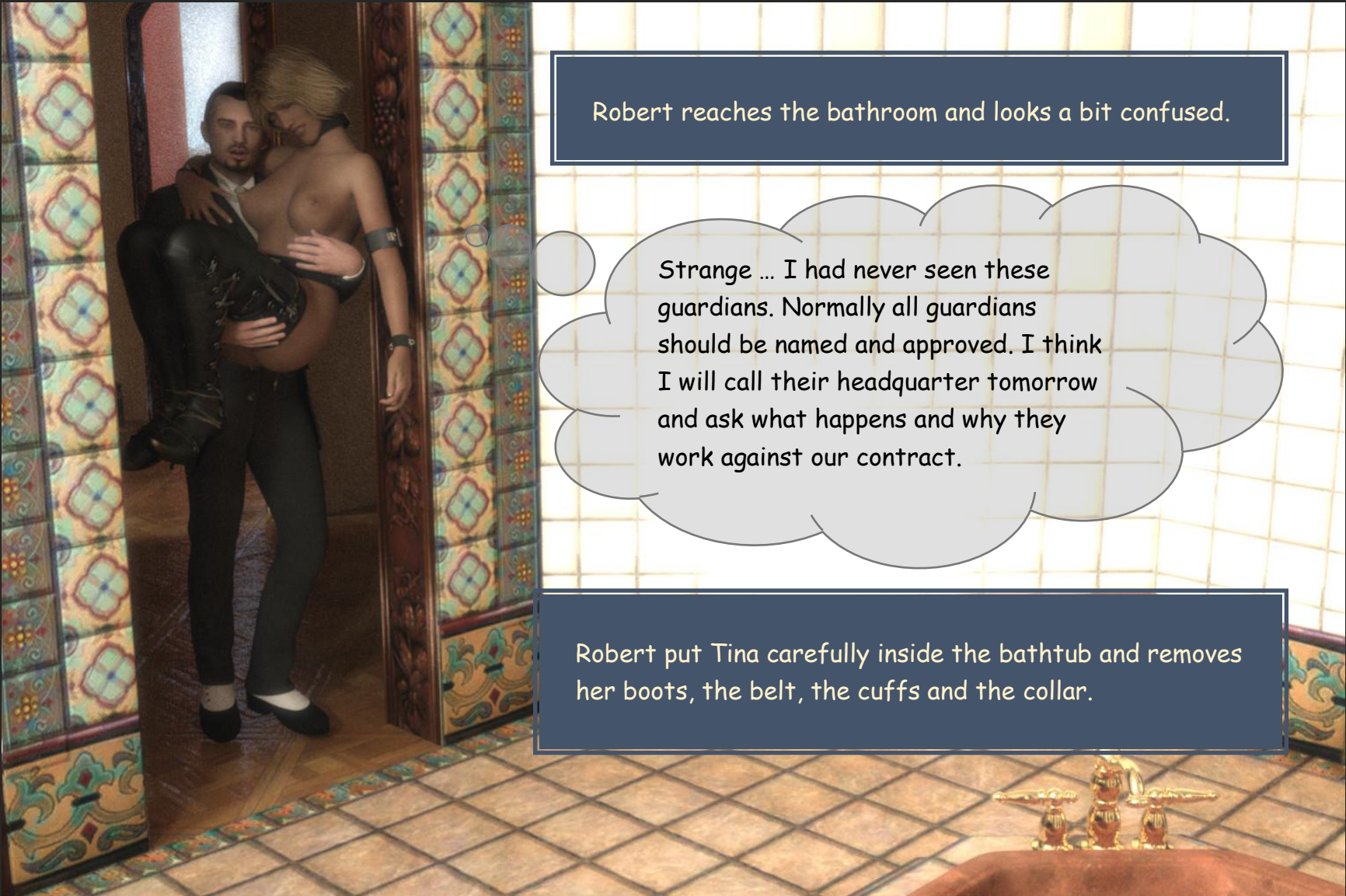
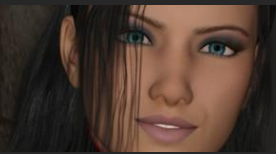
Good evening Sir Robert.

Hello Sir, how are you?

Hi Guardians, thanks fine ...



THE X-PLEASURE-MACHINE



Robert reaches the bathroom and looks a bit confused.

Strange ... I had never seen these guardians. Normally all guardians should be named and approved. I think I will call their headquarter tomorrow and ask what happens and why they work against our contract.

Robert put Tina carefully inside the bathtub and removes her boots, the belt, the cuffs and the collar.

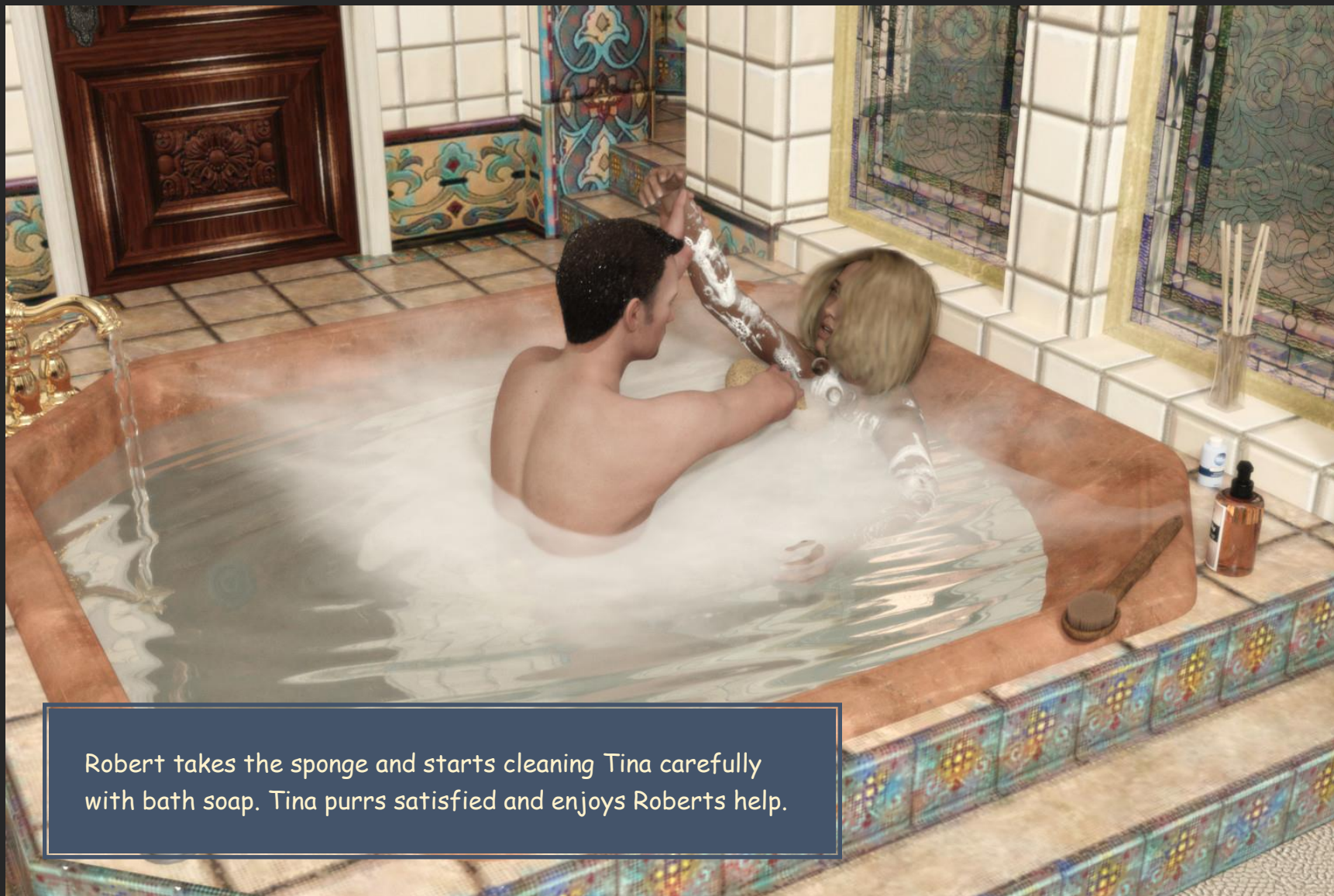
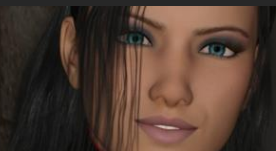
THE X-PLEASURE-MACHINE



Hot water will help Tina regenerating.

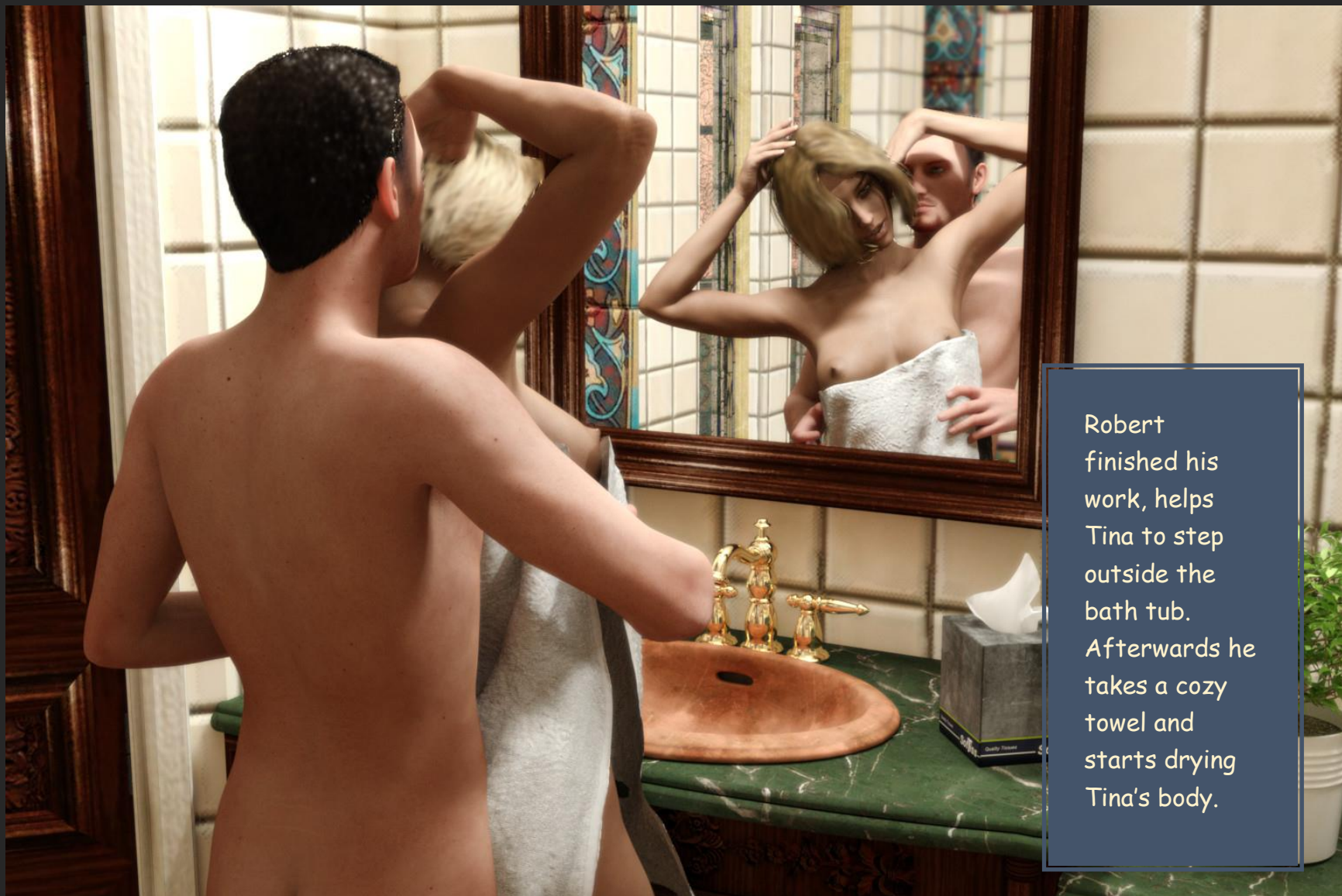
Robert tries to help Tina with the wash brush but it is hard to reach her from outside of the bathtub. He removes his pants and jumps into the bathtub.

THE X-PLEASURE-MACHINE



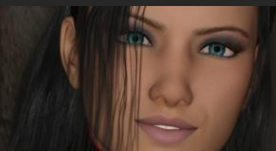
Robert takes the sponge and starts cleaning Tina carefully with bath soap. Tina purrs satisfied and enjoys Roberts help.

THE X-PLEASURE-MACHINE



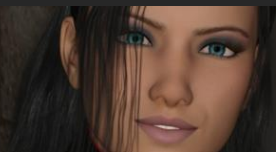
Robert finished his work, helps Tina to step outside the bath tub. Afterwards he takes a cozy towel and starts drying Tina's body.

THE X-PLEASURE-MACHINE



Then he guides Tina to her sleeping room. In the meantime Tina is able to walk with the own feet but she is happy that Robert guides her with his arm wrapped around her hip. It seems the bath helped her.

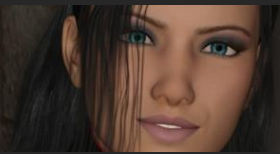
THE X-PLEASURE-MACHINE



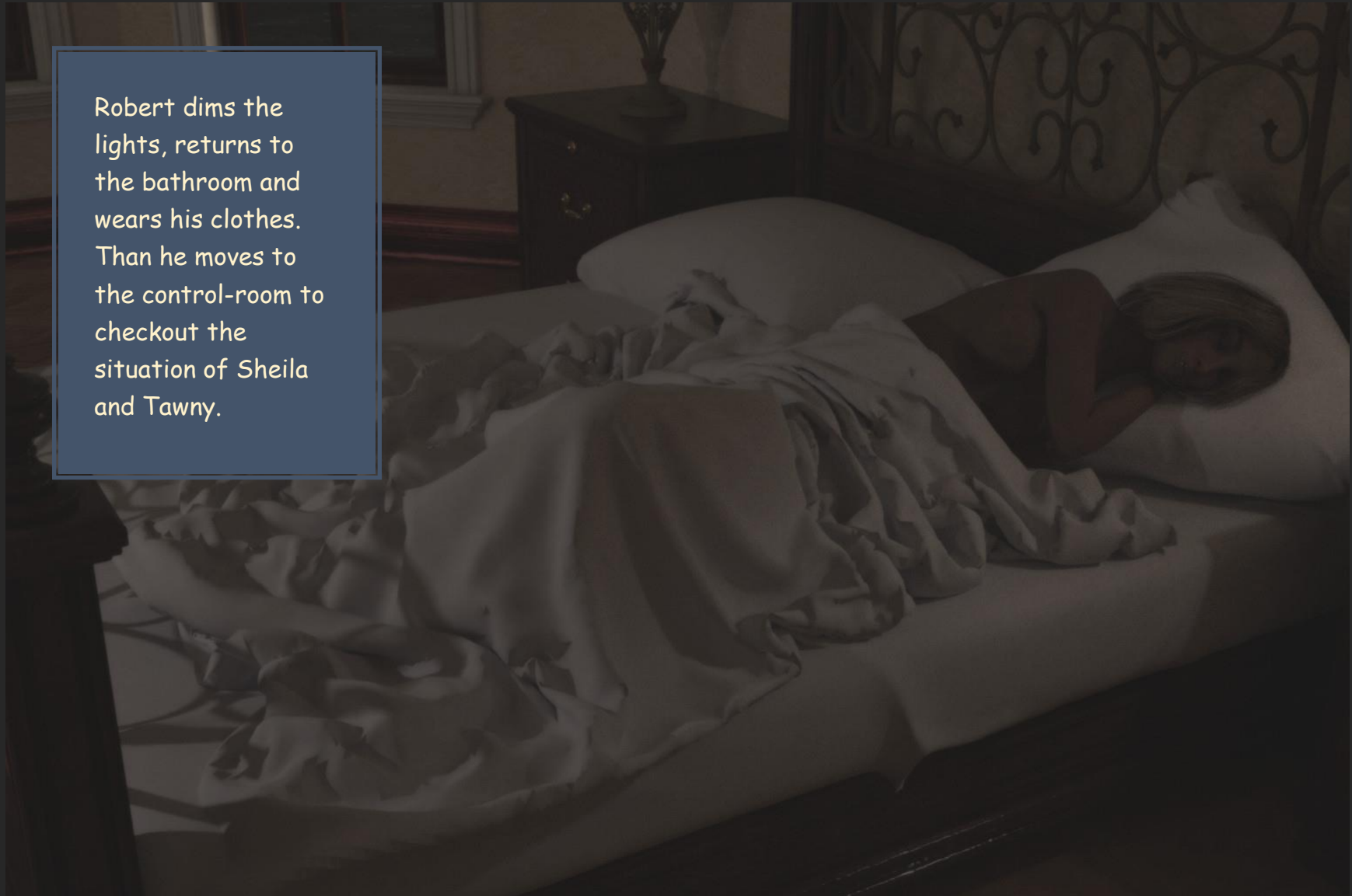
Tina jumps into the bed and he is really sleepy. Robert watches her until she slept away.



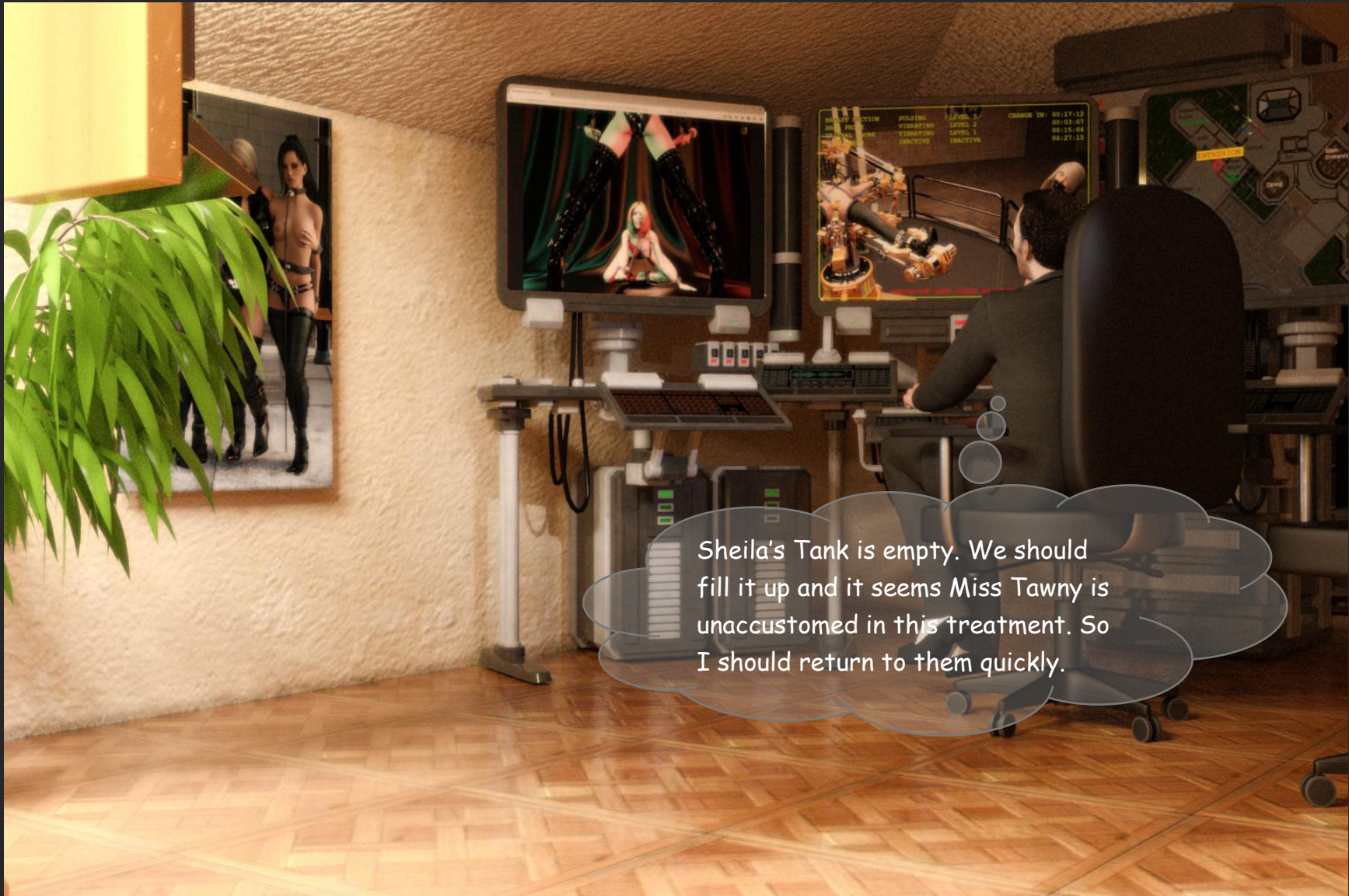
THE X-PLEASURE-MACHINE



Robert dims the lights, returns to the bathroom and wears his clothes. Than he moves to the control-room to checkout the situation of Sheila and Tawny.



THE X-PLEASURE-MACHINE



Sheila's Tank is empty. We should fill it up and it seems Miss Tawny is unaccustomed in this treatment. So I should return to them quickly.

THE X-PLEASURE-MACHINE



At the labor ...

ETA: 04:35

What happens with Robert? He should be back since ages? I have a really bad feeling.

CHANGING STIMULATION-DEVICES AND LEVELS IN 30 SECONDS INTERVAL



THE X-PLEASURE-MACHINE



ETA: 02:47

ROBERT!!!
I do not like
this kind of
jokes ...
You will
regret this ...

REMOTE COMMAND PROCESSED

CLOSING GLASS CAGE

THE X-PLEASURE-MACHINE



What happens? The cage was closed and the timer was disabled by remote. Additionally the X-pleasure-machine is set to maximum pain.

And last not least, Robert exchanged the batteries at Tawny's magic wand. When they are fully charged than they will work for about 15 hours.

Was this a bad joke by Robert?

Did something different happen?

So stay tuned on this channel and hope for answers ;-)

END ?