



SHE HAD NO WAY OF KNOWING THAT HAVING A WIFE THAT WAS STRONGER THAN ME HAD BECOME A VERY REAL FEAR FOR ME. I WAS SURPRISED THAT HER CHANGING BODY WAS MAKING ME FEEL SO UNCOMFORTABLE, AS I HAD ALWAYS BEEN SELF CONFIDENT, AND NOT ONE TO FEEL THREATENED BY HER PHYSICAL ATTRIBUTES. IN FACT HER TALL HEALTHY PHYSIQUE WAS ONE OF THE THINGS THAT FIRST ATTRACTED ME TO HER IN COLLEGE. WHEN I FIRST MET HER IN COLLEGE SHE WAS A STAR ATHLETE AND WAS FOUR INCHES TALLER THAN ME (10CM), BUT I NEVER LET THAT BOTHER ME.

K-Styler

(C) KSTYLER

***TO BE CONTINUED***





BUT NOW THE CONSTANT CHANGES TO HER BODY IN BOTH STRENGTH AND SIZE, WAS A VERY DIFFERENT MATTER. I TRIED TO THINK OF WAYS THAT I COULD STOP HER FROM WORKING OUT AND GET THINGS BACK TO THE WAY THEY WERE BEFORE THE HOME GYM. BY THIS TIME JANET HAD DEVELOPED A TRUE PASSION FOR WEIGHT LIFTING AND CAREFULLY TRACKED HER RESULTS. SHE RESISTED EVERY SUGGESTION I MADE TO TAKE UP ANOTHER SPORT. SHE LOVED SEEING HOW HER BODY WAS CHANGING AND I COULD TELL SHE WAS BECOMING MORE CONFIDENT AS HER STRENGTH GREW. YOU COULD ALMOST SEE A COCKINESS IN HER THAT WASN'T THERE BEFORE.

KStyler

(C) KSTYLER

ONE NIGHT AFTER DINNER WE WERE TALKING ABOUT WHOSE TURN IT WAS TO DO DISHES.



WHY IS SHE STILL DIRTY?

K-Styler

(C) KSTYLER



LET'S SEE HOW STRONG YOU ARE. IF I BEAT YOU THIS WILL BE YOUR ROLE UNTIL YOU BEAT ME, UNDERSTOOD?

SHE SUGGESTED THAT WE ARMWRESTLE FOR IT. I WAS TAKEN ABACK AS SHE HAD NEVER BEFORE ENGAGED ME IN A TEST OF STRENGTH. I OF COURSE WANTED TO AVOID THIS AS I DID NOT WANT TO HAVE CONFIRMED MY UNEASY SUSPICION THAT SHE HAD ALREADY SURPASSED ME IN STRENGTH. I SAID, "ITS OKAY I'LL DO THE DISHES"

K. Styler

(C) KSTYLER



SHOW  
ME WHAT  
YOU'VE  
GOT..PUSSY  
BOY

JANET INSISTED, GRABBING  
MY HAND AND PUSHING MY  
ELBOW ON THE TABLE. I HAD  
NO OPTION BUT TO GO  
THROUGH WITH THE MATCH.

K-Styler

(C) KSTYLER



HE  
LOOKS SO  
HESITANT

JEZZ  
THOSE BICEPS  
!

I DECIDED TO USE ALL MY STRENGTH, CONCENTRATION, AND WILL-POWER, TO AT LEAST MAKE A GOOD SHOW OF IT, IF NOT WIN IT OUTRIGHT. I DETERMINED THAT A FULL BLAST WOULD BE THE WAY TO GO RATHER THAN TRYING TO MATCH HER ENDURANCE.

*K-Styler*

(C) KSTYLER



COME ON,  
DON'T BE  
AFRAID...

I THINK YOU  
ARE.

EUH..  
I'M NOT  
AFRAID..I'M  
EUH..JUST..

*K-Styler*

(C) KSTYLER



IS HE  
FORCING?

WHAT'S  
WRONG WITH  
ME?

WE BOTH STARTED SLOWLY TESTING EACH OTHER'S STRENGTH, AND THEN I SUDDENLY PUT EVERYTHING I HAD INTO ONE BLAST. I WAS RED WITH EXERTION PUSHING MY ENTIRE BODY WEIGHT AGAINST HER ARM AND THE RESULT WAS ABSOLUTELY NOTHING. HER ARM DID NOT WAVER AN INCH.

K-Styler

(C) KSTYLER





THAT CAN'T BE TRUE... I REALLY FEEL HE CAN'T RESIST

OUCH.. I CAN'T STAND THIS.. HOW CAN I ESCAPE?

DID YOU START?

WAIT..

(C) KSTYLER

K-Stylez



HAS HE ALWAYS BEEN SO WEAK ? AND I CONTENT MYSELF WITH THIS FOR SO MANY YEARS ?

I LOOKED INTO HER FACE TO SEE THAT SHE DID NOT SEEM TO BE THE LEAST BIT TAXED BY THE EFFORT, AND STARTED TO GIGGLE AT MY PATHETIC ATTEMPTS.

K-Stylez

(C) KSTYLER



COME ON HARDER ! TRY YOUR BEST !

FUCK THERE IS SOMETHING WRONG...IT IS SO HUMILATING !

K-Styler

(C) KSTYLER

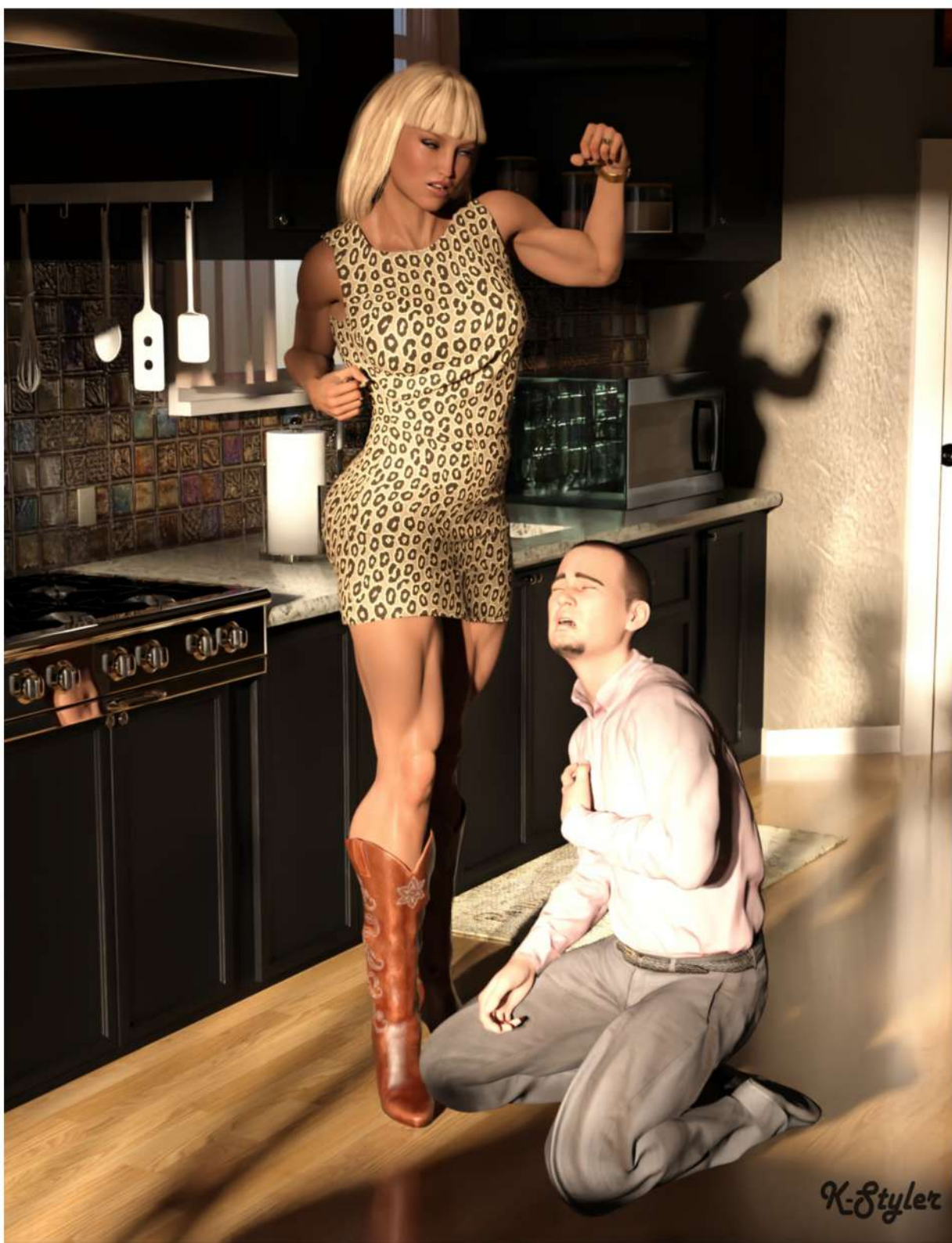


OK LET'S  
FINISH...1...2...3

**CRAAACC!**

**OUCHH!**

WITH NO EFFORT SHE SLAMMED MY  
HAND TO THE TABLE AND HER SMILE  
OF AMUSEMENT CHANGED TO A  
KNOWING SMILE OF POWER AND  
SUPERIORITY AS HER  
OVERWHELMINGLY DOMINANT  
STRENGTH HAD BEEN CONFIRMED.



I WAS FLABBERGASTED, AS I NEVER EXPECTED THAT SHE HAD BECOME SO MUCH STRONGER THAN ME. I TRIED TO PUT UP A BRAVE FACE BUT I WAS THOROUGHLY EMBARRASSED BY HAVING JANET'S DOMINANCE CONFIRMED WITH SUCH AUTHORITY. JANET WAS OBVIOUSLY ELATED AS SHE REPEATEDLY SAID "I CAN'T BELIEVE HOW MUCH STRONGER I AM THAN YOU, THAT WASN'T EVEN CLOSE", "I THINK YOU COULD HAVE USED TWO HANDS AND I WOULD STILL WIN". I SAID "OKAY, OKAY YOU DON'T HAVE TO RUB IT IN", AND TRIED TO BE A GOOD SPORT BY SAYING CONGRATULATIONS. I PRETENDED LIKE NOTHING HAD CHANGED, BUT INSIDE I WAS IN TURMOIL; I FELT MY ENTIRE WORLD HAD BEEN TURNED UPSIDE DOWN AND NOW EVERYTHING WOULD CHANGE.

K-Styler

(C) KSTYLER

***TO BE CONTINUED***



BEATING ME IN A TEST OF STRENGTH ONLY SERVED TO MAKE JANET EVEN MORE OBSESSED IN PUMPING IRON AND INCREASING HER STRENGTH AND SIZE. SHE INCREASED HER WORKOUTS TO TWICE A DAY AND BEGAN TO EAT LARGER AMOUNTS OF FOOD THROUGHOUT THE DAY IN ORDER TO PUT ON WEIGHT. SHE READ EVERYTHING SHE COULD ABOUT BODYBUILDING, WEIGHT LIFTING AND NUTRITION AND BEGAN TAKING ALL KINDS OF SUPPLEMENTS.

(C) KSTYLER

YOU  
PROBABLY KNOW  
YOU'RE VERY PRETTY  
DON'T YOU ? WELL, WITH  
THIS YOU'LL REACH THE NEXT  
STEP..EVERY MAN WILL  
BECOME MAD LOOKING AT  
YOU...AND WOMEN WILL  
CERTAINLY TOO!



(C) KSTYLER

K.Styler



THIS WILL BECOME HARD ...AS A DICK!

I'LL INVITE YOU TO MY PLACE...I'VE GOT SOME NICE PLASTIC SPECIMEN HARD AS HELL !! LOL I'M KIDDING !!

WELL, THEY ARE NOT ALL HARD

TOO BAD! ANYWAY GIVE ME YOUR NUMBER, I'M SURE WE'LL BECOME VERY CLOSE...DON'T MOVE YOUR HAND !

**MARCH**

11PM...  
WHERE WAS SHE ?

WHO IS THIIIS ?

HI  
HONEY...I'M  
ON THE PHONE  
WITH KARA

I'LL TELL  
YOU LATER

SHE'S MY  
TRAINING  
PARTNER



*KStyler*

(C) KSTYLER

BEING STRONGER THAN ME WAS OBVIOUSLY A TURN-ON FOR HER AND SHE CONCENTRATED ON EXPANDING THE ALREADY LARGE GAP IN OUR PHYSICAL STRENGTHS. HER ALREADY IMPRESSIVE BODY WAS GROWING AT AN EVEN FASTER RATE AS HER WORKOUTS BECAME MORE INTENSE. I COULD SEE HER MUSCLES WERE BECOMING LARGER ROUNDER AND HARDER WITH EACH PASSING WEEK. HER BODY WAS LOOKING MORE AND MORE POWERFUL AND SHE WOULD RECEIVE STARES FROM PEOPLE WHENEVER WE LEFT THE HOUSE.



(C) KSTYLER

THERE WAS ALSO A HUGE INCREASE IN HER LEVEL OF COCKINESS. SHE SEEMED TO BE BOSSIER THAN BEFORE, ASKING FOR ME TO BRING HER WATER OR A TOWEL DURING HER WORKOUTS. EVERY EVENING MOSTLY FOR JANET'S AMUSEMENT SHE WOULD INSIST ON ARM WRESTLING TO SEE WHO WOULD CLEAN THE DISHES.






SO I'VE BEEN PROMOTED AS A DIRECTOR...I MANAGE 300 GUYS NOW

WOW...

WITH EACH PASSING DAY IT BECAME A MORE RIDICULOUS CONTEST, UNTIL I WOULD WASH DISHES AUTOMATICALLY.



SERIOUSLY WHAT ARE YOU DOING ? YOU SPEND 10 HOURS AT THE OFFICE AND NOTHING CHANGES..YOU'RE STILL A WHAT ? A SPECIALIST ?

SO I'LL KICK YOUR BOSS ASS!

I KNOW..BUT THERE IS AN IMPORTANT PROJECT THAT MIGHT HELPS..YOU REMEMBER WE HAVE THE YEARLY SOIREE AT MY COMPANY FRIDAY ..NEXT WEEK..MY BOSS WE'LL BE THERE



PLEASE STOP...IT'S HUMILIATING

AH AHA I KNOW !! BUT I LIKE SEEING YOUR LITTLE BOTTOM SHAKING!

(C) KSTYLER

APRIL



HOLY SHIT...WHO IS THIS ?

HUMM... I SUPPOSE THIS IS JANET...MY WIFE

NICE CATCH BOSS...SHE'S ...WOW !

AT THE YEARLY COMPANY EVENT. LEE WAS ALWAYS FOLLOWING ME. I KNEW HE WANTED THE TEAM LEADER ROLE TOO..BUT HOW COULD I GET IT ?...HE WAS CLEVER, FUNNY AND CERTAINLY WORKING HARDER...UNTIL THE MOMENT THINGS TOOK A DIFFERENT TURN

K.Styler

(C) KSTYLER



AMAZING !  
HOW CAN THIS  
LOSER DATE AN  
AMAZON LIKE HER  
??

JESUS !  
HOW POSSIBLE ?  
INTRODUCE ME TO  
HER !

SURE!

FUCK I WAS NOT  
EXPECTING THIS...SHE'S A  
BOMB !





GOSH  
WHAT'S IN HIS  
TROUSER?

(C) KSTYLER