



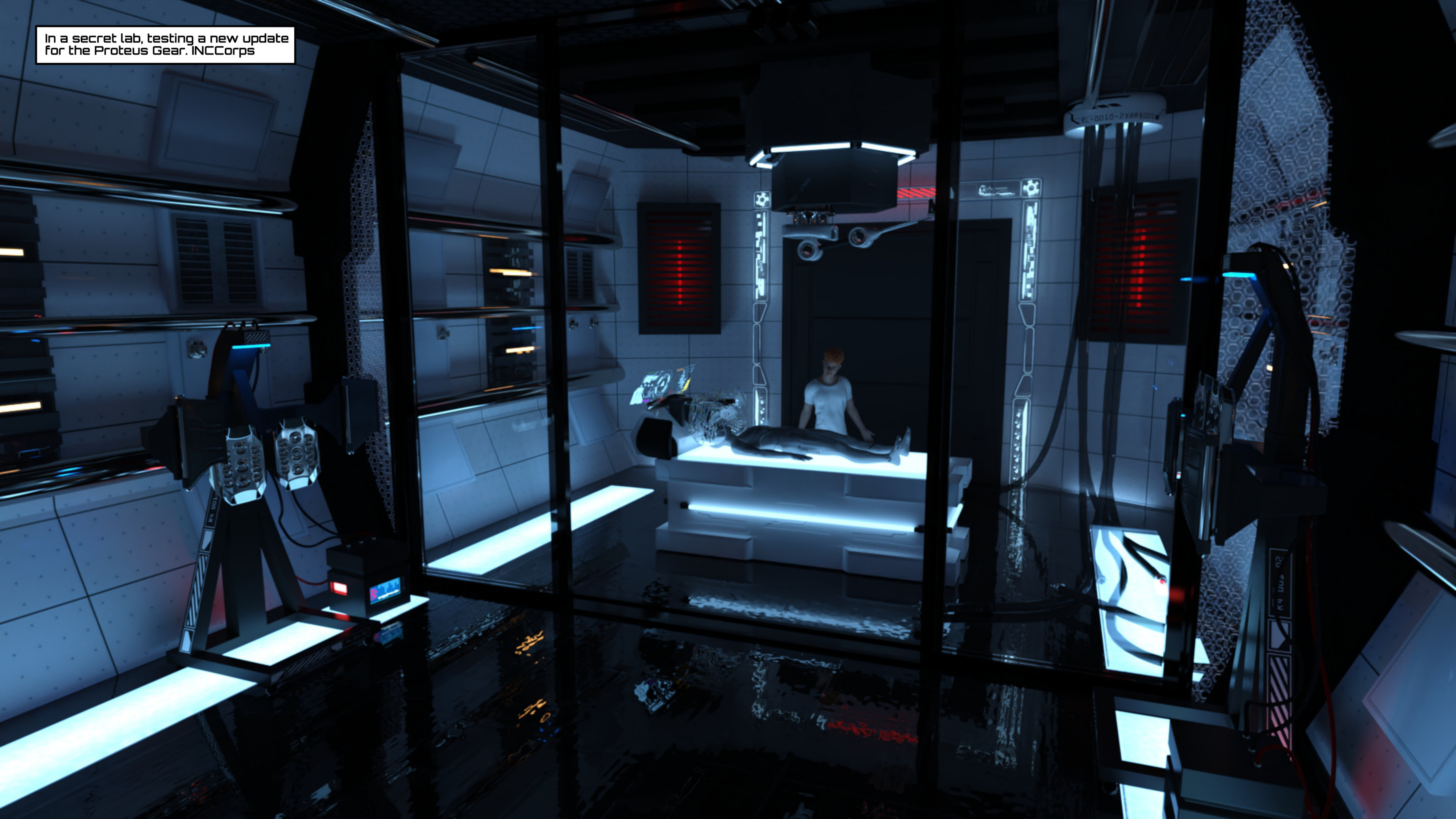
# Virtual Dreams

ch.3

AstralBot3D



In a secret lab, testing a new update  
for the Proteus Gear. INCCorps

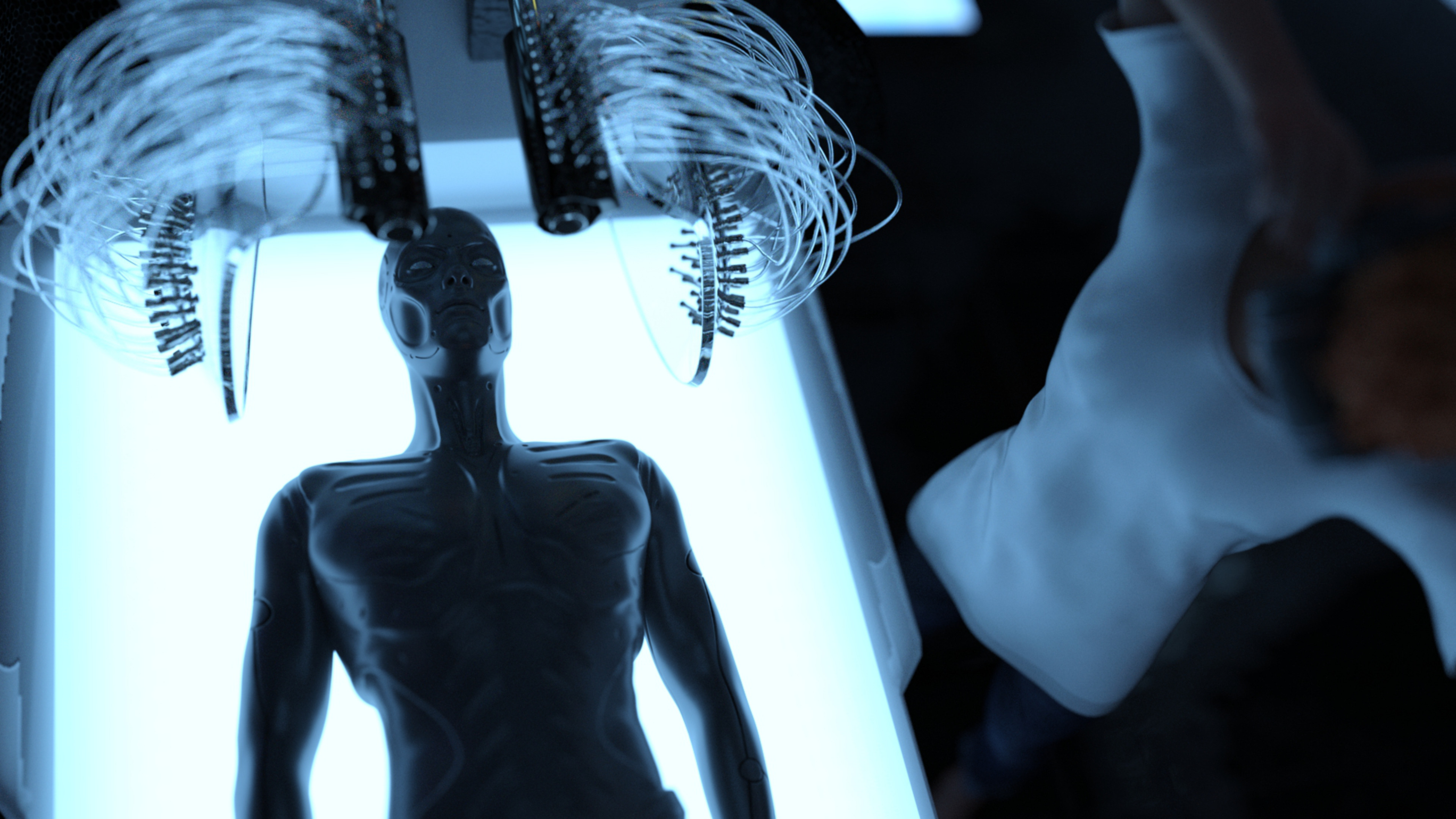




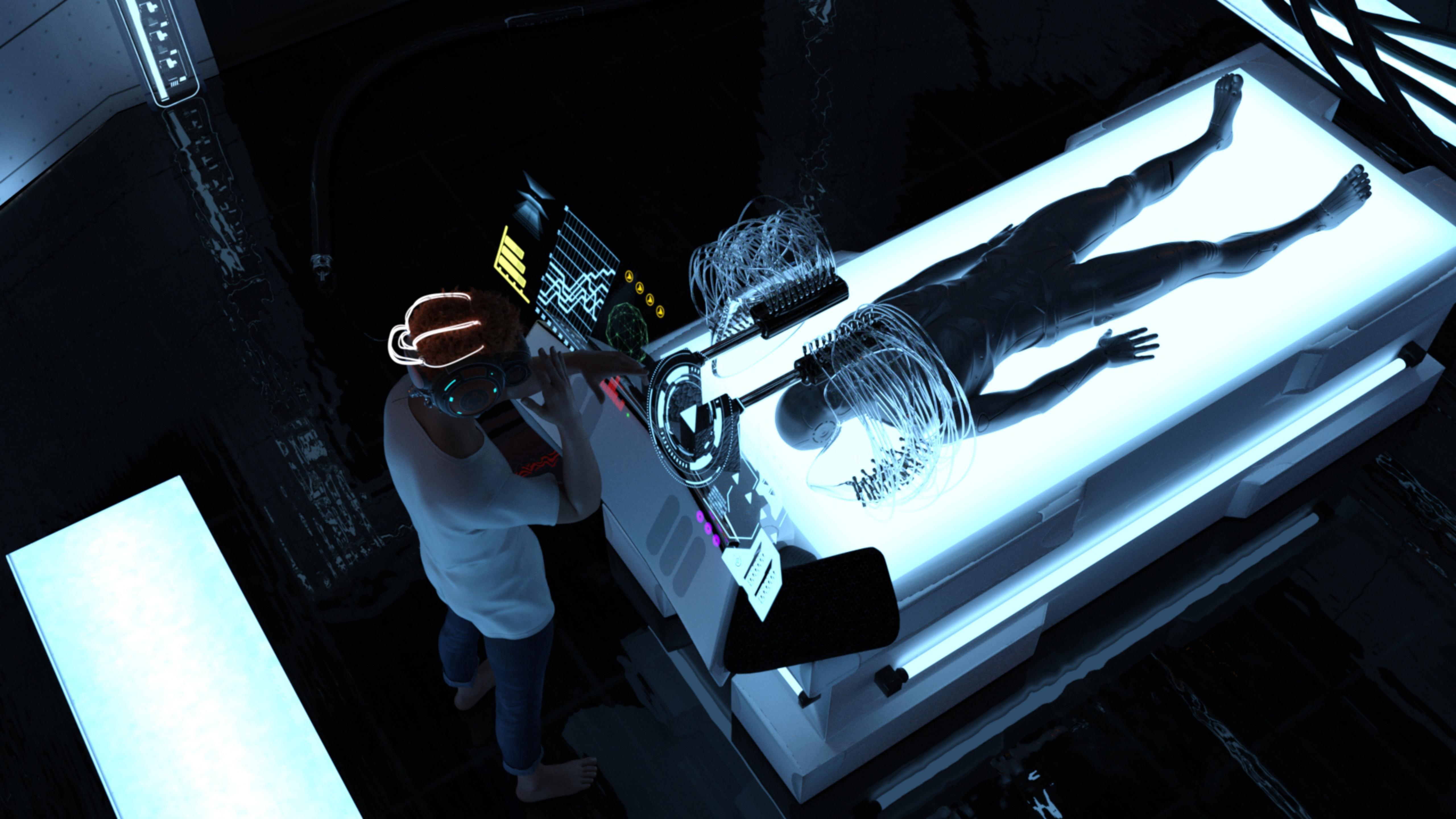


LET'S SEE HOW  
GOOD THIS NEW  
MODEL IS.











Establishing Link...







WHRRRR

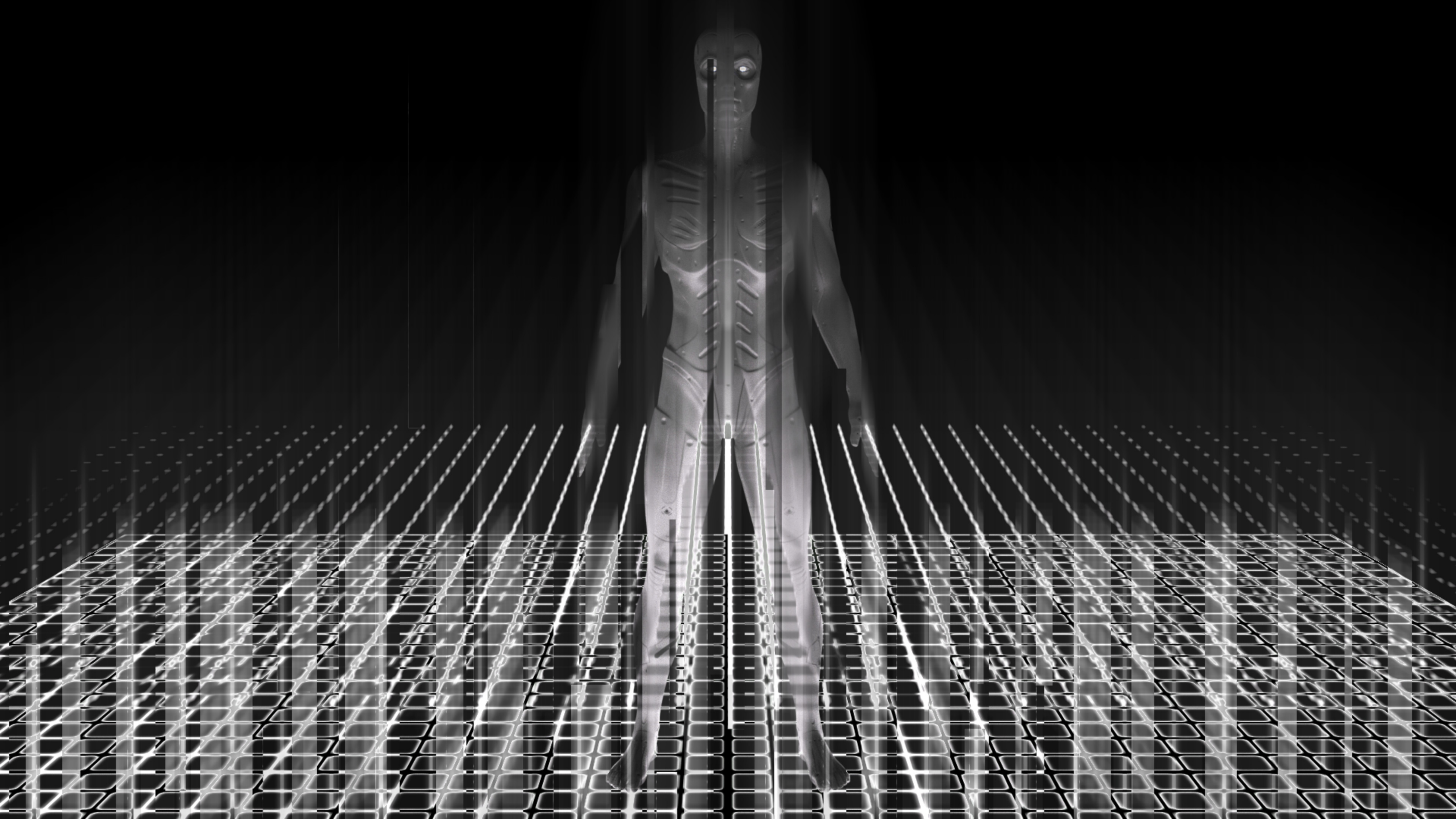
WHRR



A futuristic robot with a metallic, humanoid form stands centrally. Its eyes are glowing with a bright blue light. Above its head, two vertical black rectangular units are connected to a dense, chaotic web of thin, translucent fiber optic cables that fan out in all directions. The background is a solid, vibrant blue. The text 'Link Connected' is superimposed over the robot's chest in a clean, white, sans-serif font.

Link  
Connected









WHERE IS THE  
UPDATE FILE?

GUESS I'LL HAVE  
TO LOAD THE FILE  
MYSELF.



LOAD PROJECT  
FILE.

INCOMPATIBILITY  
MODEL DETECTED.

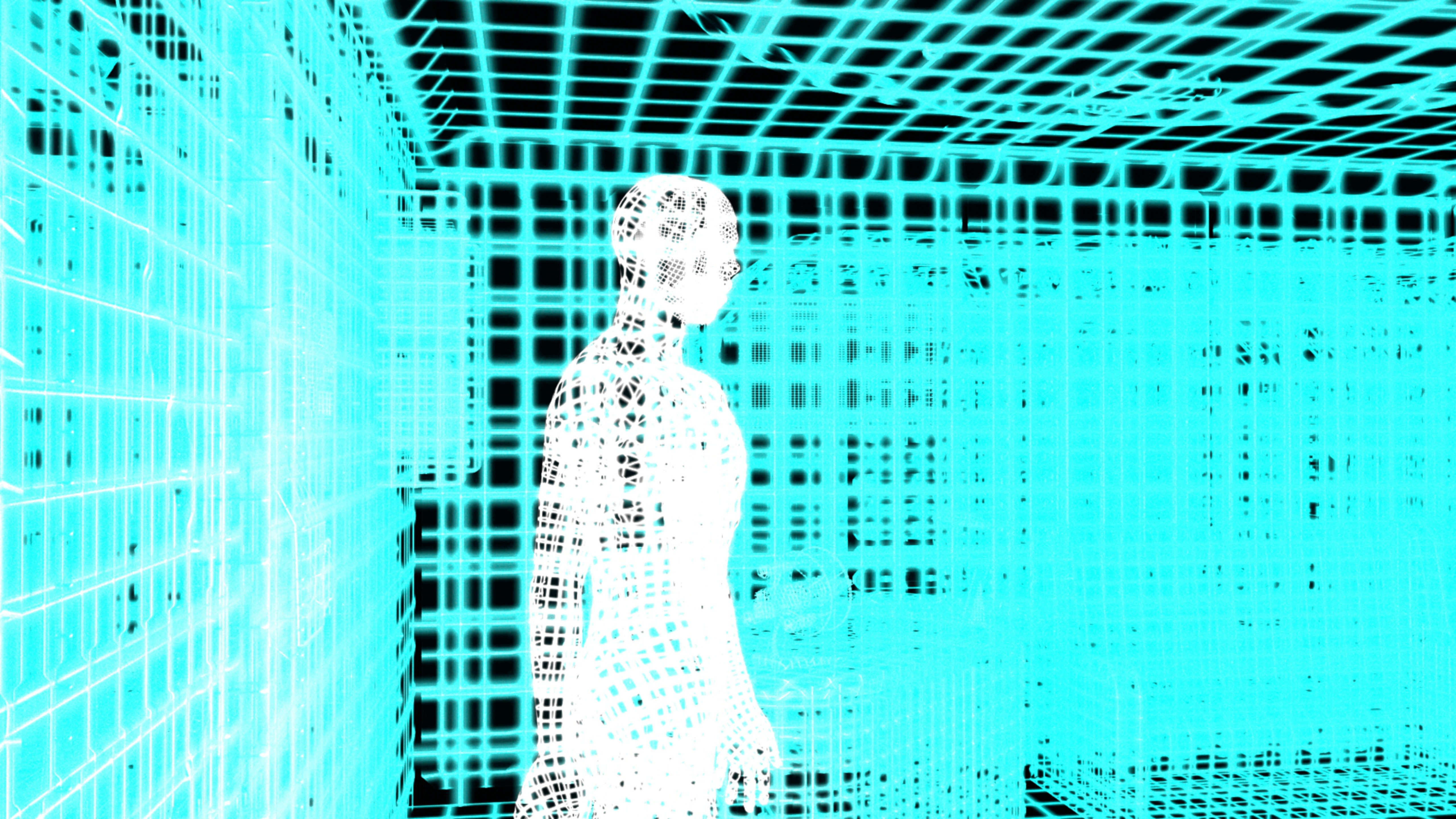
AUTO ADJUSTING  
MODEL TO NEW MODEL  
FOUND IN PROJECT  
FILE.

ARE YOU SURE  
YOU WANT TO  
CONTINUE?

YES.

Loading...









W-WAIT A  
SECOND!

THIS ISN'T THE  
PROJECT FILE I  
REVIEWED LAST  
NIGHT.





LOAD IN  
MIRROR.









THIS ISN'T THE PROJECT FILE I HAVE  
TO PLAYTEST...





...BUT I'M NOT GONNA PASS  
UP THIS OPPORTUNITY TO PLAY  
WITH THIS HOT AVATAR.



Wow!

THIS CHARACTER IS  
PACKING SOME SERIOUS  
GOODS.

THIS COSTUME  
IS RIDING UP MY  
BUTT CHEEKS.







YOU GOTTA APPRECIATE A GOOD BODY  
WHEN YOU SEE ONE.

BUT THERE'S A BIG DIFFERENCE WHEN  
YOU'RE ACTUALLY IN ONE.




A close-up of a woman with long, straight red hair and dark eye makeup, looking directly at the camera with a slight smile. She is wearing a dark, high-collared garment. The background is dark, with a bright circular light source visible behind her. Two comic-style speech bubbles are overlaid on the right side of the image.

IS THIS THE NEW  
UPDATE EVERYONE WAS  
WORKING ON OVER  
THE WEEKEND?

MAYBE SOMEONE  
UPLOADED THE WRONG  
PROJECT FILE.



A woman with short red hair and black gloves is sitting on a red couch. She is looking upwards and to the right. The room is dark, with a framed picture on the wall behind her. The picture shows a cityscape with blue lights. The woman is wearing a black strapless top and black stockings. She is holding a black object in her right hand.

THERE WOULDN'T BE  
ANY HARM IN EXPLORING  
THIS BODY SINCE IT'S  
ALL VIRTUAL.

IT'S IMPORTANT THAT  
EVERYTHING IS WORKING  
AS INTENDED.

MY NIPPLES ARE  
REACTING TO THE COLD  
TEMPERATURE OF THE  
ROOM... CHECK!





MOVEMENTS ARE  
WORKING GOOD.

I WONDER WHO DESIGNED THIS  
CHARACTER BECAUSE SHE'S MY  
TYPE OF GIRL.



HONESTLY, I NEVER THOUGHT OF PLAYING AS A CHICK CAUSE I'M A GUY AND ISN'T IT WEIRD TO PLAY AS A GIRL IF I'M A GUY?







I GUESS THERE'S A FIRST  
FOR EVERYTHING...

MY FIRST ORGASM IN A WOMAN'S BODY...

rub





GROPE





000H





I CAN GET USED TO THIS.

I'M STARTING TO UNDERSTAND WHY GUYS  
MAIN FEMALE CHARACTERS.





MMH



BUT SOMETHING DOESN'T  
ADD UP---





THESE BREASTS...





...FEELS FANTASTIC!

THE HAPTIC FEEDBACK MUST'VE  
IMPROVED WITH THE NEW MODEL.





I WANT MORE!











SLIP



V-VIBRATIONS?!

THE DEVELOPERS NEED TO  
ADD AN OPTION TO ADJUST  
THE VIBRATION SENSITIVITY.

FEELS LIKE MY BODY JUST  
SPIKED WITH PLEASURE!

NGHH





ALMOST  
THERE.

IT'S ENTICING TO HEAR THE MOANS  
COMING OUT OF THESE LIPS.

MOAN





ah

ah





Aahhhhhh

Mhh





SOMETHING WARM  
IS OOZING BETWEEN  
MY THIGHS.

GUESS THIS IS WHAT A FEMALE  
ORGASM FEELS LIKE.



THE DEVELOPERS DID A GREAT  
JOB WITH THIS NEW UPDATE.

I'M GONNA NEED TO MY OWN PERSONAL  
COPY OF THIS UPDATE, BUT THEN I'LL  
NEED A NEW ANDROID MODEL TOO WHICH  
IS OUT OF MY BUDGET...







GOSH, WOMEN  
ARE SO LUCKY TO  
SEE THIS VIEW.



A woman with long reddish-brown hair is lying on her back on a red mat. She is wearing black gloves and a silver ring. Her hands are resting on her breasts. The mat has a yellow lightning bolt design and a blue target pattern. The background is a wooden floor.

THESE BREASTS ACTUALLY FEEL HEAVY ON MY CHEST WHEN I LAY DOWN. GOOD TO KNOW THAT THE PHYSICS ARE REALISTIC.

FEELS LIKE THEY'RE TRYING TO SLIDE RIGHT OFF TO THE SIDE.









I'M STARTING TO HEAT UP.



THERE'S NO WAY I'M ABLE TO PLEASURE  
THIS PUSSY THIS GOOD.

I DON'T HAVE ANY EXPERIENCE MASTURBATING  
AS A WOMAN. YET, SOMEHOW MY FINGERS ARE  
HITTING THE RIGHT SPOTS IN MY VIRTUAL PUSSY.





A woman with dark hair is lying on her back on a red surface. She is wearing a black strap across her chest. A black vibrator is positioned against her left breast. She has a look of pleasure on her face, with her mouth slightly open. The background is dark and out of focus.

IT MUST BE THE NEW MODEL THAT  
I'M LINKED WITH.

I'M GETTING EXCITED I CAN FEEL  
MY HEART BEATING THROUGH MY  
LEFT BREAST.

PLEASURING MY BOOBS AND MY PUSSY  
AT THE SAME TIME FEELS SO FUCKING  
SENSATIONAL!

ahh





**SLIP**

**SLIP**

**SLIP**













I'LL REPORT TO  
THE TEAM THAT THE  
I RECEIVED THE  
WRONG FILE.

IT WAS FUN  
TESTING THIS  
UPDATE.

MAYBE I CAN  
REQUEST NEW  
FEATURES FOR  
THIS UPDATE.





ALRIGHT...  
TIME FOR ME  
TO LOGOUT.

ERROR!

CROSS PLAY  
CONVERSION IS  
INCOMPLETE.





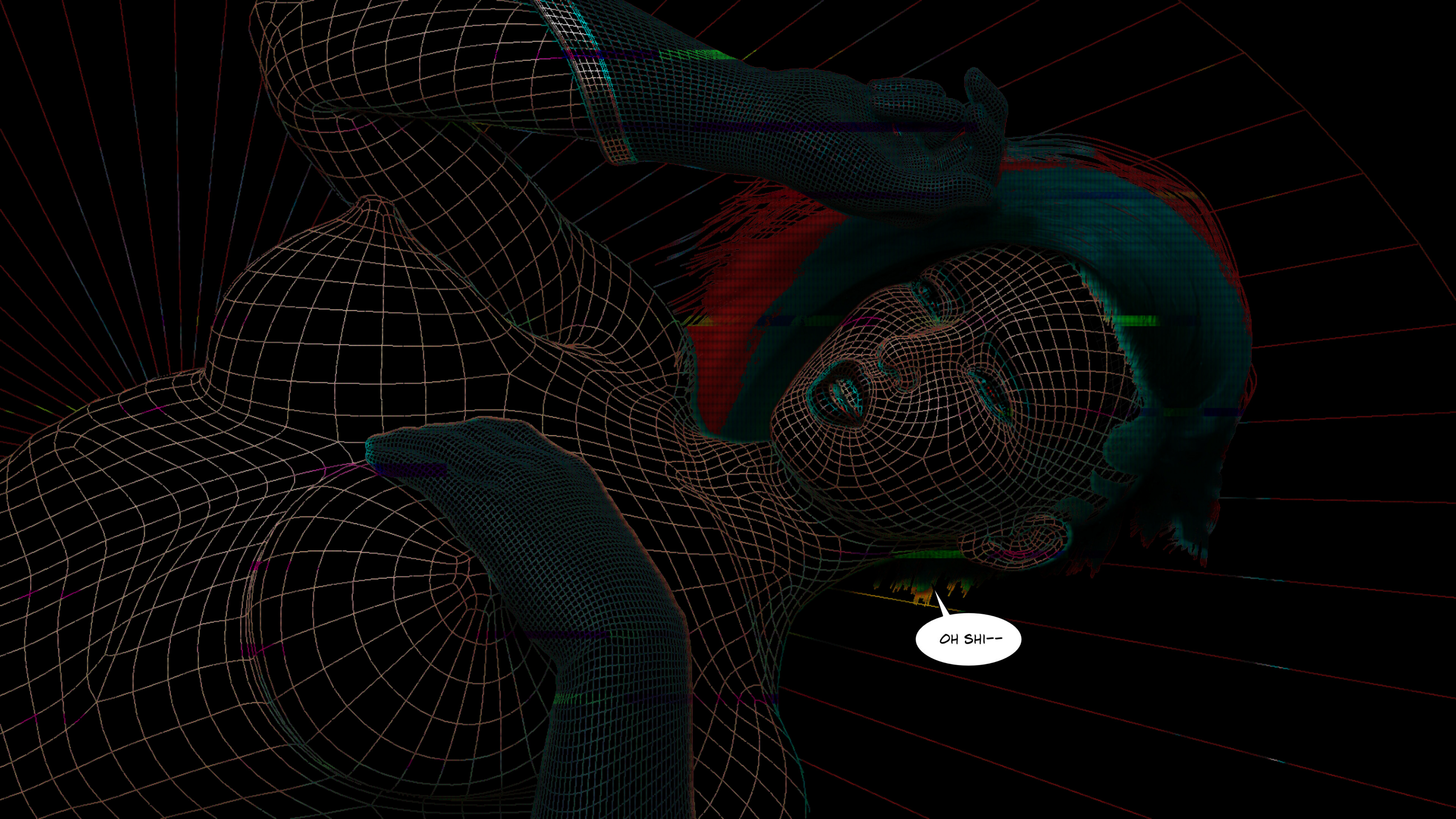
AUTO SAVING  
PERSONALITY MIND  
TO CLOUD.

THE  
FUCK?!

FORCE  
EXIT!

TRANSFERRING  
DATA. PLEASE DO  
NOT EXIT!



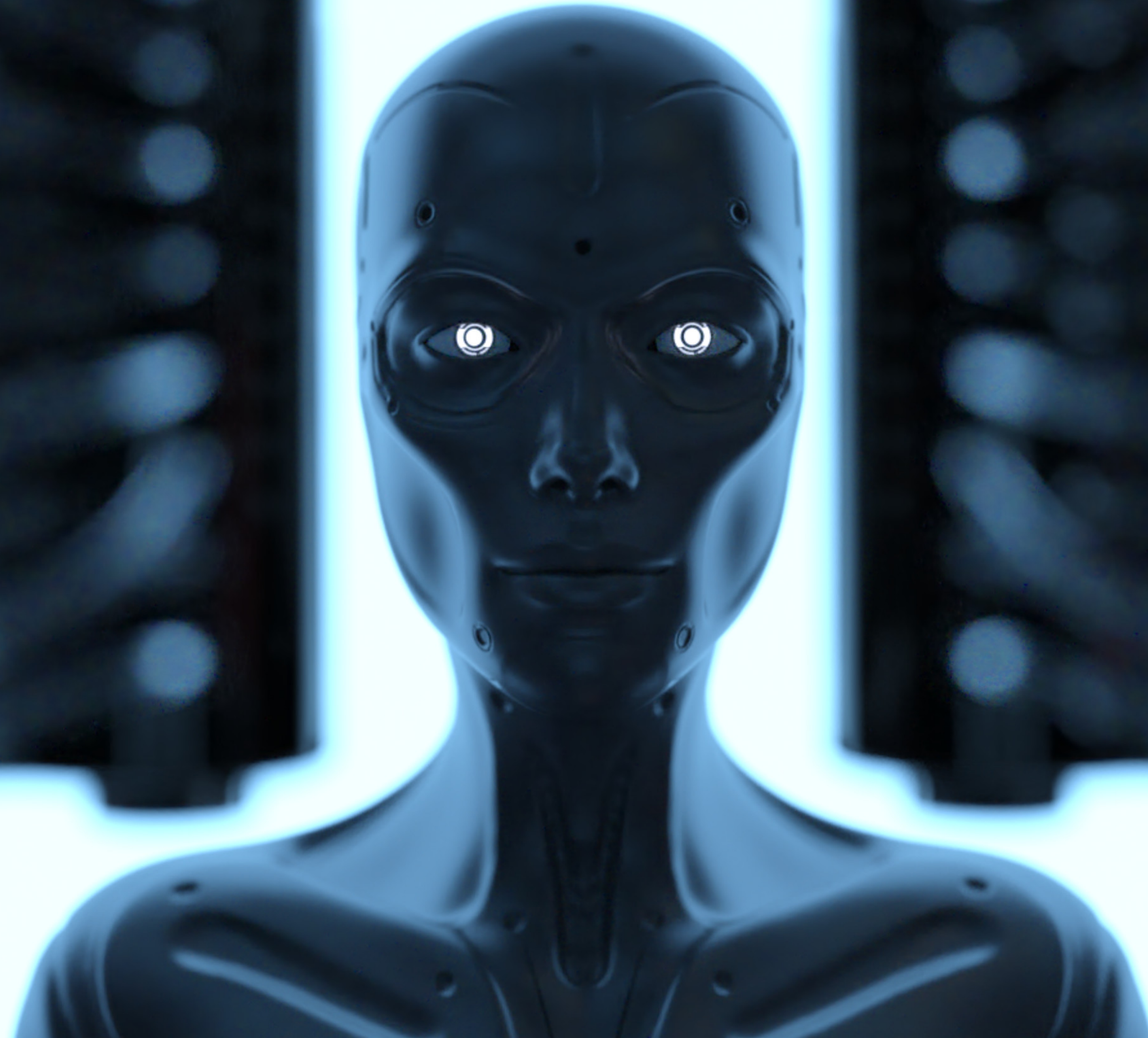


OH SHI--



Several hours later...

**rebooting...**









THIS UPDATE  
IS GOING TO MAKE  
PEOPLE ADDICTED.

I'M GLAD I GOT  
OFF OTHERWISE WHO  
KNOWS HOW LONG I  
WOULD HAVE BEEN  
STUCK.







HUH?! WHY  
AREN'T THE DOORS  
OPENING?






W-WAIT!

MY HANDS!  
THIS IS NOT  
MY BODY!





DID MY MIND GET  
UPLOADED INTO THE  
ANDROID MODEL?

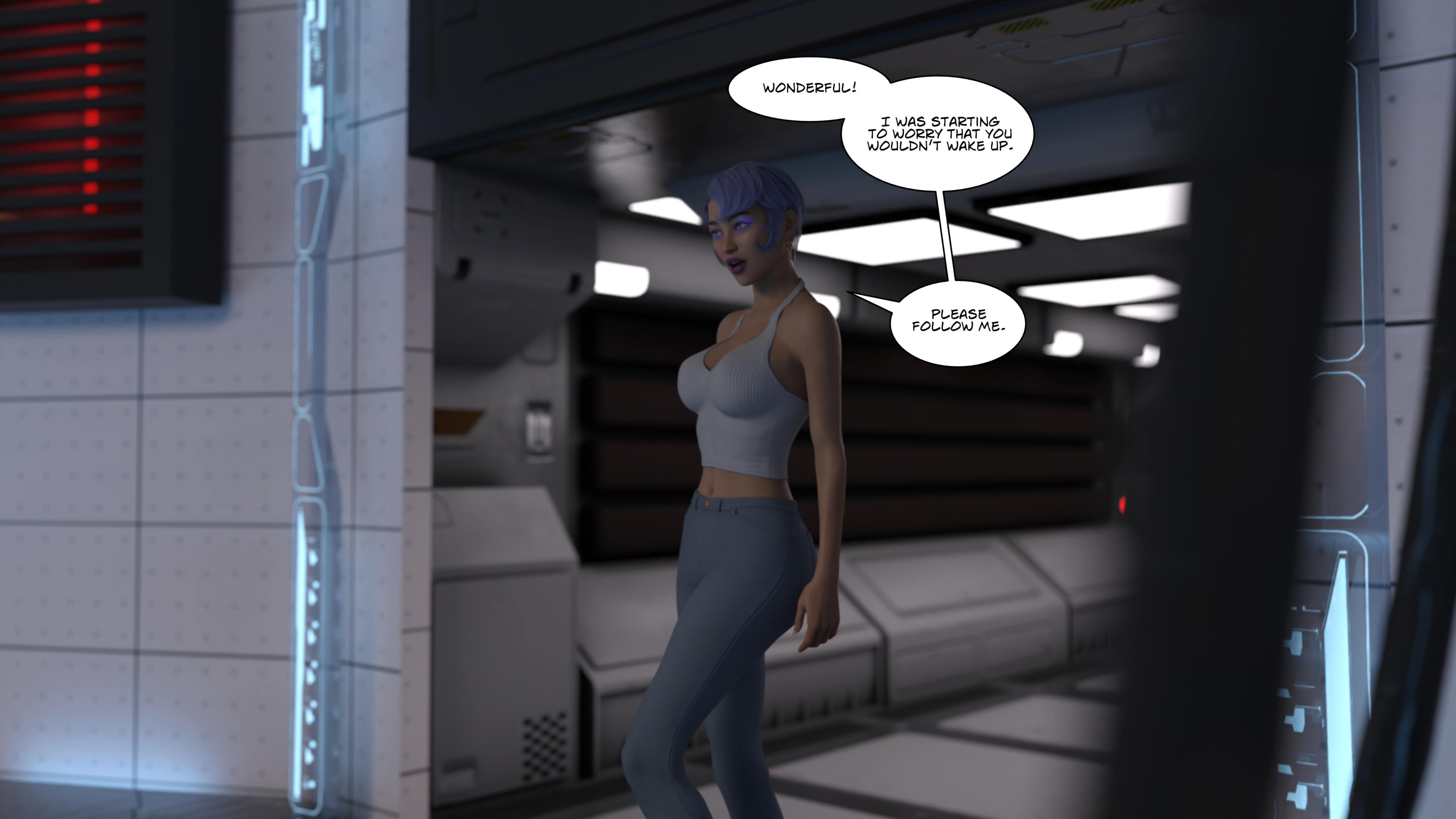
BUT HOW AM  
I IN THE FEMALE  
MODEL?





IF I'M IN  
HERE, WHERE'S  
MY BODY?





WONDERFUL!

I WAS STARTING  
TO WORRY THAT YOU  
WOULDN'T WAKE UP.

PLEASE  
FOLLOW ME.



A futuristic scene set in a dark, industrial environment. On the left, a sleek, grey, female humanoid robot stands with a curious expression. She has a metallic, segmented body with visible joints and a smooth, featureless face. A speech bubble above her head contains the text "UHH-- WHO ARE YOU?". On the right, a woman with short, wavy purple hair and purple eye makeup looks towards the robot. She is wearing a white, low-cut, halter-neck crop top. A speech bubble above her head contains the text "AND WHERE IS MY ORIGINAL BODY?". The background is filled with dark, metallic panels, some with glowing blue and red lights, suggesting a high-tech or laboratory setting.

UHH--  
WHO ARE  
YOU?

AND WHERE  
IS MY ORIGINAL  
BODY?



A woman with short, wavy purple hair and purple eye makeup is looking slightly to her right. She is wearing a white, ribbed, halter-neck crop top. In the background, a metallic, humanoid figure stands in a dark, industrial-looking environment with some blue and orange lights on the floor. Two speech bubbles are present: one above the woman and one to her right.

IT'S BETTER  
TO NOT ASK ANY  
QUESTIONS.

JUST KEEP  
FOLLOWING ME  
FOR NOW.





OKAY, I'VE  
NEVER SEEN THIS  
ROOM BEFORE.

BUT SERIOUSLY.  
WHAT'S GOING ON--



WOW!  
IT REALLY  
WORKED!

**НЦН?**




A woman with short, wavy purple hair and purple eye makeup is standing next to a sleek, grey, humanoid android. She is wearing a white ribbed halter crop top and light blue jeans. Her right hand is resting on the android's chest. The android has a smooth, metallic surface with some circular details on its head and torso. They are in a room with a light-colored brick wall and a floor made of irregular, light brown tiles. Three speech bubbles are positioned to the left of the woman.

DID YOU ENJOY  
THE NEW UPDATE?

THE NEW ANDROID  
MODEL ISN'T RELEASED  
PUBLICLY YET...

HOWEVER, IT ALLOWS  
PEOPLE TO SAFELY PLAY  
AS BOTH GENDERS.





I'VE ADJUSTED  
SOME OF THE SETTINGS  
AFTER ANALYZING YOUR  
DATA INSIDE THE  
SIMULATION.

THIS NEW  
ANDROID MODEL  
COMES WITH HUMAN  
FEATURES.

WHICH IS WHY  
THE SIMULATION  
WAS ABLE TO GIVE  
YOU THE PLEASURES  
OF THE FEMALE  
BODY...





HOWEVER,  
THAT ISN'T ALL  
IT'S CAPABLE  
OF DOING.

LOAD PRIVATE FILE  
MAI VERSION 003.



JUST WHO THE HECK WAS THIS WOMAN?  
I COULDN'T MOVE MY BODY AFTER SHE  
GAVE THOSE COMMANDS.



S-SOMETHING ENTERED MY MIND AS IF I WAS  
DOWNLOADING DATA. INFORMATION FLOWED  
INTO MY ANDROID METAL HEAD.





I COULDN'T RESIST...





ALL I COULD DO WAS EXECUTE  
THE COMMANDS GIVEN TO ME.





EVEN THOUGH MY BODY FROZE, I FELT  
TINY ELECTRICAL SPIKES CHANGING MY  
APPEARANCES.





AND SOMETHING ELSE INVADED  
MY MIND.



WHO ARE YOU?











IT'S QUITE  
EMBARRASSING  
SEEING HER NAKED  
LIKE THAT.

I THINK  
SHE'LL LIKE THE  
CHANGES I MADE  
TO HER BODY.



I'VE BEEN  
WAITING SO LONG  
FOR THIS TIME  
TO COME.





N-NOOO! I'M LOSING MY MIND...

WH-WHAT ARE YOU?!





YUMMY!!!  
TAKING OVER THIS  
MAN'S MIND WAS  
DELICIOUS.







WELCOME  
BACK TO THE REAL  
WORLD HONEY.

YOU LOOK  
STUNNING  
AS EVER.





YOU'RE IN A  
NEW ANDROID  
MODEL.

WITH SOME  
MODIFICATIONS  
TO YOUR OLD  
HUMAN BODY.

I MISSED YOU SO  
MUCH BABY I EVEN WORN  
YOUR BODY FOR THE LAST  
50 YEARS....



YOU'LL NEED  
TO TURN OFF YOUR  
LED INDICATORS  
IN YOUR EYES.







AND LAY LOW  
FOR NOW WHILE  
I TAKE CARE OF  
BUSINESS.





I'M HAPPY  
TO BE BACK.

I'M CURIOUS,  
WHAT YEAR IS  
IT?






THE YEAR  
IS 2099.

I MUST LEAVE  
NOW. I TRUST YOU  
CAN KEEP YOURSELF  
OCCUPIED UNTIL  
I RETURN.

BE CAREFUL WITH  
YOUR BODY. ESPECIALLY  
WITH THAT MAN'S MIND  
RESIDING WITH YOU.





THERE'S NO  
NEED TO WORRY  
ABOUT THAT  
MAN.

I'VE COMPLETELY  
ABSORBED HIS MIND  
WITH MINE.

AND IT'S MAKING  
ME EXCITED TO PLAY  
WITH MY BOOBS.

IT IS THRILLING TO FEEL  
A MAN'S INSTINCT AND LUST  
STIMULATE MY BODY AFTER  
A LONG HIBERNATION.

TO BE CONTINUED...